

KANSAS CORPORATION COMMISSION
OIL & GAS CONSERVATION DIVISION

Form must be Typed
Form must be signed

TEMPORARY ABANDONMENT WELL APPLICATION

All blanks must be complete

OPERATOR: License#
Name:
Address 1:
Address 2:
City: State: Zip:
Contact Person:
Phone:
Contact Person Email:
Field Contact Person:
Field Contact Person Phone:

API No. 15-
Spot Description:
Sec. Twp. S. R.
feet from N / S Line of Section
feet from E / W Line of Section
GPS Location: Lat: , Long:
Datum: NAD27 NAD83 WGS84
County: Elevation: GL KB
Lease Name: Well #:
Well Type: Oil Gas OG WSW Other:
SWD Permit #: ENHR Permit #:
Gas Storage Permit #:
Spud Date: Date Shut-In:

Table with 7 columns: Conductor, Surface, Production, Intermediate, Liner, Tubing. Rows include Size, Setting Depth, Amount of Cement, Top of Cement, Bottom of Cement.

Casing Fluid Level from Surface: How Determined? Date:
Casing Squeeze(s): to w / sacks of cement, to w / sacks of cement. Date:
Do you have a valid Oil & Gas Lease? Yes No
Depth and Type: Junk in Hole at Tools in Hole at Casing Leaks: Yes No Depth of casing leak(s):
Type Completion: ALT. I ALT. II Depth of: DV Tool: w / sacks of cement Port Collar: w / sack of cement
Packer Type: Size: Inch Set at: Feet
Total Depth: Plug Back Depth: Plug Back Method:

Geological Data:

Table with 4 columns: Formation Name, Formation Top, Formation Base, Completion Information. Rows 1 and 2.

UNDER PENALTY OF PERJURY I HEREBY ATTEST THAT THE INFORMATION CONTAINED HEREIN IS TRUE AND CORRECT TO THE BEST OF MY KNOWLEDGE

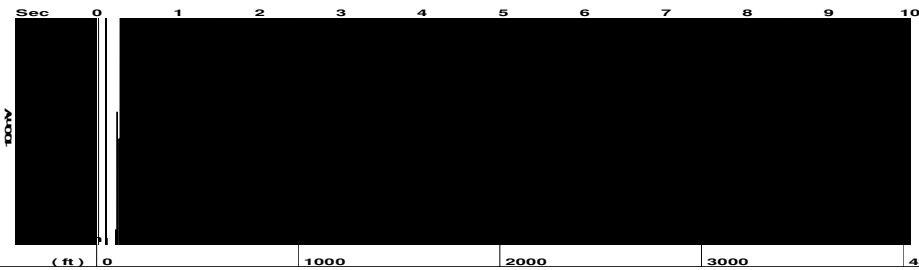
Submitted Electronically

Do NOT Write in This Space - KCC USE ONLY
Date Tested: Results: Date Plugged: Date Repaired: Date Put Back in Service:
Review Completed by: Comments:
TA Approved: Yes Denied Date:

Mail to the Appropriate KCC Conservation Office:

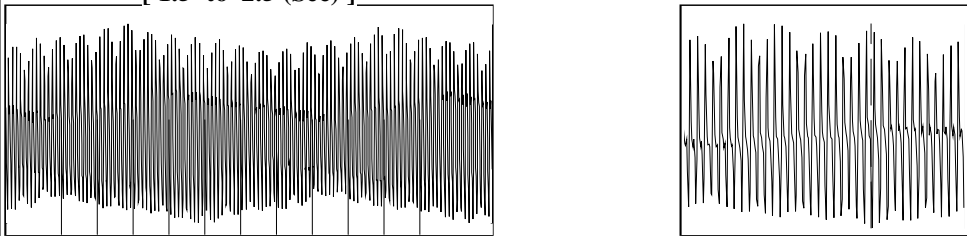
Table with 3 columns: District Office #, Address, Phone. Rows 1-4.

Group: Novy Oil & Gas Well: Rhoda Crist 1 (acquired on: 04/07/21 10:05:54)



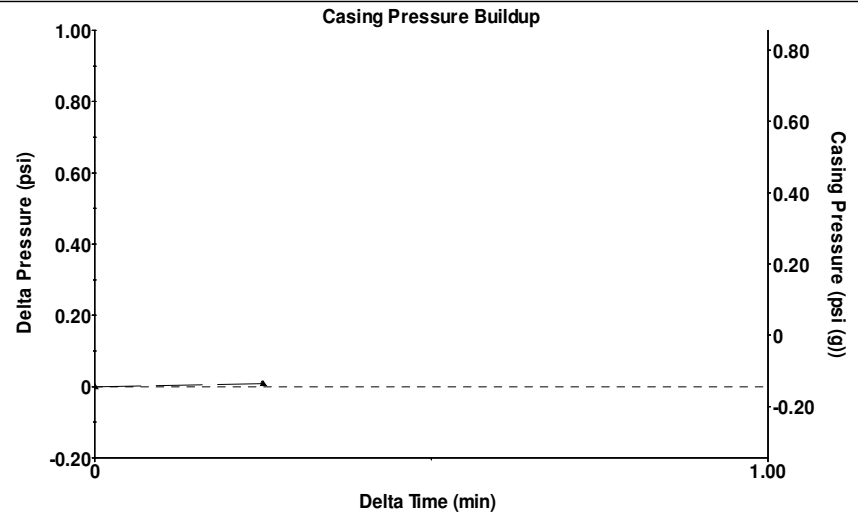
Filter Type High Pass Automatic Collar Count Yes Time 8.5 sec
 Manual Acoustic Velo 860.244 ft/s Manual JTS/sec 13.5685 Joints 108.051 Jts
 Depth 3425.21 ft

[1.5 to 2.5 (Sec)]



Analysis Method: Automatic

Group: Novy Oil & Gas Well: Rhoda Crist 1 (acquired on: 04/07/21 10:05:54)



Change in Pressure 0.01 psi PT15262
 Change in Time 0.25 min Range 0 - ? psi

Group: Novy Oil & Gas Well: Rhoda Crist 1 (acquired on: 04/07/21 10:05:54)

Production Current Potential
 Oil - * - BBL/D
 Water - * - BBL/D
 Gas - * - Mscf/D

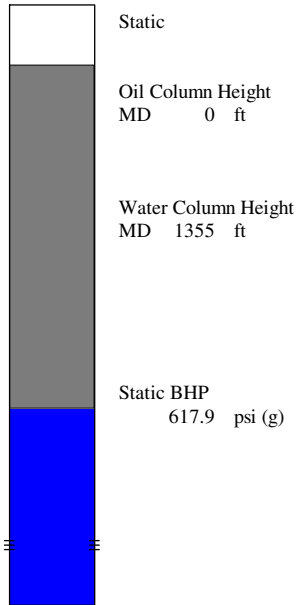
IPR Method Vogel
 PBHP/SBHP - * -
 Production Efficiency 0.0

Oil 40 deg.API
 Water 1.05 Sp.Gr.H2O
 Gas 1.16 Sp.Gr.AIR

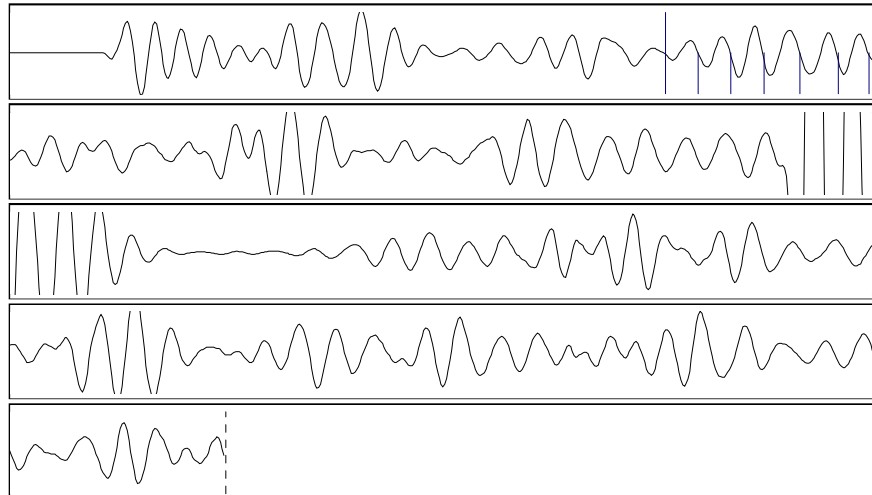
Acoustic Velocity 805.932 ft/s

Casing Pressure -0.1 psi (g)
 Casing Pressure Buildup 0.008 psi
 Gas/Liquid Interface Pressure 2.0 psi (g)

Liquid Level Depth 3425.21 ft
 Pump Intake Depth - * - ft
 Formation Depth 4780.00 ft



Group: Novy Oil & Gas Well: Rhoda Crist 1 (acquired on: 04/07/21 10:05:54)



Acoustic Velocity 805.932 ft/s Joints counted 6
 Joints Per Second 12.7119 jts/sec Joints to liquid level 108.051
 Depth to liquid level 3425.21 ft Filter Width 11.5685 15.5685
 Automatic Collar Count Yes Time to 1st Collar 1.52 1.992

April 13, 2021

Kirk Glenn
Novy Oil & Gas, Inc.
PO BOX 559
GODDARD, KS 67052-0559

Re: Temporary Abandonment
API 15-171-20079-00-00
RHODA CRIST 1
NE/4 Sec.13-20S-34W
Scott County, Kansas

Dear Kirk Glenn:

"Your temporary abandonment (TA) application for the well listed above has been approved. In accordance with K.A.R. 82-3-111 the TA status of this well will expire 04/13/2022.

- * If you return this well to service or plug it, please notify the District Office.
- * If you sell this well you are required to file a Transfer of Operator form, T-1.
- * If the well will remain temporarily abandoned, you must submit a new TA application, CP-111, before 04/13/2022.

You may contact me at the number above if you have questions.

Very truly yours,

Michael Maier"