

KANSAS CORPORATION COMMISSION
OIL & GAS CONSERVATION DIVISION

Form must be Typed
Form must be signed

TEMPORARY ABANDONMENT WELL APPLICATION

All blanks must be complete

OPERATOR: License#
Name:
Address 1:
Address 2:
City: State: Zip:
Contact Person:
Phone:
Contact Person Email:
Field Contact Person:
Field Contact Person Phone:

API No. 15-
Spot Description:
Sec. Twp. S. R.
GPS Location: Lat: Long:
Datum: NAD27 NAD83 WGS84
County: Elevation:
Lease Name: Well #:
Well Type: Oil Gas OG WSW Other:
SWD Permit #: ENHR Permit #:
Gas Storage Permit #:
Spud Date: Date Shut-In:

Table with 7 columns: Conductor, Surface, Production, Intermediate, Liner, Tubing. Rows include Size, Setting Depth, Amount of Cement, Top of Cement, Bottom of Cement.

Casing Fluid Level from Surface: How Determined? Date:
Casing Squeeze(s): to w / sacks of cement, to w / sacks of cement. Date:
Do you have a valid Oil & Gas Lease? Yes No
Depth and Type: Junk in Hole at Tools in Hole at Casing Leaks: Yes No Depth of casing leak(s):
Type Completion: ALT. I ALT. II Depth of: DV Tool: w / sacks of cement Port Collar: w / sack of cement
Packer Type: Size: Inch Set at: Feet
Total Depth: Plug Back Depth: Plug Back Method:

Geological Data:

Table with 4 columns: Formation Name, Formation Top, Formation Base, Completion Information. Rows 1 and 2.

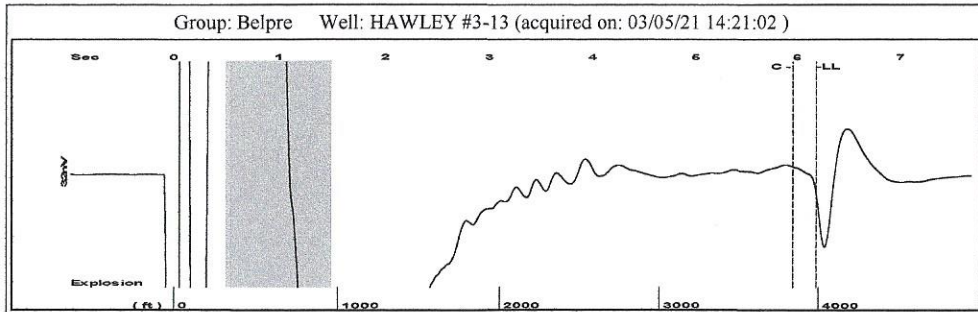
UNDER PENALTY OF PERJURY I HEREBY ATTEST THAT THE INFORMATION CONTAINED HEREIN IS TRUE AND CORRECT TO THE BEST OF MY KNOWLEDGE

Submitted Electronically

Do NOT Write in This Space - KCC USE ONLY
Date Tested: Results: Date Plugged: Date Repaired: Date Put Back in Service:
Review Completed by: Comments:
TA Approved: Yes Denied Date:

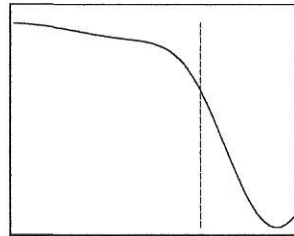
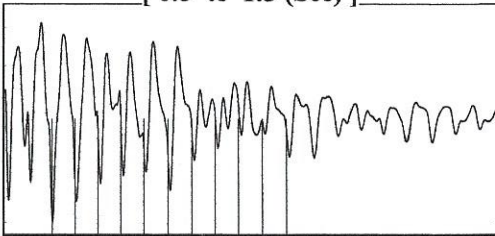
Mail to the Appropriate KCC Conservation Office:

Table with 3 columns: District Office #, Address, Phone. Rows 1-4.

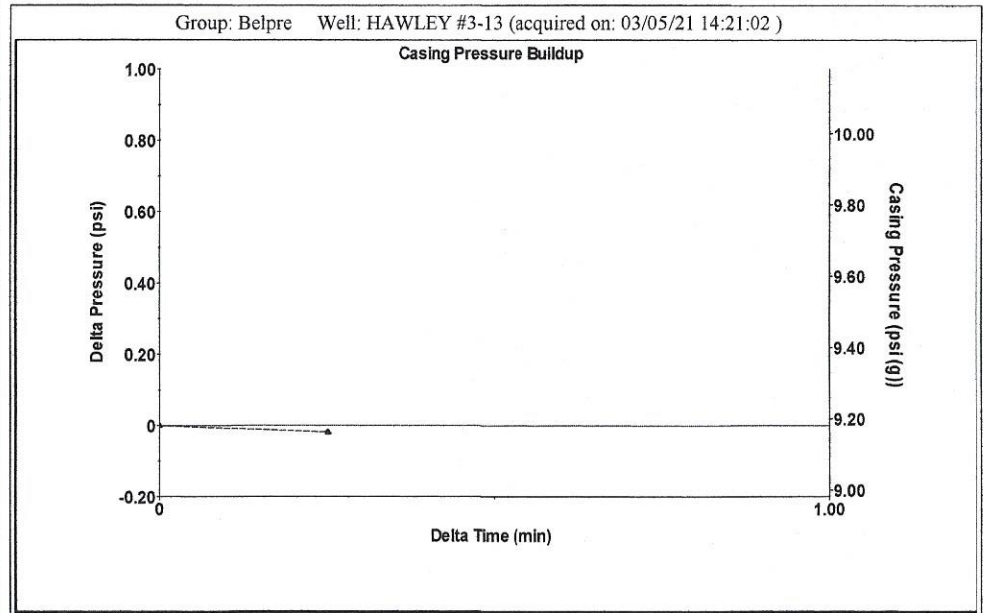


Filter Type High Pass Automatic Collar Count Yes Time 6.181 sec
 Manual Acoustic Velo 1298.11 ft/s Manual JTS/sec 21.0526 Joints 129.314 Jts
 Depth 3986.76 ft

[0.5 to 1.5 (Sec)]



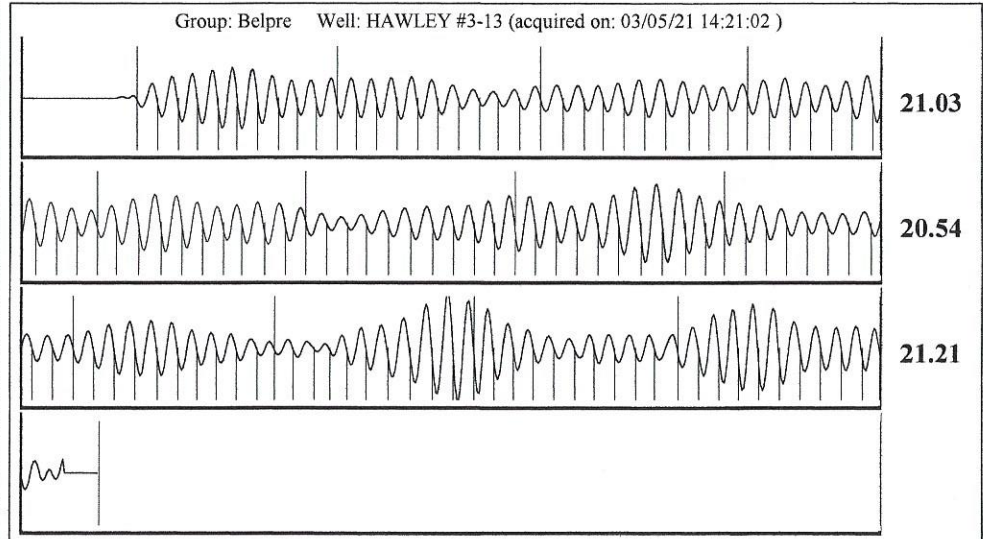
Analysis Method: Automatic



Change in Pressure -0.02 psi PT13440
 Range 0 - ? psi
 Change in Time 0.25 min

Group: Belpre Well: HAWLEY #3-13 (acquired on: 03/05/21 14:21:02)

Production				
Current	Potential	Casing Pressure	Producing	
Oil -*-	-*- BBL/D	9.2 psi (g)		
Water -*-	-*- BBL/D	Casing Pressure Buildup	Annular	
Gas -*-	-*- Mscf/D	-0.0 psi	Gas Flow	0 Mscf/D
		0.25 min	% Liquid	100 %
IPR Method	Vogel	Gas/Liquid Interface Pressure		
PBHP/SBHP	-*-	11.6 psi (g)		
Production Efficiency	0.0			
Oil 40 deg.API		Liquid Level Depth		
Water 1.05 Sp.Gr.H2O		3986.76 ft		
Gas 0.72 Sp.Gr.AIR		Pump Intake Depth		
		4317.00 ft		
Acoustic Velocity	1290 ft/s	Formation Depth		
		4301.00 ft		
Formation Submergence			Pump Intake	
Total Gaseous Liquid Column HT (TVD)	330 ft		123.1 psi (g)	
Equivalent Gas Free Liquid HT (TVD)	330 ft		Producing BHP	
			117.8 psi (g)	
Acoustic Test			Static BHP	
			-*- psi (g)	



Acoustic Velocity 1290 ft/s Joints counted 119
 Joints Per Second 20.9212 jts/sec Joints to liquid level 129.314
 Depth to liquid level 3986.76 ft Filter Width 19.0526 23.0526
 Automatic Collar Count Yes Time to 1st Collar 0.268 5.956

April 13, 2021

Margery L. Nagel
F. G. Holl Company L.L.C.
9431 E CENTRAL STE 100
WICHITA, KS 67206-2563

Re: Temporary Abandonment
API 15-047-20722-00-00
HAWLEY 3-13
NW/4 Sec.13-24S-17W
Edwards County, Kansas

Dear Margery L. Nagel:

Your application for Temporary Abandonment (TA) for the above-listed well is denied for the following reasons(s):

Shut-in Over 10 years

Pursuant to K.A.R. 82-3-111, the well must be plugged or returned to service by 05/13/2021.

If you wish to instead file an application for an exception to the 10-year limitation of K.A.R. 82-3-111, demonstrating why it is necessary to TA the well for more than 10 years, then you must file the application for an exception by 05/13/2021.

This deadline does NOT override any compliance deadline given to you in any Commission Order.

You may contact me if you have any questions.

Sincerely,
Michael Maier
KCC DISTRICT 1