

KANSAS CORPORATION COMMISSION
OIL & GAS CONSERVATION DIVISION

TEMPORARY ABANDONMENT WELL APPLICATION

OPERATOR: License#
Name:
Address 1:
Address 2:
City: State: Zip:
Contact Person:
Phone:
Contact Person Email:
Field Contact Person:
Field Contact Person Phone:

API No. 15-
Spot Description:
Sec. Twp. S. R.
feet from N / S Line of Section
feet from E / W Line of Section
GPS Location: Lat: , Long:
Datum: NAD27 NAD83 WGS84
County: Elevation: GL KB
Lease Name: Well #:
Well Type: Oil Gas OG WSW Other:
SWD Permit #: ENHR Permit #:
Gas Storage Permit #:
Spud Date: Date Shut-In:

Table with 7 columns: Conductor, Surface, Production, Intermediate, Liner, Tubing. Rows include Size, Setting Depth, Amount of Cement, Top of Cement, Bottom of Cement.

Casing Fluid Level from Surface: How Determined? Date:
Casing Squeeze(s): to w / sacks of cement, to w / sacks of cement. Date:
Do you have a valid Oil & Gas Lease? Yes No
Depth and Type: Junk in Hole at Tools in Hole at Casing Leaks: Yes No Depth of casing leak(s):
Type Completion: ALT. I ALT. II Depth of: DV Tool: w / sacks of cement Port Collar: w / sack of cement
Packer Type: Size: Inch Set at: Feet
Total Depth: Plug Back Depth: Plug Back Method:

Geological Date:

Table with 4 columns: Formation Name, Formation Top, Formation Base, Completion Information. Rows 1 and 2.

UNDER PENALTY OF PERJURY I HEREBY ATTEST THAT THE INFORMATION CONTAINED HEREIN IS TRUE AND CORRECT TO THE BEST OF MY KNOWLEDGE

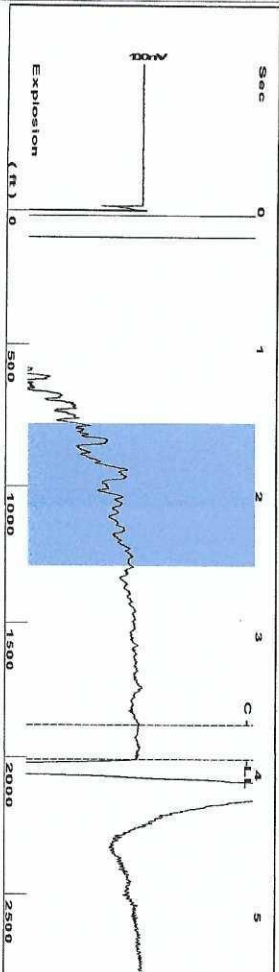
Submitted Electronically

Do NOT Write in This Space - KCC USE ONLY
Date Tested: Results: Date Plugged: Date Repaired: Date Put Back in Service:
Review Completed by: Comments:
TA Approved: Yes Denied Date:

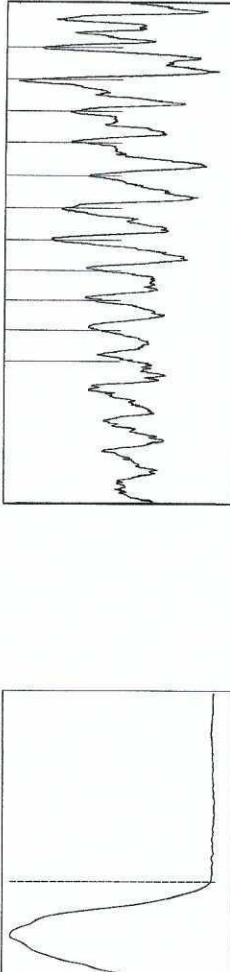
Mail to the Appropriate KCC Conservation Office:

Table with 2 columns: Office Address, Phone. Rows for KCC District Office #1, #2, #3, #4.

Group: Investment Equipment Well: MORRIS #2 (acquired on: 04/14/21 12:22:16)



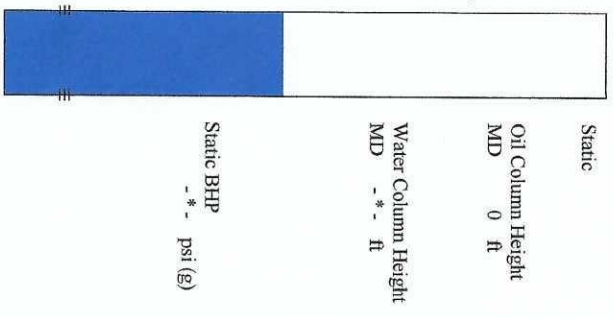
Filter Type High Pass Automatic Collar Count Yes Time 3.896 sec
 Manual Acoustic Vel 1.00635 ft/s Manual JTS/sec 15.873 Joints 63.3215 Jts
 Depth 2007.29 ft



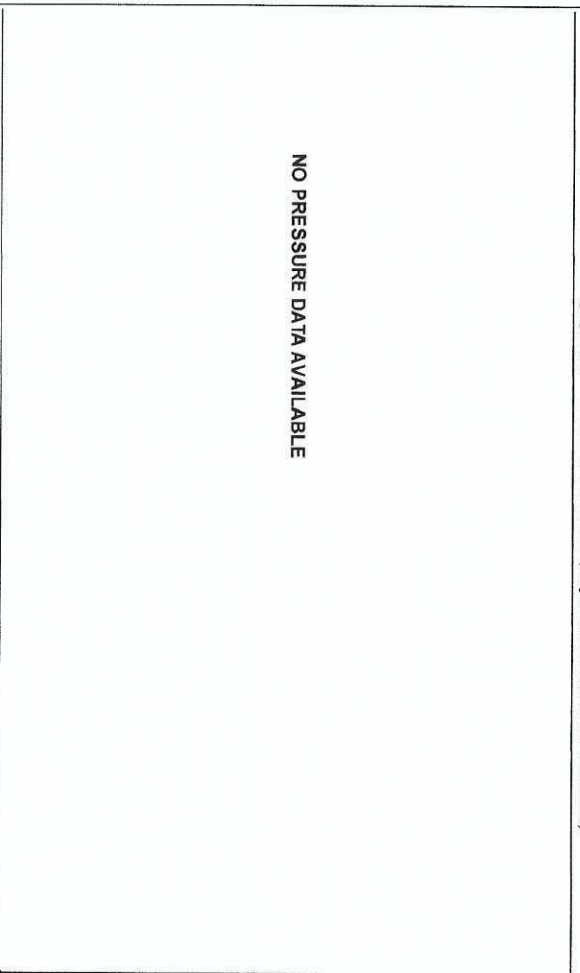
Analysis Method: Automatic

Group: Investment Equipment Well: MORRIS #2 (acquired on: 04/14/21 12:22:16)

Production Current	Potential	Casing Pressure	Static
Oil -*- BBL/D	-*- BBL/D	-2.4 psi (g)	Oil Column Height
Water -*- BBL/D	-*- BBL/D	-0.018 psi	MID 0 ft
Gas -*- Mscf/D	-*- Mscf/D	2.75 min	Water Column Height
IPR Method	Vogel	Gas/Liquid Interface Pressure	MID -*- ft
PBHP/SBHP	-*-	-*- psi (g)	Static BHP
Production Efficiency	0.0		-*- psi (g)
Oil 40 deg API		Liquid Level Depth	
Water 1.05 Sp.Gr.H2O		2007.29 ft	
Gas 0.95 Sp.Gr.AIR		Pump Intake Depth	
		-*- ft	
Acoustic Velocity	1030.44 ft/s	Formation Depth	
		3672.00 ft	

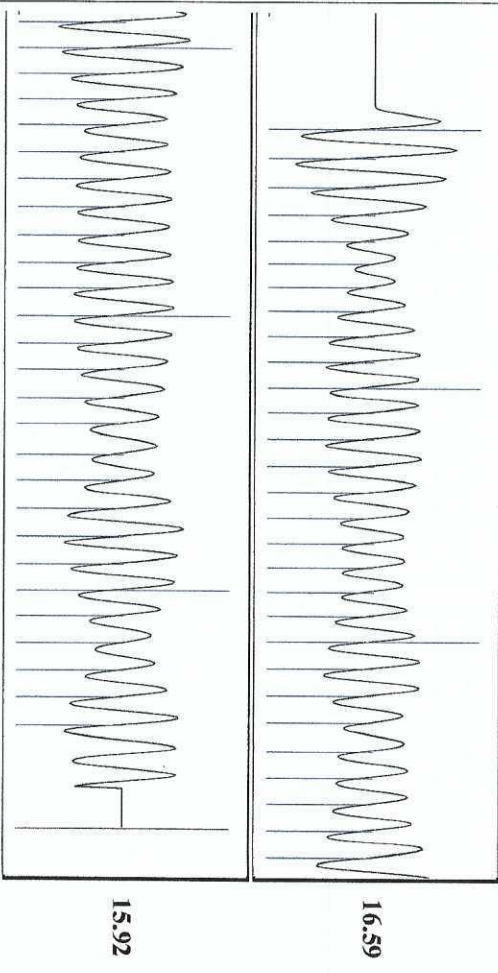


Group: Investment Equipment Well: MORRIS #2 (acquired on: 04/14/21 12:22:16)

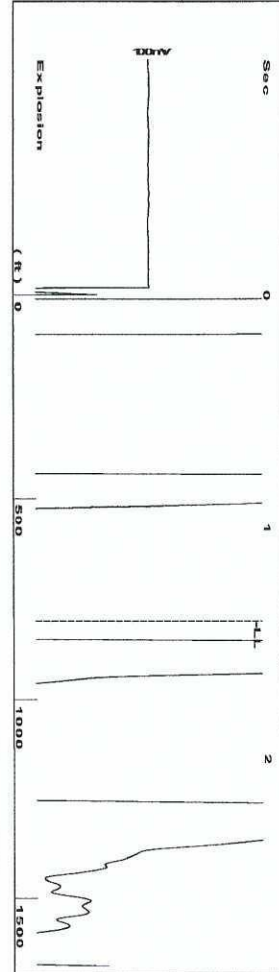


Change in Pressure 0.00 psi PT6454 Range
 Change in Time 0.00 min 0 - ? psi

Group: Investment Equipment Well: MORRIS #2 (acquired on: 04/14/21 12:22:16)



Acoustic Velocity 1030.44 ft/s Joints counted 55
 Joints Per Second 16.253 Jts/sec Joints to liquid level 63.3215
 Depth to liquid level 2007.29 ft Filter Width 13.873
 Automatic Collar Count Yes Time to 1st Collar 0.272 3.656



Time 1.396 sec
 Joints 25.3218 Jts
 Depth 802.70 ft

Liquid level calculated with
 user supplied Acoustic Velocity

Acoustic Velocity 1150 f/s

Analysis Method: Acoustic Velocity

Group: Investment Equipment Well: Morris WSW (acquired on: 04/14/21 12:30:54)

Production Current	Potential	Casing Pressure	Static
Oil - *-	- *- BBL/D	0.3 psi (g)	Oil Column Height MD 0 ft
Water - *-	- *- BBL/D	Casing Pressure Buildup 0.000 psi	Water Column Height MD - *- ft
Gas - *-	- *- Mscf/D	1.25 min	Static BHP - *- psi (g)
IPR Method	Vogel	Gas/Liquid Interface Pressure - *- psi (g)	
PBHP/SBHP	- *-		
Production Efficiency	0.0		
Oil 40 deg API		Liquid Level Depth 802.70 ft	
Water 1.05 Sp.Gr:H2O		Pump Intake Depth - *- ft	
Gas 0.85 Sp.Gr:AIR		Formation Depth 1770.00 ft	
Acoustic Velocity	1150 f/s		

ACQUIRING PRESSURE DATA...

Change in Pressure	0.00 psi	PT6454
Change in Time	0.00 min	Range
		0 - ? psi

Group: Investment Equipment Well: Morris WSW (acquired on: 04/14/21 12:30:54)

Entered Acoustic Velocity for Liquid Level depth determination

Conservation Division
District Office No. 4
2301 E. 13th Street
Hays, KS 67601-2651



Phone: 785-261-6250
Fax: 785-625-0564
<http://kcc.ks.gov/>

Andrew J. French, Chairperson
Dwight D. Keen, Commissioner
Susan K. Duffy, Commissioner

Laura Kelly, Governor

April 14, 2021

James Chisholm
Investment Equipment LLC
412 W. PLATTE AVE.
FT MORGAN, CO 80701-2650

Re: Temporary Abandonment
API 15-065-22921-00-00
MORRIS 2
SW/4 Sec.27-07S-23W
Graham County, Kansas

Dear James Chisholm:

"Your temporary abandonment (TA) application for the well listed above has been approved. In accordance with K.A.R. 82-3-111 the TA status of this well will expire 04/14/2022.

- * If you return this well to service or plug it, please notify the District Office.
- * If you sell this well you are required to file a Transfer of Operator form, T-1.
- * If the well will remain temporarily abandoned, you must submit a new TA application, CP-111, before 04/14/2022.

You may contact me at the number above if you have questions.

Very truly yours,

RICHARD WILLIAMS"