

KANSAS CORPORATION COMMISSION
OIL & GAS CONSERVATION DIVISION

TEMPORARY ABANDONMENT WELL APPLICATION

OPERATOR: License#
Name:
Address 1:
Address 2:
City: State: Zip:
Contact Person:
Phone:
Contact Person Email:
Field Contact Person:
Field Contact Person Phone:

API No. 15-
Spot Description:
Sec. Twp. S. R.
GPS Location: Lat: Long:
Datum: NAD27 NAD83 WGS84
County: Elevation:
Lease Name: Well #:
Well Type: Oil Gas OG WSW Other:
SWD Permit #: ENHR Permit #:
Gas Storage Permit #:
Spud Date: Date Shut-In:

Table with 7 columns: Conductor, Surface, Production, Intermediate, Liner, Tubing. Rows include Size, Setting Depth, Amount of Cement, Top of Cement, Bottom of Cement.

Casing Fluid Level from Surface: How Determined? Date:
Casing Squeeze(s): to w / sacks of cement, to w / sacks of cement. Date:
Do you have a valid Oil & Gas Lease? Yes No
Depth and Type: Junk in Hole at Tools in Hole at Casing Leaks: Yes No Depth of casing leak(s):
Type Completion: ALT. I ALT. II Depth of: DV Tool: w / sacks of cement Port Collar: w / sack of cement
Packer Type: Size: Inch Set at: Feet
Total Depth: Plug Back Depth: Plug Back Method:

Geological Data:

Table with 4 columns: Formation Name, Formation Top, Formation Base, Completion Information. Rows 1 and 2.

UNDER PENALTY OF PERJURY I HEREBY ATTEST THAT THE INFORMATION CONTAINED HEREIN IS TRUE AND CORRECT TO THE BEST OF MY KNOWLEDGE

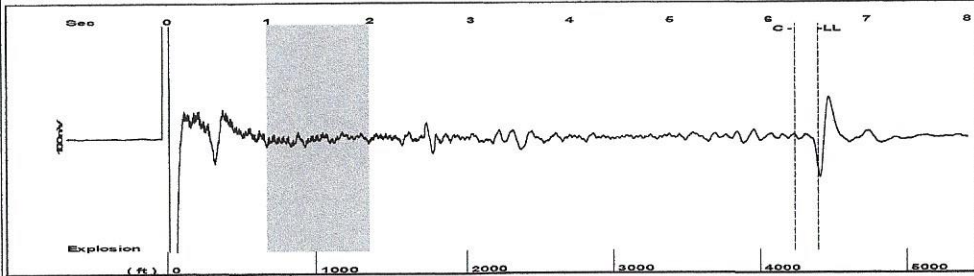
Submitted Electronically

Do NOT Write in This Space - KCC USE ONLY
Date Tested: Results: Date Plugged: Date Repaired: Date Put Back in Service:
Review Completed by: Comments:
TA Approved: Yes Denied Date:

Mail to the Appropriate KCC Conservation Office:

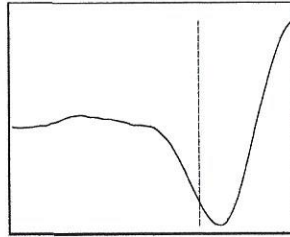
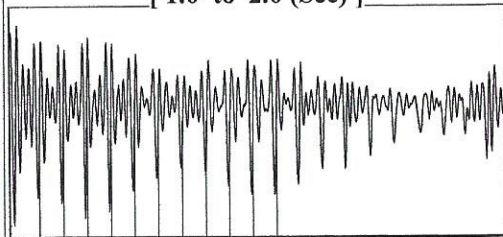
Table with 2 columns: Office Address, Phone. Rows for District Office #1, #2, #3, #4.

Group: Belpre Well: Russell Trust 1-3 (acquired on: 03/05/21 11:00:55)



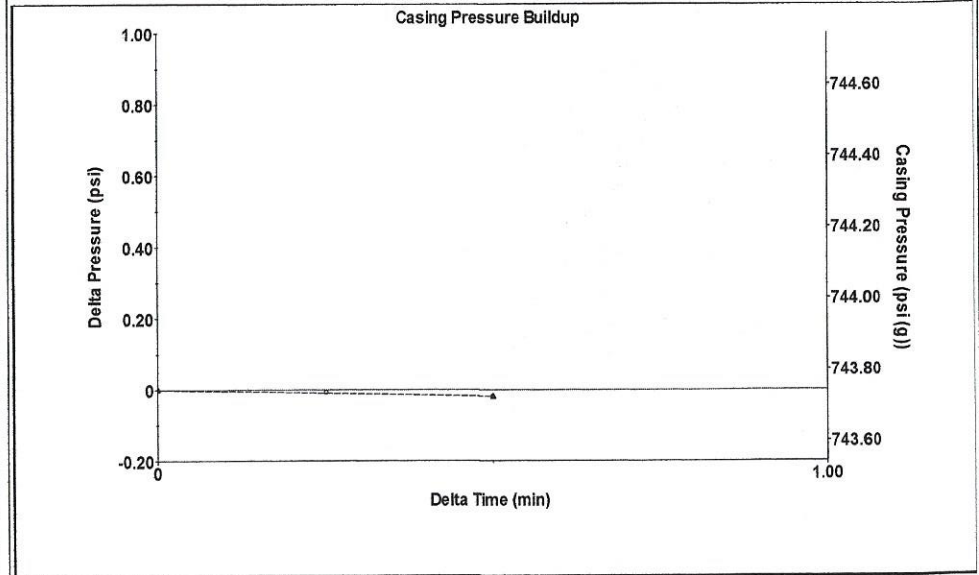
Filter Type High Pass Automatic Collar Count Yes Time 6.5 sec  
 Manual Acoustic Velo 1333.93 ft/s Manual JTS/sec 20.8333 Joints 137.308 Jts  
 Depth 4395.82 ft

[ 1.0 to 2.0 (Sec) ]



Analysis Method: Automatic

Group: Belpre Well: Russell Trust 1-3 (acquired on: 03/05/21 11:00:55)



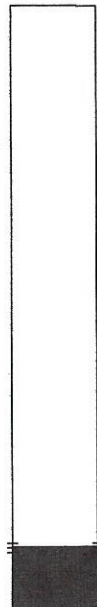
Change in Pressure -0.02 psi PT13440  
 Range 0 - ? psi  
 Change in Time 0.50 min

Group: Belpre Well: Russell Trust 1-3 (acquired on: 03/05/21 11:00:55)

Production		Casing Pressure	Producing
Current	Potential	743.7 psi (g)	
Oil - * -	- * - BBL/D	Casing Pressure Buildup	
Water - * -	- * - BBL/D	-0.0 psi	
Gas - * -	- * - Mscf/D	0.50 min	Annular Gas Flow
IPR Method	Vogel	Gas/Liquid Interface Pressure	0 Mscf/D
PBHP/SBHP	- * -	822.8 psi (g)	% Liquid
Production Efficiency	0.0	Liquid Level Depth	100 %
Oil 40 deg.API		4395.82 ft	
Water 1.05 Sp.Gr.H2O		Tubing Intake Depth	
Gas 0.62 Sp.Gr.AIR		- * - ft	
Acoustic Velocity	1352.56 ft/s	Formation Depth	
		4414.00 ft	

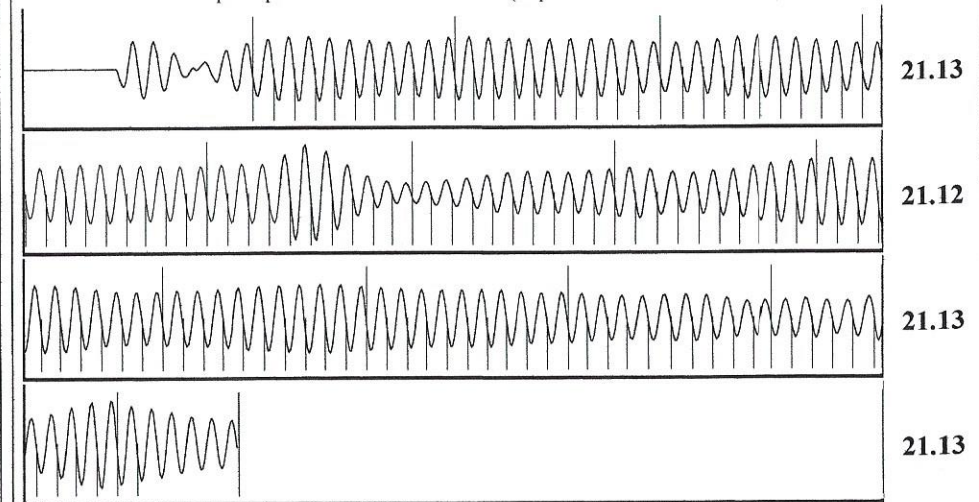
Formation Submergence  
 Total Gaseous Liquid Column HT (TVD) 18 ft  
 Equivalent Gas Free Liquid HT (TVD) 18 ft

Acoustic Test



Tubing Intake - \* - psi (g)  
 Producing BHP 831.0 psi (g)  
 Static BHP - \* - psi (g)

Group: Belpre Well: Russell Trust 1-3 (acquired on: 03/05/21 11:00:55)



Acoustic Velocity	1352.56 ft/s	Joints counted	121
Joints Per Second	21.1243 jts/sec	Joints to liquid level	137.308
Depth to liquid level	4395.82 ft	Filter Width	18.8333 22.8333
Automatic Collar Count	Yes	Time to 1st Collar	0.536 6.264

Conservation Division  
District Office No. 1  
210 E. Frontview, Suite A  
Dodge City, KS 67801



Phone: 620-682-7933  
<http://kcc.ks.gov/>

Andrew J. French, Chairperson  
Dwight D. Keen, Commissioner  
Susan K. Duffy, Commissioner

Laura Kelly, Governor

April 20, 2021

Loveness Mpanje  
F. G. Holl Company L.L.C.  
9431 E CENTRAL STE 100  
WICHITA, KS 67206-2563

Re: Temporary Abandonment  
API 15-047-21547-00-01  
RUSSELL TRUST 1-3  
W/2 Sec.03-25S-17W  
Edwards County, Kansas

Dear Loveness Mpanje:

"Your temporary abandonment (TA) application for the well listed above has been approved. In accordance with K.A.R. 82-3-111 the TA status of this well will expire 04/20/2022.

- \* If you return this well to service or plug it, please notify the District Office.
- \* If you sell this well you are required to file a Transfer of Operator form, T-1.
- \* If the well will remain temporarily abandoned, you must submit a new TA application, CP-111, before 04/20/2022.

You may contact me at the number above if you have questions.

Very truly yours,

Michael Maier"