

KANSAS CORPORATION COMMISSION
OIL & GAS CONSERVATION DIVISION

TEMPORARY ABANDONMENT WELL APPLICATION

OPERATOR: License# _____
 Name: _____
 Address 1: _____
 Address 2: _____
 City: _____ State: _____ Zip: _____ + _____
 Contact Person: _____
 Phone: (_____) _____
 Contact Person Email: _____
 Field Contact Person: _____
 Field Contact Person Phone: (_____) _____

API No. 15- _____
 Spot Description: _____
 _____ - _____ - _____ - _____ Sec. _____ Twp. _____ S. R. _____ E W
 _____ feet from N / S Line of Section
 _____ feet from E / W Line of Section
 GPS Location: Lat: _____, Long: _____
(e.g. xx.xxxxx) (e.g. -xxx.xxxxx)
 Datum: NAD27 NAD83 WGS84
 County: _____ Elevation: _____ GL KB
 Lease Name: _____ Well #: _____
 Well Type: (check one) Oil Gas OG WSW Other: _____
 SWD Permit #: _____ ENHR Permit #: _____
 Gas Storage Permit #: _____
 Spud Date: _____ Date Shut-In: _____

	Conductor	Surface	Production	Intermediate	Liner	Tubing
Size						
Setting Depth						
Amount of Cement						
Top of Cement						
Bottom of Cement						

Casing Fluid Level from Surface: _____ How Determined? _____ Date: _____
 Casing Squeeze(s): _____ to _____ w / _____ sacks of cement, _____ to _____ w / _____ sacks of cement. Date: _____
(top) (bottom) (top) (bottom)
 Do you have a valid Oil & Gas Lease? Yes No
 Depth and Type: Junk in Hole at _____ Tools in Hole at _____ Casing Leaks: Yes No Depth of casing leak(s): _____
(depth) (depth)
 Type Completion: ALT. I ALT. II Depth of: DV Tool: _____ w / _____ sacks of cement Port Collar: _____ w / _____ sack of cement
(depth) (depth)
 Packer Type: _____ Size: _____ Inch Set at: _____ Feet
 Total Depth: _____ Plug Back Depth: _____ Plug Back Method: _____

Geological Data:

Formation Name	Formation Top	Formation Base	Completion Information
1. _____	At: _____	to _____ Feet	Perforation Interval _____ to _____ Feet or Open Hole Interval _____ to _____ Feet
2. _____	At: _____	to _____ Feet	Perforation Interval _____ to _____ Feet or Open Hole Interval _____ to _____ Feet

UNDER PENALTY OF PERJURY I HEREBY ATTEST THAT THE INFORMATION CONTAINED HEREIN IS TRUE AND CORRECT TO THE BEST OF MY KNOWLEDGE

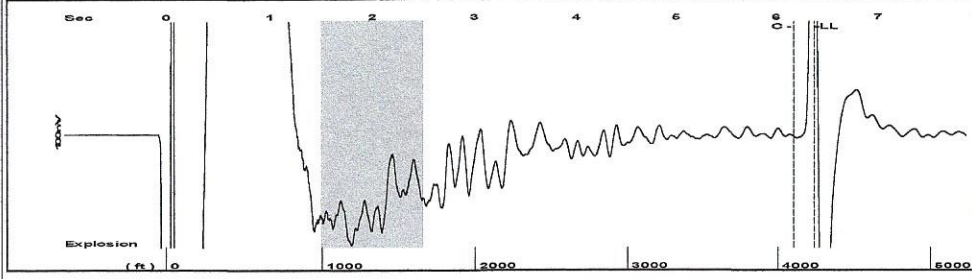
Submitted Electronically

Do NOT Write in This Space - KCC USE ONLY	Date Tested: _____	Results: _____	Date Plugged: _____	Date Repaired: _____	Date Put Back in Service: _____
	Review Completed by: _____ Comments: _____				
TA Approved: <input type="checkbox"/> Yes <input type="checkbox"/> Denied Date: _____					

Mail to the Appropriate KCC Conservation Office:

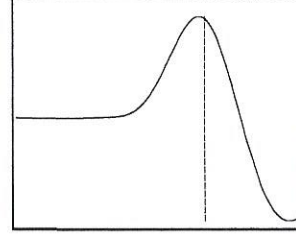
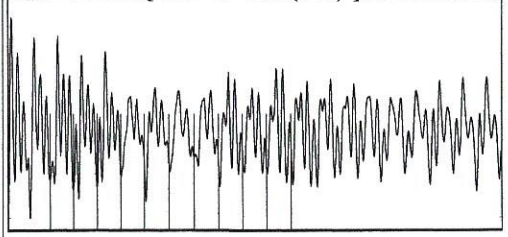
	KCC District Office #1 - 210 E. Frontview, Suite A, Dodge City, KS 67801	Phone 620.682.7933
	KCC District Office #2 - 3450 N. Rock Road, Building 600, Suite 601, Wichita, KS 67226	Phone 316.337.7400
	KCC District Office #3 - 137 E. 21st St., Chanute, KS 66720	Phone 620.902.6450
	KCC District Office #4 - 2301 E. 13th Street, Hays, KS 67601-2651	Phone 785.261.6250

Group: Belpre Well: Lunz A 4-21 (acquired on: 03/05/21 13:29:09)



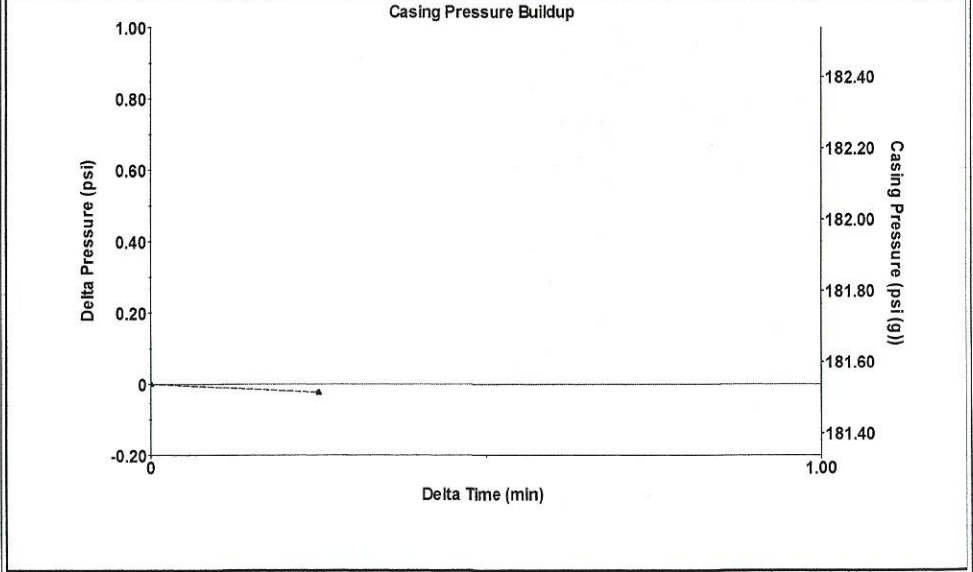
Filter Type High Pass Automatic Collar Count Yes Time 6.373 sec
 Manual Acoustic Velo 1313.81 ft/s Manual JTS/sec 20.6186 Joints 132.951 Jts
 Depth 4235.82 ft

[1.5 to 2.5 (Sec)]



Analysis Method: Automatic

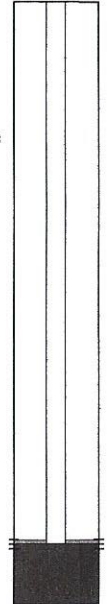
Group: Belpre Well: Lunz A 4-21 (acquired on: 03/05/21 13:29:09)



Change in Pressure -0.02 psi PT13440
 Range 0 - ? psi
 Change in Time 0.25 min

Group: Belpre Well: Lunz A 4-21 (acquired on: 03/05/21 13:29:09)

Production			
Current	Potential	Casing Pressure	Producing
Oil -*-	-* BBL/D	181.5 psi (g)	
Water -*-	-* BBL/D	Casing Pressure Buildup	Annular Gas Flow
Gas -*-	-* Mscf/D	-0.0 psi	0 Mscf/D
		0.25 min	% Liquid
		Gas/Liquid Interface Pressure	100 %
IPR Method	Vogel	201.3 psi (g)	
PBHP/SBHP	-* -		
Production Efficiency	0.0		
		Liquid Level Depth	
Oil 40 deg.API		4235.82 ft	
Water 1.05 Sp.Gr.H2O			
Gas 0.67 Sp.Gr.AIR		Pump Intake Depth	
		4270.00 ft	
Acoustic Velocity	1329.3 ft/s	Formation Depth	
		4271.00 ft	

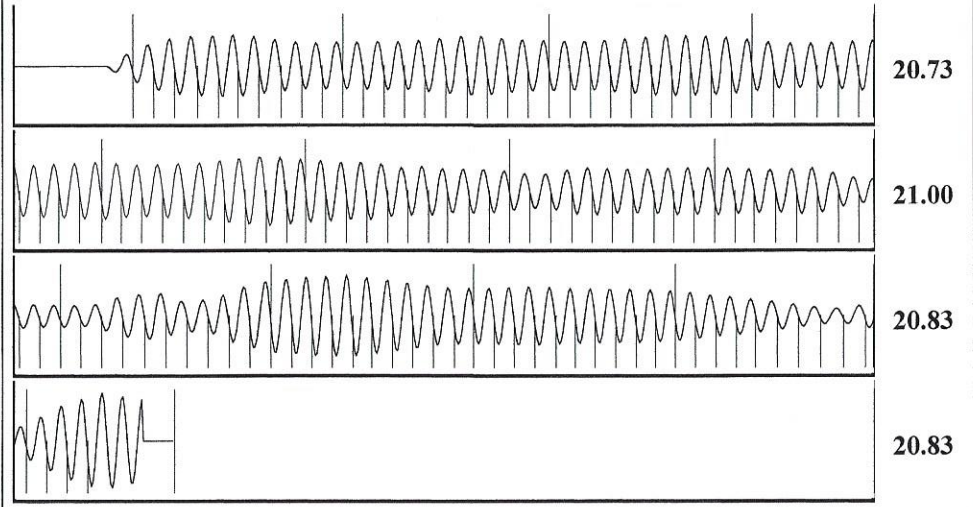


Producing
 Annular Gas Flow 0 Mscf/D
 % Liquid 100 %
 Pump Intake 212.7 psi (g)
 Producing BHP 213.1 psi (g)
 Static BHP -*- psi (g)

Formation Submergence
 Total Gaseous Liquid Column HT (TVD) 34 ft
 Equivalent Gas Free Liquid HT (TVD) 34 ft

Acoustic Test

Group: Belpre Well: Lunz A 4-21 (acquired on: 03/05/21 13:29:09)



Acoustic Velocity	1329.3 ft/s	Joints counted	123
Joints Per Second	20.8616 jts/sec	Joints to liquid level	132.951
Depth to liquid level	4235.82 ft	Filter Width	18.6186
Automatic Collar Count	Yes	Time to 1st Collar	0.276
			6.172

Conservation Division
District Office No. 1
210 E. Frontview, Suite A
Dodge City, KS 67801



Phone: 620-682-7933
<http://kcc.ks.gov/>

Andrew J. French, Chairperson
Dwight D. Keen, Commissioner
Susan K. Duffy, Commissioner

Laura Kelly, Governor

April 20, 2021

Loveness Mpanje
F. G. Holl Company L.L.C.
9431 E CENTRAL STE 100
WICHITA, KS 67206-2563

Re: Temporary Abandonment
API 15-047-21229-00-00
LUNZ - A 4-21
NW/4 Sec.21-24S-16W
Edwards County, Kansas

Dear Loveness Mpanje:

"Your temporary abandonment (TA) application for the well listed above has been approved. In accordance with K.A.R. 82-3-111 the TA status of this well will expire 04/20/2022.

- * If you return this well to service or plug it, please notify the District Office.
- * If you sell this well you are required to file a Transfer of Operator form, T-1.
- * If the well will remain temporarily abandoned, you must submit a new TA application, CP-111, before 04/20/2022.

You may contact me at the number above if you have questions.

Very truly yours,

Michael Maier"