

KANSAS CORPORATION COMMISSION
OIL & GAS CONSERVATION DIVISION

TEMPORARY ABANDONMENT WELL APPLICATION

OPERATOR: License#
Name:
Address 1:
Address 2:
City: State: Zip:
Contact Person:
Phone:
Contact Person Email:
Field Contact Person:
Field Contact Person Phone:

API No. 15-
Spot Description:
Sec. Twp. S. R.
GPS Location: Lat: Long:
Datum: NAD27 NAD83 WGS84
County: Elevation:
Lease Name: Well #:
Well Type: Oil Gas OG WSW Other:
SWD Permit #: ENHR Permit #:
Gas Storage Permit #:
Spud Date: Date Shut-In:

Table with 7 columns: Conductor, Surface, Production, Intermediate, Liner, Tubing. Rows include Size, Setting Depth, Amount of Cement, Top of Cement, Bottom of Cement.

Casing Fluid Level from Surface: How Determined? Date:
Casing Squeeze(s): to w / sacks of cement, to w / sacks of cement. Date:
Do you have a valid Oil & Gas Lease? Yes No
Depth and Type: Junk in Hole at Tools in Hole at Casing Leaks: Yes No Depth of casing leak(s):
Type Completion: ALT. I ALT. II Depth of: DV Tool: w / sacks of cement Port Collar: w / sack of cement
Packer Type: Size: Inch Set at: Feet
Total Depth: Plug Back Depth: Plug Back Method:

Geological Date:

Table with 4 columns: Formation Name, Formation Top, Formation Base, Completion Information. Rows 1 and 2.

UNDER PENALTY OF PERJURY I HEREBY ATTEST THAT THE INFORMATION CONTAINED HEREIN IS TRUE AND CORRECT TO THE BEST OF MY KNOWLEDGE

Submitted Electronically

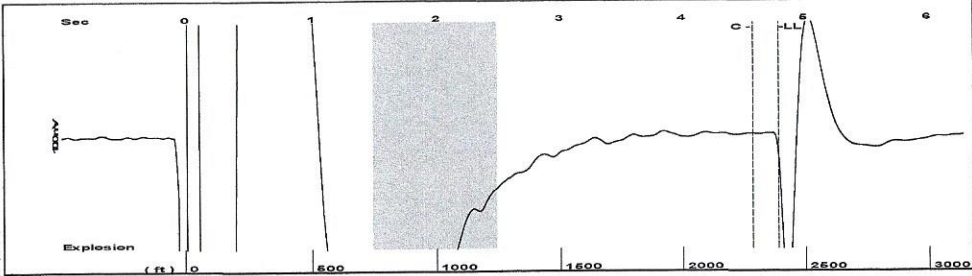
Do NOT Write in This Space - KCC USE ONLY
Date Tested: Results: Date Plugged: Date Repaired: Date Put Back in Service:
Review Completed by: Comments:
TA Approved: Yes Denied Date:

Mail to the Appropriate KCC Conservation Office:

Table with 3 columns: District Office #, Address, Phone. Rows 1-4.

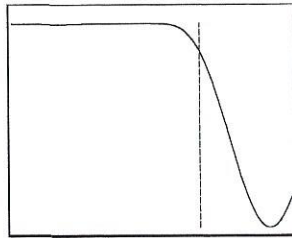
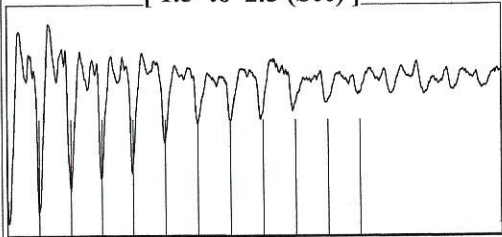


Group: Radium Well: Langer 1-4 (acquired on: 03/08/21 11:37:51)



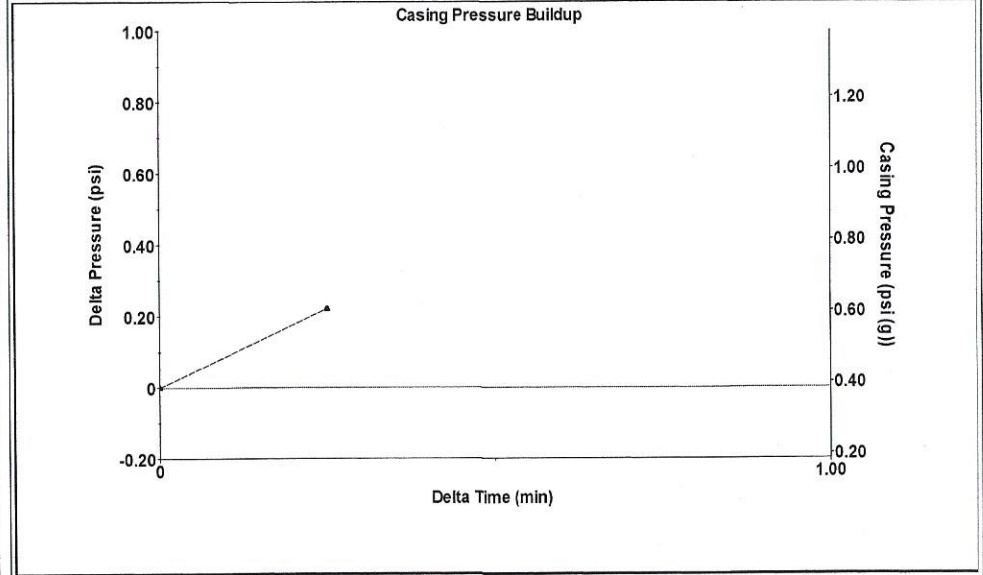
Filter Type High Pass Automatic Collar Count Yes Time 4.797 sec
 Manual Acoustic Velo978.395 ft/s Manual JTS/sec 15.4321 Joints 75.3688 Jts
 Depth 2389.19 ft

[1.5 to 2.5 (Sec)]



Analysis Method: Automatic

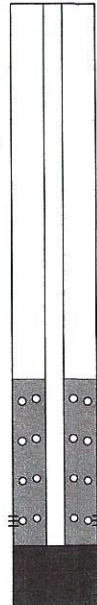
Group: Radium Well: Langer 1-4 (acquired on: 03/08/21 11:37:51)



Change in Pressure 0.22 psi PT13440
 Range 0 - ? psi
 Change in Time 0.25 min

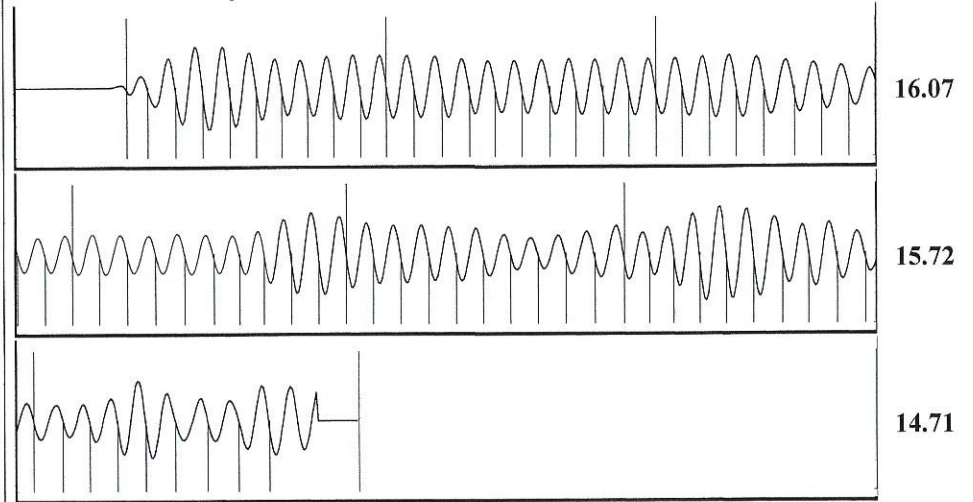
Group: Radium Well: Langer 1-4 (acquired on: 03/08/21 11:37:51)

Production		Casing Pressure	0.4 psi (g)
Current	Potential	Casing Pressure Buildup	0.2 psi
Oil - *-	- *- BBL/D	0.25 min	
Water - *-	- *- BBL/D	Gas/Liquid Interface Pressure	1.6 psi (g)
Gas - *-	- *- Mscf/D		
IPR Method	Vogel	Liquid Level Depth	2389.19 ft
PBHP/SBHP	- *-	Pump Intake Depth	3650.00 ft
Production Efficiency	0.0	Formation Depth	3460.00 ft
Oil 40 deg.API			
Water 1.05 Sp.Gr.H2O			
Gas 0.98 Sp.Gr.AIR			
Acoustic Velocity	996.118 ft/s		
Formation Submergence			
Total Gaseous Liquid Column HT (TVD)	1261 ft		
Equivalent Gas Free Liquid HT (TVD)	608 ft		
Acoustic Test			



Producing
 Annular Gas Flow 15 Mscf/D
 % Liquid 39 %
 Pump Intake 209.2 psi (g)
 Producing BHP 145.0 psi (g)
 Static BHP - *- psi (g)

Group: Radium Well: Langer 1-4 (acquired on: 03/08/21 11:37:51)



Acoustic Velocity 996.118 ft/s Joints counted 68
 Joints Per Second 15.7116 jts/sec Joints to liquid level 75.3688
 Depth to liquid level 2389.19 ft Filter Width 13.4321 17.4321
 Automatic Collar Count Yes Time to 1st Collar 0.26 4.588

Conservation Division
District Office No. 1
210 E. Frontview, Suite A
Dodge City, KS 67801



Phone: 620-682-7933
<http://kcc.ks.gov/>

Andrew J. French, Chairperson
Dwight D. Keen, Commissioner
Susan K. Duffy, Commissioner

Laura Kelly, Governor

April 20, 2021

Loveness Mpanje
F. G. Holl Company L.L.C.
9431 E CENTRAL STE 100
WICHITA, KS 67206-2563

Re: Temporary Abandonment
API 15-185-00598-00-00
LANGER 1
NE/4 Sec.04-21S-14W
Stafford County, Kansas

Dear Loveness Mpanje:

"Your temporary abandonment (TA) application for the well listed above has been approved. In accordance with K.A.R. 82-3-111 the TA status of this well will expire 04/20/2022.

- * If you return this well to service or plug it, please notify the District Office.
- * If you sell this well you are required to file a Transfer of Operator form, T-1.
- * If the well will remain temporarily abandoned, you must submit a new TA application, CP-111, before 04/20/2022.

You may contact me at the number above if you have questions.

Very truly yours,

Michael Maier"