

KANSAS CORPORATION COMMISSION
OIL & GAS CONSERVATION DIVISION

TEMPORARY ABANDONMENT WELL APPLICATION

OPERATOR: License#
Name:
Address 1:
Address 2:
City: State: Zip:
Contact Person:
Phone:
Contact Person Email:
Field Contact Person:
Field Contact Person Phone:

API No. 15-
Spot Description:
Sec. Twp. S. R.
GPS Location: Lat: Long:
Datum: NAD27 NAD83 WGS84
County: Elevation:
Lease Name: Well #:
Well Type: Oil Gas OG WSW Other:
SWD Permit #: ENHR Permit #:
Gas Storage Permit #:
Spud Date: Date Shut-In:

Table with 7 columns: Conductor, Surface, Production, Intermediate, Liner, Tubing. Rows include Size, Setting Depth, Amount of Cement, Top of Cement, Bottom of Cement.

Casing Fluid Level from Surface: How Determined? Date:
Casing Squeeze(s): to w / sacks of cement, to w / sacks of cement. Date:
Do you have a valid Oil & Gas Lease? Yes No
Depth and Type: Junk in Hole at Tools in Hole at Casing Leaks: Yes No Depth of casing leak(s):
Type Completion: ALT. I ALT. II Depth of: DV Tool: w / sacks of cement Port Collar: w / sack of cement
Packer Type: Size: Inch Set at: Feet
Total Depth: Plug Back Depth: Plug Back Method:

Geological Data:

Table with 4 columns: Formation Name, Formation Top, Formation Base, Completion Information. Rows 1 and 2.

UNDER PENALTY OF PERJURY I HEREBY ATTEST THAT THE INFORMATION CONTAINED HEREIN IS TRUE AND CORRECT TO THE BEST OF MY KNOWLEDGE

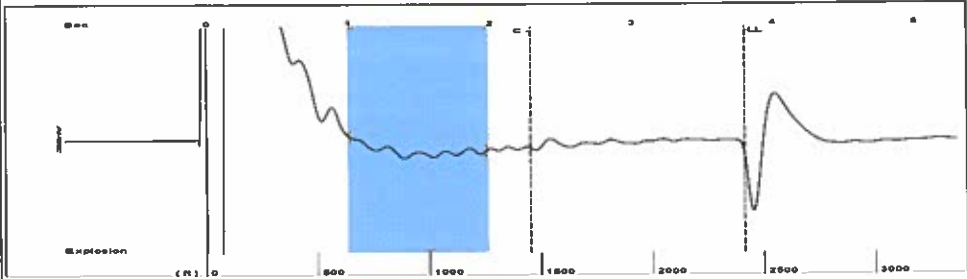
Submitted Electronically

Do NOT Write in This Space - KCC USE ONLY
Date Tested: Results: Date Plugged: Date Repaired: Date Put Back in Service:
Review Completed by: Comments:
TA Approved: Yes Denied Date:

Mail to the Appropriate KCC Conservation Office:

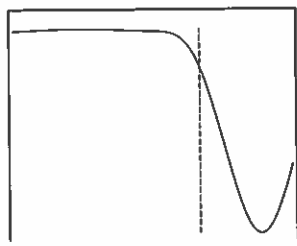
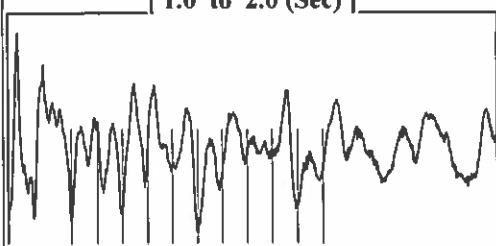
Map of Kansas with 4 numbered districts. Table with 2 columns: Office Address, Phone Number. Rows 1-4.

Group: TA'D WELLS Well: Kelly A-1 (acquired on: 04/13/21 13:50:23 )



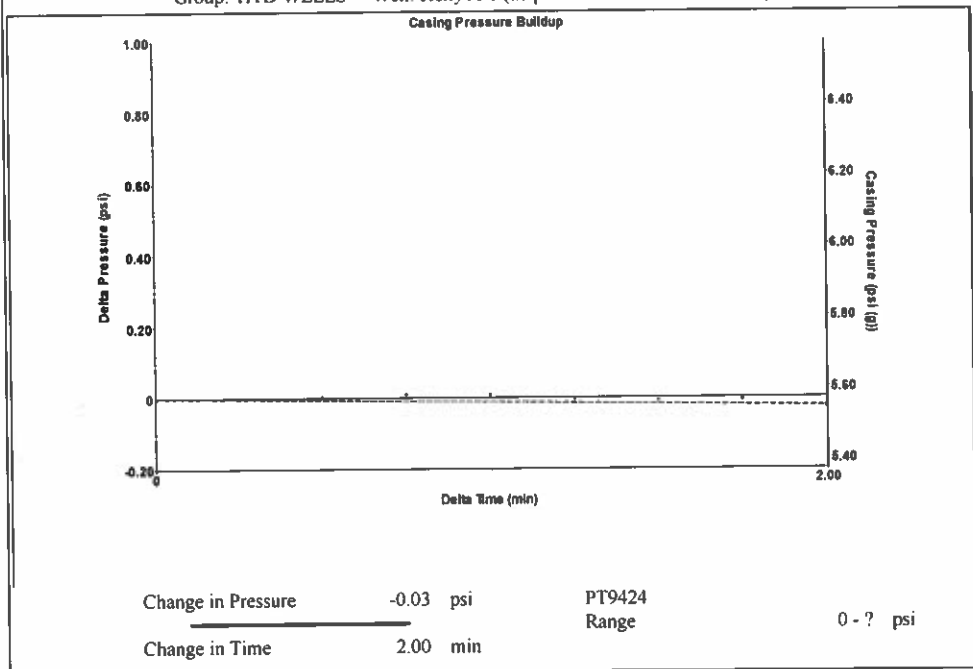
Filter Type High Pass Automatic Collar Count Yes Time 3.801 sec  
 Manual Acoustic Velocity 1228.68 ft/s Manual JTS/sec 19.3798 Joints 76.1182 Jts  
 Depth 2412.95 ft

[ 1.0 to 2.0 (Sec) ]



Analysis Method: Automatic

Group: TA'D WELLS Well: Kelly A-1 (acquired on: 04/13/21 13:50:23 )



Change in Pressure -0.03 psi PT9424  
 Change in Time 2.00 min Range 0 - ? psi

Group: TA'D WELLS Well: Kelly A-1 (acquired on: 04/13/21 13:50:23 )

Production Current Potential  
 Oil - \* - - \* - BBL/D  
 Water - \* - - \* - BBL/D  
 Gas - \* - - \* - Mscf/D

IPR Method Vogel  
 PBHP/SBHP - \* -  
 Production Efficiency 0.0

Oil 40 deg.API  
 Water 1.05 Sp.Gr.H2O  
 Gas 0.73 Sp.Gr.AIR

Acoustic Velocity 1269.64 ft/s

Formation Submergence  
 Total Gaseous Liquid Column HT (TVD) 310 ft  
 Equivalent Gas Free Liquid HT (TVD) 310 ft

Acoustic Test

Casing Pressure 5.6 psi (g)  
 Casing Pressure Buildup -0.025 psi  
 2.00 min  
 Gas/Liquid Interface Pressure 6.8 psi (g)

Liquid Level Depth 2412.95 ft

Pump Intake Depth 2723.00 ft

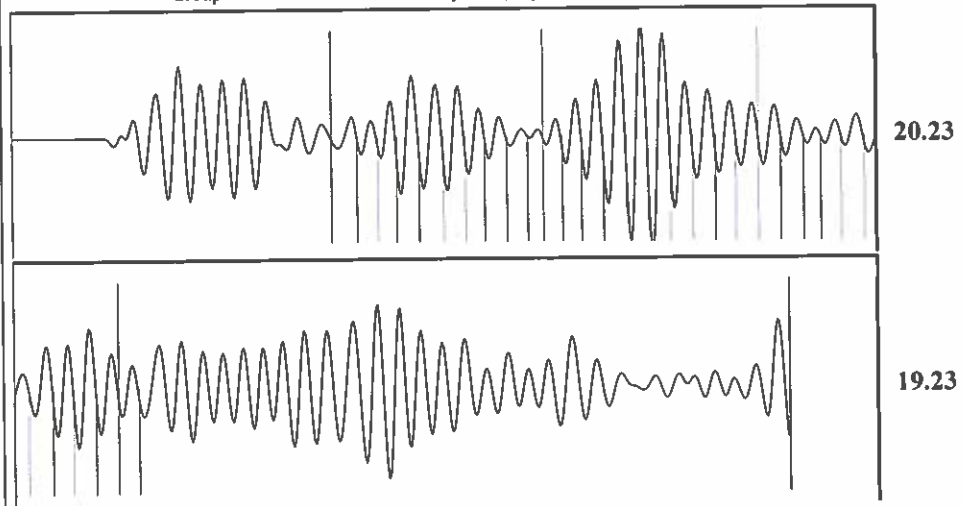
Formation Depth 2723.00 ft



Producing  
 Annular Gas Flow 0 Mscf/D  
 % Liquid 100 %

Pump Intake 111.8 psi (g)  
 Producing BHP 111.8 psi (g)  
 Static BHP - \* - psi (g)

Group: TA'D WELLS Well: Kelly A-1 (acquired on: 04/13/21 13:50:23 )



Acoustic Velocity 1269.64 ft/s Joints counted 31  
 Joints Per Second 20.0258 jts/sec Joints to liquid level 76.1182  
 Depth to liquid level 2412.95 ft Filter Width 17.3798 21.3798  
 Automatic Collar Count Yes Time to 1st Collar 0.74 2.288

April 20, 2021

Katherine McClurkan  
Merit Energy Company, LLC  
13727 Noel Road, Suite 1200  
DALLAS, TX 75240-7362

Re: Temporary Abandonment  
API 15-129-20224-00-00  
Kelley A 1  
NE/4 Sec.15-33S-40W  
Morton County, Kansas

Dear Katherine McClurkan:

"Your temporary abandonment (TA) application for the well listed above has been approved. In accordance with K.A.R. 82-3-111 the TA status of this well will expire 04/20/2022.

- \* If you return this well to service or plug it, please notify the District Office.
- \* If you sell this well you are required to file a Transfer of Operator form, T-1.
- \* If the well will remain temporarily abandoned, you must submit a new TA application, CP-111, before 04/20/2022.

You may contact me at the number above if you have questions.

Very truly yours,

Michael Maier"