

KANSAS CORPORATION COMMISSION
OIL & GAS CONSERVATION DIVISION

TEMPORARY ABANDONMENT WELL APPLICATION

OPERATOR: License#
Name:
Address 1:
Address 2:
City: State: Zip:
Contact Person:
Phone:
Contact Person Email:
Field Contact Person:
Field Contact Person Phone:

API No. 15-
Spot Description:
Sec. Twp. S. R.
feet from N / S Line of Section
feet from E / W Line of Section
GPS Location: Lat: , Long:
Datum: NAD27 NAD83 WGS84
County: Elevation: GL KB
Lease Name: Well #:
Well Type: (check one) Oil Gas OG WSW Other:
SWD Permit #: ENHR Permit #:
Gas Storage Permit #:
Spud Date: Date Shut-In:

Table with 7 columns: Conductor, Surface, Production, Intermediate, Liner, Tubing. Rows include Size, Setting Depth, Amount of Cement, Top of Cement, Bottom of Cement.

Casing Fluid Level from Surface: How Determined? Date:
Casing Squeeze(s): to w / sacks of cement, to w / sacks of cement. Date:
Do you have a valid Oil & Gas Lease? Yes No
Depth and Type: Junk in Hole at Tools in Hole at Casing Leaks: Yes No Depth of casing leak(s):
Type Completion: ALT. I ALT. II Depth of: DV Tool: w / sacks of cement Port Collar: w / sack of cement
Packer Type: Size: Inch Set at: Feet
Total Depth: Plug Back Depth: Plug Back Method:

Geological Data:

Table with 4 columns: Formation Name, Formation Top, Formation Base, Completion Information. Rows 1 and 2.

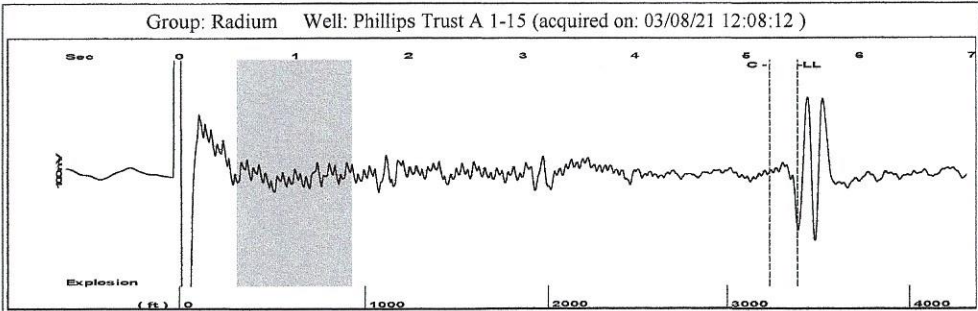
UNDER PENALTY OF PERJURY I HEREBY ATTEST THAT THE INFORMATION CONTAINED HEREIN IS TRUE AND CORRECT TO THE BEST OF MY KNOWLEDGE

Submitted Electronically

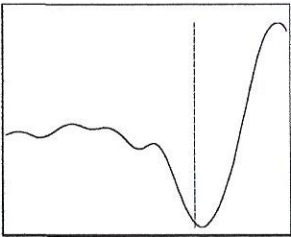
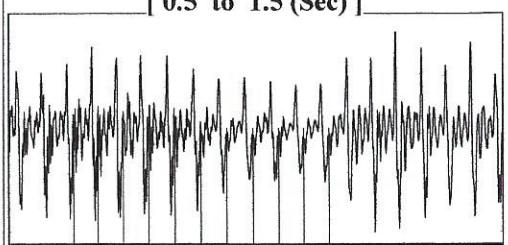
Do NOT Write in This Space - KCC USE ONLY
Date Tested: Results: Date Plugged: Date Repaired: Date Put Back in Service:
Review Completed by: Comments:
TA Approved: Yes Denied Date:

Mail to the Appropriate KCC Conservation Office:

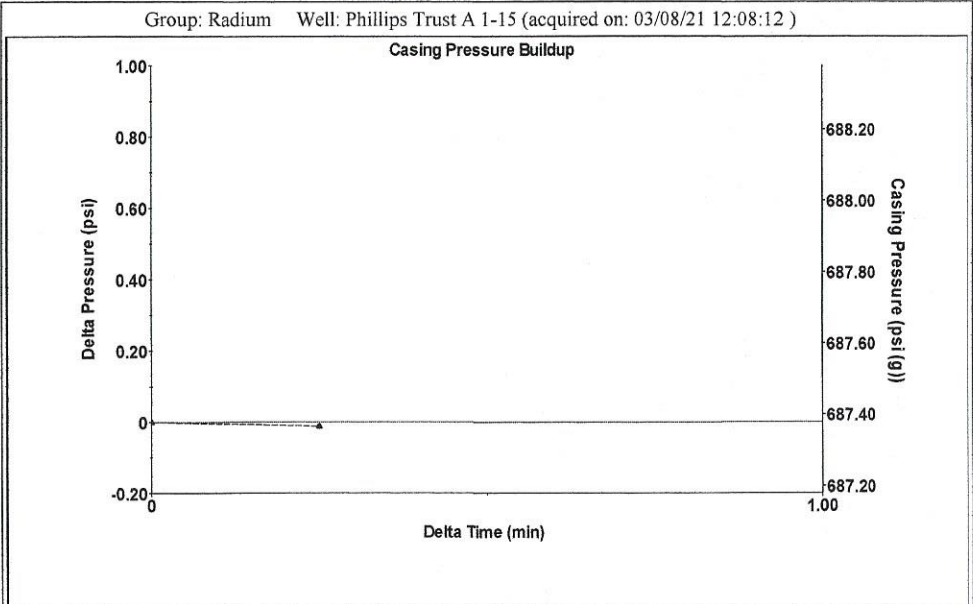
Table with 3 columns: District Office #, Address, Phone. Rows 1-4.



Filter Type High Pass Automatic Collar Count Yes Time 5.447 sec
 Manual Acoustic Velo 1235.87 ft/s Manual JTS/sec 19.4932 Joints 106.696 Jts
 Depth 3382.27 ft



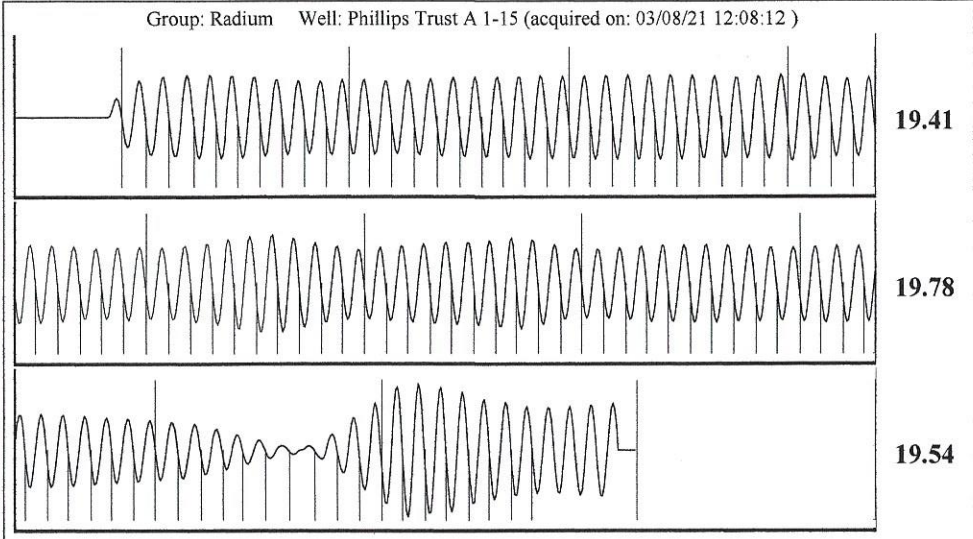
Analysis Method: Automatic



Change in Pressure -0.01 psi PT13440
 Range 0 - ? psi
 Change in Time 0.25 min

Group: Radium Well: Phillips Trust A 1-15 (acquired on: 03/08/21 12:08:12)

Production		Casing Pressure			Producing	
Current	Potential	BBL/D	687.4 psi (g)		Annular Gas Flow	0 Mscf/D
Oil -*-	-*-	BBL/D	Casing Pressure Buildup		% Liquid	100 %
Water -*-	-*-	Mscf/D	-0.0 psi			
Gas -*-	-*-		0.25 min			
IPR Method	Vogel	Gas/Liquid Interface Pressure	751.6 psi (g)			
PBHP/SBHP	-*-					
Production Efficiency	0.0	Liquid Level Depth	3382.27 ft			
Oil 40 deg.API		Pump Intake Depth	-* - ft			
Water 1.05 Sp.Gr.H2O		Formation Depth	3510.00 ft			
Gas 0.69 Sp.Gr.AIR						
Acoustic Velocity	1241.88 ft/s			Pump Intake	-*- psi (g)	
				Producing BHP	809.7 psi (g)	
				Static BHP	-*- psi (g)	
Formation Submergence		Total Gaseous Liquid Column HT (TVD)	128 ft			
		Equivalent Gas Free Liquid HT (TVD)	128 ft			
Acoustic Test						



Acoustic Velocity 1241.88 ft/s Joints counted 97
 Joints Per Second 19.588 jts/sec Joints to liquid level 106.696
 Depth to liquid level 3382.27 ft Filter Width 17.4932 21.4932
 Automatic Collar Count Yes Time to 1st Collar 0.248 5.2

Conservation Division
District Office No. 4
2301 E. 13th Street
Hays, KS 67601-2651



Phone: 785-261-6250
Fax: 785-625-0564
<http://kcc.ks.gov/>

Andrew J. French, Chairperson
Dwight D. Keen, Commissioner
Susan K. Duffy, Commissioner

Laura Kelly, Governor

April 26, 2021

Loveness Mpanje
F. G. Holl Company L.L.C.
9431 E CENTRAL STE 100
WICHITA, KS 67206-2563

Re: Temporary Abandonment
API 15-009-25394-00-00
PHILLIP TRUST A 1-15
NE/4 Sec.15-20S-14W
Barton County, Kansas

Dear Loveness Mpanje:

"Your temporary abandonment (TA) application for the well listed above has been approved. In accordance with K.A.R. 82-3-111 the TA status of this well will expire 04/26/2022.

- * If you return this well to service or plug it, please notify the District Office.
- * If you sell this well you are required to file a Transfer of Operator form, T-1.
- * If the well will remain temporarily abandoned, you must submit a new TA application, CP-111, before 04/26/2022.

You may contact me at the number above if you have questions.

Very truly yours,

RICHARD WILLIAMS"