

KANSAS CORPORATION COMMISSION
OIL & GAS CONSERVATION DIVISION

TEMPORARY ABANDONMENT WELL APPLICATION

OPERATOR: License#
Name:
Address 1:
Address 2:
City: State: Zip:
Contact Person:
Phone:
Contact Person Email:
Field Contact Person:
Field Contact Person Phone:

API No. 15-
Spot Description:
Sec. Twp. S. R.
feet from N / S Line of Section
feet from E / W Line of Section
GPS Location: Lat: , Long:
Datum: NAD27 NAD83 WGS84
County: Elevation: GL KB
Lease Name: Well #:
Well Type: (check one) Oil Gas OG WSW Other:
SWD Permit #: ENHR Permit #:
Gas Storage Permit #:
Spud Date: Date Shut-In:

Table with 7 columns: Conductor, Surface, Production, Intermediate, Liner, Tubing. Rows include Size, Setting Depth, Amount of Cement, Top of Cement, Bottom of Cement.

Casing Fluid Level from Surface: How Determined? Date:
Casing Squeeze(s): to w / sacks of cement, to w / sacks of cement. Date:
Do you have a valid Oil & Gas Lease? Yes No
Depth and Type: Junk in Hole at Tools in Hole at Casing Leaks: Yes No Depth of casing leak(s):
Type Completion: ALT. I ALT. II Depth of: DV Tool: w / sacks of cement Port Collar: w / sack of cement
Packer Type: Size: Inch Set at: Feet
Total Depth: Plug Back Depth: Plug Back Method:

Geological Date:

Table with 4 columns: Formation Name, Formation Top, Formation Base, Completion Information. Rows 1 and 2.

UNDER PENALTY OF PERJURY I HEREBY ATTEST THAT THE INFORMATION CONTAINED HEREIN IS TRUE AND CORRECT TO THE BEST OF MY KNOWLEDGE

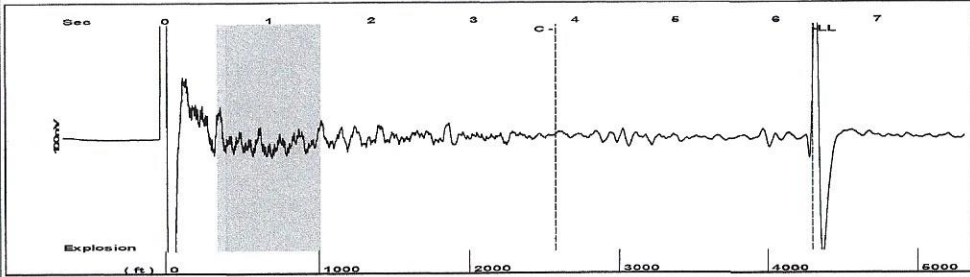
Submitted Electronically

Do NOT Write in This Space - KCC USE ONLY
Date Tested: Results: Date Plugged: Date Repaired: Date Put Back in Service:
Review Completed by: Comments:
TA Approved: Yes Denied Date:

Mail to the Appropriate KCC Conservation Office:

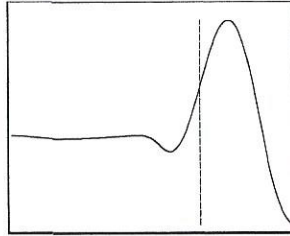
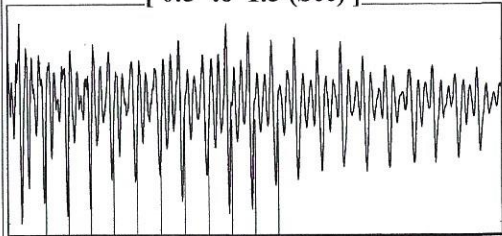
Table with 3 columns: District Office #, Address, Phone. Rows 1-4.

Group: Belpre Well: Scheufler 3-30 (acquired on: 03/05/21 11:36:39)



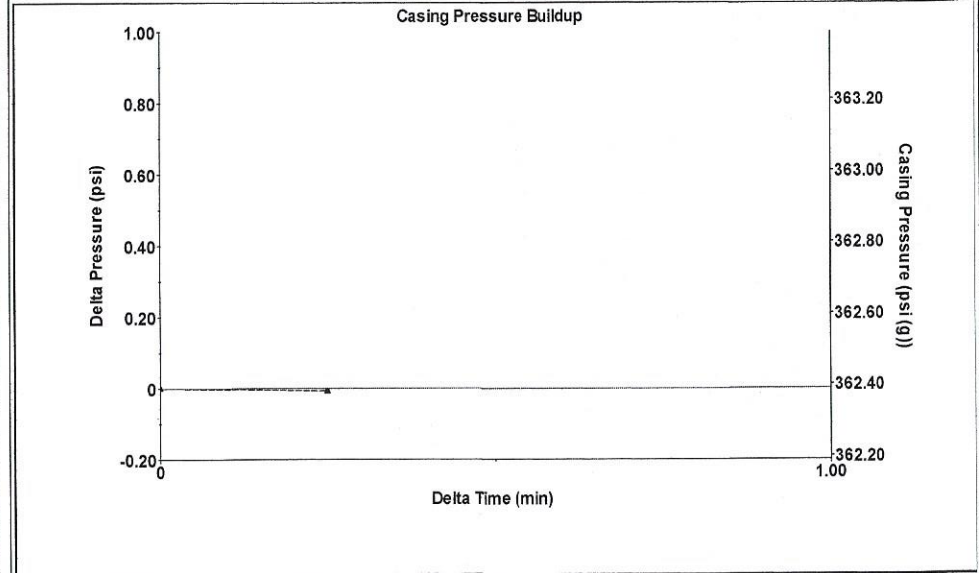
Filter Type High Pass Automatic Collar Count Yes Time 6.354 sec
 Manual Acoustic Velo 1338.33 ft/s Manual JTS/sec 21.4133 Joints 137.501 Jts
 Depth 4296.91 ft

[0.5 to 1.5 (Sec)]



Analysis Method: Automatic

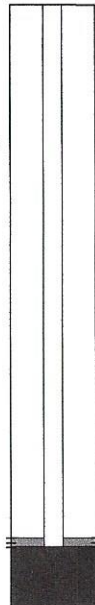
Group: Belpre Well: Scheufler 3-30 (acquired on: 03/05/21 11:36:39)



Change in Pressure -0.01 psi PT13440
 Range 0 - ? psi
 Change in Time 0.25 min

Group: Belpre Well: Scheufler 3-30 (acquired on: 03/05/21 11:36:39)

Production			
Current	Potential	Casing Pressure	362.4 psi (g)
Oil -*-	-* BBL/D	Casing Pressure Buildup	-0.0 psi
Water -*-	-* BBL/D		0.25 min
Gas -*-	-* Mscf/D	Gas/Liquid Interface Pressure	400.0 psi (g)
IPR Method	Vogel	Liquid Level Depth	4296.91 ft
PBHP/SBHP	-* -	Pump Intake Depth	4375.00 ft
Production Efficiency	0.0	Formation Depth	4338.00 ft
Oil 40 deg.API			
Water 1.05 Sp.Gr.H2O			
Gas 0.63 Sp.Gr.AIR			
Acoustic Velocity	1352.51 ft/s		

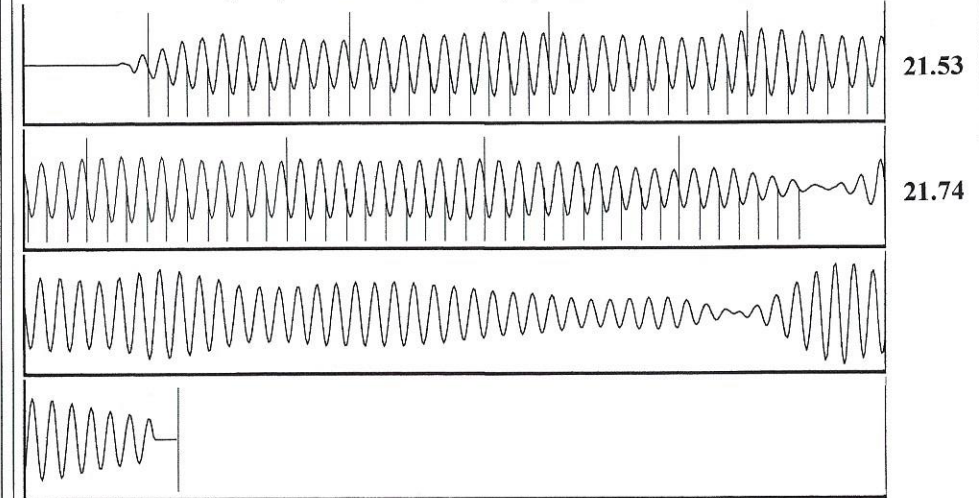


Producing
 Annular Gas Flow 0 Mscf/D
 % Liquid 100 %
 Pump Intake 425.5 psi (g)
 Producing BHP 413.4 psi (g)
 Static BHP -*- psi (g)

Formation Submergence
 Total Gaseous Liquid Column HT (TVD) 78 ft
 Equivalent Gas Free Liquid HT (TVD) 78 ft

Acoustic Test

Group: Belpre Well: Scheufler 3-30 (acquired on: 03/05/21 11:36:39)



Acoustic Velocity	1352.51 ft/s	Joints counted	76
Joints Per Second	21.6401 jts/sec	Joints to liquid level	137.501
Depth to liquid level	4296.91 ft	Filter Width	19.4133 23.4133
Automatic Collar Count	Yes	Time to 1st Collar	0.288 3.8

Conservation Division
District Office No. 1
210 E. Frontview, Suite A
Dodge City, KS 67801



Phone: 620-682-7933
<http://kcc.ks.gov/>

Andrew J. French, Chairperson
Dwight D. Keen, Commissioner
Susan K. Duffy, Commissioner

Laura Kelly, Governor

April 27, 2021

Loveness Mpanje
F. G. Holl Company L.L.C.
9431 E CENTRAL STE 100
WICHITA, KS 67206-2563

Re: Temporary Abandonment
API 15-047-21326-00-00
SCHEUFLEER, E.D. 3-30
W/2 Sec.30-24S-16W
Edwards County, Kansas

Dear Loveness Mpanje:

"Your temporary abandonment (TA) application for the well listed above has been approved. In accordance with K.A.R. 82-3-111 the TA status of this well will expire 04/27/2022.

- * If you return this well to service or plug it, please notify the District Office.
- * If you sell this well you are required to file a Transfer of Operator form, T-1.
- * If the well will remain temporarily abandoned, you must submit a new TA application, CP-111, before 04/27/2022.

You may contact me at the number above if you have questions.

Very truly yours,

Michael Maier"