

KANSAS CORPORATION COMMISSION
OIL & GAS CONSERVATION DIVISION

Form must be Typed
Form must be signed

TEMPORARY ABANDONMENT WELL APPLICATION

All blanks must be complete

OPERATOR: License#
Name:
Address 1:
Address 2:
City: State: Zip:
Contact Person:
Phone:
Contact Person Email:
Field Contact Person:
Field Contact Person Phone:

API No. 15-
Spot Description:
Sec. Twp. S. R.
GPS Location: Lat: Long:
Datum: NAD27 NAD83 WGS84
County: Elevation:
Lease Name: Well #:
Well Type: Oil Gas OG WSW Other:
SWD Permit #: ENHR Permit #:
Gas Storage Permit #:
Spud Date: Date Shut-In:

Table with 7 columns: Conductor, Surface, Production, Intermediate, Liner, Tubing. Rows include Size, Setting Depth, Amount of Cement, Top of Cement, Bottom of Cement.

Casing Fluid Level from Surface: How Determined? Date:
Casing Squeeze(s): to w / sacks of cement, to w / sacks of cement. Date:
Do you have a valid Oil & Gas Lease? Yes No
Depth and Type: Junk in Hole at Tools in Hole at Casing Leaks: Yes No Depth of casing leak(s):
Type Completion: ALT. I ALT. II Depth of: DV Tool: w / sacks of cement Port Collar: w / sack of cement
Packer Type: Size: Inch Set at: Feet
Total Depth: Plug Back Depth: Plug Back Method:

Geological Data:

Table with 4 columns: Formation Name, Formation Top, Formation Base, Completion Information. Rows 1 and 2.

UNDER PENALTY OF PERJURY I HEREBY ATTEST THAT THE INFORMATION CONTAINED HEREIN IS TRUE AND CORRECT TO THE BEST OF MY KNOWLEDGE

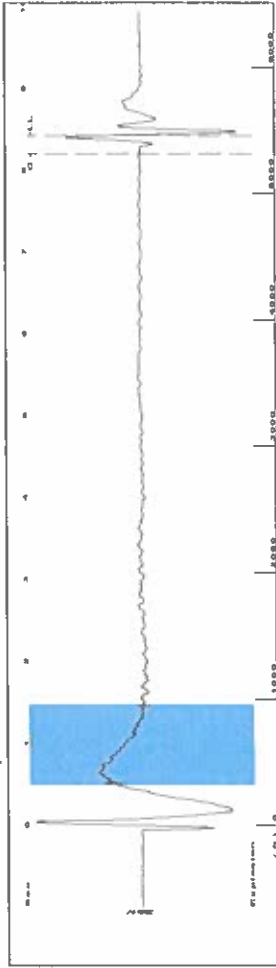
Submitted Electronically

Do NOT Write in This Space - KCC USE ONLY
Date Tested: Results: Date Plugged: Date Repaired: Date Put Back in Service:
Review Completed by: Comments:
TA Approved: Yes Denied Date:

Mail to the Appropriate KCC Conservation Office:

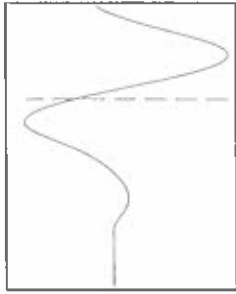
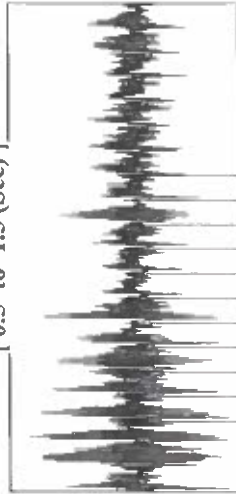
Table with 3 columns: Office Name, Address, Phone. Rows for District Office #1, #2, #3, #4.

Group: SUBLETTE Well: McCoy D-1 (acquired on: 04/06/21 13:21:00 )

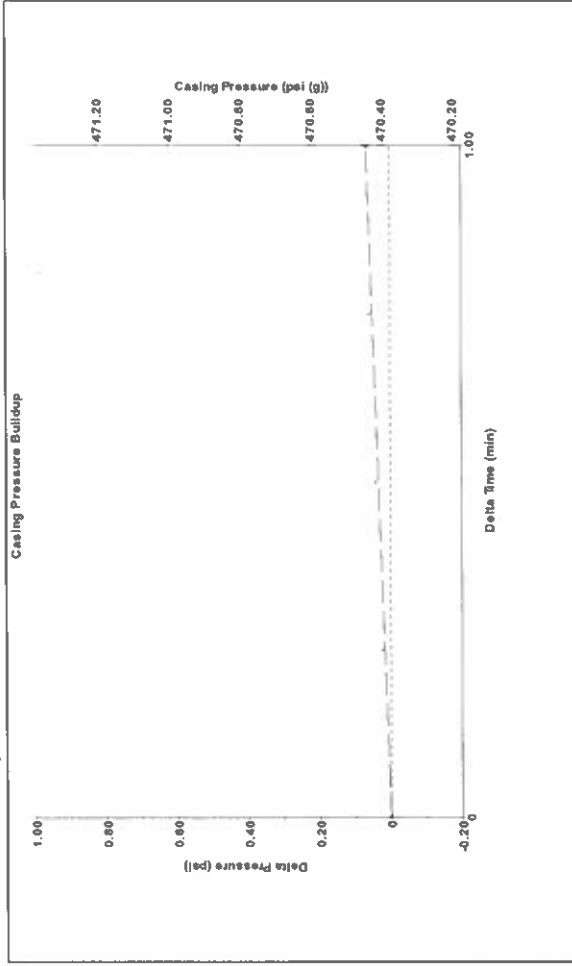


Filter Type High Pass Automatic Collar Count Yes  
 Manual Acoustic Velo 1260.44 ft/s Manual JTS/sec 19.8807  
 Time 8.432 sec  
 Joints 172.299 Jts  
 Depth 5461.87 ft

[ 0.5 to 1.5 (Sec) ]



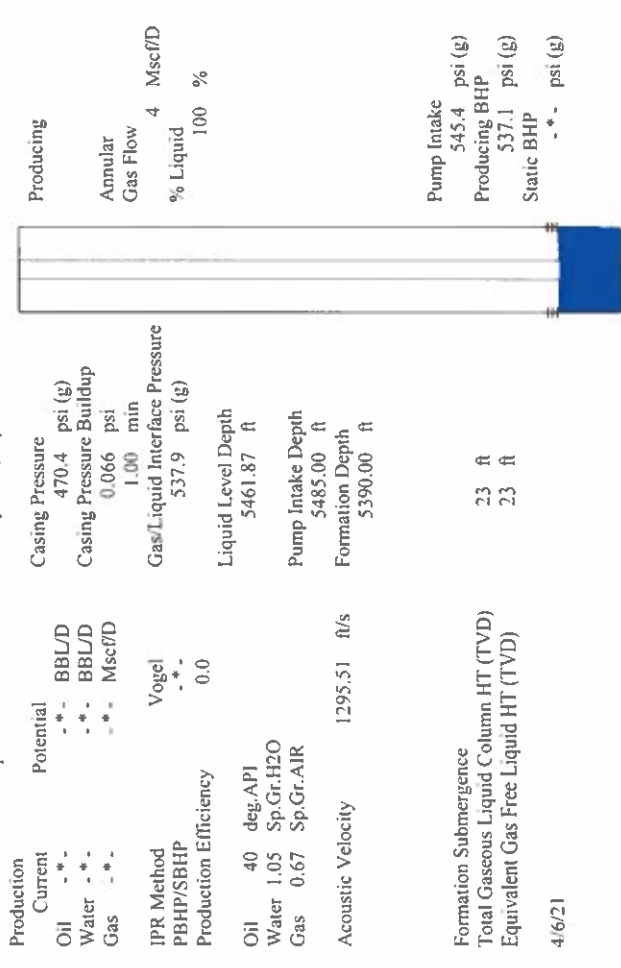
Group: SUBLETTE Well: McCoy D-1 (acquired on: 04/06/21 13:21:00 )



Change in Pressure 0.07 psi PT14679 Range  
 Change in Time 1.00 min

**Analysis Method: Automatic**

Group: SUBLETTE Well: McCoy D-1 (acquired on: 04/06/21 13:21:00 )

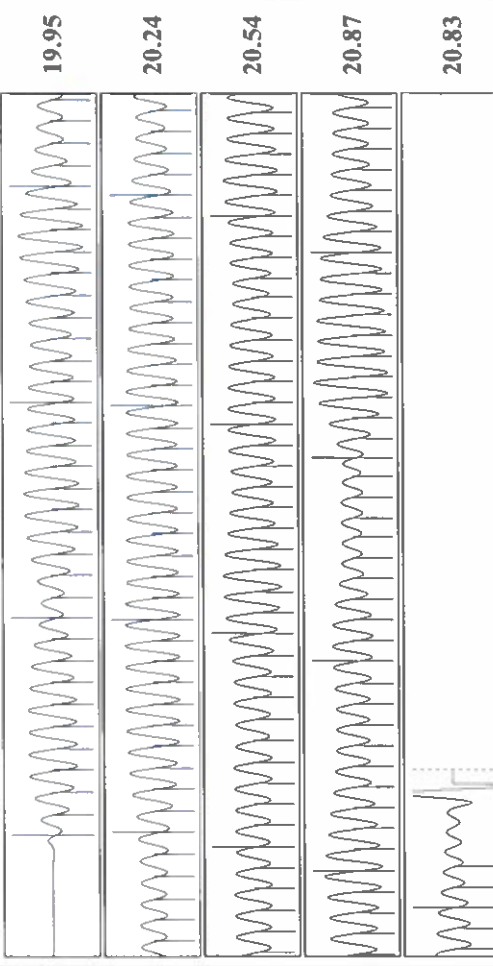


Production Current Potential  
 Oil - - BBL/D Casing Pressure 470.4 psi (g)  
 Water - - BBL/D Casing Pressure Buildup 0.066 psi  
 Gas - - Mscf/D 1.00 min  
 IPR Method Vogel Gas/Liquid Interface Pressure 537.9 psi (g)  
 PBHP/SBHP - - - -  
 Production Efficiency 0.0  
 Oil 40 deg API Liquid Level Depth 5461.87 ft  
 Water 1.05 Sp.Gr.H2O Pump Intake Depth 5485.00 ft  
 Gas 0.67 Sp.Gr.AIR Formation Depth 5390.00 ft  
 Acoustic Velocity 1295.51 ft/s

Formation Submergence  
 Total Gaseous Liquid Column HT (TVD) 23 ft  
 Equivalent Gas Free Liquid HT (TVD) 23 ft

4/6/21

Group: SUBLETTE Well: McCoy D-1 (acquired on: 04/06/21 13:21:00 )



Acoustic Velocity 1295.51 ft/s Joints counted 162  
 Joints Per Second 20.4339 Jts/sec Joints to liquid level 172.299  
 Depth to liquid level 5461.87 ft Filter Width 21.8807  
 Automatic Collar Count Yes Time to 1st Collar 8.208

Conservation Division  
District Office No. 1  
210 E. Frontview, Suite A  
Dodge City, KS 67801



Phone: 620-682-7933  
<http://kcc.ks.gov/>

Andrew J. French, Chairperson  
Dwight D. Keen, Commissioner  
Susan K. Duffy, Commissioner

Laura Kelly, Governor

April 27, 2021

Katherine McClurkan  
Merit Energy Company, LLC  
13727 Noel Road, Suite 1200  
Dallas, TX 75240

Re: Temporary Abandonment  
API 15-055-20511-00-00  
McCoy 1  
SW/4 Sec.21-26S-32W  
Finney County, Kansas

Dear Katherine McClurkan:

"Your temporary abandonment (TA) application for the well listed above has been approved. In accordance with K.A.R. 82-3-111 the TA status of this well will expire 04/27/2022.

- \* If you return this well to service or plug it, please notify the District Office.
- \* If you sell this well you are required to file a Transfer of Operator form, T-1.
- \* If the well will remain temporarily abandoned, you must submit a new TA application, CP-111, before 04/27/2022.

You may contact me at the number above if you have questions.

Very truly yours,

Michael Maier"