

KANSAS CORPORATION COMMISSION
OIL & GAS CONSERVATION DIVISION

TEMPORARY ABANDONMENT WELL APPLICATION

OPERATOR: License#
Name:
Address 1:
Address 2:
City: State: Zip:
Contact Person:
Phone:
Contact Person Email:
Field Contact Person:
Field Contact Person Phone:

API No. 15-
Spot Description:
Sec. Twp. S. R.
GPS Location: Lat, Long
Datum: NAD27, NAD83, WGS84
County: Elevation:
Lease Name: Well #:
Well Type: Oil, Gas, OG, WSW, Other
SWD Permit #: ENHR Permit #:
Gas Storage Permit #:
Spud Date: Date Shut-In:

Table with 7 columns: Conductor, Surface, Production, Intermediate, Liner, Tubing. Rows include Size, Setting Depth, Amount of Cement, Top of Cement, Bottom of Cement.

Casing Fluid Level from Surface: How Determined? Date:
Casing Squeeze(s): to w / sacks of cement, to w / sacks of cement. Date:
Do you have a valid Oil & Gas Lease? Yes No
Depth and Type: Junk in Hole at Tools in Hole at Casing Leaks: Yes No Depth of casing leak(s):
Type Completion: ALT. I ALT. II Depth of: DV Tool: w / sacks of cement Port Collar: w / sack of cement
Packer Type: Size: Inch Set at: Feet
Total Depth: Plug Back Depth: Plug Back Method:

Geological Date:

Table with 4 columns: Formation Name, Formation Top, Formation Base, Completion Information. Rows 1 and 2.

UNDER PENALTY OF PERJURY I HEREBY ATTEST THAT THE INFORMATION CONTAINED HEREIN IS TRUE AND CORRECT TO THE BEST OF MY KNOWLEDGE

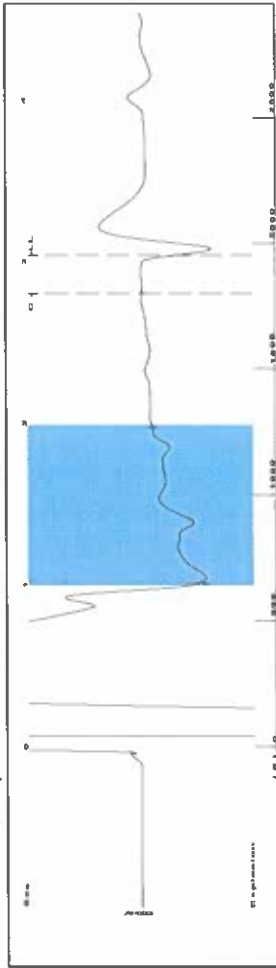
Submitted Electronically

Do NOT Write in This Space - KCC USE ONLY
Date Tested: Results: Date Plugged: Date Repaired: Date Put Back in Service:
Review Completed by: Comments:
TA Approved: Yes Denied Date:

Mail to the Appropriate KCC Conservation Office:

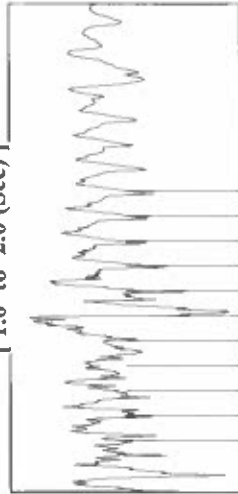
Table with 3 columns: District Office #, Address, Phone. Includes map of Kansas with numbered districts 1-4.

Group: SUBLETTE Well: Enterprises A-1 (acquired on: 04/06/21 11:14:42 )



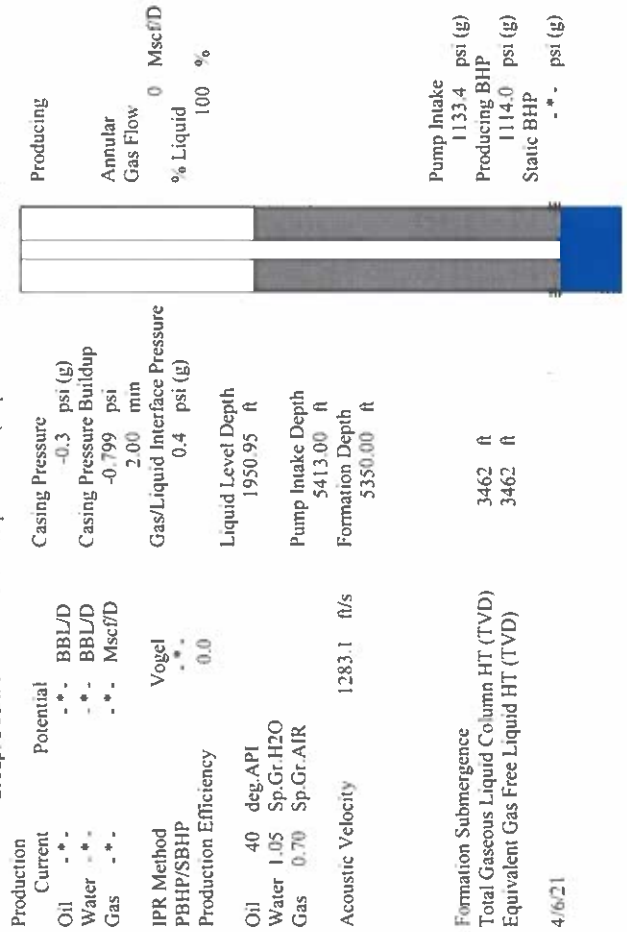
Filter Type High Pass Automatic Collar Count Yes Time 3.041 sec  
 Manual Acoustic Velo 1238.28 ft/s Manual JTS/sec 19.5312 Joints 61.544 Jts  
 Depth 1950.95 ft

[ 1.0 to 2.0 (Sec) ]

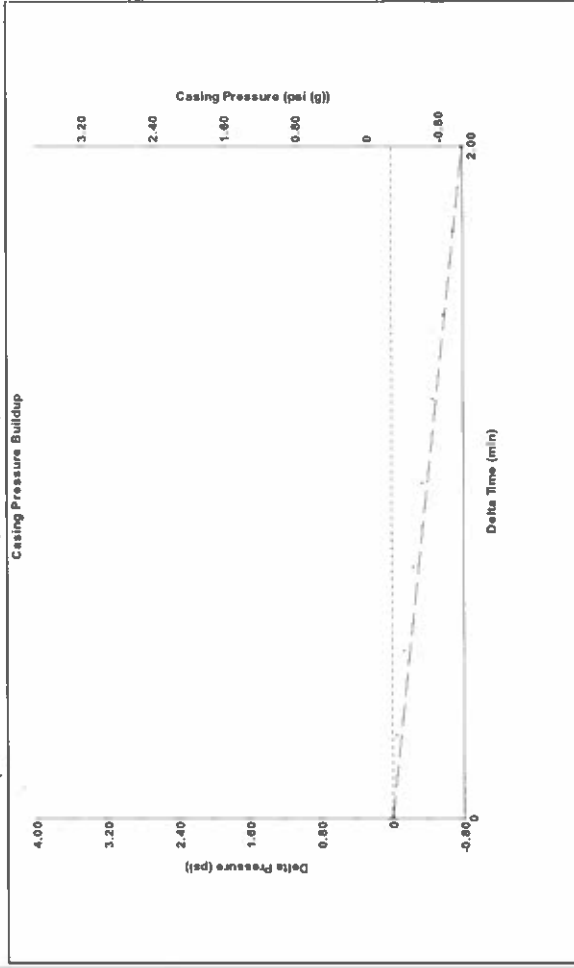


**Analysis Method: Automatic**

Group: SUBLETTE Well: Enterprises A-1 (acquired on: 04/06/21 11:14:42 )

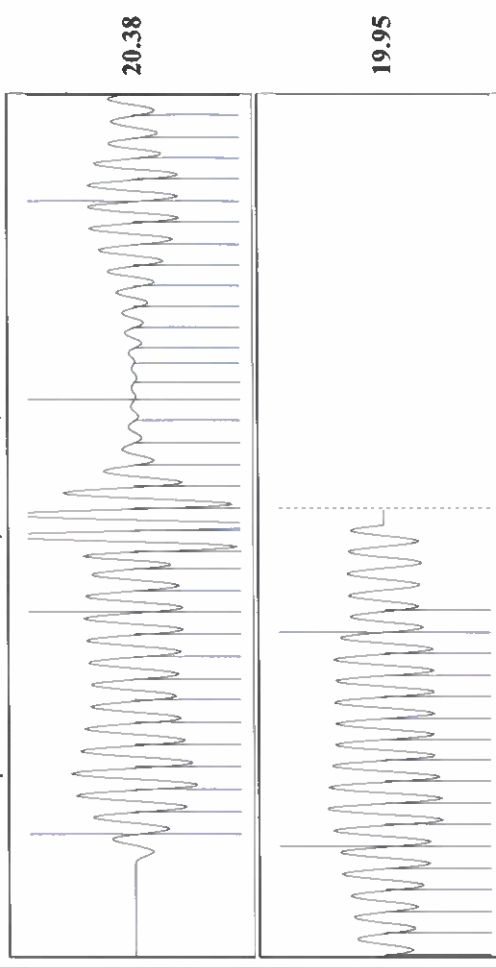


Group: SUBLETTE Well: Enterprises A-1 (acquired on: 04/06/21 11:14:42 )



Change in Pressure -0.80 psi Range PT14679  
 Change in Time 2.00 min

Group: SUBLETTE Well: Enterprises A-1 (acquired on: 04/06/21 11:14:42 )



Acoustic Velocity 1283.1 ft/s Joints counted 51  
 Joints Per Second 20.2381 jts/sec Joints to liquid level 61.544  
 Depth to liquid level 1950.95 ft Filter Width 21.5312  
 Automatic Collar Count Yes Time to 1st Collar 0.284 2.804

April 27, 2021

Katherine McClurkan  
Merit Energy Company, LLC  
13727 Noel Road, Suite 1200  
Dallas, TX 75240

Re: Temporary Abandonment  
API 15-081-21746-00-01  
Enterprises A 1  
NE/4 Sec.21-30S-32W  
Haskell County, Kansas

Dear Katherine McClurkan:

"Your temporary abandonment (TA) application for the well listed above has been approved. In accordance with K.A.R. 82-3-111 the TA status of this well will expire 04/27/2022.

- \* If you return this well to service or plug it, please notify the District Office.
- \* If you sell this well you are required to file a Transfer of Operator form, T-1.
- \* If the well will remain temporarily abandoned, you must submit a new TA application, CP-111, before 04/27/2022.

You may contact me at the number above if you have questions.

Very truly yours,

Michael Maier"