

KANSAS CORPORATION COMMISSION  
OIL & GAS CONSERVATION DIVISION

TEMPORARY ABANDONMENT WELL APPLICATION

OPERATOR: License# \_\_\_\_\_  
 Name: \_\_\_\_\_  
 Address 1: \_\_\_\_\_  
 Address 2: \_\_\_\_\_  
 City: \_\_\_\_\_ State: \_\_\_\_\_ Zip: \_\_\_\_\_ + \_\_\_\_\_  
 Contact Person: \_\_\_\_\_  
 Phone: ( \_\_\_\_\_ ) \_\_\_\_\_  
 Contact Person Email: \_\_\_\_\_  
 Field Contact Person: \_\_\_\_\_  
 Field Contact Person Phone: ( \_\_\_\_\_ ) \_\_\_\_\_

API No. 15- \_\_\_\_\_  
 Spot Description: \_\_\_\_\_  
 \_\_\_\_\_ - \_\_\_\_\_ - \_\_\_\_\_ - \_\_\_\_\_ Sec. \_\_\_\_\_ Twp. \_\_\_\_\_ S. R. \_\_\_\_\_  E  W  
 \_\_\_\_\_ feet from  N /  S Line of Section  
 \_\_\_\_\_ feet from  E /  W Line of Section  
 GPS Location: Lat: \_\_\_\_\_, Long: \_\_\_\_\_  
(e.g. xx.xxxxx) (e.g. -xxx.xxxxx)  
 Datum:  NAD27  NAD83  WGS84  
 County: \_\_\_\_\_ Elevation: \_\_\_\_\_  GL  KB  
 Lease Name: \_\_\_\_\_ Well #: \_\_\_\_\_  
 Well Type: (check one)  Oil  Gas  OG  WSW  Other: \_\_\_\_\_  
 SWD Permit #: \_\_\_\_\_  ENHR Permit #: \_\_\_\_\_  
 Gas Storage Permit #: \_\_\_\_\_  
 Spud Date: \_\_\_\_\_ Date Shut-In: \_\_\_\_\_

	Conductor	Surface	Production	Intermediate	Liner	Tubing
Size						
Setting Depth						
Amount of Cement						
Top of Cement						
Bottom of Cement						

Casing Fluid Level from Surface: \_\_\_\_\_ How Determined? \_\_\_\_\_ Date: \_\_\_\_\_  
 Casing Squeeze(s): \_\_\_\_\_ to \_\_\_\_\_ w / \_\_\_\_\_ sacks of cement, \_\_\_\_\_ to \_\_\_\_\_ w / \_\_\_\_\_ sacks of cement. Date: \_\_\_\_\_  
(top) (bottom) (top) (bottom)  
 Do you have a valid Oil & Gas Lease?  Yes  No  
 Depth and Type:  Junk in Hole at \_\_\_\_\_  Tools in Hole at \_\_\_\_\_ Casing Leaks:  Yes  No Depth of casing leak(s): \_\_\_\_\_  
(depth) (depth)  
 Type Completion:  ALT. I  ALT. II Depth of:  DV Tool: \_\_\_\_\_ w / \_\_\_\_\_ sacks of cement  Port Collar: \_\_\_\_\_ w / \_\_\_\_\_ sack of cement  
(depth) (depth)  
 Packer Type: \_\_\_\_\_ Size: \_\_\_\_\_ Inch Set at: \_\_\_\_\_ Feet  
 Total Depth: \_\_\_\_\_ Plug Back Depth: \_\_\_\_\_ Plug Back Method: \_\_\_\_\_

**Geological Data:**

Formation Name	Formation Top	Formation Base	Completion Information
1. _____	At: _____	to _____ Feet	Perforation Interval _____ to _____ Feet or Open Hole Interval _____ to _____ Feet
2. _____	At: _____	to _____ Feet	Perforation Interval _____ to _____ Feet or Open Hole Interval _____ to _____ Feet

UNDER PENALTY OF PERJURY I HEREBY ATTEST THAT THE INFORMATION CONTAINED HEREIN IS TRUE AND CORRECT TO THE BEST OF MY KNOWLEDGE

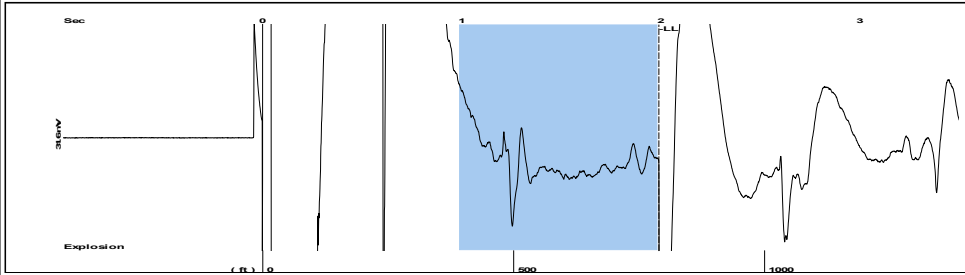
Submitted Electronically

<b>Do NOT Write in This Space - KCC USE ONLY</b>	Date Tested: _____	Results: _____	Date Plugged: _____	Date Repaired: _____	Date Put Back in Service: _____
	Review Completed by: _____ Comments: _____				
TA Approved: <input type="checkbox"/> Yes <input type="checkbox"/> Denied Date: _____					

Mail to the Appropriate KCC Conservation Office:

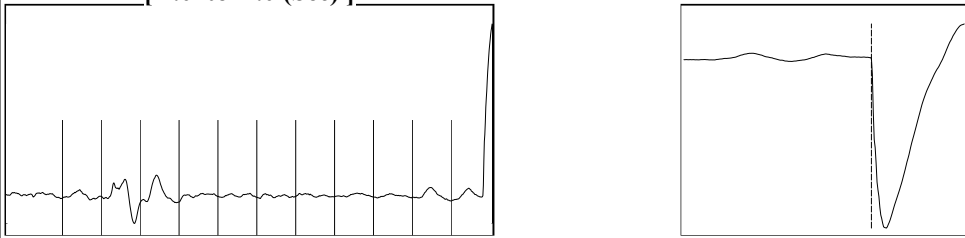
	KCC District Office #1 - 210 E. Frontview, Suite A, Dodge City, KS 67801	Phone 620.682.7933
	KCC District Office #2 - 3450 N. Rock Road, Building 600, Suite 601, Wichita, KS 67226	Phone 316.337.7400
	KCC District Office #3 - 137 E. 21st St., Chanute, KS 66720	Phone 620.902.6450
	KCC District Office #4 - 2301 E. 13th Street, Hays, KS 67601-2651	Phone 785.261.6250

Group: MyWells Well: Porter D 80 (acquired on: 04/06/21 15:43:34 )



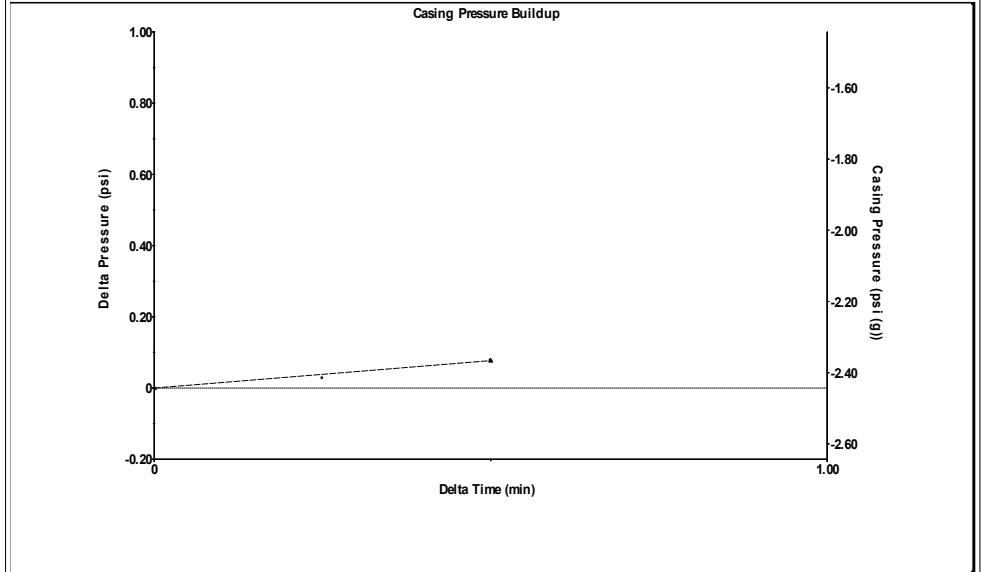
Filter Type High Pass Automatic Collar Count Yes Time 1.989 sec  
 Manual Acoustic Veloc 793.492 ft/s Manual JTS/sec 12.5156 Joints 24.8936 Jts  
 Depth 789.13 ft

[ 1.0 to 2.0 (Sec) ]



**Analysis Method: Automatic**

Group: MyWells Well: Porter D 80 (acquired on: 04/06/21 15:43:34 )

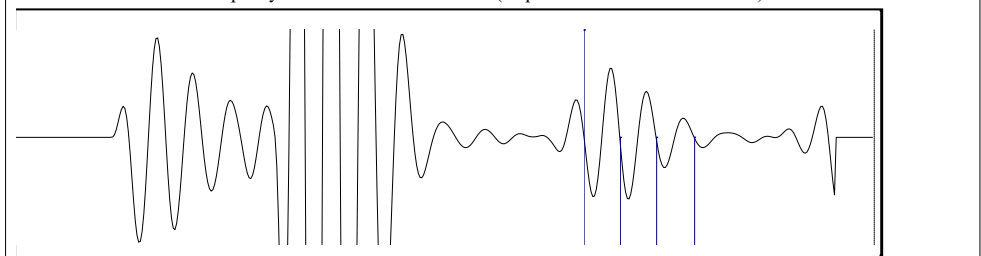


Change in Pressure 0.08 psi PT 12849  
 Change in Time 0.50 min Range 0 - ? psi

Group: MyWells Well: Porter D 80 (acquired on: 04/06/21 15:43:34 )

<p><b>Production</b></p> <p>Current Potential</p> <p>Oil - * - 0.0 BBL/D</p> <p>Water - * - 0.0 BBL/D</p> <p>Gas - * - 0.0 Mscf/D</p> <p>IPR Method Vogel</p> <p>PBHP/SBHP 0.60</p> <p>Production Efficiency 58.7</p> <p>Oil 35 deg.API</p> <p>Water 1.05 Sp.Gr.H2O</p> <p>Gas 1.16 Sp.Gr.AIR</p> <p>Acoustic Velocity 793.492 ft/s</p> <p>Formation Submergence</p> <p>Total Gaseous Liquid Column HT (TVD) 1307 ft</p> <p>Equivalent Gas Free Liquid HT (TVD) 1251 ft</p> <p>Acoustic Test</p>		<p><b>Producing</b></p> <p>Casing Pressure -2.4 psi (g)</p> <p>Casing Pressure Buildup 0.077 psi</p> <p>0.50 min</p> <p>Gas/Liquid Interface Pressure -2.0 psi (g)</p> <p>Liquid Level Depth 789.13 ft</p> <p>Tubing Intake Depth 2096.00 ft</p> <p>Formation Depth 1996.00 ft</p> <p>Tubing Intake 567.5 psi (g)</p> <p>Producing BHP 522.0 psi (g)</p> <p>Static BHP 874.1 psi (g)</p> <p>Annular Gas Flow 2 Mscf/D</p> <p>% Liquid 95 %</p>
--	--	--

Group: MyWells Well: Porter D 80 (acquired on: 04/06/21 15:43:34 )



Acoustic Velocity - \* - ft/s Joints counted 3  
 Joints Per Second - \* - jts/sec Joints to liquid level - \* -  
 Depth to liquid level - \* - ft Filter Width 10.5156 14.5156  
 Automatic Collar Count Yes Time to 1st Collar - \* - - \* -

Conservation Division  
District Office No. 2  
3450 N. Rock Road  
Building 600, Suite 601  
Wichita, KS 67226



Phone: 316-337-7400  
Fax: 316-630-4005  
<http://kcc.ks.gov/>

Andrew J. French, Chairperson  
Dwight D. Keen, Commissioner  
Susan K. Duffy, Commissioner

Laura Kelly, Governor

April 28, 2021

Casey Coats  
Vess Oil Corporation  
1700 WATERFRONT PKWY BLDG 500  
WICHITA, KS 67206-6619

Re: Temporary Abandonment  
API 15-015-23233-00-00  
PORTER D 80  
NW/4 Sec.01-26S-04E  
Butler County, Kansas

Dear Casey Coats:

"Your temporary abandonment (TA) application for the well listed above has been approved. In accordance with K.A.R. 82-3-111 the TA status of this well will expire 04/28/2022.

- \* If you return this well to service or plug it, please notify the District Office.
- \* If you sell this well you are required to file a Transfer of Operator form, T-1.
- \* If the well will remain temporarily abandoned, you must submit a new TA application, CP-111, before 04/28/2022.

You may contact me at the number above if you have questions.

Very truly yours,

Neal Rupp ECRS"