

KANSAS CORPORATION COMMISSION
OIL & GAS CONSERVATION DIVISION

TEMPORARY ABANDONMENT WELL APPLICATION

OPERATOR: License#
Name:
Address 1:
Address 2:
City: State: Zip:
Contact Person:
Phone:
Contact Person Email:
Field Contact Person:
Field Contact Person Phone:

API No. 15-
Spot Description:
Sec. Twp. S. R.
GPS Location: Lat, Long
Datum: NAD27, NAD83, WGS84
County: Elevation:
Lease Name: Well #:
Well Type: Oil, Gas, OG, WSW, Other
SWD Permit #: ENHR Permit #:
Gas Storage Permit #:
Spud Date: Date Shut-In:

Table with 7 columns: Conductor, Surface, Production, Intermediate, Liner, Tubing. Rows include Size, Setting Depth, Amount of Cement, Top of Cement, Bottom of Cement.

Casing Fluid Level from Surface: How Determined? Date:
Casing Squeeze(s): to w / sacks of cement, to w / sacks of cement. Date:
Do you have a valid Oil & Gas Lease? Yes No
Depth and Type: Junk in Hole at Tools in Hole at Casing Leaks: Yes No Depth of casing leak(s):
Type Completion: ALT. I ALT. II Depth of: DV Tool: w / sacks of cement Port Collar: w / sack of cement
Packer Type: Size: Inch Set at: Feet
Total Depth: Plug Back Depth: Plug Back Method:

Geological Date:

Table with 4 columns: Formation Name, Formation Top, Formation Base, Completion Information. Rows 1 and 2.

UNDER PENALTY OF PERJURY I HEREBY ATTEST THAT THE INFORMATION CONTAINED HEREIN IS TRUE AND CORRECT TO THE BEST OF MY KNOWLEDGE

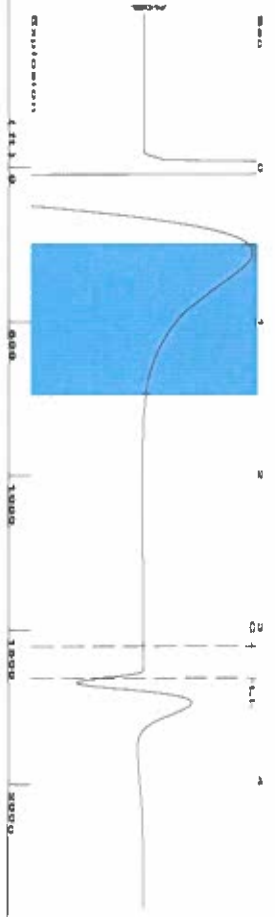
Submitted Electronically

Form with fields: Do NOT Write in This Space - KCC USE ONLY, Date Tested, Results, Date Plugged, Date Repaired, Date Put Back in Service, Review Completed by, Comments, TA Approved: Yes Denied, Date.

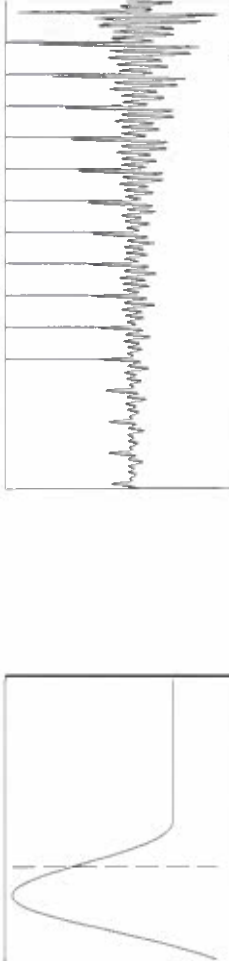
Mail to the Appropriate KCC Conservation Office:

Table with 2 columns: Office Address, Phone. Rows for KCC District Office #1, #2, #3, #4.

Group: Liberal Wells Well: Federal Farm Mortgage B-1 (acquired on: 05/01/21 10:51:08 )



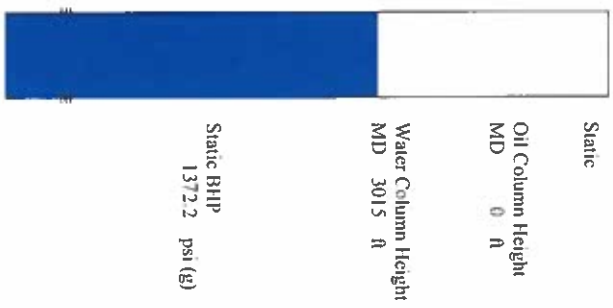
Filter Type High Pass Automatic Collar Count Yes  
 Manual Acoustic Velocity 978.395 ft/s Manual JTS/sec 15.4321  
 Time 3.333 sec  
 Joints 52.2336 Jts  
 Depth 1655.80 ft



**Analysis Method: Automatic**

Group: Liberal Wells Well: Federal Farm Mortgage B-1 (acquired on: 05/01/21 10:51:08 )

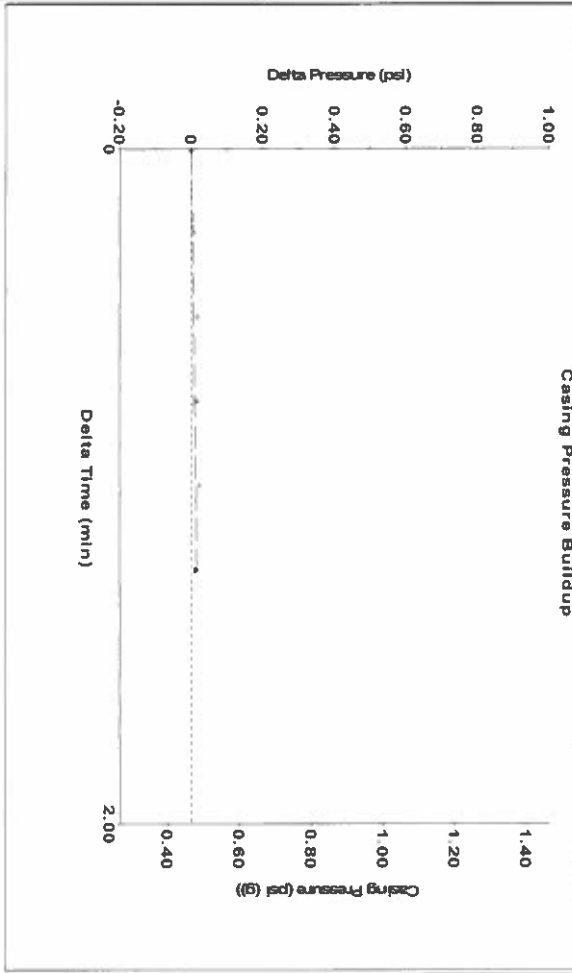
Production	Potential	Casing Pressure	Static
Current	BBL/D	0.5 psi (g)	Oil Column Height
Oil 0	BBL/D	Casing Pressure Buildup	MD 0 ft
Water 0	MscFD	0.015 psi	Water Column Height
Gas 0.0		1.25 min	MD 3015 ft
IPR Method	Vogel	Gas/Liquid Interface Pressure	
PBHP/SBHP	0.0	1.3 psi (g)	
Production Efficiency		Liquid Level Depth	
Oil 40 deg API		1655.80 ft	
Water 1.05 Sp.Gr H2O		Pump Intake Depth	
Gas 0.97 Sp.Gr AIR		Formation Depth	
Acoustic Velocity		993.582 ft/s	Static BHP
			1372.2 psi (g)



Group: Liberal Wells Well: Federal Farm Mortgage B-1 (acquired on: 05/01/21 10:51:08 )

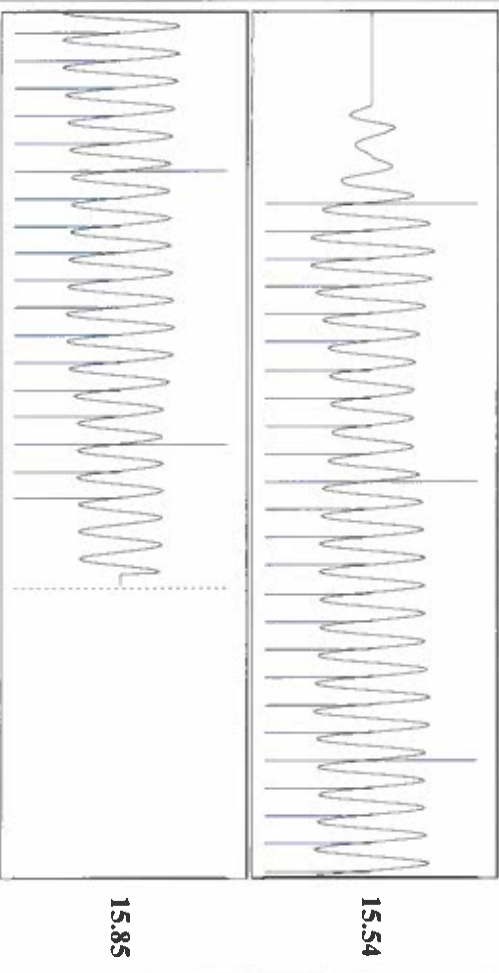
**Shot @ 300psi BP**

**Casing Pressure Buildup**



Change in Pressure 0.01 psi PT1249  
 Change in Time 1.25 min Range 0 - ? psi

Group: Liberal Wells Well: Federal Farm Mortgage B-1 (acquired on: 05/01/21 10:51:08 )



Acoustic Velocity 993.582 ft/s Joints counted 42  
 Joints Per Second 15.6716 Jts/sec Joints to liquid level 52.2336  
 Depth to liquid level 1655.8 ft Filter Width 13.4321  
 Automatic Collar Count Yes Time to 1st Collar 0.444 3.124

May 04, 2021

Katherine McClurkan  
Merit Energy Company, LLC  
13727 Noel Road, Suite 1200  
DALLAS, TX 75240-7362

Re: Temporary Abandonment  
API 15-175-21837-00-00  
Federal Farm Mortgage B 1  
SE/4 Sec.27-31S-34W  
Seward County, Kansas

Dear Katherine McClurkan:

"Your temporary abandonment (TA) application for the well listed above has been approved. In accordance with K.A.R. 82-3-111 the TA status of this well will expire 05/04/2022.

- \* If you return this well to service or plug it, please notify the District Office.
- \* If you sell this well you are required to file a Transfer of Operator form, T-1.
- \* If the well will remain temporarily abandoned, you must submit a new TA application, CP-111, before 05/04/2022.

You may contact me at the number above if you have questions.

Very truly yours,

Michael Maier"