

KANSAS CORPORATION COMMISSION
OIL & GAS CONSERVATION DIVISION

TEMPORARY ABANDONMENT WELL APPLICATION

OPERATOR: License#
Name:
Address 1:
Address 2:
City: State: Zip:
Contact Person:
Phone:
Contact Person Email:
Field Contact Person:
Field Contact Person Phone:

API No. 15-
Spot Description:
Sec. Twp. S. R.
GPS Location: Lat: Long:
Datum: NAD27 NAD83 WGS84
County: Elevation:
Lease Name: Well #:
Well Type: Oil Gas OG WSW Other:
SWD Permit #: ENHR Permit #:
Gas Storage Permit #:
Spud Date: Date Shut-In:

Table with 7 columns: Conductor, Surface, Production, Intermediate, Liner, Tubing. Rows include Size, Setting Depth, Amount of Cement, Top of Cement, Bottom of Cement.

Casing Fluid Level from Surface: How Determined? Date:
Casing Squeeze(s): to w / sacks of cement, to w / sacks of cement. Date:
Do you have a valid Oil & Gas Lease? Yes No
Depth and Type: Junk in Hole at Tools in Hole at Casing Leaks: Yes No Depth of casing leak(s):
Type Completion: ALT. I ALT. II Depth of: DV Tool: w / sacks of cement Port Collar: w / sack of cement
Packer Type: Size: Inch Set at: Feet
Total Depth: Plug Back Depth: Plug Back Method:

Geological Data:

Table with 4 columns: Formation Name, Formation Top, Formation Base, Completion Information. Rows 1 and 2.

UNDER PENALTY OF PERJURY I HEREBY ATTEST THAT THE INFORMATION CONTAINED HEREIN IS TRUE AND CORRECT TO THE BEST OF MY KNOWLEDGE

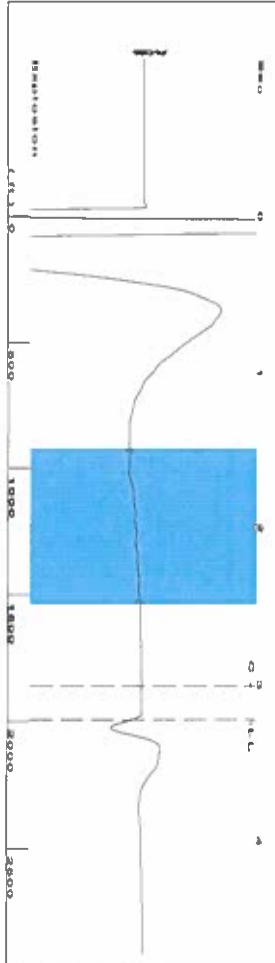
Submitted Electronically

Do NOT Write in This Space - KCC USE ONLY
Date Tested: Results: Date Plugged: Date Repaired: Date Put Back in Service:
Review Completed by: Comments:
TA Approved: Yes Denied Date:

Mail to the Appropriate KCC Conservation Office:

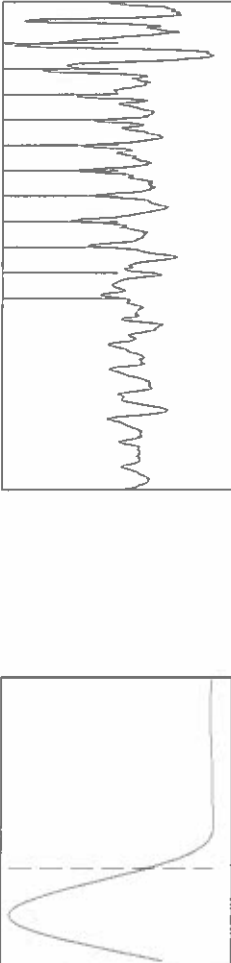
Table with 3 columns: District Office #, Address, Phone. Rows 1-4.

Group: Liberal Wells Well: Ridenour A-1 (acquired on: 05/01/21 11:08:27)



Filter Type High Pass Automatic Collar Count Yes
 Manual Acoustic Velocity 1209.92 N/s Manual JTS/sec 19.084
 Time 3.231 sec
 Joints 62.8706 Jts
 Depth 1993.00 ft

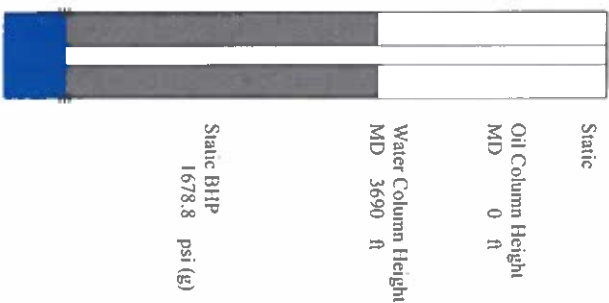
1.5 to 2.5 (Sec) |



Analysis Method: Automatic

Group: Liberal Wells Well: Ridenour A-1 (acquired on: 05/01/21 11:08:27)

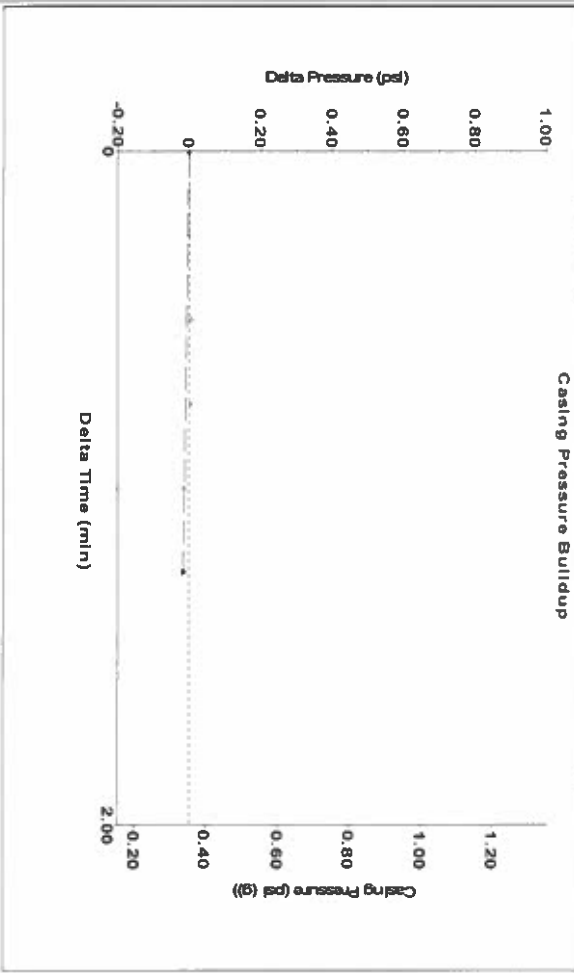
Production Current	Potential	Casing Pressure	Static
Oil ***	BB/L/D	0.4 psi (g)	Oil Column Height
Water **	BB/L/D	Casing Pressure Buildup	MD 0 ft
Gas **	Misc/D	-0.016 psi	Water Column Height
		1.25 min	MD 3690 ft
		Gas/Liquid Interface Pressure	
		1.2 psi (g)	
IPR Method	Vogel	Liquid Level Depth	
PBHP/SBHP	**	1993.00 ft	
Production Efficiency	0.0	Pump Intake Depth	
		5683.00 ft	
Oil 40 deg API		Formation Depth	
Water 1.05 Sp.Gr.H2O		5694.00 ft	
Gas 0.74 Sp.Gr.AIR			
Acoustic Velocity	1233.67 N/s		



Acoustic Test

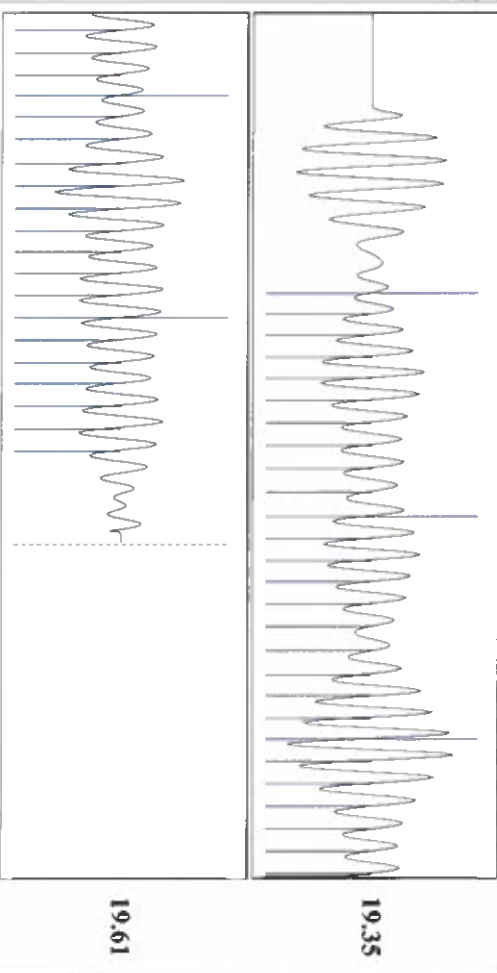
Group: Liberal Wells Well: Ridenour A-1 (acquired on: 05/01/21 11:08:27)

Shot @ 300 psi BP



Change in Pressure -0.02 psi PTT1249
 Change in Time 1.25 min Range

Group: Liberal Wells Well: Ridenour A-1 (acquired on: 05/01/21 11:08:27)



Conservation Division
District Office No. 1
210 E. Frontview, Suite A
Dodge City, KS 67801



Phone: 620-682-7933
<http://kcc.ks.gov/>

Andrew J. French, Chairperson
Dwight D. Keen, Commissioner
Susan K. Duffy, Commissioner

Laura Kelly, Governor

May 04, 2021

Katherine McClurkan
Merit Energy Company, LLC
13727 Noel Road, Suite 1200
DALLAS, TX 75240-7362

Re: Temporary Abandonment
API 15-175-21818-00-01
Ridenour A 1
SW/4 Sec.27-31S-34W
Seward County, Kansas

Dear Katherine McClurkan:

"Your temporary abandonment (TA) application for the well listed above has been approved. In accordance with K.A.R. 82-3-111 the TA status of this well will expire 05/04/2022.

- * If you return this well to service or plug it, please notify the District Office.
- * If you sell this well you are required to file a Transfer of Operator form, T-1.
- * If the well will remain temporarily abandoned, you must submit a new TA application, CP-111, before 05/04/2022.

You may contact me at the number above if you have questions.

Very truly yours,

Michael Maier"