

KANSAS CORPORATION COMMISSION
OIL & GAS CONSERVATION DIVISION

TEMPORARY ABANDONMENT WELL APPLICATION

OPERATOR: License#
Name:
Address 1:
Address 2:
City: State: Zip:
Contact Person:
Phone:
Contact Person Email:
Field Contact Person:
Field Contact Person Phone:

API No. 15-
Spot Description:
Sec. Twp. S. R.
GPS Location: Lat, Long
Datum: NAD27, NAD83, WGS84
County: Elevation:
Lease Name: Well #:
Well Type: Oil, Gas, OG, WSW, Other
SWD Permit #: ENHR Permit #:
Gas Storage Permit #:
Spud Date: Date Shut-In:

Table with 7 columns: Conductor, Surface, Production, Intermediate, Liner, Tubing. Rows include Size, Setting Depth, Amount of Cement, Top of Cement, Bottom of Cement.

Casing Fluid Level from Surface: How Determined? Date:
Casing Squeeze(s): to w / sacks of cement, to w / sacks of cement. Date:
Do you have a valid Oil & Gas Lease? Yes No
Depth and Type: Junk in Hole at Tools in Hole at Casing Leaks: Yes No Depth of casing leak(s):
Type Completion: ALT. I ALT. II Depth of: DV Tool: w / sacks of cement Port Collar: w / sack of cement
Packer Type: Size: Inch Set at: Feet
Total Depth: Plug Back Depth: Plug Back Method:

Geological Data:

Table with 4 columns: Formation Name, Formation Top, Formation Base, Completion Information. Rows 1 and 2.

UNDER PENALTY OF PERJURY I HEREBY ATTEST THAT THE INFORMATION CONTAINED HEREIN IS TRUE AND CORRECT TO THE BEST OF MY KNOWLEDGE

Submitted Electronically

Do NOT Write in This Space - KCC USE ONLY
Date Tested: Results: Date Plugged: Date Repaired: Date Put Back in Service:
Review Completed by: Comments:
TA Approved: Yes Denied Date:

Mail to the Appropriate KCC Conservation Office:

Table with 3 columns: District Office #, Address, Phone. Rows 1-4.

Liquid Level

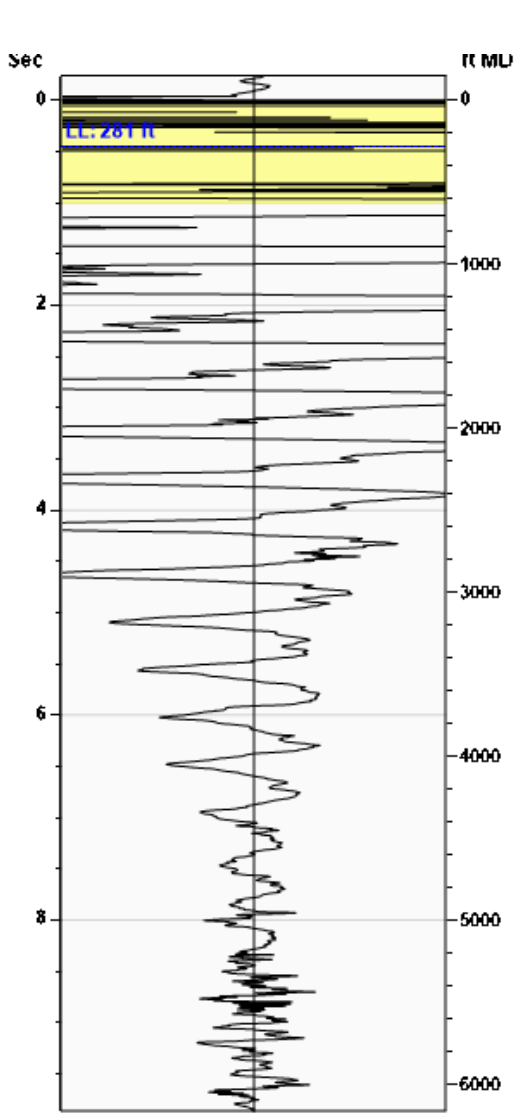
281 ft MD

Fluid Above Pump

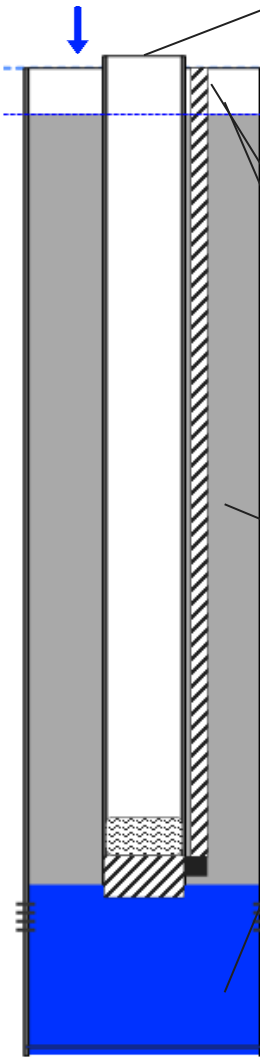
4773 ft TVD

Equivalent Gas Free Above Pump

4773 ft TVD



Gun - WG 1549



Production

Date Entered	03/31/21		
	Current	Potential	
Oil	**	**	BBL/D
Water	**	**	BBL/D
Gas	**	**	Mscf/D
IPR Method	Vogel		
PBHP/SBHP	-0.00		
Producing Efficiency	0.00%		

Casing Pressure

Pressure	6.0 psi (g)
----------	-------------

Annular Gas Flow

Gas Flow	0.2 Mscf/D
----------	------------

Fluid Properties

% Liquid Above Pump	100.00%
% Liquid Below Pump	100.00%

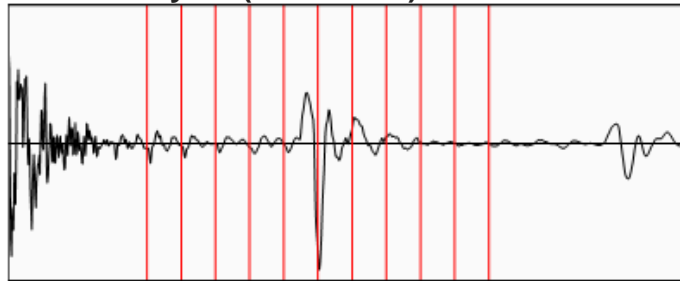
Depths

Pump Intake Depth	5054 ft
Formation Depth	5304 ft

Wellbore Pressures

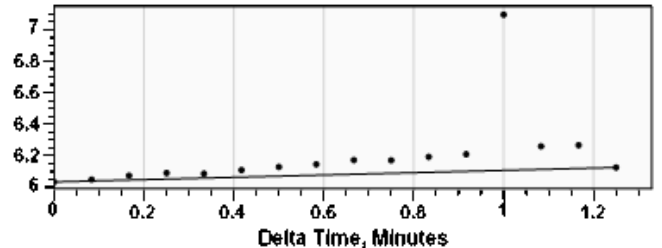
PIP	1544.6 psi (g)
PBHP	1668.3 psi (g)
SBHP	**
Gas/Liq Interface	6.2 psi (g)

Collar Analysis (Automatic)



Average Acoustic Velocity	1250 ft/s
Average Joints Per Sec.	19.84 Jts/sec
Joints To Liquid	8.91 Jts

Casing Pressure Buildup



Casing Pressure	6.0 psi (g)
Buildup	0.1 psi (g)
Buildup Time	1 min 15 sec
Gas Gravity from Collar Analysis (Automatic)	0.7203 Air = 1

Comments and Recommendations

Echometer Company
 5001 Ditto Lane
 Wichita Falls, TX 76302
 (940) 767-4334
 info@echometer.com

Conservation Division
District Office No. 1
210 E. Frontview, Suite A
Dodge City, KS 67801



Phone: 620-682-7933
<http://kcc.ks.gov/>

Andrew J. French, Chairperson
Dwight D. Keen, Commissioner
Susan K. Duffy, Commissioner

Laura Kelly, Governor

May 04, 2021

PENNY PLUMLEE
Urban Oil and Gas Group LLC
1000 E 14TH ST SUITE 300
PLANO, TX 75074-6214

Re: Temporary Abandonment
API 15-119-20885-00-02
NOVINGER SOUTH 2
NE/4 Sec.02-34S-30W
Meade County, Kansas

Dear PENNY PLUMLEE:

Your application for Temporary Abandonment (TA) for the above-listed well is denied for the following reasons(s):

High Fluid Level

Pursuant to K.A.R. 82-3-111, the well must be plugged, or returned to service, or obtain temporary abandonment status by 06/03/2021.

This deadline does NOT override any compliance deadline given to you in any Commission Order.

You may contact me if you have any questions.

Sincerely,
Michael Maier
KCC DISTRICT 1