

KANSAS CORPORATION COMMISSION
OIL & GAS CONSERVATION DIVISION

TEMPORARY ABANDONMENT WELL APPLICATION

OPERATOR: License#
Name:
Address 1:
Address 2:
City: State: Zip:
Contact Person:
Phone:
Contact Person Email:
Field Contact Person:
Field Contact Person Phone:

API No. 15-
Spot Description:
Sec. Twp. S. R.
GPS Location: Lat: Long:
Datum: NAD27 NAD83 WGS84
County: Elevation:
Lease Name: Well #:
Well Type: Oil Gas OG WSW Other:
SWD Permit #: ENHR Permit #:
Gas Storage Permit #:
Spud Date: Date Shut-In:

Table with 7 columns: Conductor, Surface, Production, Intermediate, Liner, Tubing. Rows include Size, Setting Depth, Amount of Cement, Top of Cement, Bottom of Cement.

Casing Fluid Level from Surface: How Determined? Date:
Casing Squeeze(s): to w / sacks of cement, to w / sacks of cement. Date:
Do you have a valid Oil & Gas Lease? Yes No
Depth and Type: Junk in Hole at Tools in Hole at Casing Leaks: Yes No Depth of casing leak(s):
Type Completion: ALT. I ALT. II Depth of: DV Tool: w / sacks of cement Port Collar: w / sack of cement
Packer Type: Size: Inch Set at: Feet
Total Depth: Plug Back Depth: Plug Back Method:

Geological Date:

Table with 4 columns: Formation Name, Formation Top, Formation Base, Completion Information. Rows 1 and 2.

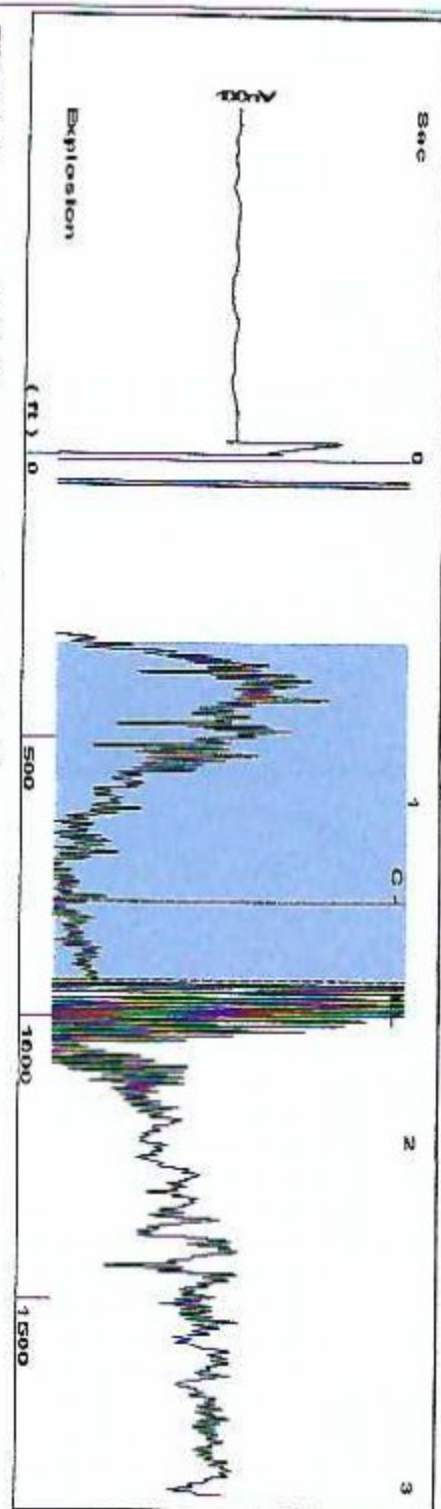
UNDER PENALTY OF PERJURY I HEREBY ATTEST THAT THE INFORMATION CONTAINED HEREIN IS TRUE AND CORRECT TO THE BEST OF MY KNOWLEDGE

Submitted Electronically

Do NOT Write in This Space - KCC USE ONLY
Date Tested: Results: Date Plugged: Date Repaired: Date Put Back in Service:
Review Completed by: Comments:
TA Approved: Yes Denied Date:

Mail to the Appropriate KCC Conservation Office:

Table with 3 columns: District Office, Address, Phone. Rows for District Office #1, #2, #3, #4.



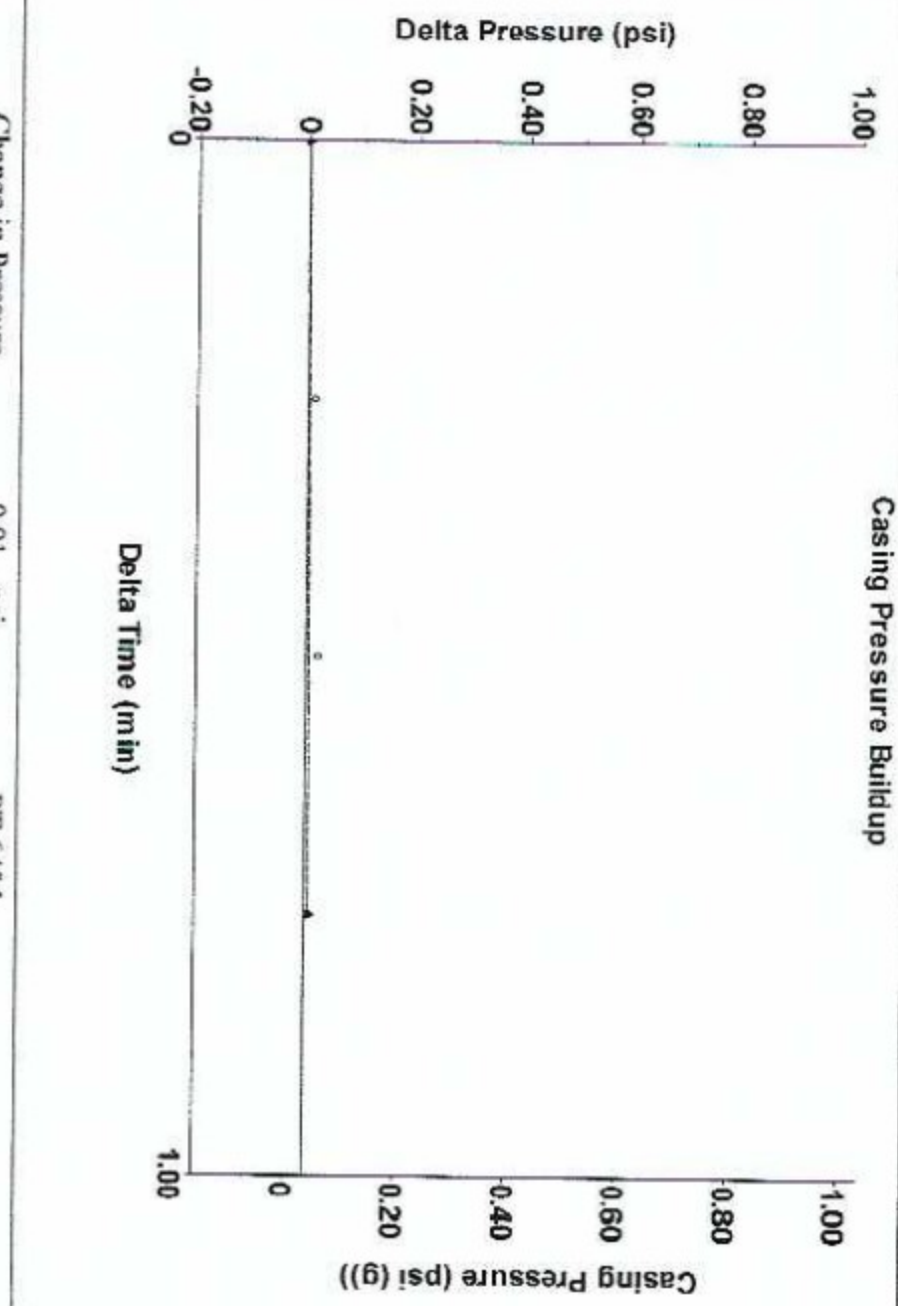
Filter Type High Pass  
 Manual Acoustic Velo 1200.76 ft/s  
 Automatic Collar Count Yes  
 Manual JTS/sec 18.9394  
 Time 1.53 sec  
 Joints 29.4231 Jts  
 Depth 932.71 ft



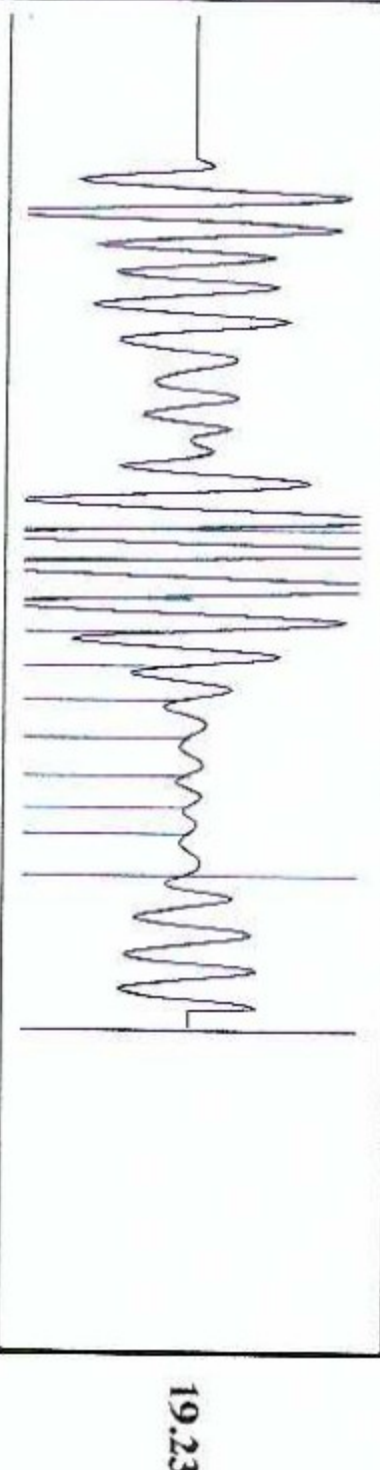
**Analysis Method: Automatic**

Group: GLM Well: Luerman #5 (acquired on: 05/06/21 09:51:58)

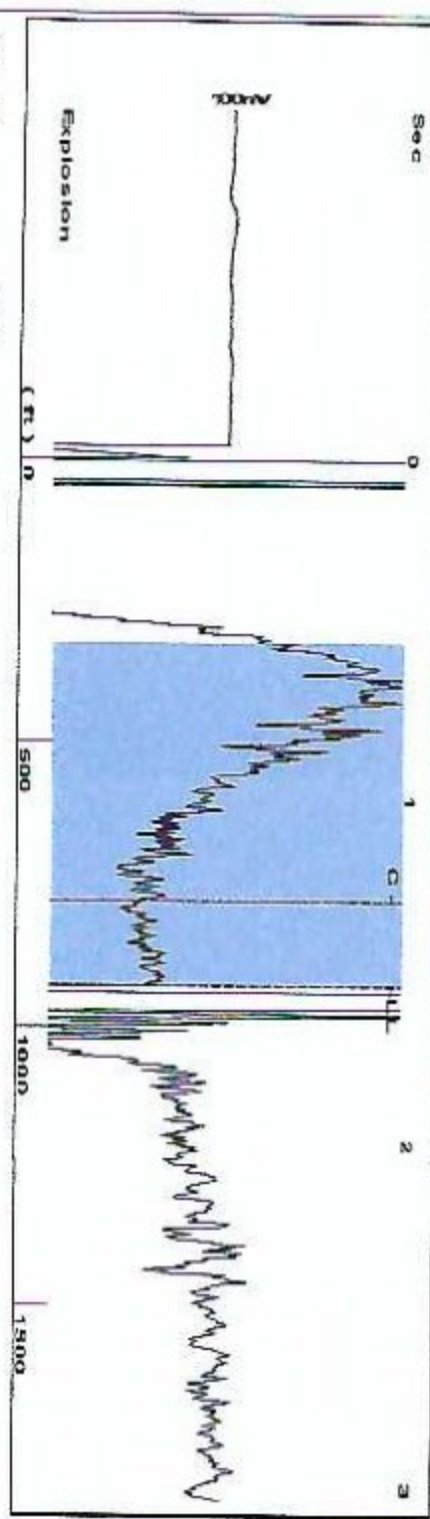
Production Current	Potential	Casing Pressure	Producing
Oil - * -	0.0 BBL/D	0.0 psi (g)	Annular Gas Flow - * - MscFD
Water - * -	0.0 BBL/D	Casing Pressure Buildup 0.0 psi	% Liquid 100 %
Gas - * -	0.0 MscFD	0.75 min Gas/Liquid Interface Pressure 0.4 psi (g)	
IPR Method PBHP/SB/IP	Vogel 1.00	Liquid Level Depth 932.71 ft	Pump Intake - * - psi (g)
Production Efficiency	0.5	Pump Intake Depth - * - ft	Producing BHP 1076.2 psi (g)
Oil 40 deg API		Formation Depth 3299.00 ft	Static BHP 1079.3 psi (g)
Water 1.05 Sp.Gr.H2O			
Gas 0.76 Sp.Gr.AIR			
Acoustic Velocity 1219.23 ft/s			
Formation Submergence			
Total Gaseous Liquid Column HT (TVD) 2366 ft			
Equivalent Gas Free Liquid HT (TVD) 2366 ft			
Acoustic Test			



Change in Pressure 0.01 psi  
 Change in Time 0.75 min  
 PT 6454 Range  
 0 - ? psi



Acoustic Velocity	1219.23 ft/s	Joints counted	10
Joints Per Second	19.2308 Jts/sec	Joints to liquid level	29.4231
Depth to liquid level	932.712 ft	Filter Width	16.9394
Automatic Collar Count	Yes	Time to 1st Collar	0.772

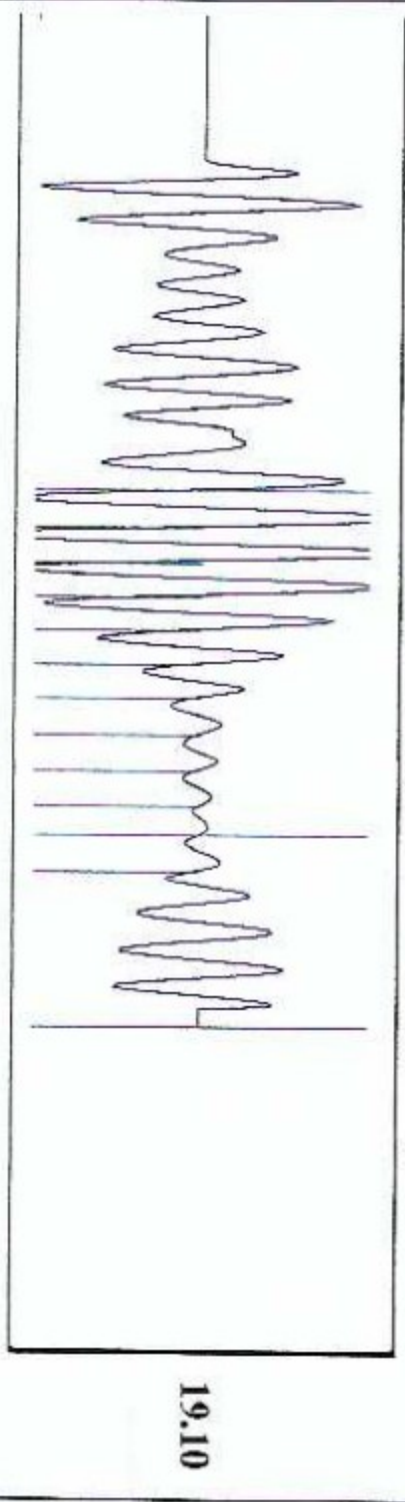
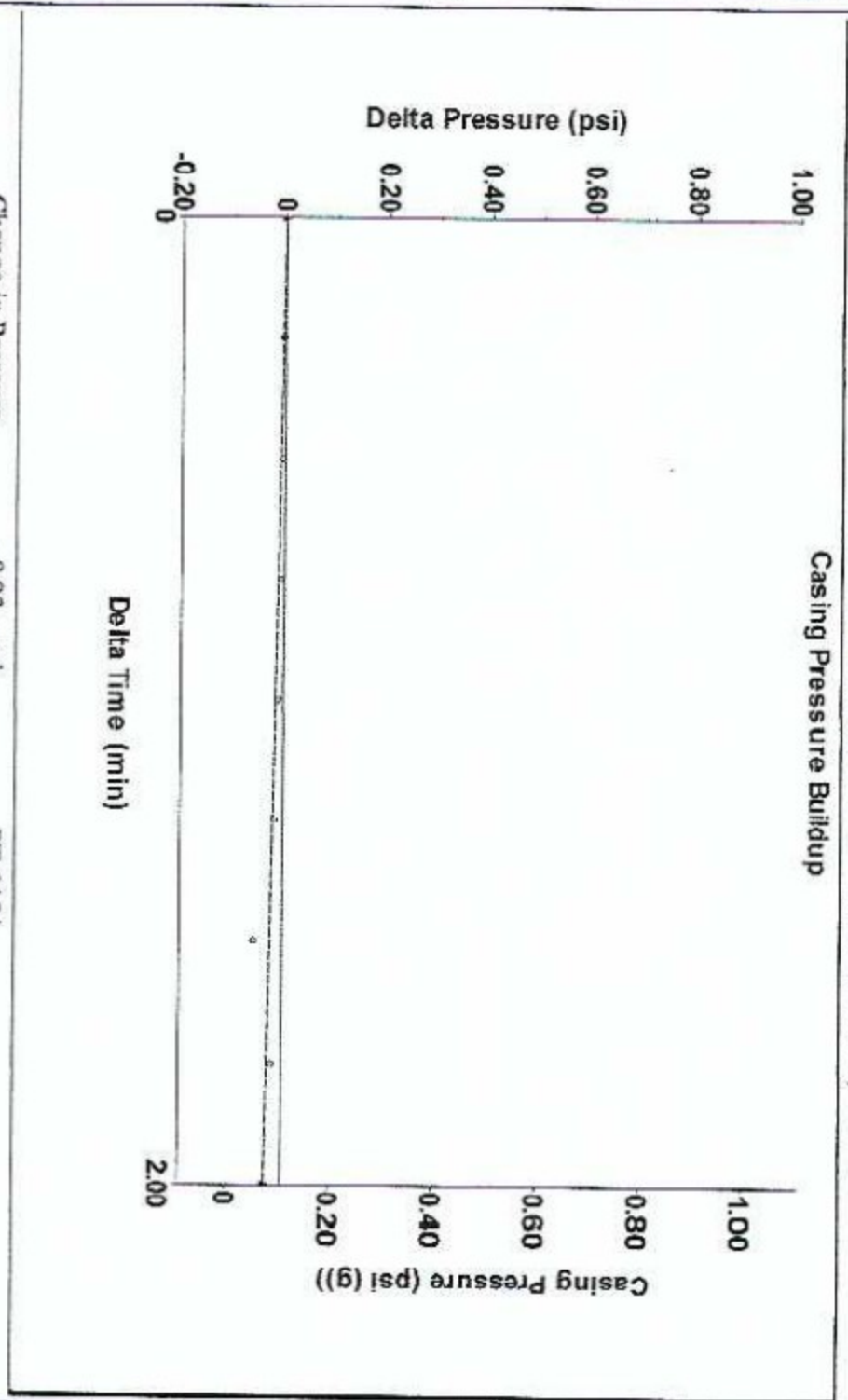
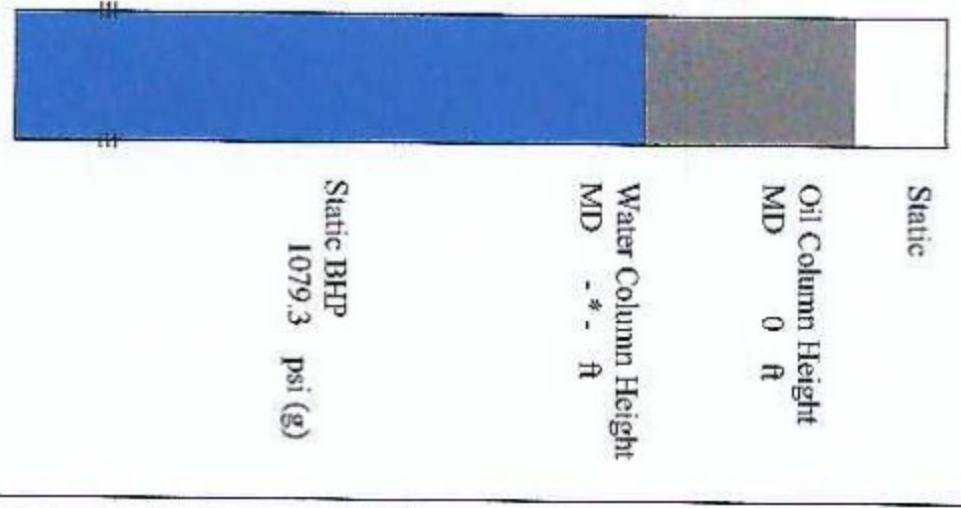


Filter Type High Pass Automatic Collar Count Yes  
 Manual Acoustic Velo 1200.76 ft/s Manual JTS/sec 18.9394  
 Time 1.53 sec  
 Joints 29.2188 Jts  
 Depth 926.23 ft



Analysis Method: Automatic

<b>Production</b>	<b>Potential</b>	<b>Casing Pressure</b>	<b>Static</b>
Current	-* - BBL/D	0.1 psi (g)	Oil Column Height
Oil	-* - BBL/D	Casing Pressure Buildup	MD 0 ft
Water	-* - Misc/D	-0.0 psi	Water Column Height
Gas	-* - Misc/D	2.00 min	MD -* - ft
IPR Method	Vogel	Gas/Liquid Interface Pressure	
PBHP/SBHP	-* -	0.5 psi (g)	
Production Efficiency	0.0	Liquid Level Depth	
Oil	40 deg API	926.23 ft	
Water	1.05 Sp.Gr.H2O	Pump Intake Depth	
Gas	0.77 Sp.Gr.AIR	-* - ft	
Acoustic Velocity	1210.76 ft/s	Formation Depth	
		3299.00 ft	



Acoustic Velocity	1210.76 ft/s	Joints counted	11
Joints Per Second	19.0972 Jts/sec	Joints to liquid level	29.2188
Depth to liquid level	926.234 ft	Filter Width	16.9394
Automatic Collar Count	Yes	Time to 1st Collar	0.716

Conservation Division  
District Office No. 4  
2301 E. 13th Street  
Hays, KS 67601-2651



Phone: 785-261-6250  
Fax: 785-625-0564  
<http://kcc.ks.gov/>

Andrew J. French, Chairperson  
Dwight D. Keen, Commissioner  
Susan K. Duffy, Commissioner

Laura Kelly, Governor

May 10, 2021

Terry E. Morris  
Morris, Terry E. dba G L M Company  
PO BOX 193  
RUSSELL, KS 67665-0193

Re: Temporary Abandonment  
API 15-167-20570-00-00  
LUERMAN 5  
NE/4 Sec.19-15S-12W  
Russell County, Kansas

Dear Terry E. Morris:

"Your temporary abandonment (TA) application for the well listed above has been approved. In accordance with K.A.R. 82-3-111 the TA status of this well will expire 05/10/2022.

- \* If you return this well to service or plug it, please notify the District Office.
- \* If you sell this well you are required to file a Transfer of Operator form, T-1.
- \* If the well will remain temporarily abandoned, you must submit a new TA application, CP-111, before 05/10/2022.

You may contact me at the number above if you have questions.

Very truly yours,

RICHARD WILLIAMS"