

KANSAS CORPORATION COMMISSION
OIL & GAS CONSERVATION DIVISION

TEMPORARY ABANDONMENT WELL APPLICATION

OPERATOR: License#
Name:
Address 1:
Address 2:
City: State: Zip:
Contact Person:
Phone:
Contact Person Email:
Field Contact Person:
Field Contact Person Phone:

API No. 15-
Spot Description:
Sec. Twp. S. R.
feet from N / S Line of Section
feet from E / W Line of Section
GPS Location: Lat: , Long:
Datum: NAD27 NAD83 WGS84
County: Elevation: GL KB
Lease Name: Well #:
Well Type: (check one) Oil Gas OG WSW Other:
SWD Permit #: ENHR Permit #:
Gas Storage Permit #:
Spud Date: Date Shut-In:

Table with 7 columns: Conductor, Surface, Production, Intermediate, Liner, Tubing. Rows include Size, Setting Depth, Amount of Cement, Top of Cement, Bottom of Cement.

Casing Fluid Level from Surface: How Determined? Date:
Casing Squeeze(s): to w / sacks of cement, to w / sacks of cement. Date:
Do you have a valid Oil & Gas Lease? Yes No
Depth and Type: Junk in Hole at Tools in Hole at Casing Leaks: Yes No Depth of casing leak(s):
Type Completion: ALT. I ALT. II Depth of: DV Tool: w / sacks of cement Port Collar: w / sack of cement
Packer Type: Size: Inch Set at: Feet
Total Depth: Plug Back Depth: Plug Back Method:

Geological Date:

Table with 4 columns: Formation Name, Formation Top, Formation Base, Completion Information. Rows 1 and 2.

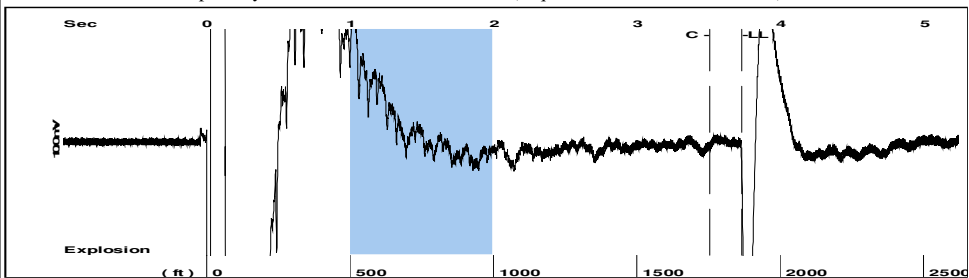
UNDER PENALTY OF PERJURY I HEREBY ATTEST THAT THE INFORMATION CONTAINED HEREIN IS TRUE AND CORRECT TO THE BEST OF MY KNOWLEDGE

Submitted Electronically

Do NOT Write in This Space - KCC USE ONLY
Date Tested: Results: Date Plugged: Date Repaired: Date Put Back in Service:
Review Completed by: Comments:
TA Approved: Yes Denied Date:

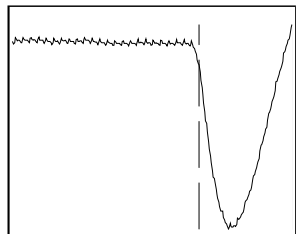
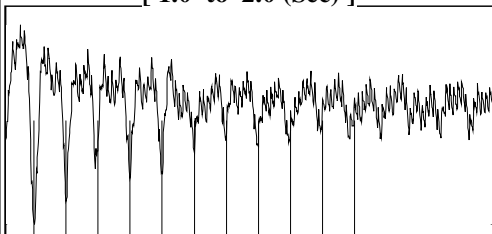
Mail to the Appropriate KCC Conservation Office:

Table with 2 columns: Office Address, Phone. Rows for District Office #1, #2, #3, #4.

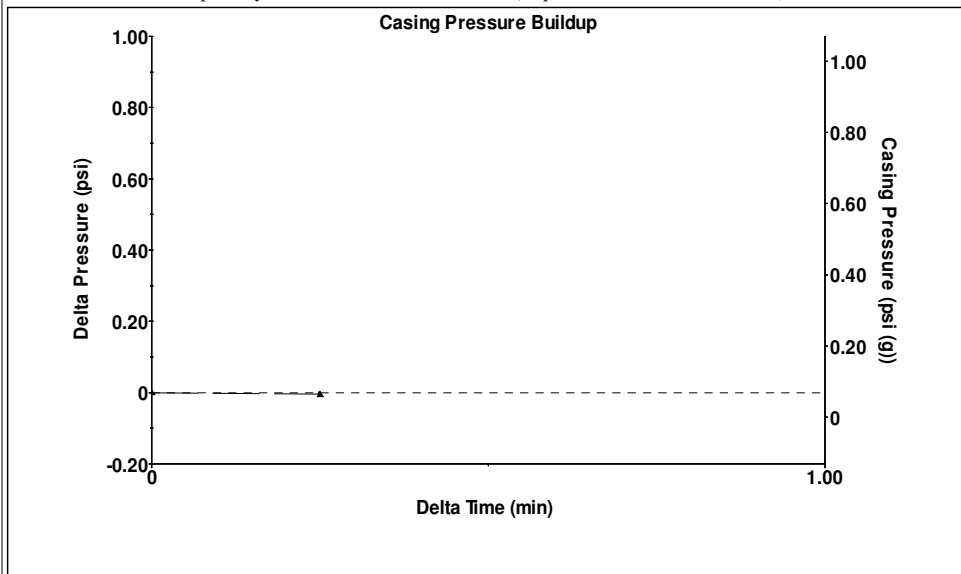


Filter Type High Pass Automatic Collar Count Yes Time 3.727 sec
 Manual Acoustic Velo 962.064 ft/s Manual JTS/sec 15.1745 Joints 58.8606 Jts
 Depth 1865.88 ft

[1.0 to 2.0 (Sec)]

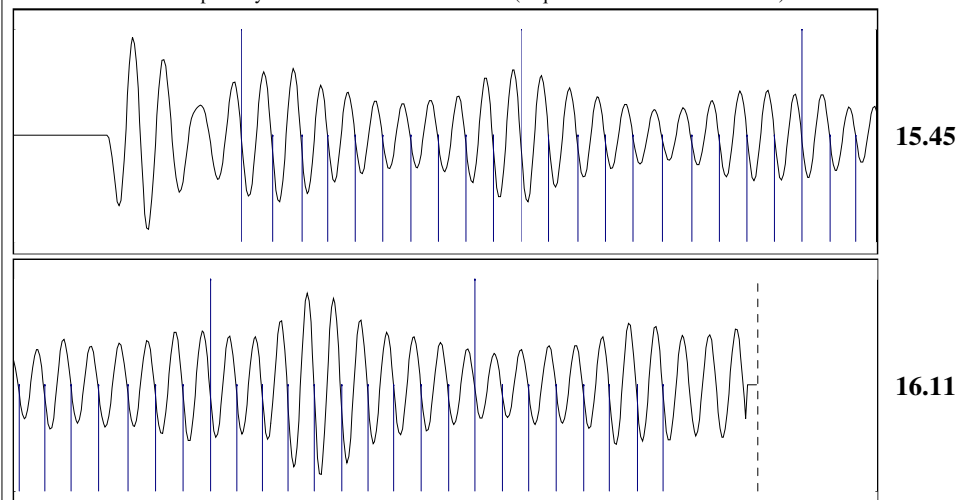


Analysis Method: Automatic



Change in Pressure -0.01 psi PT15262
 Change in Time 0.25 min Range 0 - ? psi

Production	Potential	Casing Pressure	Static
Oil - *-	- *- BBL/D	0.1 psi (g)	
Water - *-	- *- BBL/D	Casing Pressure Buildup	Oil Column Height
Gas - *-	- *- Mscf/D	-0.005 psi	MD 0 ft
		0.25 min	
IPR Method	Vogel	Gas/Liquid Interface Pressure	Water Column Height
PBHP/SBHP - *-	- *-	1.0 psi (g)	MD 2402 ft
Production Efficiency 0.0			
		Liquid Level Depth	
Oil 40 deg.API		1865.88 ft	
Water 1.05 Sp.Gr.H2O		Pump Intake Depth	
Gas 0.97 Sp.Gr.AIR		- *- ft	
Acoustic Velocity 1001.28 ft/s		Formation Depth	
		4268.00 ft	
		Static BHP	
		1093.1 psi (g)	



Acoustic Velocity 1001.28 ft/s Joints counted 47
 Joints Per Second 15.793 jts/sec Joints to liquid level 58.8606
 Depth to liquid level 1865.88 ft Filter Width 13.1745 17.1745
 Automatic Collar Count Yes Time to 1st Collar 0.528 3.504

May 11, 2021

Kirk Glenn
Novy Oil & Gas, Inc.
PO BOX 559
GODDARD, KS 67052-0559

Re: Temporary Abandonment
API 15-171-20664-00-00
SMITH 16
NE/4 Sec.26-19S-33W
Scott County, Kansas

Dear Kirk Glenn:

"Your temporary abandonment (TA) application for the well listed above has been approved. In accordance with K.A.R. 82-3-111 the TA status of this well will expire 05/11/2022.

- * If you return this well to service or plug it, please notify the District Office.
- * If you sell this well you are required to file a Transfer of Operator form, T-1.
- * If the well will remain temporarily abandoned, you must submit a new TA application, CP-111, before 05/11/2022.

You may contact me at the number above if you have questions.

Very truly yours,

Michael Maier"