

KANSAS CORPORATION COMMISSION
OIL & GAS CONSERVATION DIVISION

TEMPORARY ABANDONMENT WELL APPLICATION

OPERATOR: License#
Name:
Address 1:
Address 2:
City: State: Zip:
Contact Person:
Phone:
Contact Person Email:
Field Contact Person:
Field Contact Person Phone:

API No. 15-
Spot Description:
Sec. Twp. S. R.
GPS Location: Lat: Long:
Datum: NAD27 NAD83 WGS84
County: Elevation:
Lease Name: Well #:
Well Type: Oil Gas OG WSW Other:
SWD Permit #: ENHR Permit #:
Gas Storage Permit #:
Spud Date: Date Shut-In:

Table with 7 columns: Conductor, Surface, Production, Intermediate, Liner, Tubing. Rows include Size, Setting Depth, Amount of Cement, Top of Cement, Bottom of Cement.

Casing Fluid Level from Surface: How Determined? Date:
Casing Squeeze(s): to w / sacks of cement, to w / sacks of cement. Date:
Do you have a valid Oil & Gas Lease? Yes No
Depth and Type: Junk in Hole at Tools in Hole at Casing Leaks: Yes No Depth of casing leak(s):
Type Completion: ALT. I ALT. II Depth of: DV Tool: w / sacks of cement Port Collar: w / sack of cement
Packer Type: Size: Inch Set at: Feet
Total Depth: Plug Back Depth: Plug Back Method:

Geological Date:

Table with 4 columns: Formation Name, Formation Top, Formation Base, Completion Information. Rows 1 and 2.

UNDER PENALTY OF PERJURY I HEREBY ATTEST THAT THE INFORMATION CONTAINED HEREIN IS TRUE AND CORRECT TO THE BEST OF MY KNOWLEDGE

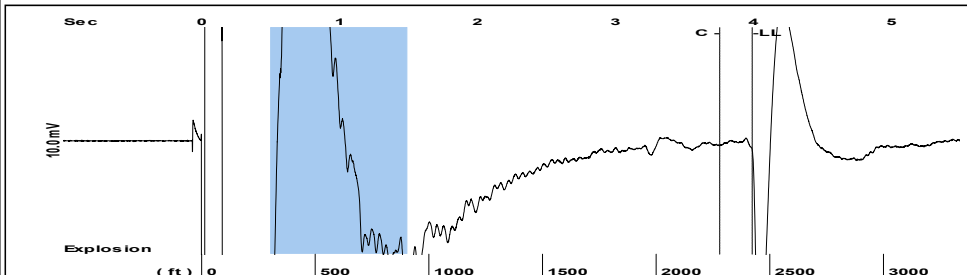
Submitted Electronically

Do NOT Write in This Space - KCC USE ONLY
Date Tested: Results: Date Plugged: Date Repaired: Date Put Back in Service:
Review Completed by: Comments:
TA Approved: Yes Denied Date:

Mail to the Appropriate KCC Conservation Office:

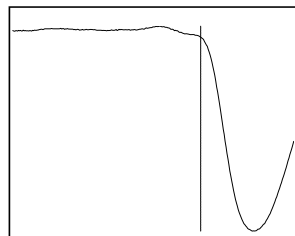
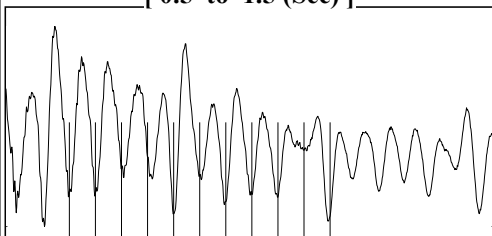
Map of Kansas with 4 numbered districts. Table with 3 columns: District Office Name, Address, Phone Number.

Group: MyWells Well: Kaufman #1 (acquired on: 05/05/21 09:03:15)



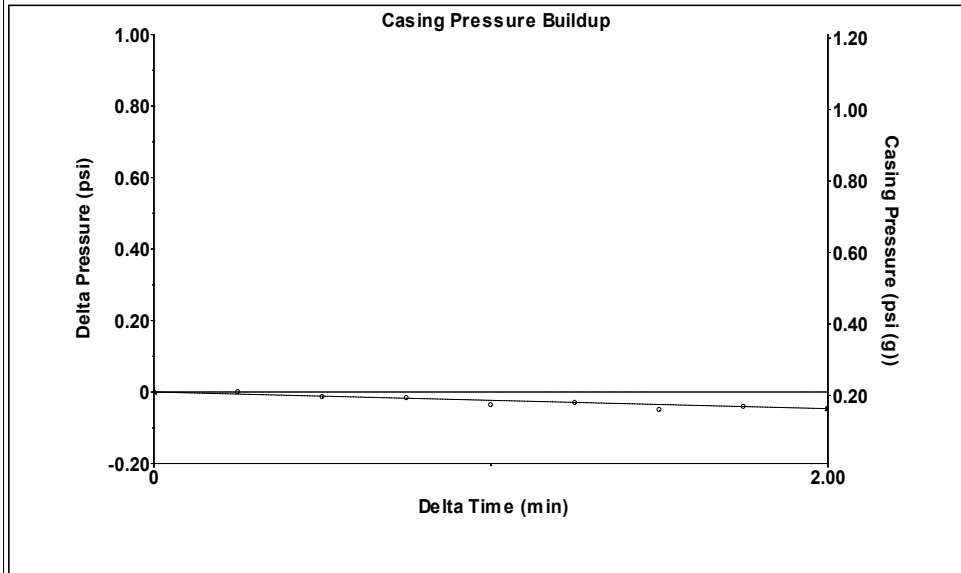
Filter Type High Pass Automatic Collar Count Yes Time 3.991 sec
 Manual Acoustic Velo 1185.05 ft/s Manual JTS/sec 18.6916 Joints 76.3991 Jts
 Depth 2421.85 ft

[0.5 to 1.5 (Sec)]



Analysis Method: Automatic

Group: MyWells Well: Kaufman #1 (acquired on: 05/05/21 09:03:15)

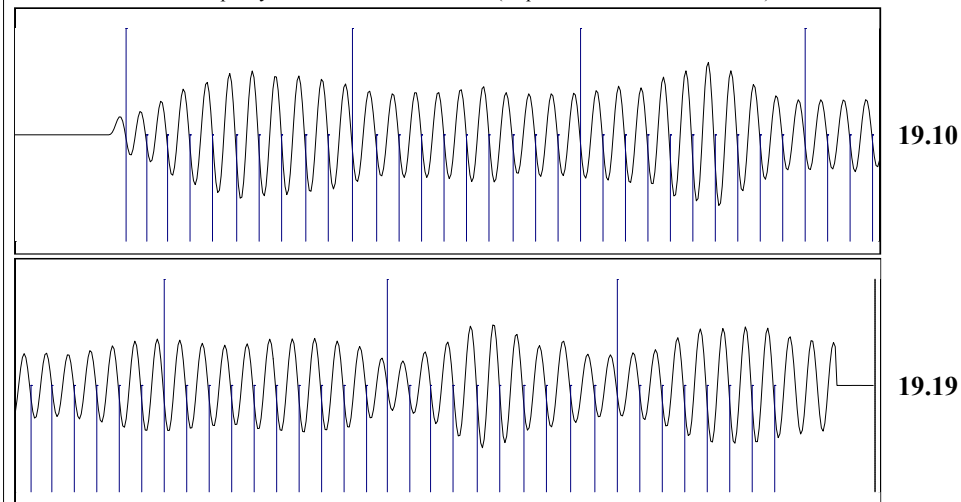


Change in Pressure -0.05 psi PT 17384
 Change in Time 2.00 min Range 0 - ? psi

Group: MyWells Well: Kaufman #1 (acquired on: 05/05/21 09:03:15)

<p>Production</p> <p>Current Potential</p> <p>Oil - * - * - BBL/D</p> <p>Water - * - * - BBL/D</p> <p>Gas - * - * - Mscf/D</p> <p>IPR Method Vogel</p> <p>PBHP/SBHP - * -</p> <p>Production Efficiency 0.0</p> <p>Oil 40 deg.API</p> <p>Water 1.05 Sp.Gr.H2O</p> <p>Gas 0.78 Sp.Gr.AIR</p> <p>Acoustic Velocity 1213.66 ft/s</p> <p>Formation Submergence</p> <p>Total Gaseous Liquid Column HT (TVD) 1670 ft</p> <p>Equivalent Gas Free Liquid HT (TVD) 1670 ft</p> <p>Acoustic Test</p>	<p>Casing Pressure 0.2 psi (g)</p> <p>Casing Pressure Buildup -0.047 psi</p> <p>2.00 min</p> <p>Gas/Liquid Interface Pressure 1.2 psi (g)</p> <p>Liquid Level Depth 2421.85 ft</p> <p>Pump Intake Depth 4092.00 ft</p> <p>Formation Depth 4128.00 ft</p>	<p>Producing</p> <p>Annular Gas Flow 0 Mscf/D</p> <p>% Liquid 100 %</p> <p>Pump Intake 561.1 psi (g)</p> <p>Producing BHP 577.5 psi (g)</p> <p>Static BHP - * - psi (g)</p>
---	--	---

Group: MyWells Well: Kaufman #1 (acquired on: 05/05/21 09:03:15)



Acoustic Velocity 1213.66 ft/s Joints counted 67
 Joints Per Second 19.1429 jts/sec Joints to liquid level 76.3991
 Depth to liquid level 2421.85 ft Filter Width 16.6916 20.6916
 Automatic Collar Count Yes Time to 1st Collar 0.256 3.756

Conservation Division
District Office No. 2
3450 N. Rock Road
Building 600, Suite 601
Wichita, KS 67226



Phone: 316-337-7400
Fax: 316-630-4005
<http://kcc.ks.gov/>

Andrew J. French, Chairperson
Dwight D. Keen, Commissioner
Susan K. Duffy, Commissioner

Laura Kelly, Governor

May 18, 2021

Melody Fletcher
Oil Producers, Inc. of Kansas
1710 WATERFRONT PKWY
WICHITA, KS 67206-6603

Re: Temporary Abandonment
API 15-095-20288-00-00
KAUFMAN 1
SE/4 Sec.07-29S-06W
Kingman County, Kansas

Dear Melody Fletcher:

"Your temporary abandonment (TA) application for the well listed above has been approved. In accordance with K.A.R. 82-3-111 the TA status of this well will expire 05/18/2022.

- * If you return this well to service or plug it, please notify the District Office.
- * If you sell this well you are required to file a Transfer of Operator form, T-1.
- * If the well will remain temporarily abandoned, you must submit a new TA application, CP-111, before 05/18/2022.

You may contact me at the number above if you have questions.

Very truly yours,

Steve VanGieson"