

KANSAS CORPORATION COMMISSION
OIL & GAS CONSERVATION DIVISION

TEMPORARY ABANDONMENT WELL APPLICATION

OPERATOR: License#
Name:
Address 1:
Address 2:
City: State: Zip:
Contact Person:
Phone:
Contact Person Email:
Field Contact Person:
Field Contact Person Phone:

API No. 15-
Spot Description:
Sec. Twp. S. R.
feet from N / S Line of Section
feet from E / W Line of Section
GPS Location: Lat: , Long:
Datum: NAD27 NAD83 WGS84
County: Elevation: GL KB
Lease Name: Well #:
Well Type: Oil Gas OG WSW Other:
SWD Permit #: ENHR Permit #:
Gas Storage Permit #:
Spud Date: Date Shut-In:

Table with 7 columns: Conductor, Surface, Production, Intermediate, Liner, Tubing. Rows include Size, Setting Depth, Amount of Cement, Top of Cement, Bottom of Cement.

Casing Fluid Level from Surface: How Determined? Date:
Casing Squeeze(s): to w / sacks of cement, to w / sacks of cement. Date:
Do you have a valid Oil & Gas Lease? Yes No
Depth and Type: Junk in Hole at Tools in Hole at Casing Leaks: Yes No Depth of casing leak(s):
Type Completion: ALT. I ALT. II Depth of: DV Tool: w / sacks of cement Port Collar: w / sack of cement
Packer Type: Size: Inch Set at: Feet
Total Depth: Plug Back Depth: Plug Back Method:

Geological Data:

Table with 4 columns: Formation Name, Formation Top, Formation Base, Completion Information. Rows 1 and 2.

UNDER PENALTY OF PERJURY I HEREBY ATTEST THAT THE INFORMATION CONTAINED HEREIN IS TRUE AND CORRECT TO THE BEST OF MY KNOWLEDGE

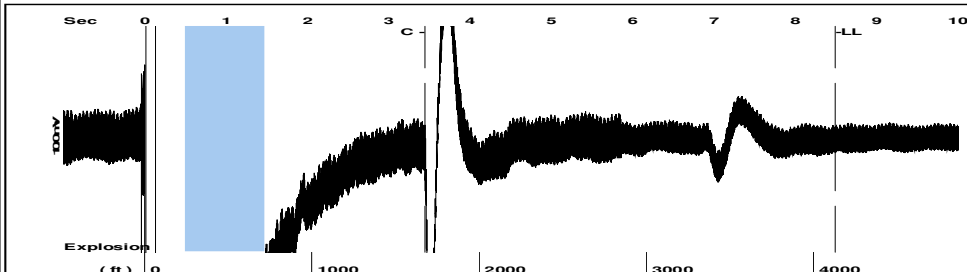
Submitted Electronically

Do NOT Write in This Space - KCC USE ONLY
Date Tested: Results: Date Plugged: Date Repaired: Date Put Back in Service:
Review Completed by: Comments:
TA Approved: Yes Denied Date:

Mail to the Appropriate KCC Conservation Office:

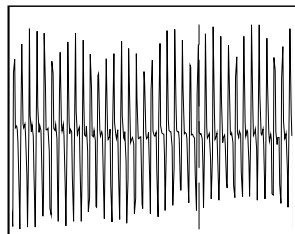
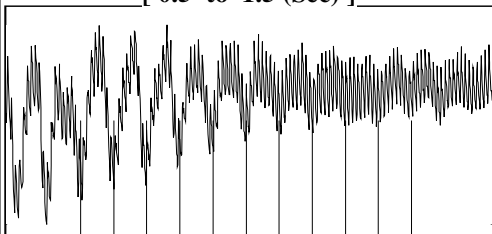
Table with 2 columns: Office Address, Phone. Rows for District Office #1, #2, #3, #4.

Group: Novy Oil & Gas Well: Patton B 1 (acquired on: 05/07/21 09:31:19)



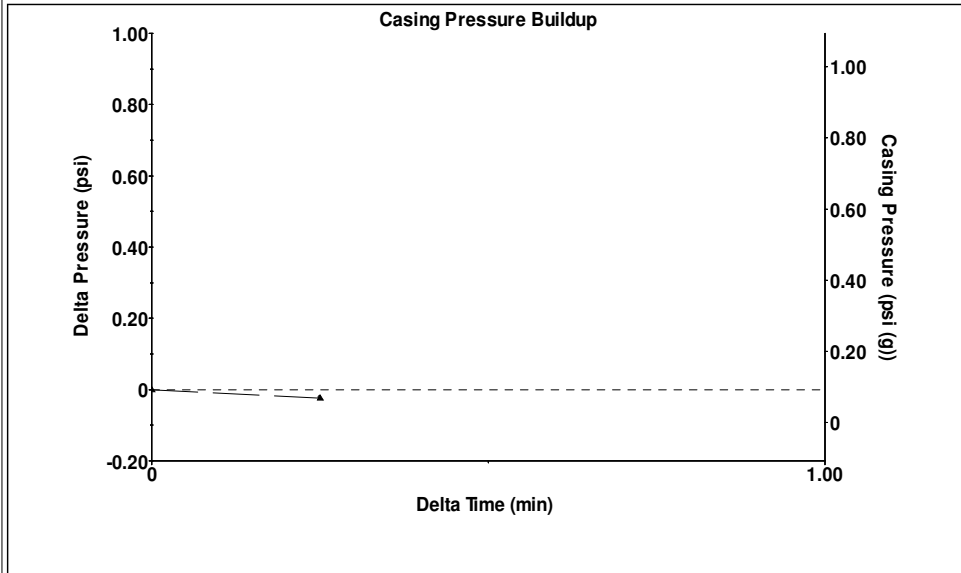
Filter Type High Pass Automatic Collar Count Yes Time 8.5 sec
 Manual Acoustic Velo 932.353 ft/s Manual JTS/sec 14.7059 Joints 130.268 Jts
 Depth 4129.50 ft

[0.5 to 1.5 (Sec)]



Analysis Method: Automatic

Group: Novy Oil & Gas Well: Patton B 1 (acquired on: 05/07/21 09:31:19)

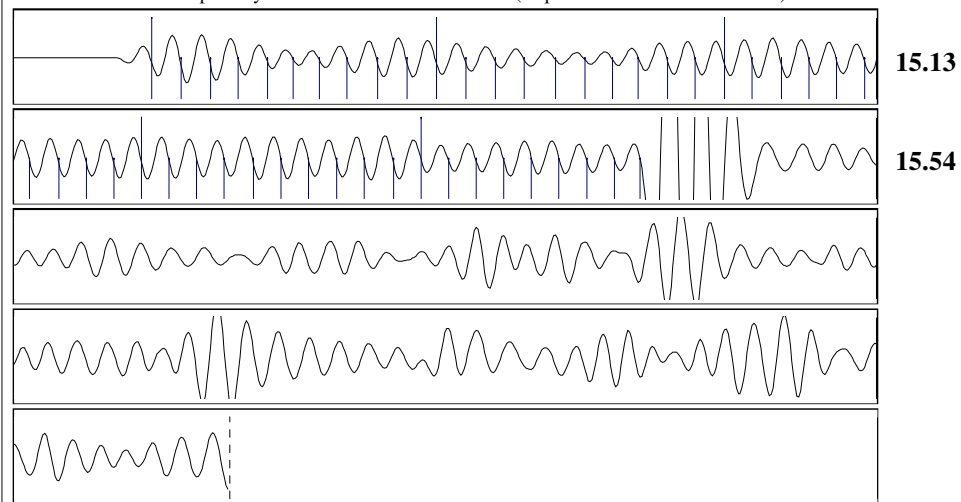


Change in Pressure -0.02 psi PT15262
 Change in Time 0.25 min Range 0 - ? psi

Group: Novy Oil & Gas Well: Patton B 1 (acquired on: 05/07/21 09:31:19)

Production Current	Potential	Casing Pressure	Static
Oil -*-	-*- BBL/D	0.1 psi (g)	
Water -*-	-*- BBL/D	Casing Pressure Buildup	Oil Column Height
Gas -*-	-*- Mscf/D	-0.024 psi	MD 0 ft
		0.25 min	
IPR Method	Vogel	Gas/Liquid Interface Pressure	Water Column Height
PBHP/SBHP	-*-	2.3 psi (g)	MD 867 ft
Production Efficiency	0.0		
Oil 40 deg.API		Liquid Level Depth	
Water 1.05 Sp.Gr.H2O		4129.50 ft	
Gas 1.01 Sp.Gr.AIR		Pump Intake Depth	
		-*- ft	
Acoustic Velocity	971.648 ft/s	Formation Depth	
		4997.00 ft	
		Static BHP	
		396.7 psi (g)	

Group: Novy Oil & Gas Well: Patton B 1 (acquired on: 05/07/21 09:31:19)



Acoustic Velocity 971.648 ft/s Joints counted 48
 Joints Per Second 15.3257 jts/sec Joints to liquid level 130.268
 Depth to liquid level 4129.5 ft Filter Width 12.7059 16.7059
 Automatic Collar Count Yes Time to 1st Collar 0.32 3.452

May 19, 2021

Kirk Glenn
Novy Oil & Gas, Inc.
PO BOX 559
GODDARD, KS 67052-0559

Re: Temporary Abandonment
API 15-171-20151-00-00
PATTON B 1
NW/4 Sec.36-19S-33W
Scott County, Kansas

Dear Kirk Glenn:

"Your temporary abandonment (TA) application for the well listed above has been approved. In accordance with K.A.R. 82-3-111 the TA status of this well will expire 05/19/2022.

- * If you return this well to service or plug it, please notify the District Office.
- * If you sell this well you are required to file a Transfer of Operator form, T-1.
- * If the well will remain temporarily abandoned, you must submit a new TA application, CP-111, before 05/19/2022.

You may contact me at the number above if you have questions.

Very truly yours,

Michael Maier"