

KANSAS CORPORATION COMMISSION
OIL & GAS CONSERVATION DIVISION

TEMPORARY ABANDONMENT WELL APPLICATION

OPERATOR: License#
Name:
Address 1:
Address 2:
City: State: Zip:
Contact Person:
Phone:
Contact Person Email:
Field Contact Person:
Field Contact Person Phone:

API No. 15-
Spot Description:
Sec. Twp. S. R.
GPS Location: Lat: Long:
Datum: NAD27 NAD83 WGS84
County: Elevation:
Lease Name: Well #:
Well Type: Oil Gas OG WSW Other:
SWD Permit #: ENHR Permit #:
Gas Storage Permit #:
Spud Date: Date Shut-In:

Table with 7 columns: Conductor, Surface, Production, Intermediate, Liner, Tubing. Rows include Size, Setting Depth, Amount of Cement, Top of Cement, Bottom of Cement.

Casing Fluid Level from Surface: How Determined? Date:
Casing Squeeze(s): to w / sacks of cement, to w / sacks of cement. Date:
Do you have a valid Oil & Gas Lease? Yes No
Depth and Type: Junk in Hole at Tools in Hole at Casing Leaks: Yes No Depth of casing leak(s):
Type Completion: ALT. I ALT. II Depth of: DV Tool: w / sacks of cement Port Collar: w / sack of cement
Packer Type: Size: Inch Set at: Feet
Total Depth: Plug Back Depth: Plug Back Method:

Geological Data:

Table with 4 columns: Formation Name, Formation Top, Formation Base, Completion Information. Rows 1 and 2.

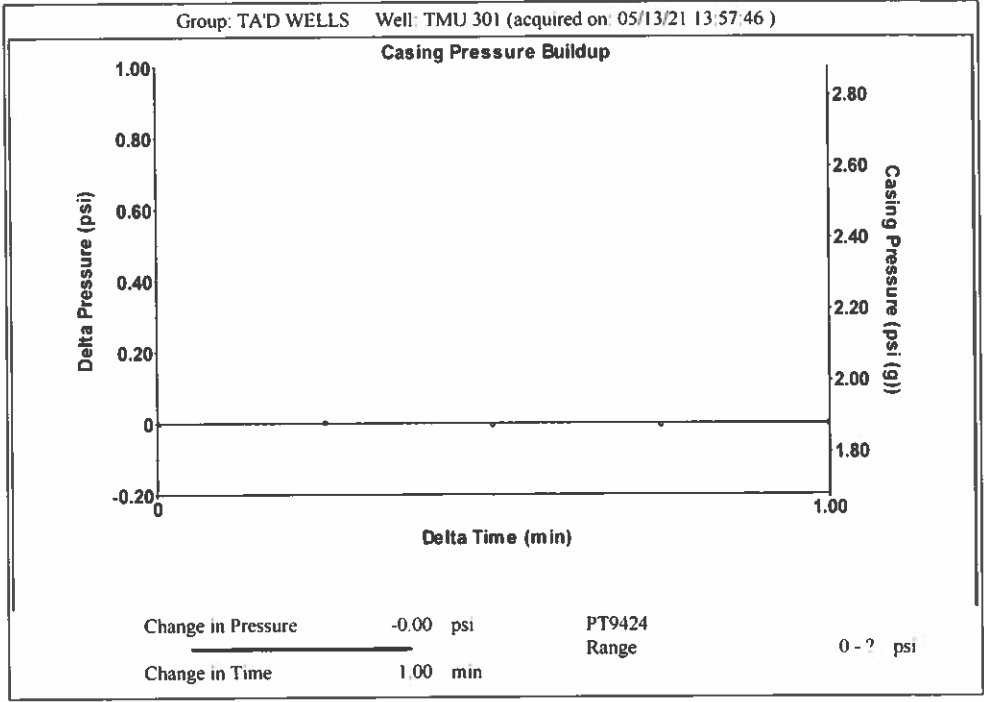
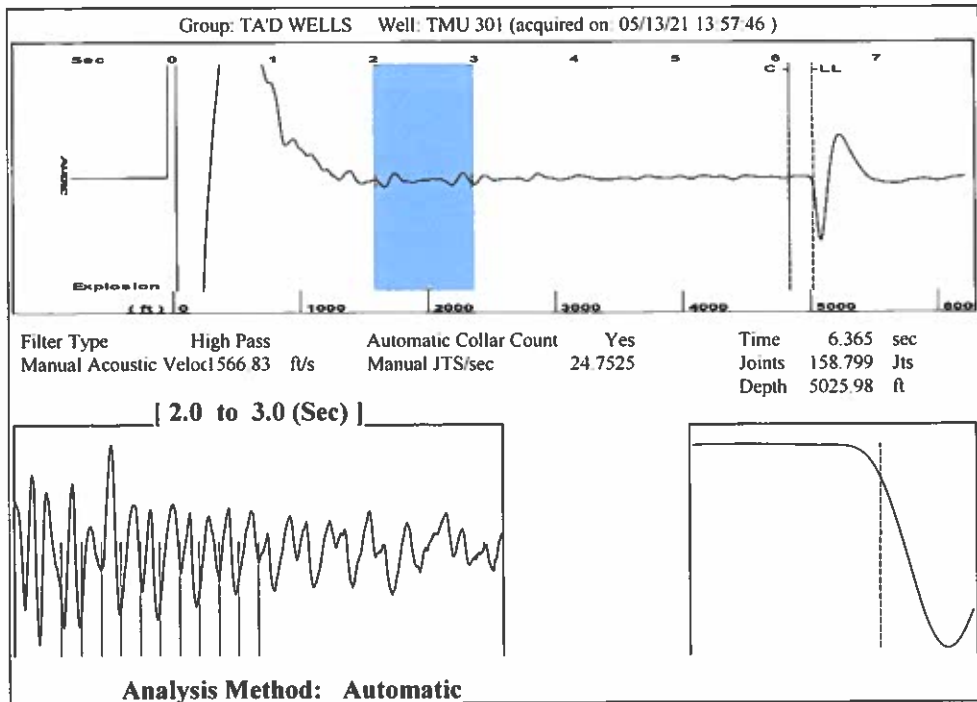
UNDER PENALTY OF PERJURY I HEREBY ATTEST THAT THE INFORMATION CONTAINED HEREIN IS TRUE AND CORRECT TO THE BEST OF MY KNOWLEDGE

Submitted Electronically

Do NOT Write in This Space - KCC USE ONLY
Date Tested: Results: Date Plugged: Date Repaired: Date Put Back in Service:
Review Completed by: Comments:
TA Approved: Yes Denied Date:

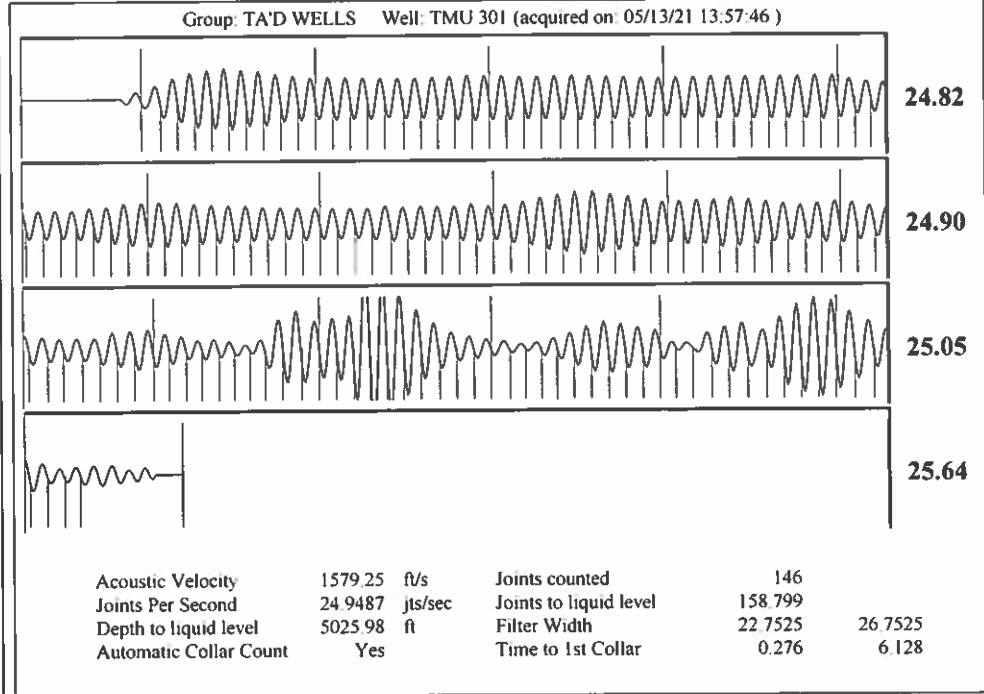
Mail to the Appropriate KCC Conservation Office:

Table with 3 columns: District Office #, Address, Phone. Rows 1-4.



Group: TA'D WELLS Well: TMU 301 (acquired on 05/13/21 13:57:46)

Production	Potential	Casing Pressure		Producing	
Oil - * -	- * - BBL/D	1.9 psi (g)		Annular Gas Flow	0 Mscf/D
Water - * -	- * - BBL/D	Casing Pressure Buildup		% Liquid	100 %
Gas - * -	- * - Mscf/D	-0.0 psi			
		1.00 min			
IPR Method	Vogel	Gas/Liquid Interface Pressure			
PBHP/SBHP	- * -	3.5 psi (g)			
Production Efficiency	0.0				
Oil 40 deg API		Liquid Level Depth			
Water 1.05 Sp.Gr.H2O		5025.98 ft			
Gas 0.55 Sp.Gr.AIR		Pump Intake Depth			
		4759.00 ft			
Acoustic Velocity	1579.25 ft/s	Formation Depth			
		5025.00 ft			
Formation Submergence					
Total Gaseous Liquid Column HT (TVD)	- * - ft				
Equivalent Gas Free Liquid HT (TVD)	- * - ft				
Acoustic Test					
		Pump Intake			
		3.4 psi (g)			
		Producing BHP			
		3.5 psi (g)			
		Static BHP			
		- * - psi (g)			



Conservation Division
District Office No. 1
210 E. Frontview, Suite A
Dodge City, KS 67801



Phone: 620-682-7933
<http://kcc.ks.gov/>

Andrew J. French, Chairperson
Dwight D. Keen, Commissioner
Susan K. Duffy, Commissioner

Laura Kelly, Governor

May 19, 2021

Katherine McClurkan
Merit Energy Company, LLC
13727 Noel Road, Suite 1200
Dallas, TX 75240-7362

Re: Temporary Abandonment
API 15-129-20832-00-00
Turmorrow Morrow Unit (Galloway A) 301 (1)
SW/4 Sec.08-33S-43W
Morton County, Kansas

Dear Katherine McClurkan:

"Your temporary abandonment (TA) application for the well listed above has been approved. In accordance with K.A.R. 82-3-111 the TA status of this well will expire 05/19/2022.

- * If you return this well to service or plug it, please notify the District Office.
- * If you sell this well you are required to file a Transfer of Operator form, T-1.
- * If the well will remain temporarily abandoned, you must submit a new TA application, CP-111, before 05/19/2022.

You may contact me at the number above if you have questions.

Very truly yours,

Michael Maier"