

KANSAS CORPORATION COMMISSION
OIL & GAS CONSERVATION DIVISION

TEMPORARY ABANDONMENT WELL APPLICATION

OPERATOR: License#
Name:
Address 1:
Address 2:
City: State: Zip:
Contact Person:
Phone:
Contact Person Email:
Field Contact Person:
Field Contact Person Phone:

API No. 15-
Spot Description:
Sec. Twp. S. R.
feet from N / S Line of Section
feet from E / W Line of Section
GPS Location: Lat: , Long:
Datum: NAD27 NAD83 WGS84
County: Elevation: GL KB
Lease Name: Well #:
Well Type: Oil Gas OG WSW Other:
SWD Permit #: ENHR Permit #:
Gas Storage Permit #:
Spud Date: Date Shut-In:

Table with 7 columns: Conductor, Surface, Production, Intermediate, Liner, Tubing. Rows include Size, Setting Depth, Amount of Cement, Top of Cement, Bottom of Cement.

Casing Fluid Level from Surface: How Determined? Date:
Casing Squeeze(s): to w / sacks of cement, to w / sacks of cement. Date:
Do you have a valid Oil & Gas Lease? Yes No
Depth and Type: Junk in Hole at Tools in Hole at Casing Leaks: Yes No Depth of casing leak(s):
Type Completion: ALT. I ALT. II Depth of: DV Tool: w / sacks of cement Port Collar: w / sack of cement
Packer Type: Size: Inch Set at: Feet
Total Depth: Plug Back Depth: Plug Back Method:

Geological Data:

Table with 4 columns: Formation Name, Formation Top, Formation Base, Completion Information. Rows 1 and 2.

UNDER PENALTY OF PERJURY I HEREBY ATTEST THAT THE INFORMATION CONTAINED HEREIN IS TRUE AND CORRECT TO THE BEST OF MY KNOWLEDGE

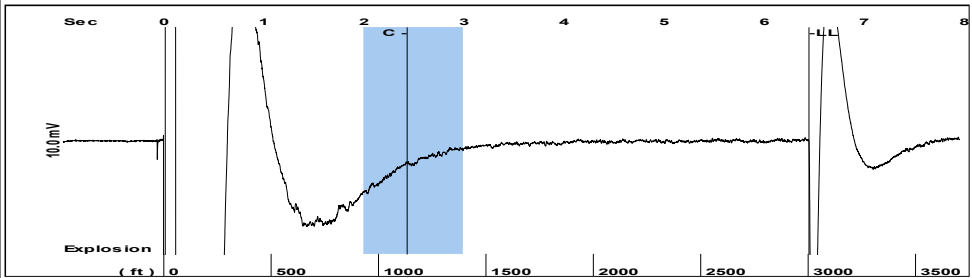
Submitted Electronically

Do NOT Write in This Space - KCC USE ONLY
Date Tested: Results: Date Plugged: Date Repaired: Date Put Back in Service:
Review Completed by: Comments:
TA Approved: Yes Denied Date:

Mail to the Appropriate KCC Conservation Office:

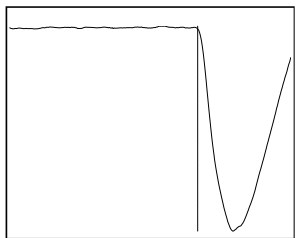
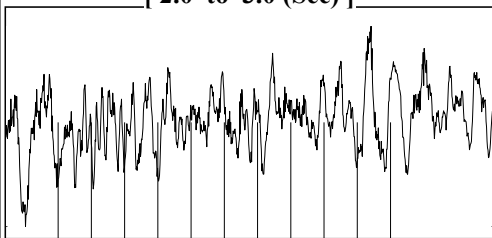
Table with 2 columns: Office Address, Phone. Rows for District Office #1, #2, #3, #4.

Group: MyWells Well: Unruh-D # 2 (acquired on: 05/14/21 10:59:35)



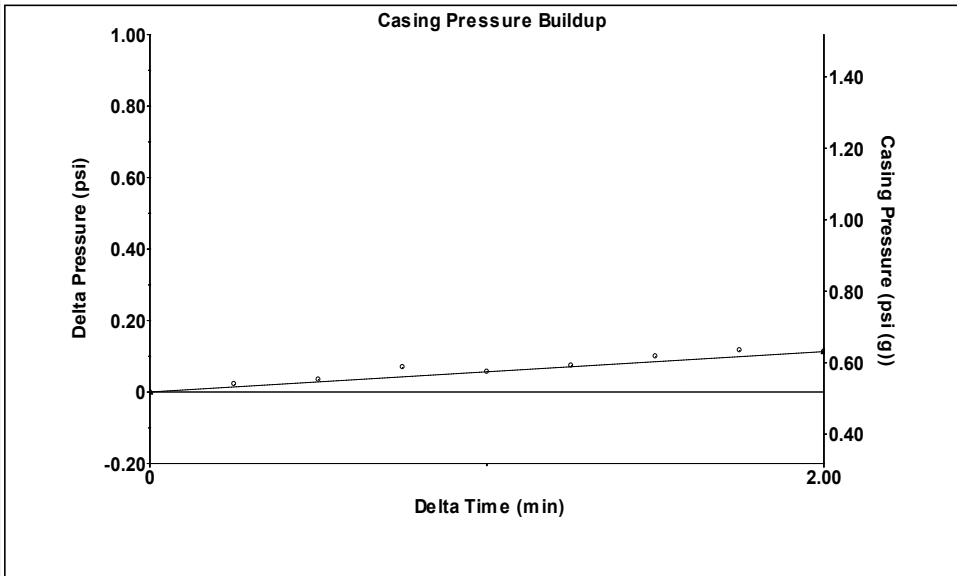
Filter Type High Pass Automatic Collar Count Yes Time 6.448 sec
 Manual Acoustic Velo 915.249 ft/s Manual JTS/sec 14.6628 Joints 96.2388 Jts
 Depth 3003.61 ft

[2.0 to 3.0 (Sec)]



Analysis Method: Automatic

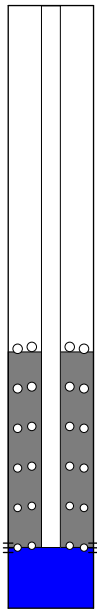
Group: MyWells Well: Unruh-D # 2 (acquired on: 05/14/21 10:59:35)



Change in Pressure 0.11 psi PT 17384
 Change in Time 2.00 min Range 0 - ? psi

Group: MyWells Well: Unruh-D # 2 (acquired on: 05/14/21 10:59:35)

Production	Potential	Casing Pressure
Current	- * - BBL/D	0.5 psi (g)
Oil - * -	- * - BBL/D	Casing Pressure Buildup
Water - * -	- * - Mscf/D	0.1 psi
Gas - * -		2.00 min
		Gas/Liquid Interface Pressure
		2.2 psi (g)
IPR Method	Vogel	Liquid Level Depth
PBHP/SBHP	- * -	3003.61 ft
Production Efficiency	0.0	Pump Intake Depth
		5060.00 ft
		Formation Depth
		5060.00 ft



Producing

Annular Gas Flow 1 Mscf/D

% Liquid 93 %

Pump Intake 640.9 psi (g)

Producing BHP 640.9 psi (g)

Static BHP - * - psi (g)

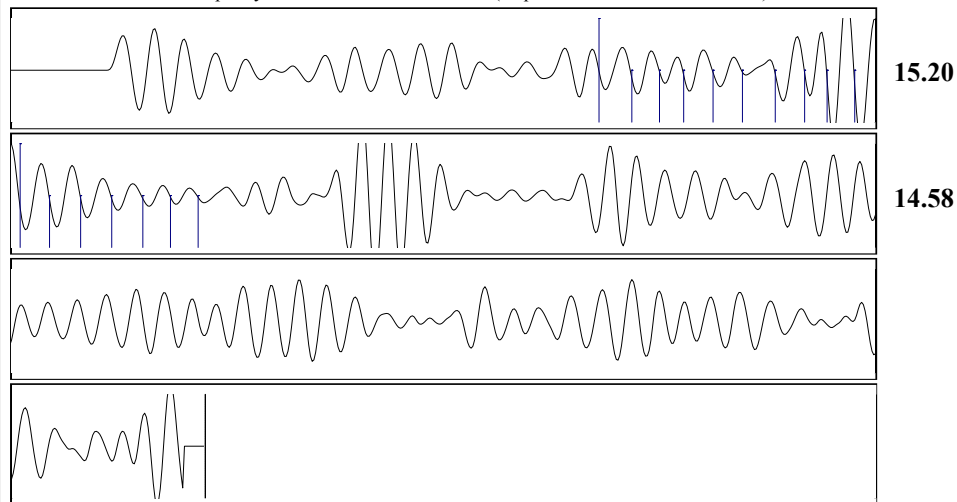
Formation Submergence

Total Gaseous Liquid Column HT (TVD) 2056 ft

Equivalent Gas Free Liquid HT (TVD) 1913 ft

Acoustic Test

Group: MyWells Well: Unruh-D # 2 (acquired on: 05/14/21 10:59:35)



Acoustic Velocity	931.642 ft/s	Joints counted	16
Joints Per Second	14.9254 jts/sec	Joints to liquid level	96.2388
Depth to liquid level	3003.61 ft	Filter Width	12.6628
Automatic Collar Count	Yes	Time to 1st Collar	1.36 2.432

Conservation Division
District Office No. 1
210 E. Frontview, Suite A
Dodge City, KS 67801



Phone: 620-682-7933
<http://kcc.ks.gov/>

Andrew J. French, Chairperson
Dwight D. Keen, Commissioner
Susan K. Duffy, Commissioner

Laura Kelly, Governor

May 19, 2021

Melody C. Fletcher
Oil Producers, Inc. of Kansas
1710 N Waterfront Pkwy
WICHITA, KS 67206-6603

Re: Temporary Abandonment
API 15-033-21201-00-00
UNRUH D 2
NW/4 Sec.02-31S-18W
Comanche County, Kansas

Dear Melody C. Fletcher:

"Your temporary abandonment (TA) application for the well listed above has been approved. In accordance with K.A.R. 82-3-111 the TA status of this well will expire 05/19/2022.

- * If you return this well to service or plug it, please notify the District Office.
- * If you sell this well you are required to file a Transfer of Operator form, T-1.
- * If the well will remain temporarily abandoned, you must submit a new TA application, CP-111, before 05/19/2022.

You may contact me at the number above if you have questions.

Very truly yours,

Michael Maier"