

KANSAS CORPORATION COMMISSION
OIL & GAS CONSERVATION DIVISION

Form must be Typed
Form must be signed

TEMPORARY ABANDONMENT WELL APPLICATION

All blanks must be complete

OPERATOR: License#
Name:
Address 1:
Address 2:
City: State: Zip:
Contact Person:
Phone:
Contact Person Email:
Field Contact Person:
Field Contact Person Phone:

API No. 15-
Spot Description:
Sec. Twp. S. R.
feet from N / S Line of Section
feet from E / W Line of Section
GPS Location: Lat: , Long:
Datum: NAD27 NAD83 WGS84
County: Elevation: GL KB
Lease Name: Well #:
Well Type: Oil Gas OG WSW Other:
SWD Permit #: ENHR Permit #:
Gas Storage Permit #:
Spud Date: Date Shut-In:

Table with 7 columns: Conductor, Surface, Production, Intermediate, Liner, Tubing. Rows include Size, Setting Depth, Amount of Cement, Top of Cement, Bottom of Cement.

Casing Fluid Level from Surface: How Determined? Date:
Casing Squeeze(s): to w / sacks of cement, to w / sacks of cement. Date:
Do you have a valid Oil & Gas Lease? Yes No
Depth and Type: Junk in Hole at Tools in Hole at Casing Leaks: Yes No Depth of casing leak(s):
Type Completion: ALT. I ALT. II Depth of: DV Tool: w / sacks of cement Port Collar: w / sack of cement
Packer Type: Size: Inch Set at: Feet
Total Depth: Plug Back Depth: Plug Back Method:

Geological Data:

Table with 4 columns: Formation Name, Formation Top, Formation Base, Completion Information. Rows 1 and 2.

UNDER PENALTY OF PERJURY I HEREBY ATTEST THAT THE INFORMATION CONTAINED HEREIN IS TRUE AND CORRECT TO THE BEST OF MY KNOWLEDGE

Submitted Electronically

Do NOT Write in This Space - KCC USE ONLY
Date Tested: Results: Date Plugged: Date Repaired: Date Put Back in Service:
Review Completed by: Comments:
TA Approved: Yes Denied Date:

Mail to the Appropriate KCC Conservation Office:

Table with 3 columns: District Office, Address, Phone. Rows for District Office #1, #2, #3, #4.

(((ECHOMETER)))

Eakle #10 05/13/2021 07:30:16AM

Liquid Level

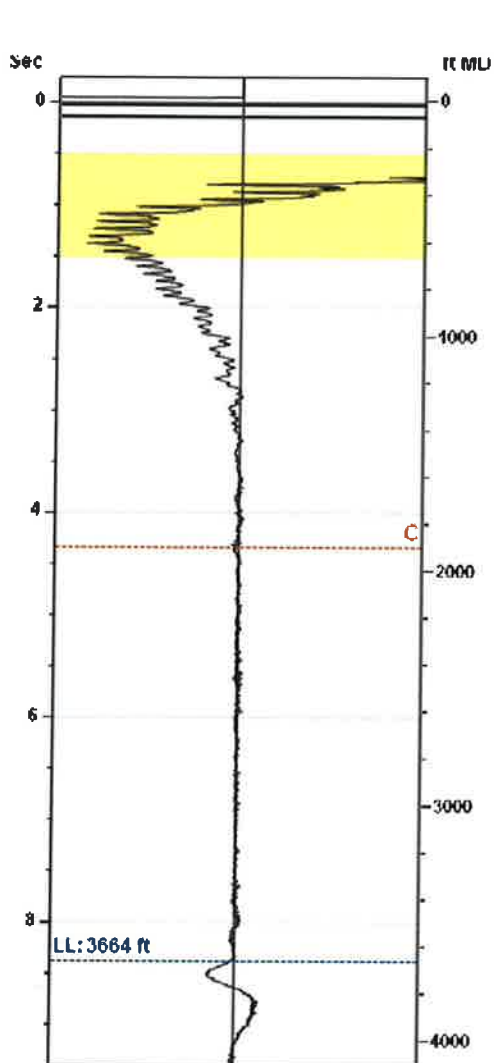
3664 ft MD

Fluid Above Pump

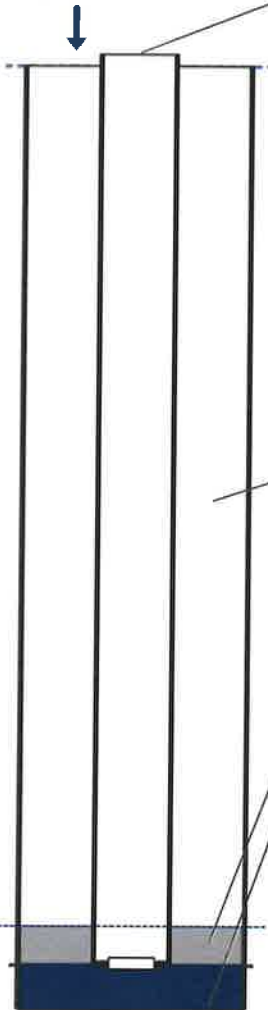
158 ft TVD

Equivalent Gas Free Above Pump

158 ft TVD



Gun - WRFG 284



Production

Date Entered	05/13/21		
	Current	Potential	
Oil	**	**	BBL/D
Water	**	**	BBL/D
Gas	**	**	Mscf/D
IPR Method	Vogel		
PBHP/SBHP	-0.00		
Producing Efficiency	0.00%		

Casing Pressure

Pressure ** psi (g)

Annular Gas Flow

Gas Flow 0.0 Mscf/D

Fluid Properties

% Liquid Above Pump	100.00%
% Liquid Below Pump	100.00%

Depths

Pump Intake Depth	3822 ft
Formation Depth	3842 ft

Wellbore Pressures

PIP	53.5 psi (g)
PBHP	62.6 psi (g)
SBHP	**
Gas/Liq Interface	0.0 psi (g)

Collar Analysis (Automatic)



Average Acoustic Velocity	873 ft/s
Average Joints Per Sec.	13.77 Jts/sec
Joints To Liquid	115.36 Jts

Casing Pressure Buildup

No Pressure Acquired

Casing Pressure	** psi (g)
Buildup	** psi (g)
Buildup Time	** sec
Gas Gravity from Collar Analysis (Automatic)	0.7000 Air = 1

Comments and Recommendations

Echometer Company
 5001 Ditto Lane
 Wichita Falls, TX 76302
 (940) 767-4334
 info@echometer.com

Conservation Division
District Office No. 4
2301 E. 13th Street
Hays, KS 67601-2651



Phone: 785-261-6250
Fax: 785-625-0564
<http://kcc.ks.gov/>

Andrew J. French, Chairperson
Dwight D. Keen, Commissioner
Susan K. Duffy, Commissioner

Laura Kelly, Governor

May 20, 2021

Rashell Patten
Davis Petroleum, Inc.
7 SW 26 Ave
GREAT BEND, KS 67530-6525

Re: Temporary Abandonment
API 15-195-21036-00-00
EAKLE 10
NW/4 Sec.35-11S-22W
Trego County, Kansas

Dear Rashell Patten:

"Your temporary abandonment (TA) application for the well listed above has been approved. In accordance with K.A.R. 82-3-111 the TA status of this well will expire 05/20/2022.

- * If you return this well to service or plug it, please notify the District Office.
- * If you sell this well you are required to file a Transfer of Operator form, T-1.
- * If the well will remain temporarily abandoned, you must submit a new TA application, CP-111, before 05/20/2022.

You may contact me at the number above if you have questions.

Very truly yours,

RICHARD WILLIAMS"