

KANSAS CORPORATION COMMISSION
OIL & GAS CONSERVATION DIVISION

TEMPORARY ABANDONMENT WELL APPLICATION

OPERATOR: License#
Name:
Address 1:
Address 2:
City: State: Zip:
Contact Person:
Phone:
Contact Person Email:
Field Contact Person:
Field Contact Person Phone:

API No. 15-
Spot Description:
Sec. Twp. S. R.
GPS Location: Lat: Long:
Datum: NAD27 NAD83 WGS84
County: Elevation:
Lease Name: Well #:
Well Type: Oil Gas OG WSW Other:
SWD Permit #: ENHR Permit #:
Gas Storage Permit #:
Spud Date: Date Shut-In:

Table with 7 columns: Conductor, Surface, Production, Intermediate, Liner, Tubing. Rows include Size, Setting Depth, Amount of Cement, Top of Cement, Bottom of Cement.

Casing Fluid Level from Surface: How Determined? Date:
Casing Squeeze(s): to w / sacks of cement, to w / sacks of cement. Date:
Do you have a valid Oil & Gas Lease? Yes No
Depth and Type: Junk in Hole at Tools in Hole at Casing Leaks: Yes No Depth of casing leak(s):
Type Completion: ALT. I ALT. II Depth of: DV Tool: w / sacks of cement Port Collar: w / sack of cement
Packer Type: Size: Inch Set at: Feet
Total Depth: Plug Back Depth: Plug Back Method:

Geological Data:

Table with 4 columns: Formation Name, Formation Top, Formation Base, Completion Information. Rows 1 and 2.

UNDER PENALTY OF PERJURY I HEREBY ATTEST THAT THE INFORMATION CONTAINED HEREIN IS TRUE AND CORRECT TO THE BEST OF MY KNOWLEDGE

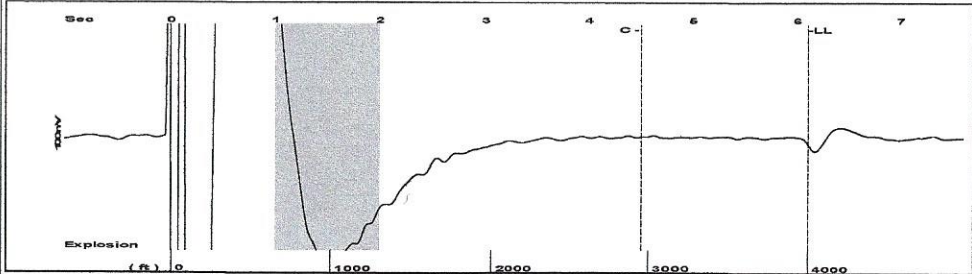
Submitted Electronically

Do NOT Write in This Space - KCC USE ONLY
Date Tested: Results: Date Plugged: Date Repaired: Date Put Back in Service:
Review Completed by: Comments:
TA Approved: Yes Denied Date:

Mail to the Appropriate KCC Conservation Office:

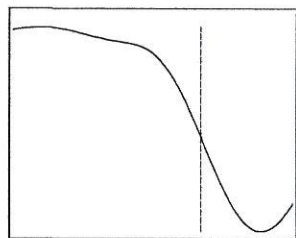
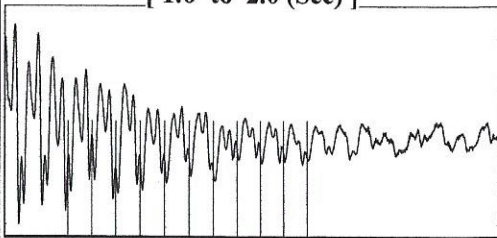
Map of Kansas with 4 numbered districts. Table with 3 columns: District Office Name, Address, Phone Number.

Group: Belpre Well: Schartz 4-12 (acquired on: 04/06/21 13:01:32)



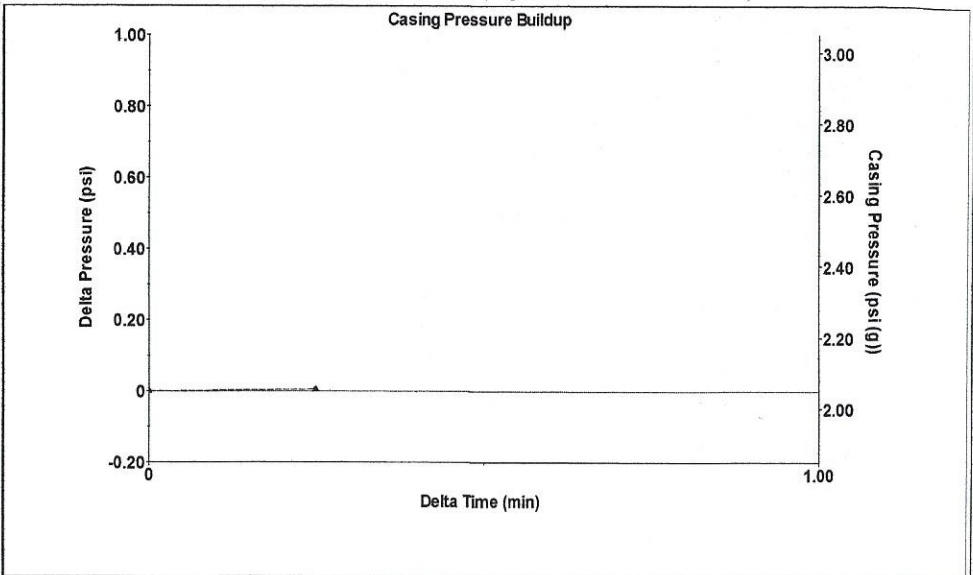
Filter Type High Pass Automatic Collar Count Yes Time 6.098 sec
 Manual Acoustic Velo 1302.89 ft/s Manual JTS/sec 20.6612 Joints 126.921 Jts
 Depth 4001.83 ft

[1.0 to 2.0 (Sec)]



Analysis Method: Automatic

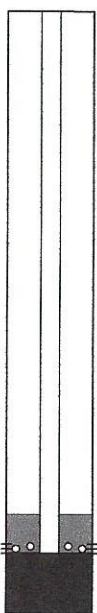
Group: Belpre Well: Schartz 4-12 (acquired on: 04/06/21 13:01:32)



Change in Pressure 0.00 psi PT13440
 Change in Time 0.25 min Range 0 - 7 psi

Group: Belpre Well: Schartz 4-12 (acquired on: 04/06/21 13:01:32)

Production Current	Potential	Casing Pressure
Oil -*-	-*- BBL/D	2.0 psi (g)
Water -*-	-*- BBL/D	Casing Pressure Buildup
Gas -*-	-*- Mscf/D	0.0 psi
		0.25 min
IPR Method	Vogel	Gas/Liquid Interface Pressure
PBHP/SBHP	-*-	3.7 psi (g)
Production Efficiency	0.0	
Oil 40 deg.API		Liquid Level Depth
Water 1.05 Sp.Gr.H2O		4001.83 ft
Gas 0.70 Sp.Gr.AIR		Pump Intake Depth
		4351.00 ft
Acoustic Velocity	1312.51 ft/s	Formation Depth
		4311.00 ft



Producing

Annular Gas Flow 0 Mscf/D

% Liquid 99 %

Pump Intake 120.2 psi (g)

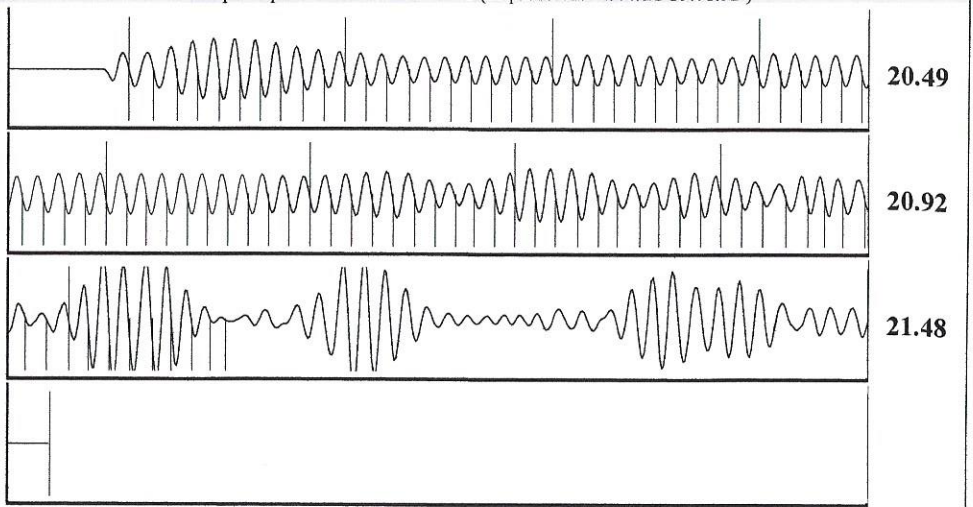
Producing BHP 106.7 psi (g)

Static BHP -*- psi (g)

Formation Submergence 349 ft
 Total Gaseous Liquid Column HT (TVD) 345 ft
 Equivalent Gas Free Liquid HT (TVD) 345 ft

Acoustic Test

Group: Belpre Well: Schartz 4-12 (acquired on: 04/06/21 13:01:32)



Acoustic Velocity	1312.51 ft/s	Joints counted	88
Joints Per Second	20.8136 jts/sec	Joints to liquid level	126.921
Depth to liquid level	4001.83 ft	Filter Width	18.6612
Automatic Collar Count	Yes	Time to 1st Collar	0.276
			4.504

Conservation Division
District Office No. 1
210 E. Frontview, Suite A
Dodge City, KS 67801



Phone: 620-682-7933
<http://kcc.ks.gov/>

Andrew J. French, Chairperson
Dwight D. Keen, Commissioner
Susan K. Duffy, Commissioner

Laura Kelly, Governor

May 25, 2021

Loveness Mpanje
F. G. Holl Company L.L.C.
9431 E CENTRAL STE 100
WICHITA, KS 67206-2563

Re: Temporary Abandonment
API 15-047-21031-00-00
SCHARTZ 4-12
SE/4 Sec.12-24S-17W
Edwards County, Kansas

Dear Loveness Mpanje:

"Your temporary abandonment (TA) application for the well listed above has been approved. In accordance with K.A.R. 82-3-111 the TA status of this well will expire 05/25/2022.

- * If you return this well to service or plug it, please notify the District Office.
- * If you sell this well you are required to file a Transfer of Operator form, T-1.
- * If the well will remain temporarily abandoned, you must submit a new TA application, CP-111, before 05/25/2022.

You may contact me at the number above if you have questions.

Very truly yours,

Michael Maier"