

KANSAS CORPORATION COMMISSION
OIL & GAS CONSERVATION DIVISION

TEMPORARY ABANDONMENT WELL APPLICATION

OPERATOR: License#
Name:
Address 1:
Address 2:
City: State: Zip:
Contact Person:
Phone:
Contact Person Email:
Field Contact Person:
Field Contact Person Phone:

API No. 15-
Spot Description:
Sec. Twp. S. R.
feet from N / S Line of Section
feet from E / W Line of Section
GPS Location: Lat: , Long:
Datum: NAD27 NAD83 WGS84
County: Elevation: GL KB
Lease Name: Well #:
Well Type: (check one) Oil Gas OG WSW Other:
SWD Permit #: ENHR Permit #:
Gas Storage Permit #:
Spud Date: Date Shut-In:

Table with 7 columns: Conductor, Surface, Production, Intermediate, Liner, Tubing. Rows include Size, Setting Depth, Amount of Cement, Top of Cement, Bottom of Cement.

Casing Fluid Level from Surface: How Determined? Date:
Casing Squeeze(s): to w / sacks of cement, to w / sacks of cement. Date:
Do you have a valid Oil & Gas Lease? Yes No
Depth and Type: Junk in Hole at Tools in Hole at Casing Leaks: Yes No Depth of casing leak(s):
Type Completion: ALT. I ALT. II Depth of: DV Tool: w / sacks of cement Port Collar: w / sack of cement
Packer Type: Size: Inch Set at: Feet
Total Depth: Plug Back Depth: Plug Back Method:

Geological Date:

Table with 4 columns: Formation Name, Formation Top, Formation Base, Completion Information. Rows 1 and 2.

UNDER PENALTY OF PERJURY I HEREBY ATTEST THAT THE INFORMATION CONTAINED HEREIN IS TRUE AND CORRECT TO THE BEST OF MY KNOWLEDGE

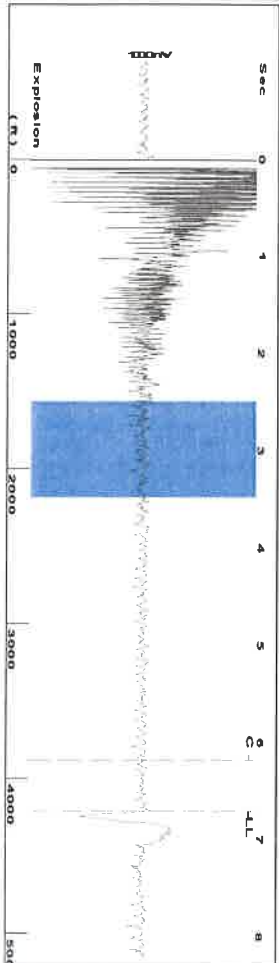
Submitted Electronically

Do NOT Write in This Space - KCC USE ONLY
Date Tested: Results: Date Plugged: Date Repaired: Date Put Back in Service:
Review Completed by: Comments:
TA Approved: Yes Denied Date:

Mail to the Appropriate KCC Conservation Office:

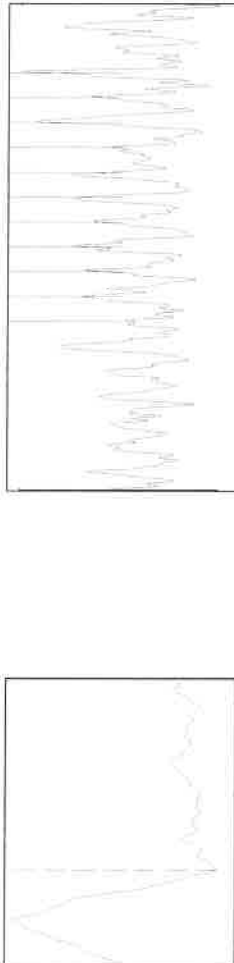
Table with 2 columns: Office Address, Phone. Rows for District Office #1, #2, #3, #4.

Group: CHK Well: WRIGHT B 2-35 (acquired on: 05/26/21 14:19:27)



Filter Type High Pass Automatic Collar Count Yes  
 Manual Acoustic Velocity 1238.28 ft/s Manual JTS/sec 19.5312  
 Time 6.703 sec  
 Joints 132.744 Jts  
 Depth 4207.98 ft

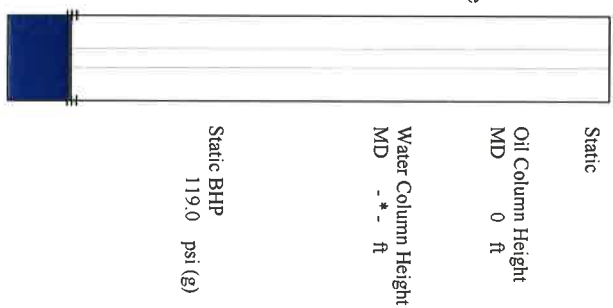
2.5 to 3.5 (Sec)



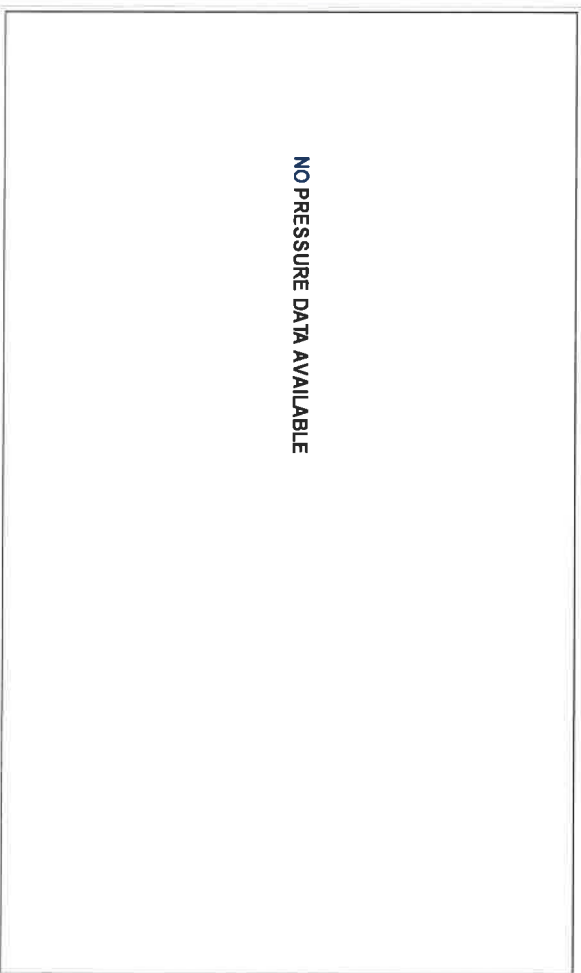
**Analysis Method: Automatic**

Group: CHK Well: WRIGHT B 2-35 (acquired on: 05/26/21 14:19:27)

Production	Potential	Casing Pressure	Static
Current	Oil - * -	105.8 psi (g)	Oil Column Height
Water - * -	Water - * -	Casing Pressure Buildup	MD 0 ft
Gas - * -	Gas - * -	0.2 psi	
		0.50 min	
IPR Method	Vogel	Gas/Liquid Interface Pressure	
PBHP/SBHP	- * -	119.1 psi (g)	
Production Efficiency	0.0		
Oil 40 deg API		Liquid Level Depth	Water Column Height
Water 1.05 Sp.Gr.H2O		4207.98 ft	MD - * - ft
Gas 0.74 Sp.Gr.AIR		Pump Intake Depth	
		4180.00 ft	
Acoustic Velocity	1255.55 ft/s	Formation Depth	
		4176.00 ft	

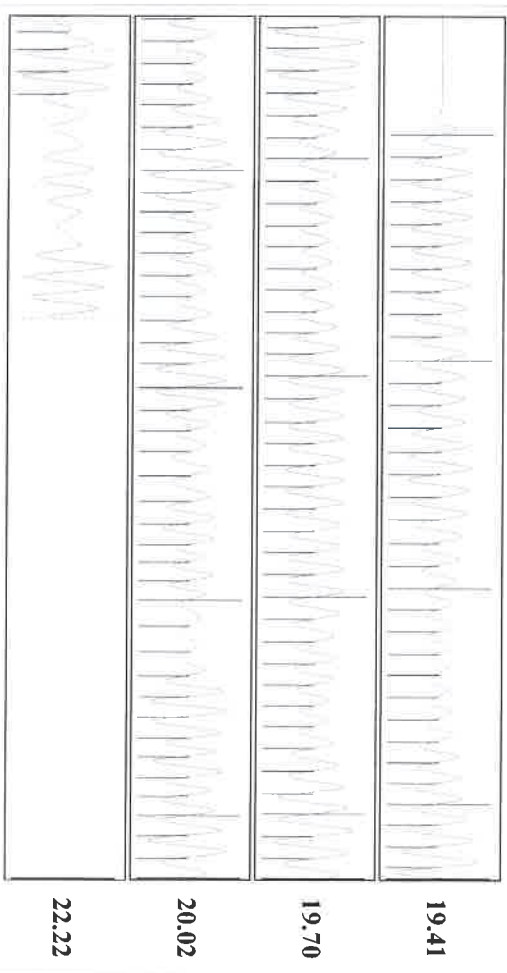


Group: CHK Well: WRIGHT B 2-35 (acquired on: 05/26/21 14:19:27)



Change in Pressure 0.00 psi PT14020  
 Change in Time 0.00 min Range

Group: CHK Well: WRIGHT B 2-35 (acquired on: 05/26/21 14:19:27)



Acoustic Velocity	1255.55 ft/s	Joints counted	117
Joints Per Second	19.8037 Jts/sec	Joints to liquid level	132.744
Depth to liquid level	4207.98 ft	Filter Width	17.5312
Automatic Collar Count	Yes	Time to 1st Collar	0.272

Conservation Division  
District Office No. 2  
3450 N. Rock Road  
Building 600, Suite 601  
Wichita, KS 67226



Phone: 316-337-7400  
Fax: 316-630-4005  
<http://kcc.ks.gov/>

Andrew J. French, Chairperson  
Dwight D. Keen, Commissioner  
Susan K. Duffy, Commissioner

Laura Kelly, Governor

May 28, 2021

BRIAN J MCCOY  
Edison Operating Company LLC  
8100 E. 22ND ST. N., BLDG 1900  
WICHITA, KS 67226-2319

Re: Temporary Abandonment  
API 15-095-19020-00-00  
WRIGHT B 2-35  
NE/4 Sec.35-29S-09W  
Kingman County, Kansas

Dear BRIAN J MCCOY:

"Your temporary abandonment (TA) application for the well listed above has been approved. In accordance with K.A.R. 82-3-111 the TA status of this well will expire 05/28/2022.

- \* If you return this well to service or plug it, please notify the District Office.
- \* If you sell this well you are required to file a Transfer of Operator form, T-1.
- \* If the well will remain temporarily abandoned, you must submit a new TA application, CP-111, before 05/28/2022.

You may contact me at the number above if you have questions.

Very truly yours,

Steve VanGieson"