



Liberal Yard #1717 - Phone 620-624-2277 - 1700 S. Country Estates Road, Liberal KS 67901

PRESSURE PUMPING

Job Log

Customer:	Merit Energy	Cement Pump No.:	38750, 19919 7.5Hrs.	Operator TRK No.:	96816	
Address:	sublette.invoices@meritenergy.com	Ticket #:	1718 19437 L	Bulk TRK No.:	27808, 19883 Jesse	14354, 19808 Santiago
City, State, Zip:	AFE# 63465	Job Type:	Z42 - Cement Surface Casing			
Service District:	1718 - Liberal, Ks.	Well Type:	OIL			
Well Name and No.:	Emma Ward # 2	Well Location:	35-27S-34W	County:	Haskell	State: Ks

Type of Cmt	Sacks	Additives	Truck Loaded On		
A-Con' Blend	520	3% Calcium Chloride, 1/4# Polyflake, 1# Gilsonite	27808, 19883 Jesse	Front	Back
Premium Plus Cement	165	2% Calcium Chloride, 1/4# Polyflake	14354, 19808 Santiago	Front	Back
				Front	Back

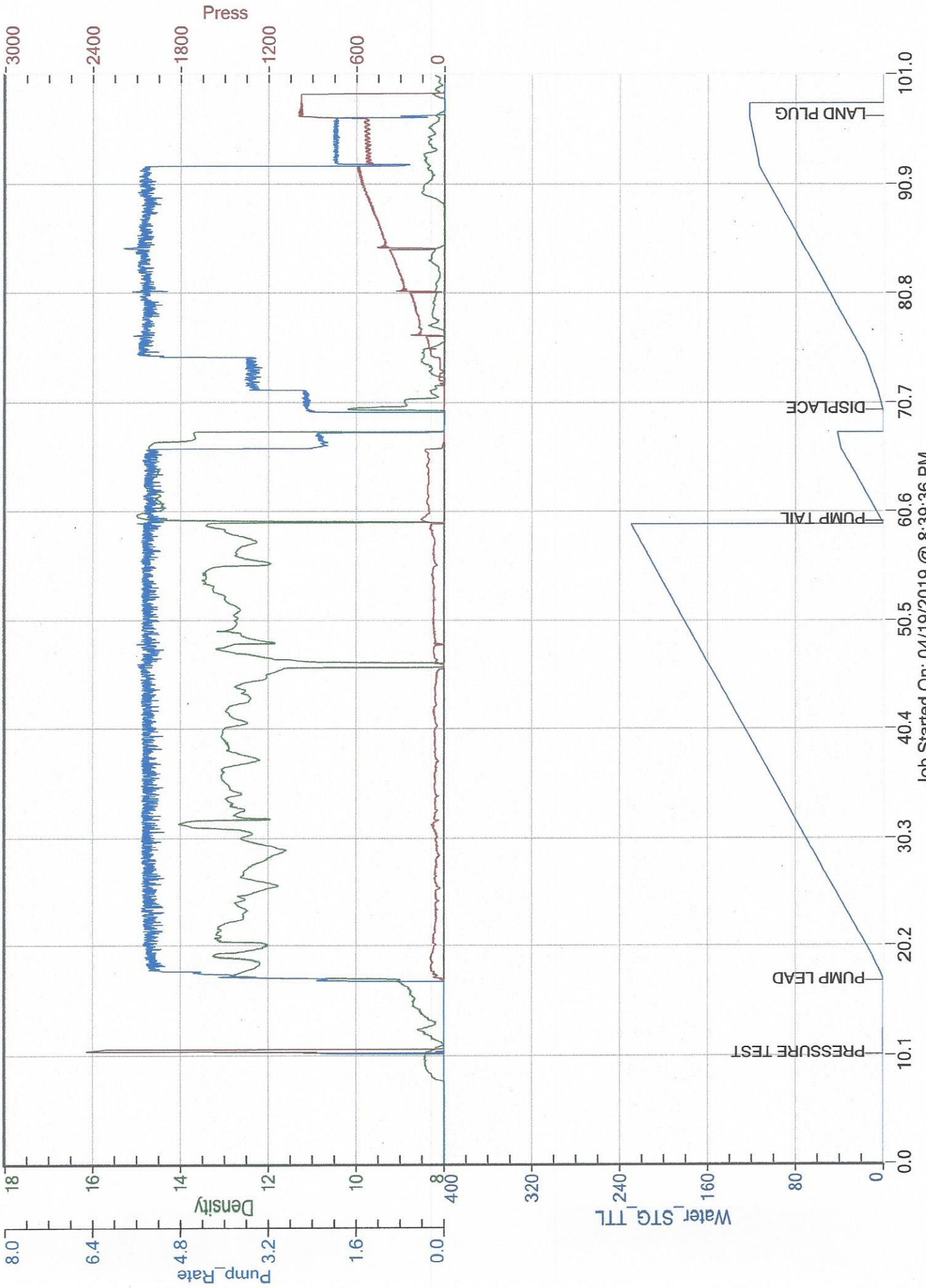
Lead / Tail:	Weight #1 Gal.	Cu/Ft/sk	Water Requirements	CU. FT.	Man Hours / Personnel	
Lead:	12.1	2.41	13.9	1253.2	TT Man Hours:	52
Tail:	14.8	1.34	6.33	221.1	# of Men on Job:	3

Time (am/pm)	(BPM)	Volume (BBLs)	Pumps		Pressure(Psi)		Description of Operation and Materials
			T	C	Tubing	Casing	
16:00							ON LOCATION
16:05							SAFETY MEETING
4:30 PM							RIG UP
8:15 PM							RIG TO CIRCULATE
8:45 PM							RIG TO PT
20:47							PRESSURE TEST TO 2400PSI
20:50	5.5	223.1 slurry				90	PUMP 520SX LEAD @ 12.1#
9:37 PM	5.3	39.3 slurry				100	PUMP 165SX TAIL @ 14.8#
21:45							SHUTDOWN / DROP PLUG
21:47	3.5	10				10	DISPLACE
	5.5	20				110	
	5.5	30				170	
	5.5	40				200	
	5.5	50				290	
	5.5	60				340	
	5.5	70				430	
	5.5	80				470	
	5.5	90				530	
22:10	5.4	103				590	SLOW RATE TO 2.0BPM @ 520PSI
	2	110				530	
22:15	2	113.8				530	LAND PLUG / PRESSURE UP TO 990PSI
22:17							RELEASE BACK --- FLOAT HELD
							JOB COMPLETE

Size Hole	12 1/4"	Depth	1837'		TYPE	Plug Container	
Size & Wt. Csg.	8 5/8" 24#	Depth	1832.17'	New / Used	DV Tool	Depth	
Landing Press.	414.5psi				Retainer	Depth	
Shoe Jt.	41.35'	Type			Perfs	CIBP	

Customer Signature:	Basic Representative:	Daniel Beck
	Basic Signature:	<i>Daniel Beck</i>
	Date of Service:	4/19/2019

Merit Energy
Emma Ward #2



Job Started On: 04/19/2019 @ 8:39:36 PM