



Home  
(785) 798-2400

# Andrew Stenzel Geologist

Ness City, Kansas



Cell  
(785) 798-5977

Scale 1:240 (5"=100') Imperial  
Measured Depth Log

Well Name: Revilo #3  
API: 15-195-23086-00-00  
Location: NE-NW-SW-SW Sec. 7-15S-25W (Trego County)  
License Number: 30742  
Spud Date: 4/18/19  
Surface Coordinates: 1284' FSL & 418' FWL  
Region: KANSAS  
Drilling Completed: 4/25/19

Bottom Hole  
Coordinates:  
Ground Elevation (ft): 2339  
Logged Interval (ft): 3500 To: TD  
Formation: MISSISSIPPI  
Type of Drilling Fluid: Mud-Co Chemical  
K.B. Elevation (ft): 2344  
Total Depth (ft): 4370

Printed by MudLog from WellSight Systems 1-800-447-1534 [www.WellSight.com](http://www.WellSight.com)

## OPERATOR

Company: Palomino Petroleum, Inc.  
Address: 4924 SE 84th St.  
Newton, KS 67114

## GEOLOGIST

Name: Andrew Stenzel  
Company: Petroleum Geologist  
Address: 501 S. Franklin  
Ness City, KS 67560

## Drilling Report

### DAILY DRILLING REPORT:

4/18/19 MIRU, ran surface casing  
4/19/19 Drilling @ 209'  
4/20/19 Drilling @ 2180'  
4/21/19 Drilling @ 3140'  
4/22/19 Drilling @ 3805'  
4/23/19 DST #1  
4/24/19 DST #2, ran electric logs  
4/25/19 Ran production casing

### Services

RIG: WW Drilling, rig #2

MUD: MUDCO

LOGS: Gemini Wireline; CNDL, PE, DIL, ML

### Casing Record

SURFACE Casing: Ran 5 jts new 8 5/8", 23# casing set at 209'

PRODUCTION Casing: Ran 105 jts new 5 1/2", 14# casng set at 4369'

### Formation Tops

Sample Tops		LogTops	
Anhy.	1797 (+547)	Anhy.	1796 (+548)
Base Anhy.	1838 (+506)	Base Anhy.	1820 (+524)
Heebner	3612 (-1268)	Heebner	3613 (-1269)
Lansing	3651 (-1307)	Lansing	3653 (-1309)
Stark Sh	3884 (-1540)	Stark Sh	3884 (-1540)
BKC	3943 (-1599)	BKC	3936 (-1592)
Pawnee	4079 (-1735)	Pawnee	4076 (-1732)
Ft. Scott	4143 (-1799)	Ft. Scott	4143 (-1799)
Cher. Sh.	4169 (-1825)	Cher. Sh.	4169 (-1825)
Miss.	4238 (-1894)	Miss.	4241 (-1897)
RTD	4370 (-2026)	LTD	4371 (-2027)



**TRILOBITE  
TESTING, INC.**

## DRILL STEM TEST REPORT

Palomino Petroleum

**7-15s-25w Trego,KS**

4924 SE 84th St  
New ton, KS 67114

**Reviso #3**

Job Ticket: 65172

**DST#: 1**

ATTN: Andrew Stenzel

Test Start: 2019.04.22 @ 21:29:11

### GENERAL INFORMATION:

Formation: **Lower LKC**

Deviated: No Whipstock: ft (KB)

Time Tool Opened: 23:25:41

Time Test Ended: 03:24:11

Test Type: Conventional Bottom Hole (Initial)

Tester: Brandon Turley

Unit No: 79

Interval: **3802.00 ft (KB) To 3954.00 ft (KB) (TVD)**

Reference Elevations: 2344.00 ft (KB)

Total Depth: 3954.00 ft (KB) (TVD)

2339.00 ft (CF)

Hole Diameter: 7.88 inches Hole Condition: Fair

KB to GR/CF: 5.00 ft

**Serial #: 8166**

**Outside**

Press@RunDepth: 63.50 psig @ 3803.00 ft (KB)

Capacity: 8000.00 psig

Start Date: 2019.04.22

End Date:

2019.04.23

Last Calib.: 2019.04.23

Start Time: 21:29:16

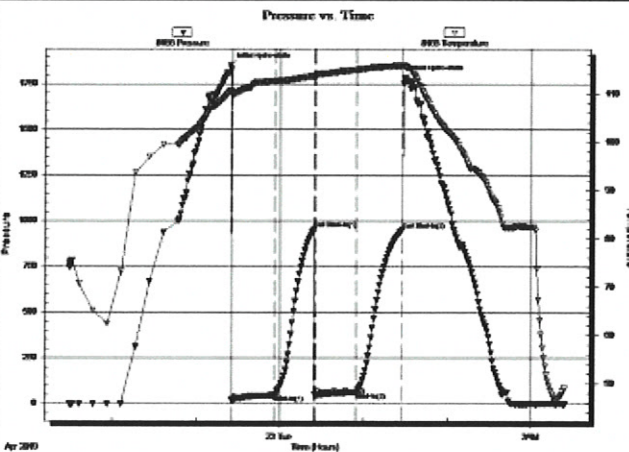
End Time:

03:24:10

Time On Btm: 2019.04.22 @ 23:24:41

Time Off Btm: 2019.04.23 @ 01:28:41

**TEST COMMENT:** IF: 1" blow built to 7".  
IS: No return.  
FF: 1/2" blow built to 9".  
FS: No return.



### PRESSURE SUMMARY

Time (Mn.)	Pressure (psig)	Temp (deg F)	Annotation
0	1851.69	110.45	Initial Hydro-static
1	21.44	109.56	Open To Flow (1)
32	47.33	112.55	Shut-in(1)
60	955.50	113.63	End Shut-in(1)
61	46.98	113.76	Open To Flow (2)
90	63.50	114.94	Shut-in(2)
123	952.63	115.77	End Shut-in(2)
124	1784.48	115.86	Final Hydro-static

### Recovery

Length (ft)	Description	Volume (bbl)
60.00	gocw m 10%g 40%o 10%w 40%m	0.30
60.00	ocm 10%o 90%m	0.30
1.00	free oil 100%o	0.01
0.00	126 GIP	0.00

### Gas Rates

	Choke (inches)	Pressure (psig)	Gas Rate (Mcf/d)





**TRILOBITE TESTING, INC.**

## DRILL STEM TEST REPORT

Palomino Petroleum

**7-15s-25w Trego, KS**

4924 SE 84th St  
Newton, KS 67114

**Revilo #3**

Job Ticket: 65173

**DST#: 2**

ATTN: Andrew Stenzel

Test Start: 2019.04.24 @ 07:20:02

### GENERAL INFORMATION:

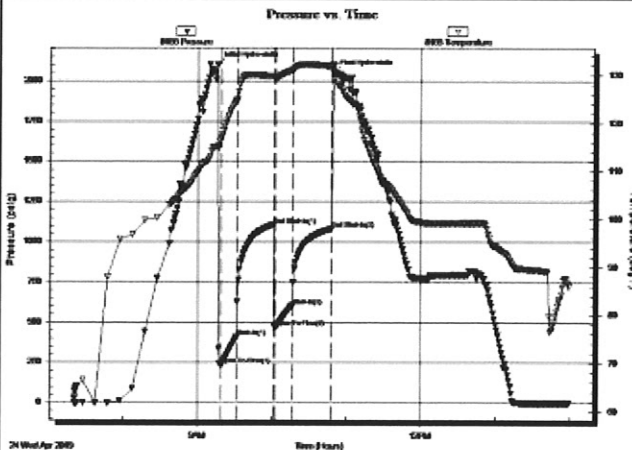
Formation: **Miss**  
 Deviated: No Whipstock: ft (KB)  
 Time Tool Opened: 09:19:02  
 Time Test Ended: 13:59:32  
 Interval: **4242.00 ft (KB) To 4283.00 ft (KB) (TVD)**  
 Total Depth: 4283.00 ft (KB) (TVD)  
 Hole Diameter: 7.88 inches Hole Condition: Fair  
 Test Type: Conventional Bottom Hole (Reset)  
 Tester: Brandon Turley  
 Unit No: 79  
 Reference Elevations: 2344.00 ft (KB)  
 2339.00 ft (CF)  
 KB to GR/CF: 5.00 ft

### Serial #: 8166

### Outside

Press@RunDepth: 604.25 psig @ 4243.00 ft (KB) Capacity: 8000.00 psig  
 Start Date: 2019.04.24 End Date: 2019.04.24 Last Callb.: 2019.04.24  
 Start Time: 07:20:07 End Time: 13:59:31 Time On Btm: 2019.04.24 @ 09:16:32  
 Time Off Btm: 2019.04.24 @ 10:49:02

**TEST COMMENT:** IF: BOB in 30 sec. 156"  
 IS: BOB in 7 min. 30"  
 FF: BOB in 1 min. 80"  
 FS: BOB in 10 min. 13"



### PRESSURE SUMMARY

Time (Min.)	Pressure (psig)	Temp (deg F)	Annotation
0	2101.71	115.19	Initial Hydro-static
3	237.37	116.85	Open To Flow (1)
15	408.18	124.73	Shut-in(1)
45	1106.00	129.82	End Shut-in(1)
46	468.87	129.57	Open To Flow (2)
60	604.25	131.08	Shut-in(2)
92	1080.97	131.87	End Shut-in(2)
93	2051.66	132.25	Final Hydro-static

### Recovery

Length (ft)	Description	Volume (bbl)
119.00	gocm 40%g 10%o 50%a	0.59
1539.00	go 10%g 90%o	21.59
0.00	1240 GIP	0.00

\* Recovery from multiple tests

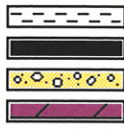
### Gas Rates

Choke (inches)	Pressure (psig)	Gas Rate (Mcf/d)

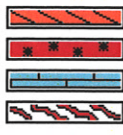
**ROCK TYPES**



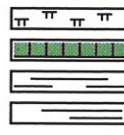
Anhy  
Bent  
Brec  
Cht



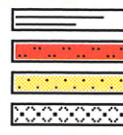
Clyst  
Carb shale  
Congl  
Dol



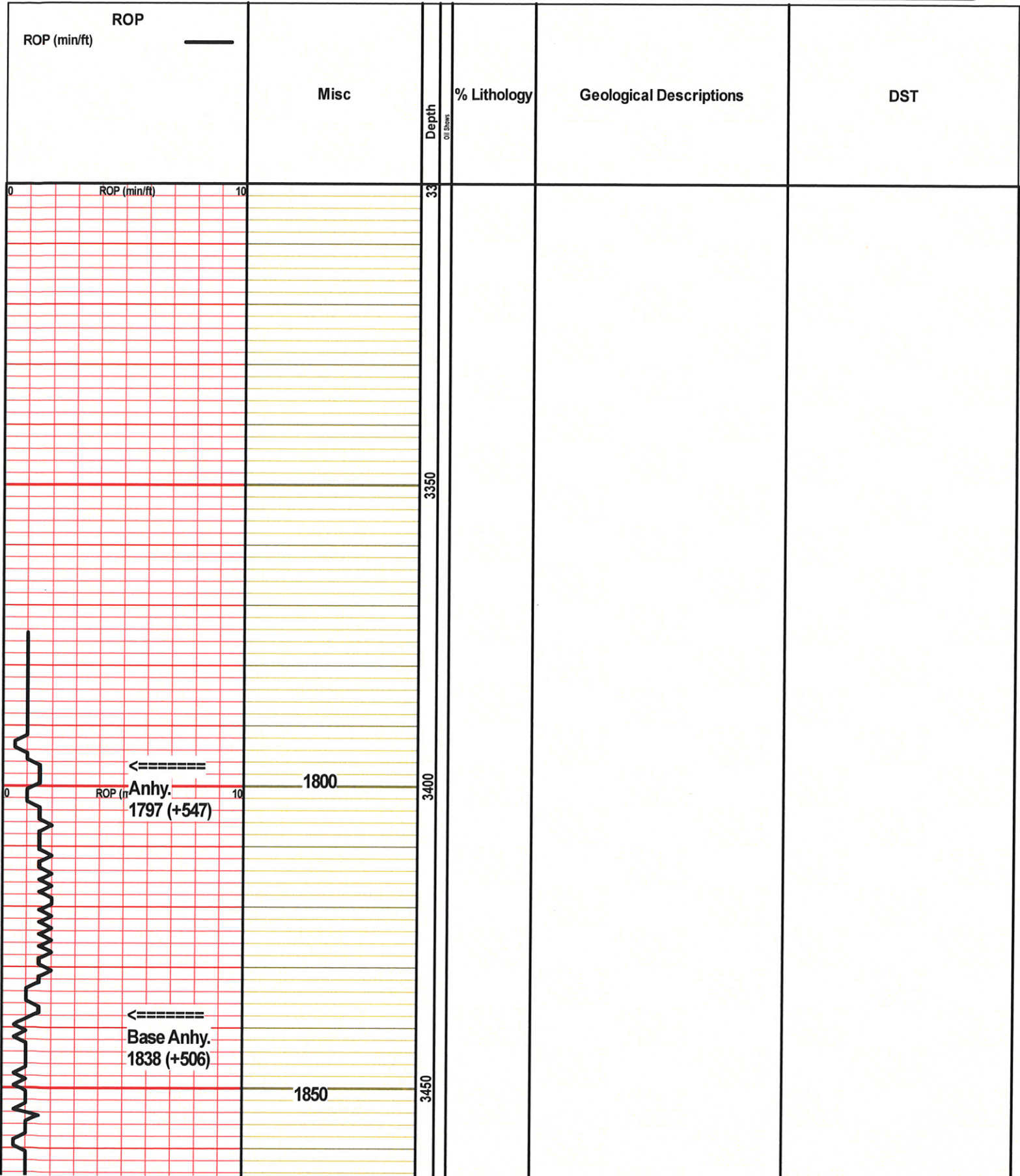
Gyp  
Igne  
Lmst  
Meta



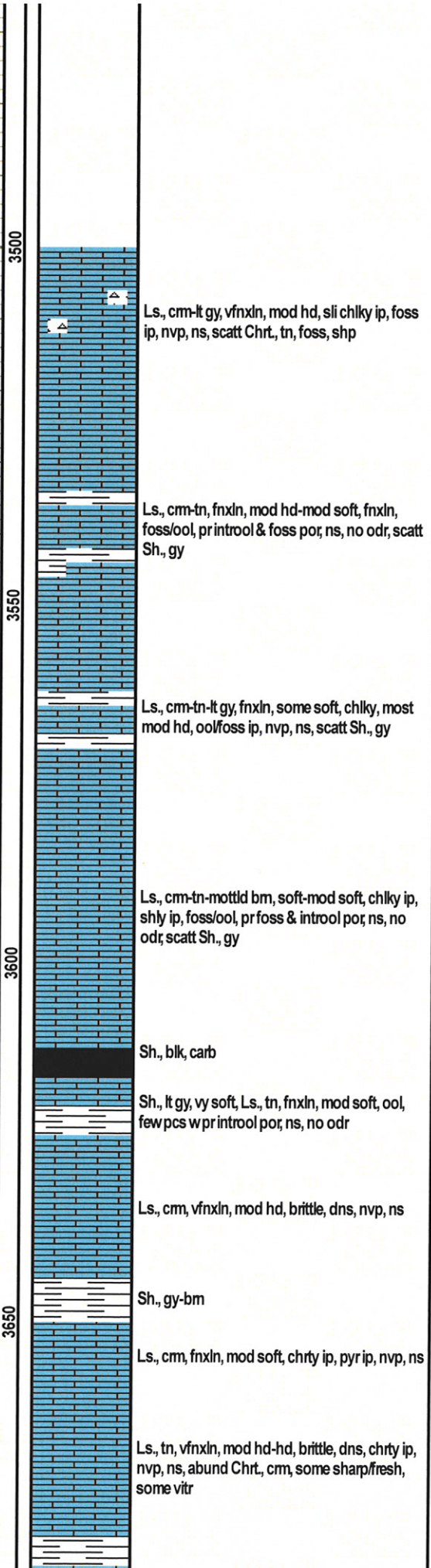
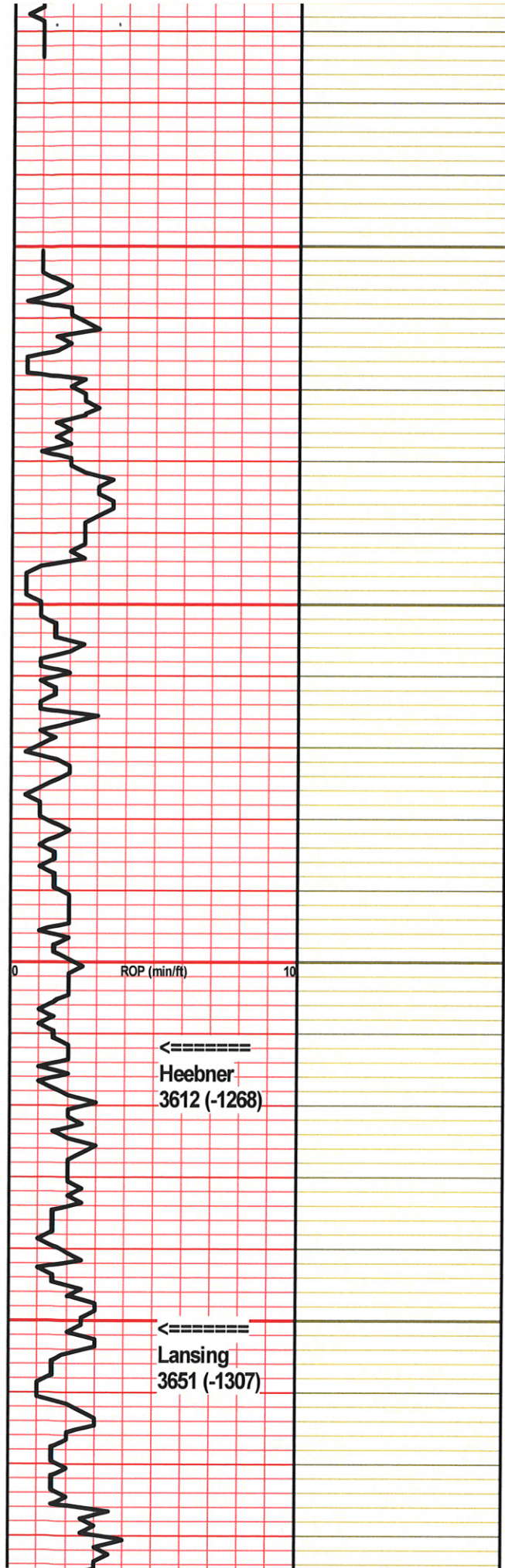
Mrlst  
Salt  
Shale  
Shcol



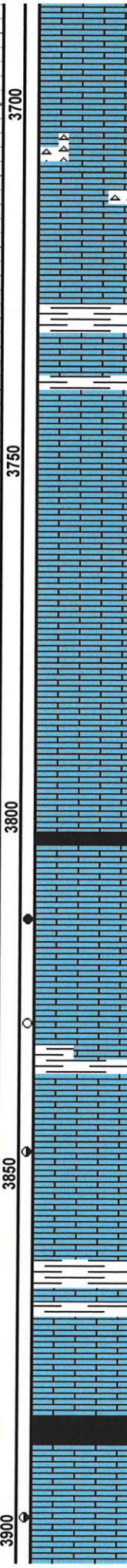
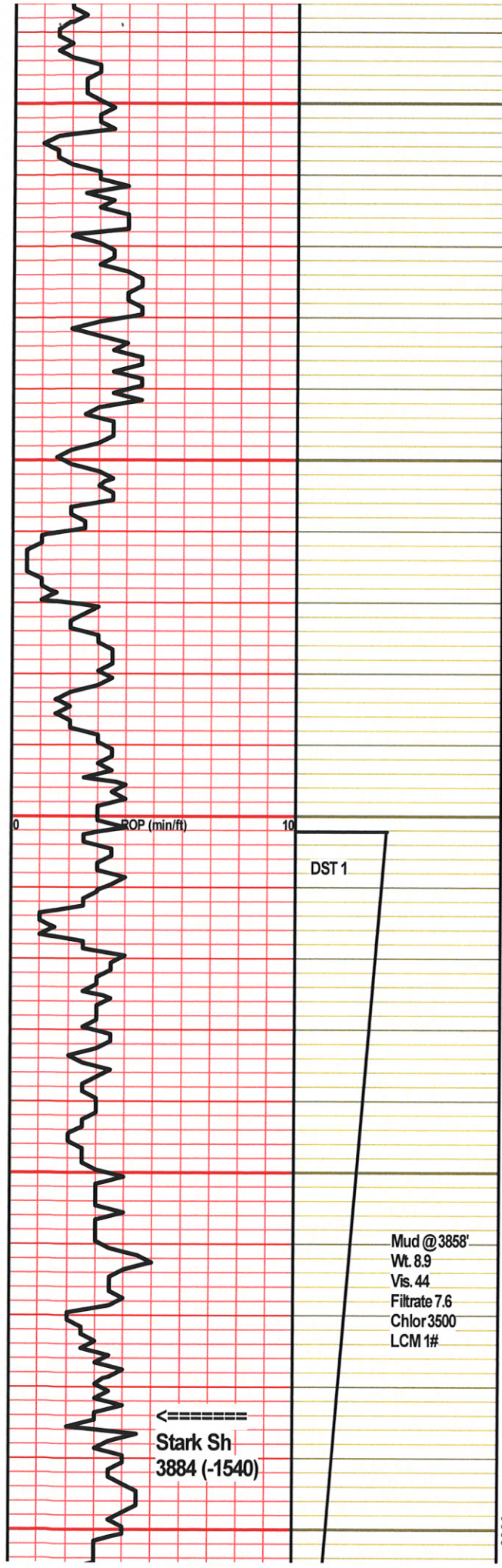
Shgy  
Sltst  
Ss  
Till











Sh., gy-dk gy, soft, Ls., cm-tn, vfnxn, mod hd-hd, foss ip, nvp, ns

Ls., cm-buff, fnxn, mod hd, ool ip, fewwpr introol por, ns, no odr, scatt Chrt., org, weath

Ls., cm-lt gy, vfnxn, mod hd-hd, sli chlky ip, foss ip, nvp, ns, scatt Sh., gy-bm

Ls., cm, fnxn, mod hd-mod soft ip, brittle, ool ip, rare vy pr introol por, ns, no odr

Ls., tn, fnxn, mod hd, ool, fr ooc por, ns, no odr

Ls., cm-lt gy, vfnxn, mod hd, sli chlky ip, ool/foss ip, nvp, ns

Sh., blk, carb

Ls., cm, fnxn, sli soft, ool, pr-rare fr introol por, GSFO, bm stn in por, sli showgas, gd odr

Ls., cm-tn, fnxn, mod hd-hd, pyr ip, ool ip, some wvy pr introol & rare iso vug por, SSFO, bm spot stn, wk odr, scatt Sh., gy-bm

Ls., cm-tn, fnxn, mod hd, ool ip, scatt pcs wpr introol & rare pr-fr vug por, FSFO, bm spot stn in por, wk cup odr, fr odr on brk

Sh., bm-gy, soft, Ls., cm-lt gy, vfnxn, mod hd, ool ip, nvp, ns, no odr

Ls., cm-lt gy, fn-vfnxn, mod hd, ool ip, fewwpr ooc por, ns, no odr or fluoro

Sh., blk, carb

Ls., cm-tn, fnxn, mod hd, sli dol ip, ool ip, occ pr intrxn & introol por, FSFO, bm sub sat-sat stn, sli showgas, fr odr

**DST #1 3802-3954 (Lower LKC)**  
 30-30-30-30  
 IF: 1" blow, built to 7"  
 IS: No blow  
 FF: 1/2" blow, built to 9"  
 FS: No blow

Recovery:  
 126' GIP  
 1' FO (100%O)  
 60' OCM (10%O, 90%M)  
 60' GOCWM (10%G, 40%O, 10%W, 40%M)

121' TF

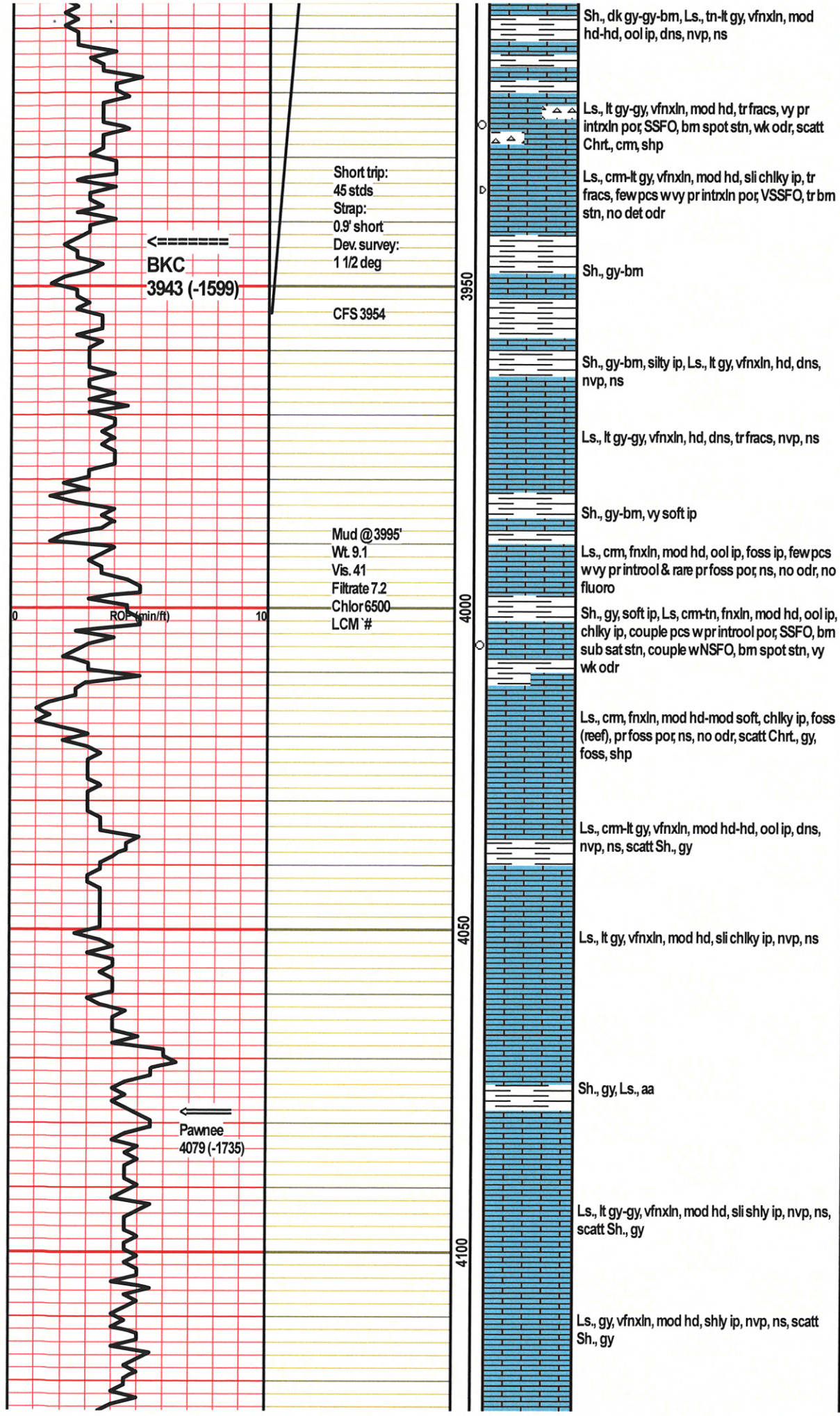
FP: 21-47; 46-63  
 SIP: 955-952  
 HP: 1851-1784

BHT: 115  
 Gravity: --  
 Chlor: ---

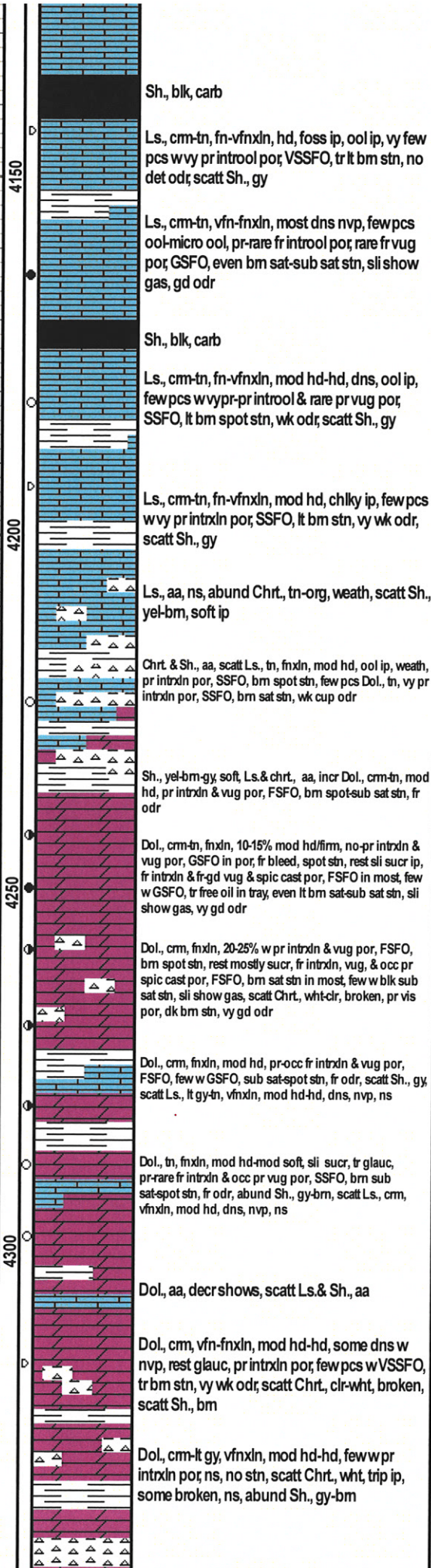
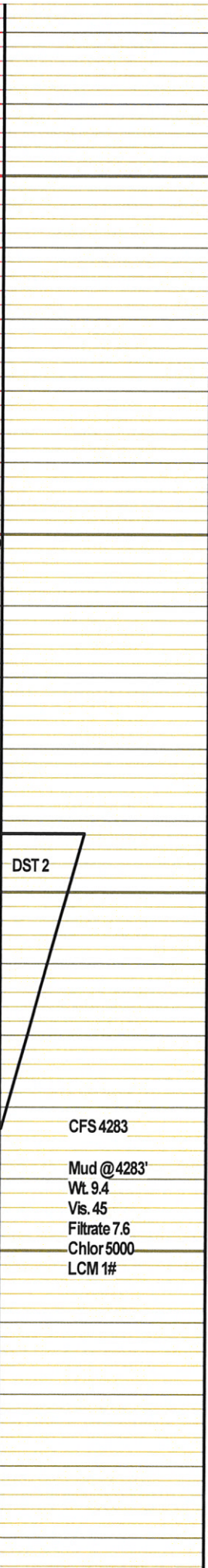
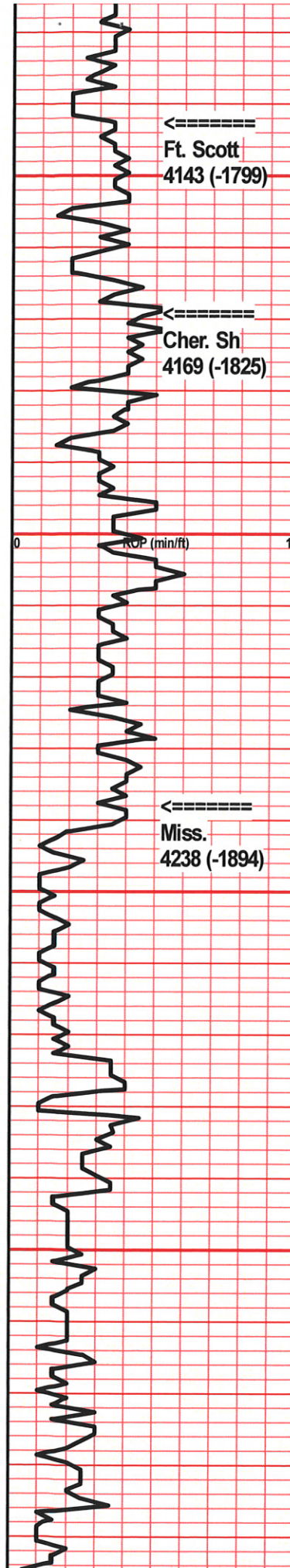
Mud @ 3858'  
 Wt. 8.9  
 Vis. 44  
 Filtrate 7.6  
 Chlor 3500  
 LCM 1#

←===== Stark Sh  
 3884 (-1540)









**DST #2 4242-4283 (Mississippi)**

15-30-15-30  
IF: BOB in 30 sec, built to 154"  
IS: BOB in 7 min, built to 30"  
FF: BOB in 1 min, built to 80"  
FS: BOB in 10 min, built to 13"

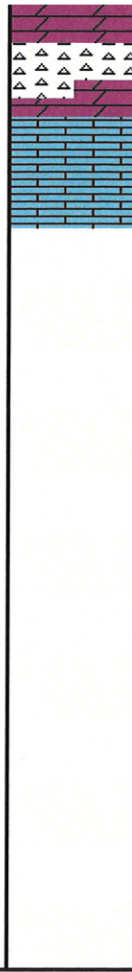
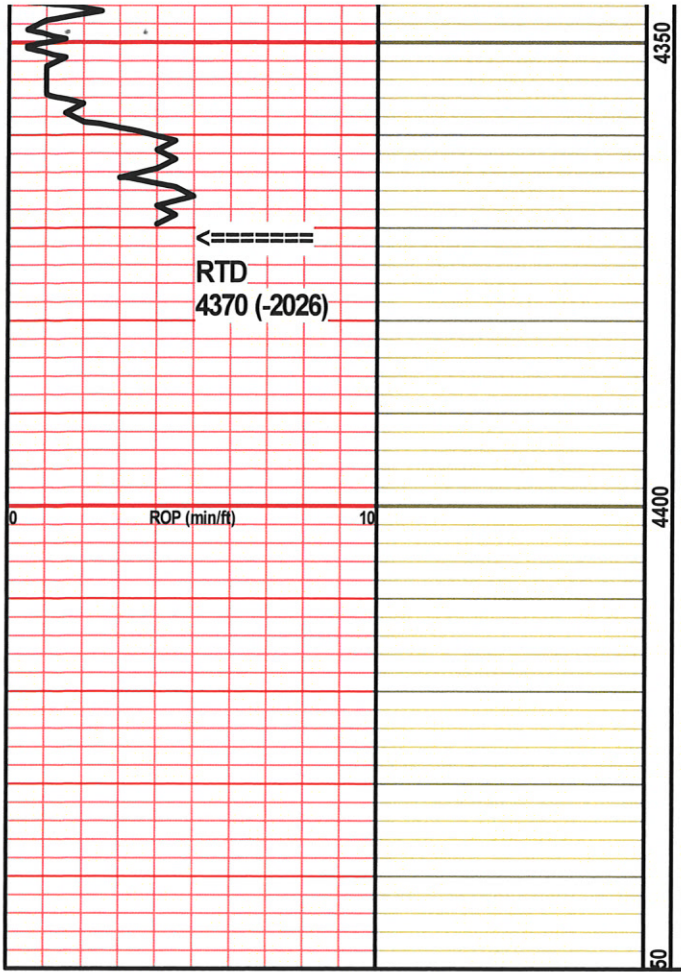
Recovery:  
1240' GIP  
1539' GO (10%G, 90%O)  
119' GOCM (40%G, 10%, 50%M)

1658' TF

FP: 237-408; 468-604  
SIP: 1106-1080  
HP: 2101-2051

BHT: 131  
Gravity: 38  
Chlor: ---





od; abund Chrt, wht, fresh, few pcs trip, ns

Ls., tn-lt bm, vnfxlh, hd, dns, nvp, ns