

KANSAS CORPORATION COMMISSION
OIL & GAS CONSERVATION DIVISION

TEMPORARY ABANDONMENT WELL APPLICATION

OPERATOR: License# \_\_\_\_\_
Name: \_\_\_\_\_
Address 1: \_\_\_\_\_
Address 2: \_\_\_\_\_
City: \_\_\_\_\_ State: \_\_\_\_\_ Zip: \_\_\_\_\_ + \_\_\_\_\_
Contact Person: \_\_\_\_\_
Phone:( \_\_\_\_\_ ) \_\_\_\_\_
Contact Person Email: \_\_\_\_\_
Field Contact Person: \_\_\_\_\_
Field Contact Person Phone: ( \_\_\_\_\_ ) \_\_\_\_\_

API No. 15- \_\_\_\_\_
Spot Description: \_\_\_\_\_
- - - - - Sec. \_\_\_\_\_ Twp. \_\_\_\_\_ S. R. \_\_\_\_\_  E  W
\_\_\_\_\_ feet from  N /  S Line of Section
\_\_\_\_\_ feet from  E /  W Line of Section
GPS Location: Lat: \_\_\_\_\_, Long: \_\_\_\_\_
Datum:  NAD27  NAD83  WGS84
County: \_\_\_\_\_ Elevation: \_\_\_\_\_  GL  KB
Lease Name: \_\_\_\_\_ Well #: \_\_\_\_\_
Well Type: (check one)  Oil  Gas  OG  WSW  Other: \_\_\_\_\_
 SWD Permit #: \_\_\_\_\_  ENHR Permit #: \_\_\_\_\_
 Gas Storage Permit #: \_\_\_\_\_
Spud Date: \_\_\_\_\_ Date Shut-In: \_\_\_\_\_

Table with 7 columns: Conductor, Surface, Production, Intermediate, Liner, Tubing. Rows include Size, Setting Depth, Amount of Cement, Top of Cement, Bottom of Cement.

Casing Fluid Level from Surface: \_\_\_\_\_ How Determined? \_\_\_\_\_ Date: \_\_\_\_\_
Casing Squeeze(s): \_\_\_\_\_ to \_\_\_\_\_ w / \_\_\_\_\_ sacks of cement, \_\_\_\_\_ to \_\_\_\_\_ w / \_\_\_\_\_ sacks of cement. Date: \_\_\_\_\_
Do you have a valid Oil & Gas Lease?  Yes  No
Depth and Type:  Junk in Hole at \_\_\_\_\_  Tools in Hole at \_\_\_\_\_ Casing Leaks:  Yes  No Depth of casing leak(s): \_\_\_\_\_
Type Completion:  ALT. I  ALT. II Depth of:  DV Tool: \_\_\_\_\_ w / \_\_\_\_\_ sacks of cement  Port Collar: \_\_\_\_\_ w / \_\_\_\_\_ sack of cement
Packer Type: \_\_\_\_\_ Size: \_\_\_\_\_ Inch Set at: \_\_\_\_\_ Feet
Total Depth: \_\_\_\_\_ Plug Back Depth: \_\_\_\_\_ Plug Back Method: \_\_\_\_\_

Geological Data:

Table with 4 columns: Formation Name, Formation Top, Formation Base, Completion Information. Rows 1 and 2.

UNDER PENALTY OF PERJURY I HEREBY ATTEST THAT THE INFORMATION CONTAINED HEREIN IS TRUE AND CORRECT TO THE BEST OF MY KNOWLEDGE

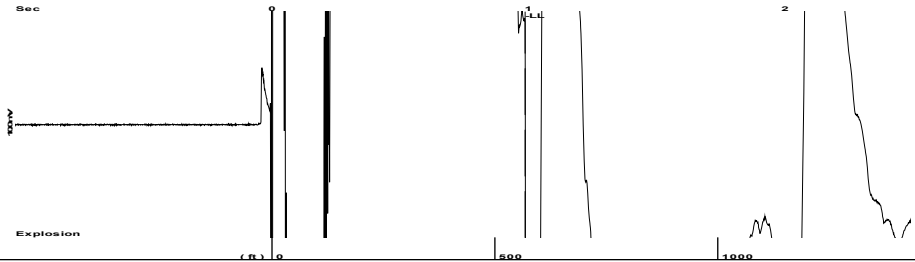
Submitted Electronically

Do NOT Write in This Space - KCC USE ONLY
Date Tested: \_\_\_\_\_ Results: \_\_\_\_\_ Date Plugged: \_\_\_\_\_ Date Repaired: \_\_\_\_\_ Date Put Back in Service: \_\_\_\_\_
Review Completed by: \_\_\_\_\_ Comments: \_\_\_\_\_
TA Approved:  Yes  Denied Date: \_\_\_\_\_

Mail to the Appropriate KCC Conservation Office:

Table with 3 columns: District Office, Address, Phone. Rows for District Office #1, #2, #3, #4.

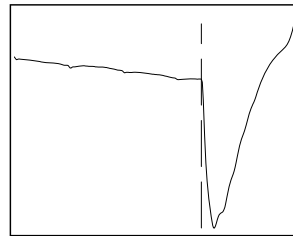
Group: MyWells Well: Finney 1-77 (acquired on: 05/25/21 12:08:08 )



Time 0.987 sec  
 Joints 18.1029 Jts  
 Depth 567.52 ft

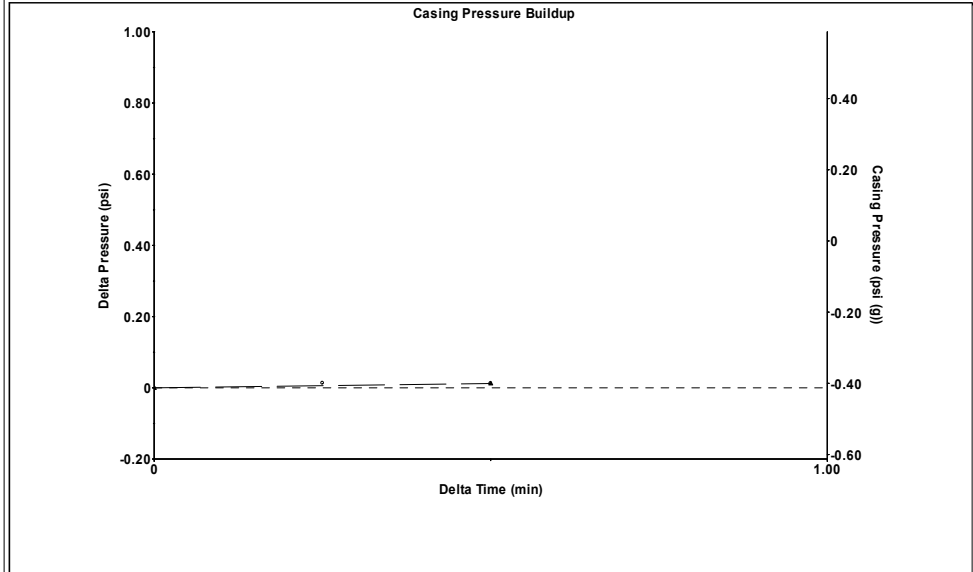
Liquid level calculated with user supplied Acoustic Velocity

Acoustic Velocity 1150 ft/s



**Analysis Method: Acoustic Velocity**

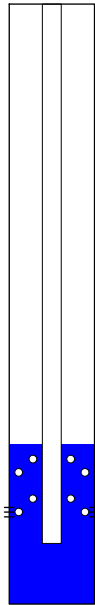
Group: MyWells Well: Finney 1-77 (acquired on: 05/25/21 12:08:08 )



Change in Pressure 0.01 psi PT 12849  
 Change in Time 0.50 min Range 0 - ? psi

Group: MyWells Well: Finney 1-77 (acquired on: 05/25/21 12:08:08 )

|                                      |              |                               |                  |
|--------------------------------------|--------------|-------------------------------|------------------|
| Production Current                   | Potential    | Casing Pressure               | Producing        |
| Oil 0                                | - * - BBL/D  | -0.4 psi (g)                  |                  |
| Water 18                             | - * - BBL/D  | Casing Pressure Buildup       | Annular Gas Flow |
| Gas - * -                            | - * - Mscf/D | 0.012 psi                     | 0 Mscf/D         |
|                                      |              | 0.50 min                      | % Liquid         |
| IPR Method                           | Vogel        | Gas/Liquid Interface Pressure | 100 %            |
| PBHP/SBHP                            | - * -        | -0.2 psi (g)                  |                  |
| Production Efficiency                | 0.0          |                               |                  |
|                                      |              | Liquid Level Depth            |                  |
| Oil 40 deg.API                       |              | 567.52 ft                     |                  |
| Water 1.05 Sp.Gr.H2O                 |              | Pump Intake Depth             |                  |
| Gas 0.85 Sp.Gr.AIR                   |              | 721.00 ft                     |                  |
| Acoustic Velocity                    | 1150 ft/s    | Formation Depth               |                  |
|                                      |              | 674.00 ft                     |                  |
|                                      |              |                               | Pump Intake      |
| Formation Submergence                |              |                               | 69.6 psi (g)     |
| Total Gaseous Liquid Column HT (TVD) | 153 ft       |                               | Producing BHP    |
| Equivalent Gas Free Liquid HT (TVD)  | 153 ft       |                               | 48.2 psi (g)     |
|                                      |              |                               | Static BHP       |
| Acoustic Test                        |              |                               | 35.0 psi (g)     |



Group: MyWells Well: Finney 1-77 (acquired on: 05/25/21 12:08:08 )

**Entered Acoustic Velocity for Liquid Level depth determination**

June 01, 2021

Michelle Henning  
Vess Oil Corporation  
1700 WATERFRONT PKWY BLDG 500  
WICHITA, KS 67206-6619

Re: Temporary Abandonment  
API 15-015-22340-00-01  
FINNEY I 77  
SW/4 Sec.29-25S-05E  
Butler County, Kansas

Dear Michelle Henning:

"Your temporary abandonment (TA) application for the well listed above has been approved. In accordance with K.A.R. 82-3-111 the TA status of this well will expire 06/01/2022.

- \* If you return this well to service or plug it, please notify the District Office.
- \* If you sell this well you are required to file a Transfer of Operator form, T-1.
- \* If the well will remain temporarily abandoned, you must submit a new TA application, CP-111, before 06/01/2022.

You may contact me at the number above if you have questions.

Very truly yours,

Neal Rupp ECRS"