

KANSAS CORPORATION COMMISSION
OIL & GAS CONSERVATION DIVISION

TEMPORARY ABANDONMENT WELL APPLICATION

OPERATOR: License# _____
 Name: _____
 Address 1: _____
 Address 2: _____
 City: _____ State: _____ Zip: _____ + _____
 Contact Person: _____
 Phone:(_____) _____
 Contact Person Email: _____
 Field Contact Person: _____
 Field Contact Person Phone: (_____) _____

API No. 15- _____
 Spot Description: _____
 _____ - _____ - _____ - _____ Sec. _____ Twp. _____ S. R. _____ E W
 _____ feet from N / S Line of Section
 _____ feet from E / W Line of Section
 GPS Location: Lat: _____, Long: _____
(e.g. xx.xxxxx) (e.g. -xxx.xxxxx)
 Datum: NAD27 NAD83 WGS84
 County: _____ Elevation: _____ GL KB
 Lease Name: _____ Well #: _____
 Well Type: (check one) Oil Gas OG WSW Other: _____
 SWD Permit #: _____ ENHR Permit #: _____
 Gas Storage Permit #: _____
 Spud Date: _____ Date Shut-In: _____

	Conductor	Surface	Production	Intermediate	Liner	Tubing
Size						
Setting Depth						
Amount of Cement						
Top of Cement						
Bottom of Cement						

Casing Fluid Level from Surface: _____ How Determined? _____ Date: _____
 Casing Squeeze(s): _____ to _____ w / _____ sacks of cement, _____ to _____ w / _____ sacks of cement. Date: _____
(top) (bottom) (top) (bottom)
 Do you have a valid Oil & Gas Lease? Yes No
 Depth and Type: Junk in Hole at _____ Tools in Hole at _____ Casing Leaks: Yes No Depth of casing leak(s): _____
(depth) (depth)
 Type Completion: ALT. I ALT. II Depth of: DV Tool: _____ w / _____ sacks of cement Port Collar: _____ w / _____ sack of cement
(depth) (depth)
 Packer Type: _____ Size: _____ Inch Set at: _____ Feet
 Total Depth: _____ Plug Back Depth: _____ Plug Back Method: _____

Geological Data:

Formation Name	Formation Top	Formation Base	Completion Information
1. _____	At: _____	to _____ Feet	Perforation Interval _____ to _____ Feet or Open Hole Interval _____ to _____ Feet
2. _____	At: _____	to _____ Feet	Perforation Interval _____ to _____ Feet or Open Hole Interval _____ to _____ Feet

UNDER PENALTY OF PERJURY I HEREBY ATTEST THAT THE INFORMATION CONTAINED HEREIN IS TRUE AND CORRECT TO THE BEST OF MY KNOWLEDGE

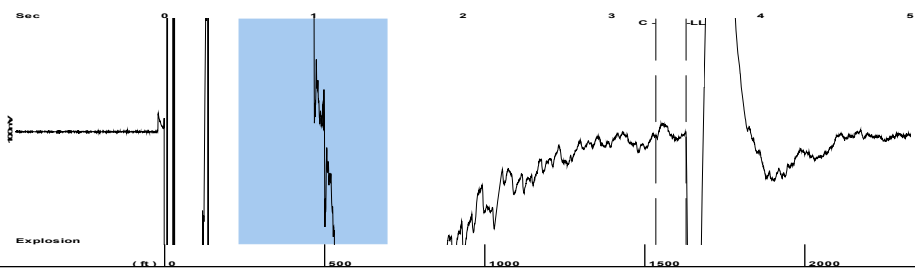
Submitted Electronically

Do NOT Write in This Space - KCC USE ONLY	Date Tested: _____	Results: _____	Date Plugged: _____	Date Repaired: _____	Date Put Back in Service: _____
	Review Completed by: _____ Comments: _____				
TA Approved: <input type="checkbox"/> Yes <input type="checkbox"/> Denied Date: _____					

Mail to the Appropriate KCC Conservation Office:

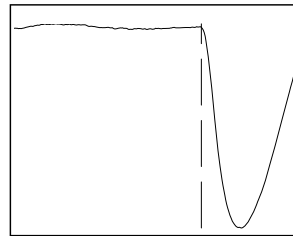
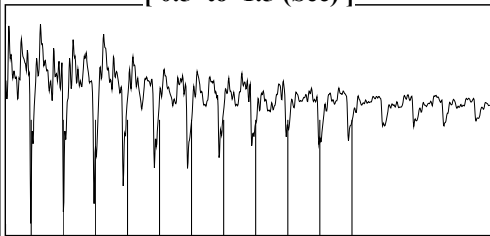
	KCC District Office #1 - 210 E. Frontview, Suite A, Dodge City, KS 67801	Phone 620.682.7933
	KCC District Office #2 - 3450 N. Rock Road, Building 600, Suite 601, Wichita, KS 67226	Phone 316.337.7400
	KCC District Office #3 - 137 E. 21st St., Chanute, KS 66720	Phone 620.902.6450
	KCC District Office #4 - 2301 E. 13th Street, Hays, KS 67601-2651	Phone 785.261.6250

Group: MyWells Well: chesney A 228 (acquired on: 05/25/21 12:21:17)



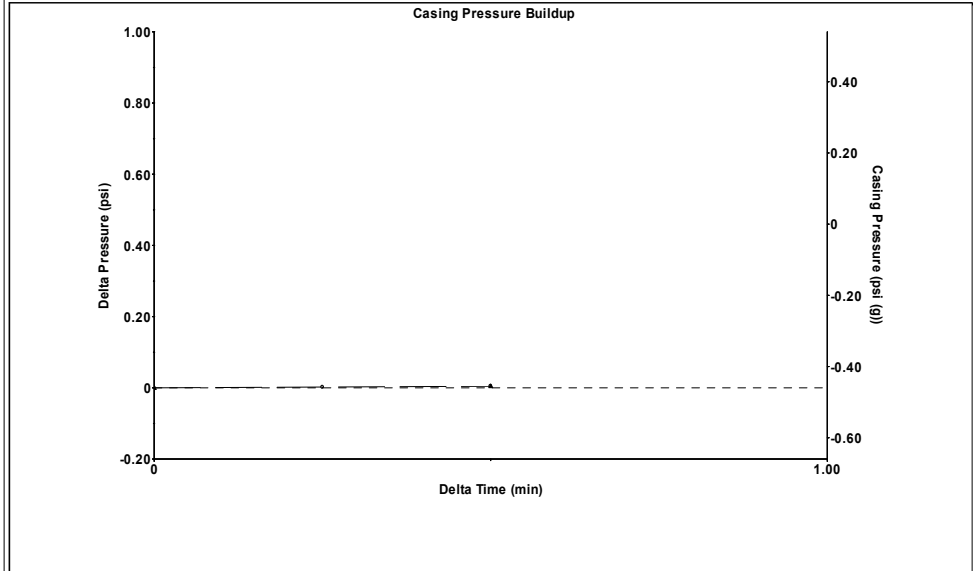
Filter Type High Pass Automatic Collar Count Yes Time 3.499 sec
 Manual Acoustic Velo 927.466 ft/s Manual JTS/sec 15.1745 Joints 53.296 Jts
 Depth 1628.73 ft

[0.5 to 1.5 (Sec)]



Analysis Method: Automatic

Group: MyWells Well: chesney A 228 (acquired on: 05/25/21 12:21:17)

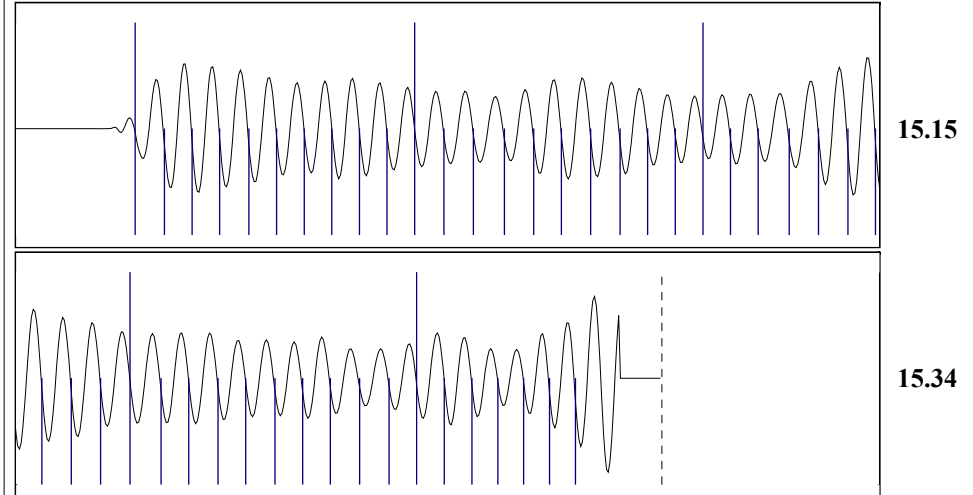


Change in Pressure 0.00 psi PT 12849
 Change in Time 0.50 min Range 0 - ? psi

Group: MyWells Well: chesney A 228 (acquired on: 05/25/21 12:21:17)

Production					
Current	Potential	Casing Pressure	Producing		
Oil - * -	0.0 BBL/D	-0.5 psi (g)	Annular Gas Flow	0 Mscf/D	
Water - * -	0.0 BBL/D	Casing Pressure Buildup	% Liquid	100 %	
Gas - * -	0.0 Mscf/D	0.005 psi			
		0.50 min			
IPR Method	Vogel	Gas/Liquid Interface Pressure			
PBHP/SBHP	0.68	0.4 psi (g)			
Production Efficiency	49.6				
		Liquid Level Depth			
Oil 40 deg.API		1628.73 ft			
Water 1.05 Sp.Gr.H2O		Pump Intake Depth			
Gas 1.05 Sp.Gr.AIR		2231.00 ft			
Acoustic Velocity	930.967 ft/s	Formation Depth			
		2170.00 ft			
Formation Submergence		Pump Intake			
Total Gaseous Liquid Column HT (TVD)	602 ft	206.5 psi (g)			
Equivalent Gas Free Liquid HT (TVD)	602 ft	Producing BHP			
		185.9 psi (g)			
Acoustic Test		Static BHP			
		281.1 psi (g)			

Group: MyWells Well: chesney A 228 (acquired on: 05/25/21 12:21:17)



Acoustic Velocity 930.967 ft/s Joints counted 46
 Joints Per Second 15.2318 jts/sec Joints to liquid level 53.296
 Depth to liquid level 1628.73 ft Filter Width 13.1745 17.1745
 Automatic Collar Count Yes Time to 1st Collar 0.276 3.296

Conservation Division
District Office No. 2
3450 N. Rock Road
Building 600, Suite 601
Wichita, KS 67226



Phone: 316-337-7400
Fax: 316-630-4005
<http://kcc.ks.gov/>

Andrew J. French, Chairperson
Dwight D. Keen, Commissioner
Susan K. Duffy, Commissioner

Laura Kelly, Governor

June 01, 2021

Michelle Henning
Vess Oil Corporation
1700 WATERFRONT PKWY BLDG 500
WICHITA, KS 67206-6619

Re: Temporary Abandonment
API 15-015-23350-00-01
CHESNEY A 228
SE/4 Sec.21-25S-05E
Butler County, Kansas

Dear Michelle Henning:

"Your temporary abandonment (TA) application for the well listed above has been approved. In accordance with K.A.R. 82-3-111 the TA status of this well will expire 06/01/2022.

- * If you return this well to service or plug it, please notify the District Office.
- * If you sell this well you are required to file a Transfer of Operator form, T-1.
- * If the well will remain temporarily abandoned, you must submit a new TA application, CP-111, before 06/01/2022.

You may contact me at the number above if you have questions.

Very truly yours,

Neal Rupp ECRS"