

KANSAS CORPORATION COMMISSION
OIL & GAS CONSERVATION DIVISION

TEMPORARY ABANDONMENT WELL APPLICATION

OPERATOR: License#
Name:
Address 1:
Address 2:
City: State: Zip:
Contact Person:
Phone:
Contact Person Email:
Field Contact Person:
Field Contact Person Phone:

API No. 15-
Spot Description:
Sec. Twp. S. R.
GPS Location: Lat: Long:
Datum: NAD27 NAD83 WGS84
County: Elevation:
Lease Name: Well #:
Well Type: Oil Gas OG WSW Other:
SWD Permit #: ENHR Permit #:
Gas Storage Permit #:
Spud Date: Date Shut-In:

Table with 7 columns: Conductor, Surface, Production, Intermediate, Liner, Tubing. Rows include Size, Setting Depth, Amount of Cement, Top of Cement, Bottom of Cement.

Casing Fluid Level from Surface: How Determined? Date:
Casing Squeeze(s): to w / sacks of cement, to w / sacks of cement. Date:
Do you have a valid Oil & Gas Lease? Yes No
Depth and Type: Junk in Hole at Tools in Hole at Casing Leaks: Yes No Depth of casing leak(s):
Type Completion: ALT. I ALT. II Depth of: DV Tool: w / sacks of cement Port Collar: w / sack of cement
Packer Type: Size: Inch Set at: Feet
Total Depth: Plug Back Depth: Plug Back Method:

Geological Data:

Table with 4 columns: Formation Name, Formation Top, Formation Base, Completion Information. Rows 1 and 2.

UNDER PENALTY OF PERJURY I HEREBY ATTEST THAT THE INFORMATION CONTAINED HEREIN IS TRUE AND CORRECT TO THE BEST OF MY KNOWLEDGE

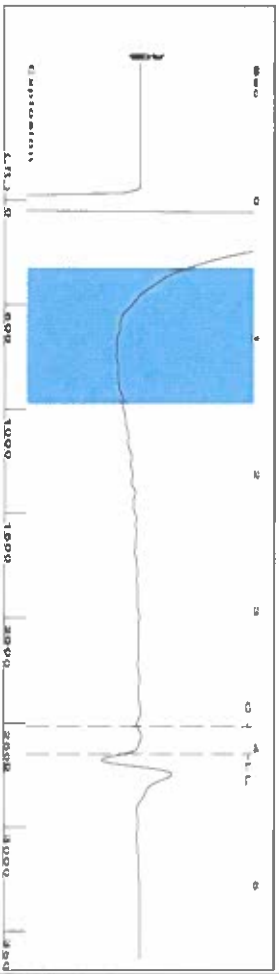
Submitted Electronically

Do NOT Write in This Space - KCC USE ONLY
Date Tested: Results: Date Plugged: Date Repaired: Date Put Back in Service:
Review Completed by: Comments:
TA Approved: Yes Denied Date:

Mail to the Appropriate KCC Conservation Office:

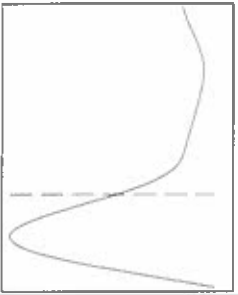
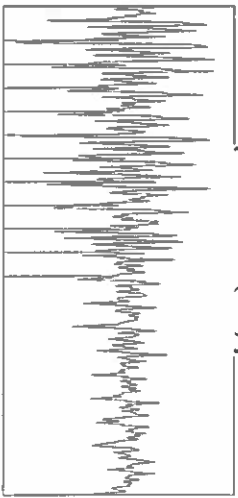
Map of Kansas with 4 numbered districts and corresponding office addresses and phone numbers.

Group: Liberal TAD Wells Well: Gleeson B-1 (acquired on: 06/08/21 10:29:19)



Filter Type High Pass Automatic Collar Count Yes Time 4.046 sec
 Manual Acoustic Velo 312.63 Manual JTS/sec 20.7039 Joints 83.6324 J/s
 Depth 2651.15 ft

1.05 to 1.5 (Sec) |



Analysis Method: Automatic

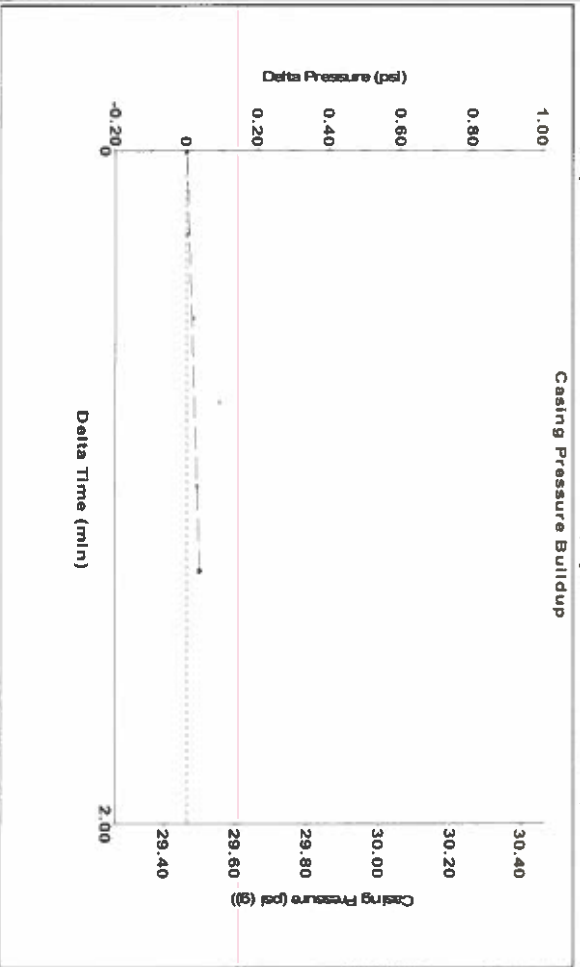
Group: Liberal TAD Wells Well: Gleeson B-1 (acquired on: 06/08/21 10:29:19)

Production	Potential	Casing Pressure	Static
Current	BB/L/D	29.5 psi (g)	Water Column Height
Oil 0	BB/L/D	Casing Pressure Buildup	Oil Column Height
Water 0	Masc/D	0.036 psi	MD 0 ft
Gas 0.0		1.25 min	
I/P Method	Vogel	Gas/Liquid Interface Pressure	
PBHP/SBHP		32.3 psi (g)	
Production Efficiency	0.0		
Oil 40 deg API		Liquid Level Depth	Water Column Height
Water 1.05 Sp Gr H ₂ O		2651.15 ft	MD 118 ft
Gas 0.70 Sp Gr AIR		Pump Intake Depth	
Acoustic Velocity	1310.5 ft/s	Formation Depth	
		2769.00 ft	



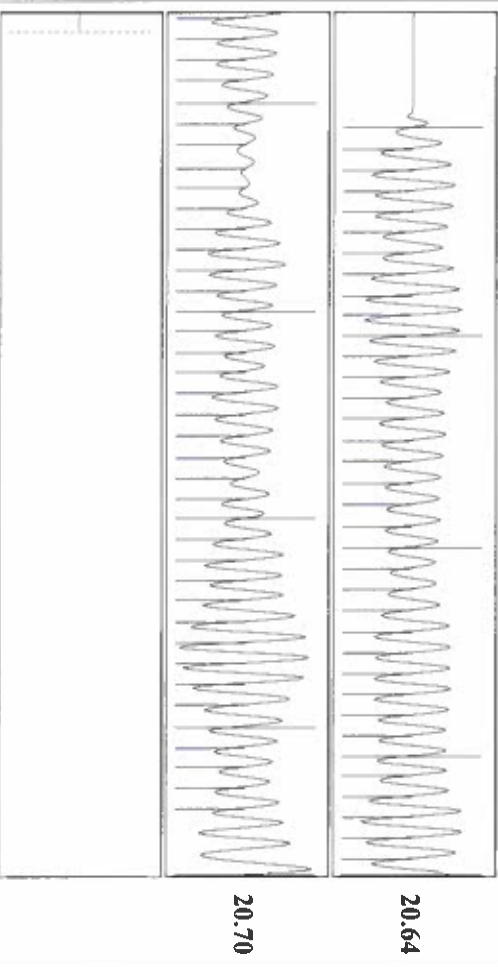
Group: Liberal TAD Wells Well: Gleeson B-1 (acquired on: 06/08/21 10:29:19)

Shot @ 300 psi BP



Change in Pressure 0.04 psi PTT1249 Range 0 - ? psi
 Change in Time 1.25 min

Group: Liberal TAD Wells Well: Gleeson B-1 (acquired on: 06/08/21 10:29:19)



Acoustic Velocity 1310.5 ft/s Joints counted 74
 Joints Per Second 20.6704 J/s/sec Joints to liquid level 83.6324
 Depth to liquid level 2651.15 ft Filter Width 18.7039
 Automatic Collar Count Yes Time to 1st Collar 0.264 3.844

June 10, 2021

Katherine McClurkan
Merit Energy Company, LLC
13727 Noel Road, Suite 1200
Dallas, TX 75240-7362

Re: Temporary Abandonment
API 15-175-00384-00-00
Gleeson B 1
NW/4 Sec.24-34S-34W
Seward County, Kansas

Dear Katherine McClurkan:

"Your temporary abandonment (TA) application for the well listed above has been approved. In accordance with K.A.R. 82-3-111 the TA status of this well will expire 06/10/2022.

- * If you return this well to service or plug it, please notify the District Office.
- * If you sell this well you are required to file a Transfer of Operator form, T-1.
- * If the well will remain temporarily abandoned, you must submit a new TA application, CP-111, before 06/10/2022.

You may contact me at the number above if you have questions.

Very truly yours,

Michael Maier"