

KANSAS CORPORATION COMMISSION
OIL & GAS CONSERVATION DIVISION

TEMPORARY ABANDONMENT WELL APPLICATION

OPERATOR: License#
Name:
Address 1:
Address 2:
City: State: Zip:
Contact Person:
Phone:
Contact Person Email:
Field Contact Person:
Field Contact Person Phone:

API No. 15-
Spot Description:
Sec. Twp. S. R.
GPS Location: Lat: Long:
Datum: NAD27 NAD83 WGS84
County: Elevation:
Lease Name: Well #:
Well Type: Oil Gas OG WSW Other:
SWD Permit #: ENHR Permit #:
Gas Storage Permit #:
Spud Date: Date Shut-In:

Table with 7 columns: Conductor, Surface, Production, Intermediate, Liner, Tubing. Rows include Size, Setting Depth, Amount of Cement, Top of Cement, Bottom of Cement.

Casing Fluid Level from Surface: How Determined? Date:
Casing Squeeze(s): to w / sacks of cement, to w / sacks of cement. Date:
Do you have a valid Oil & Gas Lease? Yes No
Depth and Type: Junk in Hole at Tools in Hole at Casing Leaks: Yes No Depth of casing leak(s):
Type Completion: ALT. I ALT. II Depth of: DV Tool: w / sacks of cement Port Collar: w / sack of cement
Packer Type: Size: Inch Set at: Feet
Total Depth: Plug Back Depth: Plug Back Method:

Geological Data:

Table with 4 columns: Formation Name, Formation Top, Formation Base, Completion Information. Rows 1 and 2.

UNDER PENALTY OF PERJURY I HEREBY ATTEST THAT THE INFORMATION CONTAINED HEREIN IS TRUE AND CORRECT TO THE BEST OF MY KNOWLEDGE

Submitted Electronically

Do NOT Write in This Space - KCC USE ONLY
Date Tested: Results: Date Plugged: Date Repaired: Date Put Back in Service:
Review Completed by: Comments:
TA Approved: Yes Denied Date:

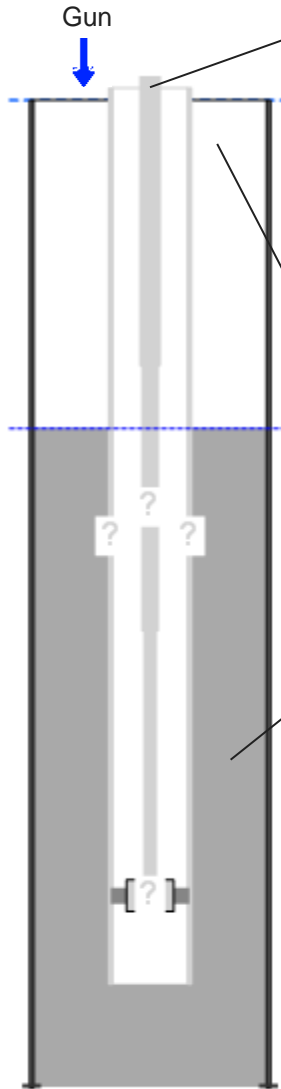
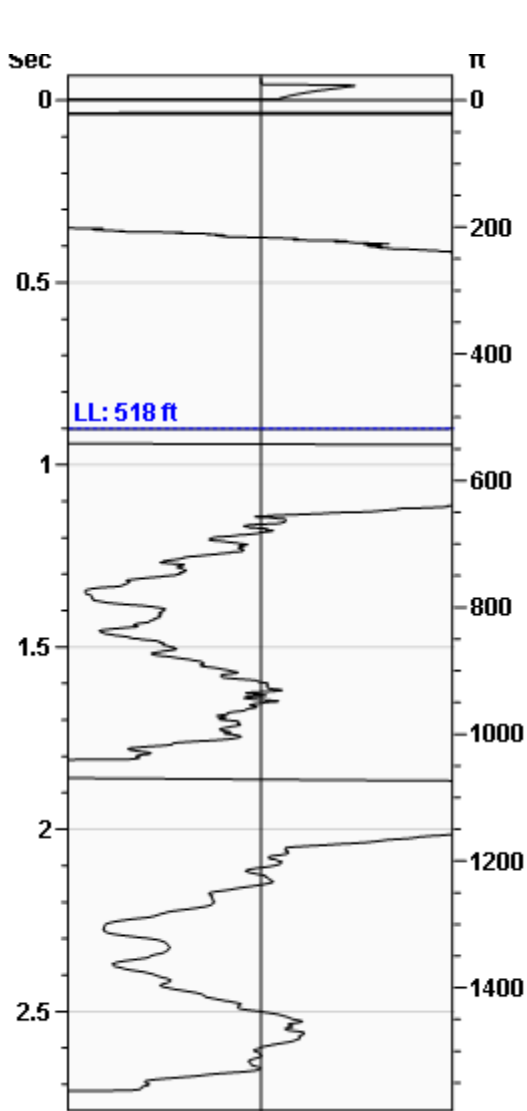
Mail to the Appropriate KCC Conservation Office:

Map of Kansas with 4 numbered districts. Table with 3 columns: District, Address, Phone. Rows 1-4.

WG Unknown

Fluid Above Pump
Liquid Level

1040 ft
518 ft



Production

Date Entered	05/28/21		
	Current	Potential	
Oil	**	**	BBL/D
Water	**	**	BBL/D
Gas	**	**	Mscf/D
IPR Method	Vogel		

Casing Pressure

Pressure -2.5 psi (g)

Annular Gas Flow

Gas Flow *. * Mscf/D

Fluid Properties

Gas Free Above Pump 1040 ft
% Liquid Above Pump 100.00%
% Liquid Below Pump **

Wellbore Pressures

PIP **
PBHP 352.0 psi (g) @ 1558 ft
SBHP 471.4 psi (g) @ 1558 ft

Depths

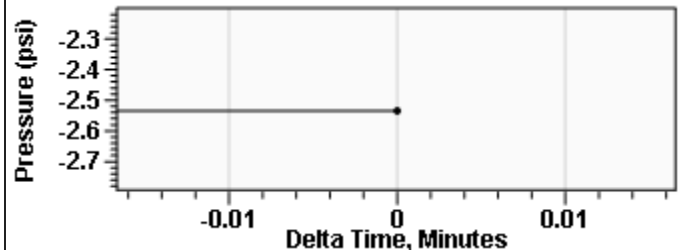
Pump Intake Depth 0 ft
Formation Depth 1558 ft

Acoustic Velocity

Acoustic Velocity 1150 ft/s **
Joints Per Sec. **
Joints To Liquid **
Gas Gravity 0.8502 Air = 1

Entered From Known Acoustic Velocity

Casing Pressure Buildup



Casing Pressure -2.5 psi (g)
Buildup 0.0 psi (g)
Buildup Time 0 sec
Gas Gravity 0.8502 Air = 1

Comments and Recommendations

5-28-21 - Acoustic Test

June 14, 2021

Nick Ahlerich
Murfin Drilling Co., Inc.
250 N WATER STE 300
WICHITA, KS 67202-1216

Re: Temporary Abandonment
API 15-039-20684-00-01
HUFF B 1 WSW
SW/4 Sec.10-01S-26W
Decatur County, Kansas

Dear Nick Ahlerich:

"Your temporary abandonment (TA) application for the well listed above has been approved. In accordance with K.A.R. 82-3-111 the TA status of this well will expire 06/14/2022.

- * If you return this well to service or plug it, please notify the District Office.
- * If you sell this well you are required to file a Transfer of Operator form, T-1.
- * If the well will remain temporarily abandoned, you must submit a new TA application, CP-111, before 06/14/2022.

You may contact me at the number above if you have questions.

Very truly yours,

RICHARD WILLIAMS"