

KANSAS CORPORATION COMMISSION
OIL & GAS CONSERVATION DIVISION

Form must be Typed
Form must be signed

TEMPORARY ABANDONMENT WELL APPLICATION

All blanks must be complete

OPERATOR: License#
Name:
Address 1:
Address 2:
City: State: Zip:
Contact Person:
Phone:
Contact Person Email:
Field Contact Person:
Field Contact Person Phone:

API No. 15-
Spot Description:
Sec. Twp. S. R.
feet from N / S Line of Section
feet from E / W Line of Section
GPS Location: Lat: , Long:
Datum: NAD27 NAD83 WGS84
County: Elevation: GL KB
Lease Name: Well #:
Well Type: Oil Gas OG WSW Other:
SWD Permit #: ENHR Permit #:
Gas Storage Permit #:
Spud Date: Date Shut-In:

Table with 7 columns: Conductor, Surface, Production, Intermediate, Liner, Tubing. Rows include Size, Setting Depth, Amount of Cement, Top of Cement, Bottom of Cement.

Casing Fluid Level from Surface: How Determined? Date:
Casing Squeeze(s): to w / sacks of cement, to w / sacks of cement. Date:
Do you have a valid Oil & Gas Lease? Yes No
Depth and Type: Junk in Hole at Tools in Hole at Casing Leaks: Yes No Depth of casing leak(s):
Type Completion: ALT. I ALT. II Depth of: DV Tool: w / sacks of cement Port Collar: w / sack of cement
Packer Type: Size: Inch Set at: Feet
Total Depth: Plug Back Depth: Plug Back Method:

Geological Data:

Table with 4 columns: Formation Name, Formation Top, Formation Base, Completion Information. Rows 1 and 2.

UNDER PENALTY OF PERJURY I HEREBY ATTEST THAT THE INFORMATION CONTAINED HEREIN IS TRUE AND CORRECT TO THE BEST OF MY KNOWLEDGE

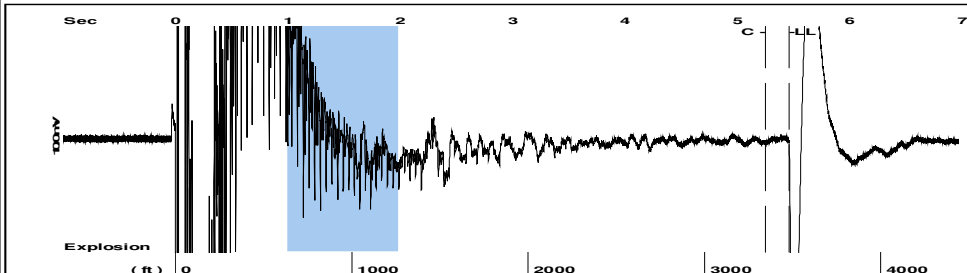
Submitted Electronically

Do NOT Write in This Space - KCC USE ONLY
Date Tested: Results: Date Plugged: Date Repaired: Date Put Back in Service:
Review Completed by: Comments:
TA Approved: Yes Denied Date:

Mail to the Appropriate KCC Conservation Office:

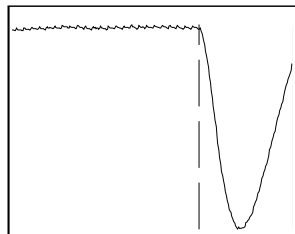
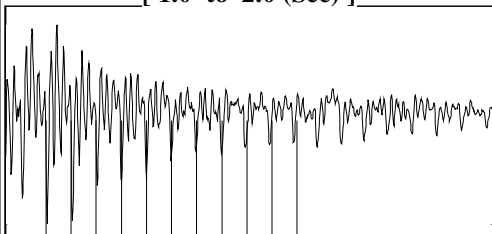
Table with 3 columns: District Office, Address, Phone. Rows for District Office #1, #2, #3, #4.

Group: Novy Oil & Gas Well: Ash #1 (acquired on: 05/26/21 09:29:16)



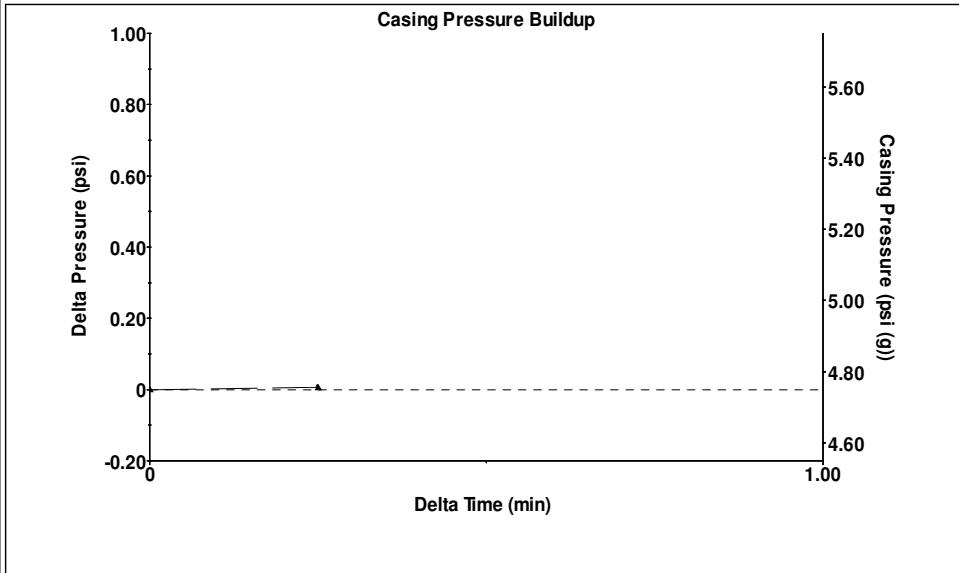
Filter Type High Pass Automatic Collar Count Yes Time 5.46 sec
 Manual Acoustic Veloc 1228.68 ft/s Manual JTS/sec 19.3798 Joints 109.727 Jts
 Depth 3478.34 ft

[1.0 to 2.0 (Sec)]



Analysis Method: Automatic

Group: Novy Oil & Gas Well: Ash #1 (acquired on: 05/26/21 09:29:16)

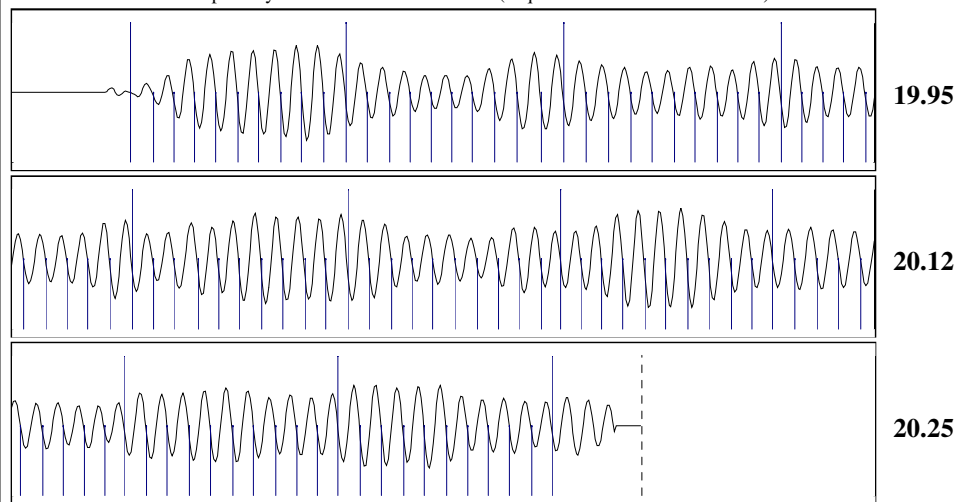


Change in Pressure 0.01 psi PT15262
 Range 0 - ? psi
 Change in Time 0.25 min

Group: Novy Oil & Gas Well: Ash #1 (acquired on: 05/26/21 09:29:16)

Production Current	Potential	Casing Pressure	Static
Oil - *-	- *- BBL/D	4.8 psi (g)	
Water - *-	- *- BBL/D	Casing Pressure Buildup	Oil Column Height
Gas - *-	- *- Mscf/D	0.006 psi	MD 0 ft
		0.25 min	
IPR Method	Vogel	Gas/Liquid Interface Pressure	Water Column Height
PBHP/SBHP	- *-	6.5 psi (g)	MD 362 ft
Production Efficiency	0.0		
		Liquid Level Depth	
Oil 40 deg.API		3478.34 ft	
Water 1.05 Sp.Gr.H2O		Pump Intake Depth	
Gas 0.73 Sp.Gr.AIR		- *- ft	
Acoustic Velocity	1274.12 ft/s	Formation Depth	
		3840.00 ft	
		Static BHP	
		170.9 psi (g)	

Group: Novy Oil & Gas Well: Ash #1 (acquired on: 05/26/21 09:29:16)



Acoustic Velocity	1274.12 ft/s	Joints counted	100
Joints Per Second	20.0965 jts/sec	Joints to liquid level	109.727
Depth to liquid level	3478.34 ft	Filter Width	17.3798 21.3798
Automatic Collar Count	Yes	Time to 1st Collar	0.276 5.252

June 15, 2021

Michael E. Novy
Novy Oil & Gas, Inc.
PO BOX 559
GODDARD, KS 67052-0559

Re: Temporary Abandonment
API 15-095-01175-00-00
ASH 1
NE/4 Sec.09-28S-05W
Kingman County, Kansas

Dear Michael E. Novy:

"Your temporary abandonment (TA) application for the well listed above has been approved. In accordance with K.A.R. 82-3-111 the TA status of this well will expire 06/15/2022.

- * If you return this well to service or plug it, please notify the District Office.
- * If you sell this well you are required to file a Transfer of Operator form, T-1.
- * If the well will remain temporarily abandoned, you must submit a new TA application, CP-111, before 06/15/2022.

You may contact me at the number above if you have questions.

Very truly yours,

Steve VanGieson"