

KANSAS CORPORATION COMMISSION
OIL & GAS CONSERVATION DIVISION

TEMPORARY ABANDONMENT WELL APPLICATION

OPERATOR: License#
Name:
Address 1:
Address 2:
City: State: Zip:
Contact Person:
Phone:
Contact Person Email:
Field Contact Person:
Field Contact Person Phone:

API No. 15-
Spot Description:
Sec. Twp. S. R.
GPS Location: Lat, Long
Datum: NAD27, NAD83, WGS84
County: Elevation:
Lease Name: Well #:
Well Type: Oil, Gas, OG, WSW, Other
SWD Permit #: ENHR Permit #:
Gas Storage Permit #:
Spud Date: Date Shut-In:

Table with 7 columns: Conductor, Surface, Production, Intermediate, Liner, Tubing. Rows include Size, Setting Depth, Amount of Cement, Top of Cement, Bottom of Cement.

Casing Fluid Level from Surface: How Determined? Date:
Casing Squeeze(s): to w / sacks of cement, to w / sacks of cement. Date:
Do you have a valid Oil & Gas Lease? Yes No
Depth and Type: Junk in Hole at Tools in Hole at Casing Leaks: Yes No Depth of casing leak(s):
Type Completion: ALT. I ALT. II Depth of: DV Tool: w / sacks of cement Port Collar: w / sack of cement
Packer Type: Size: Inch Set at: Feet
Total Depth: Plug Back Depth: Plug Back Method:

Geological Data:

Table with 4 columns: Formation Name, Formation Top, Formation Base, Completion Information. Rows 1 and 2.

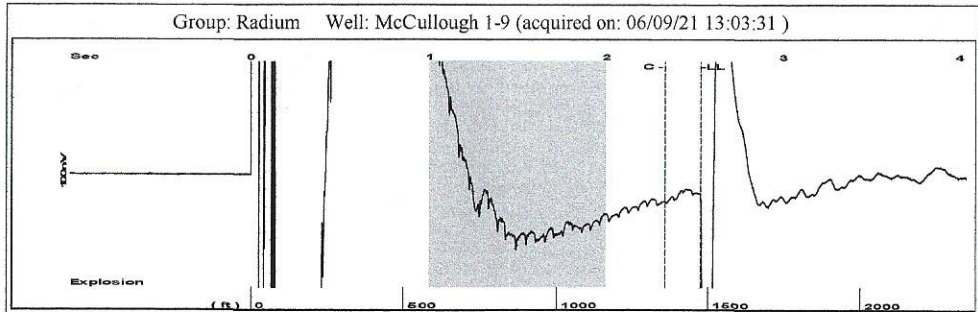
UNDER PENALTY OF PERJURY I HEREBY ATTEST THAT THE INFORMATION CONTAINED HEREIN IS TRUE AND CORRECT TO THE BEST OF MY KNOWLEDGE

Submitted Electronically

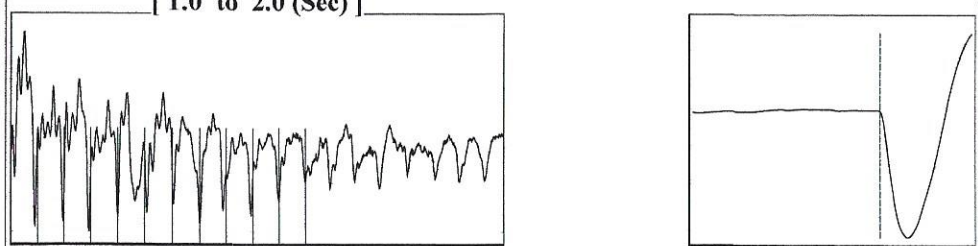
Do NOT Write in This Space - KCC USE ONLY
Date Tested: Results: Date Plugged: Date Repaired: Date Put Back in Service:
Review Completed by: Comments:
TA Approved: Yes Denied Date:

Mail to the Appropriate KCC Conservation Office:

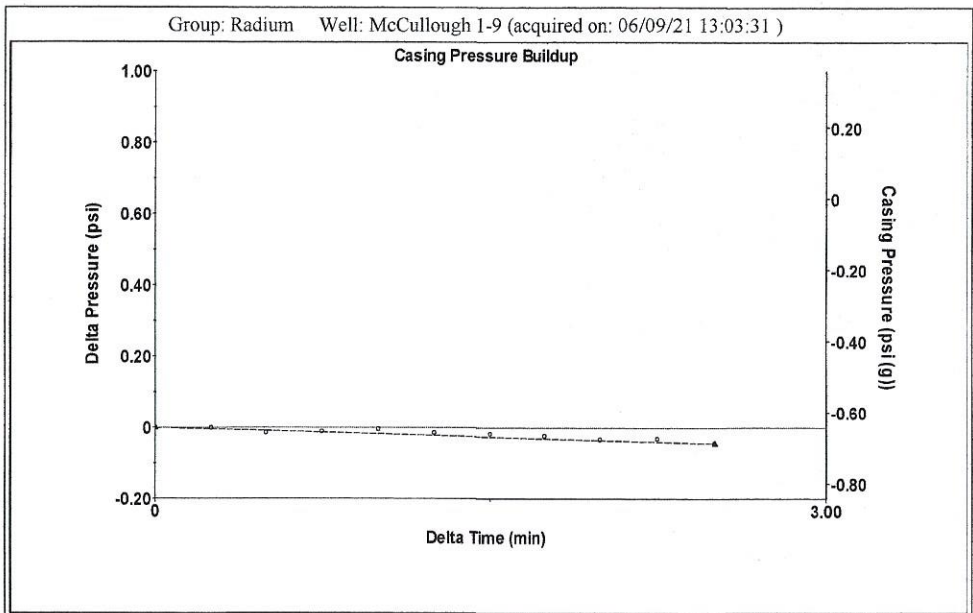
Table with 3 columns: District Office #, Address, Phone. Rows 1-4.



Filter Type High Pass Automatic Collar Count Yes Time 2.534 sec
 Manual Acoustic Velo 1169.74 ft/s Manual JTS/sec 18.4502 Joints 46.5629 Jts
 Depth 1476.04 ft



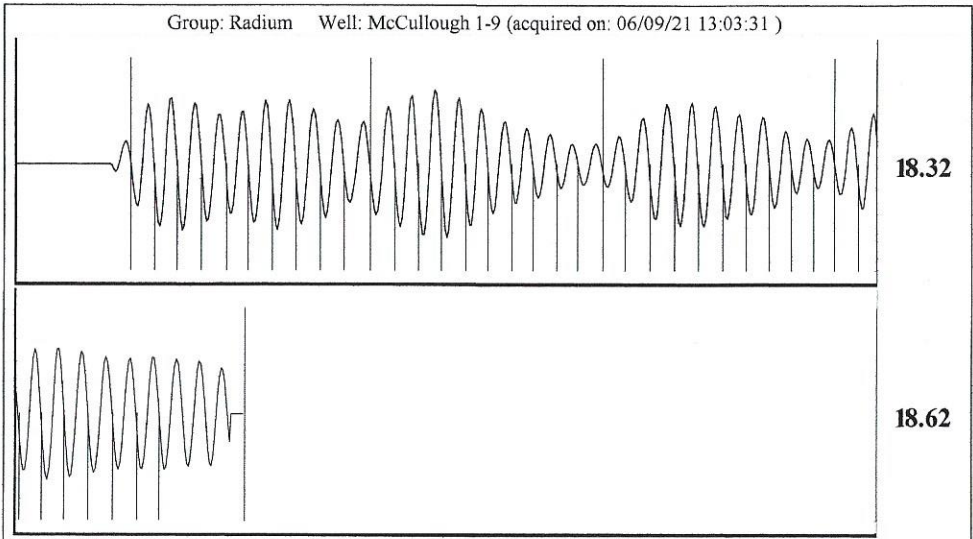
Analysis Method: Automatic



Change in Pressure -0.04 psi PT13440
 Change in Time 2.50 min Range 0 - ? psi

Group: Radium Well: McCullough 1-9 (acquired on: 06/09/21 13:03:31)

Production Current	Potential	Casing Pressure	Producing
Oil - *-	- *- BBL/D	-0.6 psi (g)	Annular Gas Flow
Water - *-	- *- BBL/D	Casing Pressure Buildup	0 Mscf/D
Gas - *-	- *- Mscf/D	-0.0 psi	% Liquid
		2.50 min	100 %
IPR Method	Vogel	Gas/Liquid Interface Pressure	
PBHP/SBHP	- *-	-0.0 psi (g)	
Production Efficiency	0.0		
Oil 40 deg.API		Liquid Level Depth	
Water 1.05 Sp.Gr.H2O		1476.04 ft	
Gas 0.82 Sp.Gr.AIR		Pump Intake Depth	
		- *- ft	
Acoustic Velocity 1164.99 ft/s		Formation Depth	
		3590.00 ft	
Formation Submergence		Pump Intake	
Total Gaseous Liquid Column HT (TVD)	2114 ft	- *- psi (g)	
Equivalent Gas Free Liquid HT (TVD)	2114 ft	Producing BHP	
		961.1 psi (g)	
Acoustic Test		Static BHP	
		- *- psi (g)	



Acoustic Velocity 1164.99 ft/s Joints counted 38
 Joints Per Second 18.3752 jts/sec Joints to liquid level 46.5629
 Depth to liquid level 1476.04 ft Filter Width 16.4502 20.4502
 Automatic Collar Count Yes Time to 1st Collar 0.264 2.332

June 16, 2021

Loveness Mpanje
F. G. Holl Company L.L.C.
9431 E CENTRAL STE 100
WICHITA, KS 67206-2563

Re: Temporary Abandonment
API 15-185-23307-00-00
MCCULLOUGH 1-9
SE/4 Sec.09-21S-14W
Stafford County, Kansas

Dear Loveness Mpanje:

"Your temporary abandonment (TA) application for the well listed above has been approved. In accordance with K.A.R. 82-3-111 the TA status of this well will expire 06/16/2022.

- * If you return this well to service or plug it, please notify the District Office.
- * If you sell this well you are required to file a Transfer of Operator form, T-1.
- * If the well will remain temporarily abandoned, you must submit a new TA application, CP-111, before 06/16/2022.

You may contact me at the number above if you have questions.

Very truly yours,

Michael Maier"