

KANSAS CORPORATION COMMISSION
OIL & GAS CONSERVATION DIVISION

TEMPORARY ABANDONMENT WELL APPLICATION

OPERATOR: License#
Name:
Address 1:
Address 2:
City: State: Zip:
Contact Person:
Phone:
Contact Person Email:
Field Contact Person:
Field Contact Person Phone:

API No. 15-
Spot Description:
Sec. Twp. S. R.
GPS Location: Lat, Long
Datum: NAD27, NAD83, WGS84
County: Elevation:
Lease Name: Well #:
Well Type: Oil, Gas, OG, WSW, Other
SWD Permit #: ENHR Permit #:
Gas Storage Permit #:
Spud Date: Date Shut-In:

Table with 7 columns: Conductor, Surface, Production, Intermediate, Liner, Tubing. Rows include Size, Setting Depth, Amount of Cement, Top of Cement, Bottom of Cement.

Casing Fluid Level from Surface: How Determined? Date:
Casing Squeeze(s): to w / sacks of cement, to w / sacks of cement. Date:
Do you have a valid Oil & Gas Lease? Yes No
Depth and Type: Junk in Hole at Tools in Hole at Casing Leaks: Yes No Depth of casing leak(s):
Type Completion: ALT. I ALT. II Depth of: DV Tool: w / sacks of cement Port Collar: w / sack of cement
Packer Type: Size: Inch Set at: Feet
Total Depth: Plug Back Depth: Plug Back Method:

Geological Data:

Table with 4 columns: Formation Name, Formation Top, Formation Base, Completion Information. Rows 1 and 2.

UNDER PENALTY OF PERJURY I HEREBY ATTEST THAT THE INFORMATION CONTAINED HEREIN IS TRUE AND CORRECT TO THE BEST OF MY KNOWLEDGE

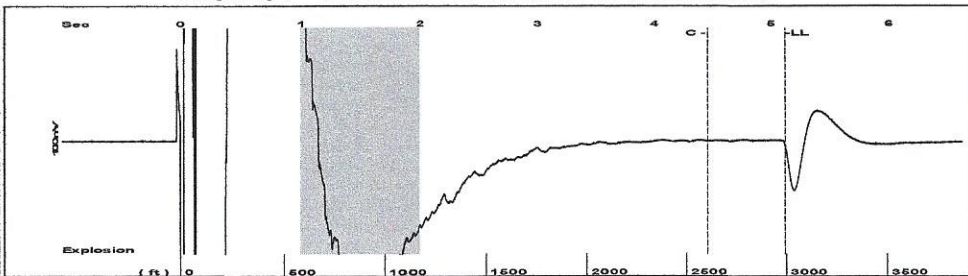
Submitted Electronically

Do NOT Write in This Space - KCC USE ONLY
Date Tested: Results: Date Plugged: Date Repaired: Date Put Back in Service:
Review Completed by: Comments:
TA Approved: Yes Denied Date:

Mail to the Appropriate KCC Conservation Office:

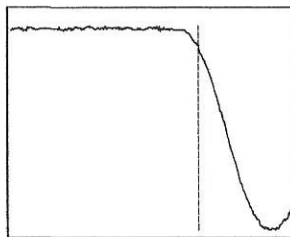
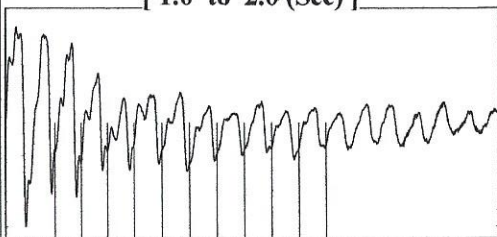
Table with 3 columns: District Office #, Address, Phone. Rows 1-4.

Group: Belpre Well: Keller A 1-36 (acquired on: 06/10/21 09:05:47)



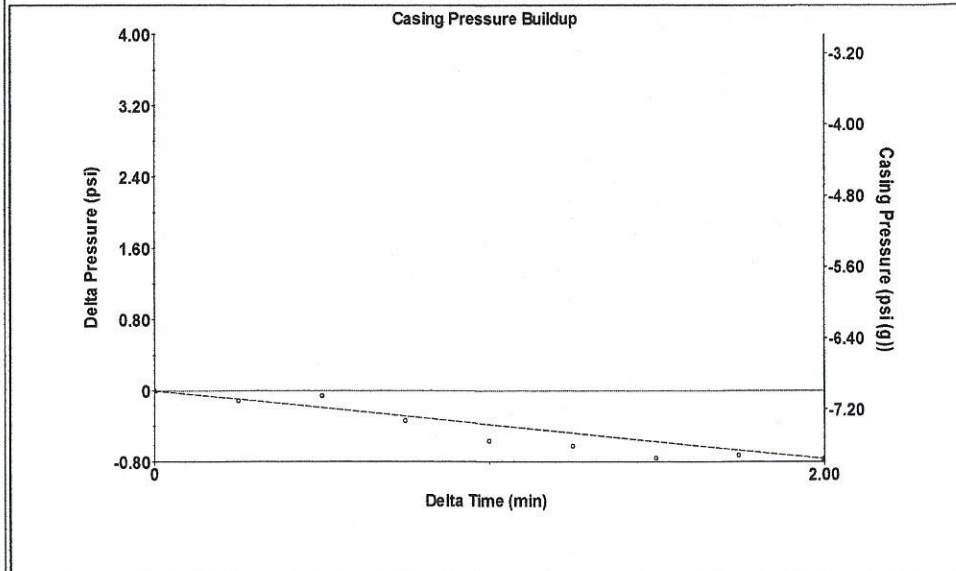
Filter Type High Pass Automatic Collar Count Yes Time 5.119 sec
 Manual Acoustic Velo 1161.17 ft/s Manual JTS/sec 18.315 Joints 94.3877 Jts
 Depth 2992.09 ft

[1.0 to 2.0 (Sec)]



Analysis Method: Automatic

Group: Belpre Well: Keller A 1-36 (acquired on: 06/10/21 09:05:47)



Change in Pressure -0.76 psi PT13440
 Range 0 - ? psi
 Change in Time 2.00 min

Group: Belpre Well: Keller A 1-36 (acquired on: 06/10/21 09:05:47)

Production Current Potential
 Oil - * - BBL/D
 Water - * - BBL/D
 Gas - * - Mscf/D

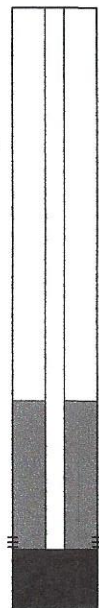
IPR Method Vogel
 PBHP/SBHP - * -
 Production Efficiency 0.0

Oil 40 deg.API
 Water 1.05 Sp.Gr.H2O
 Gas 0.82 Sp.Gr.AIR

Acoustic Velocity 1169.01 ft/s

Casing Pressure -7.0 psi (g)
 Casing Pressure Buildup -0.8 psi
 2.00 min
 Gas/Liquid Interface Pressure -6.3 psi (g)

Liquid Level Depth 2992.09 ft
 Pump Intake Depth 4325.00 ft
 Formation Depth 4258.00 ft



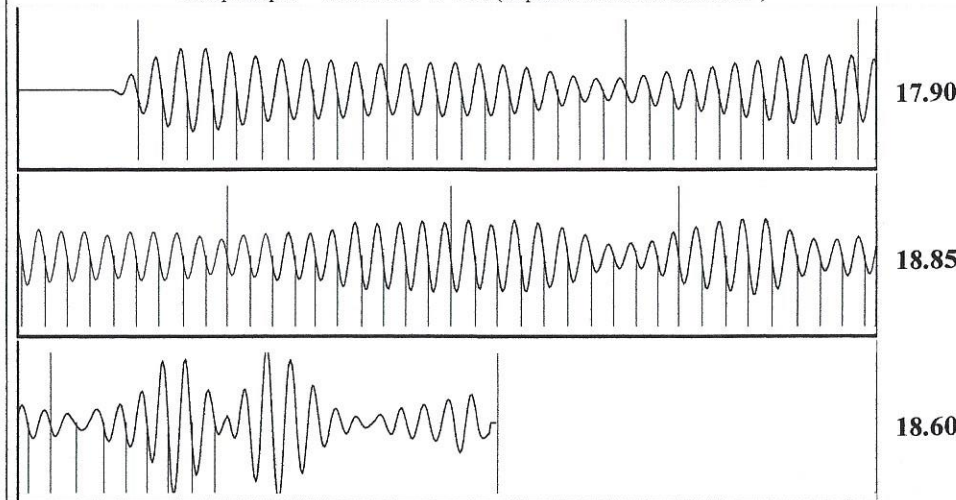
Producing
 Annular Gas Flow 0 Mscf/D
 % Liquid 100 %

Pump Intake 442.5 psi (g)
 Producing BHP 420.6 psi (g)
 Static BHP - * - psi (g)

Formation Submergence
 Total Gaseous Liquid Column HT (TVD) 1333 ft
 Equivalent Gas Free Liquid HT (TVD) 1333 ft

Acoustic Test

Group: Belpre Well: Keller A 1-36 (acquired on: 06/10/21 09:05:47)



Acoustic Velocity 1169.01 ft/s Joints counted 77
 Joints Per Second 18.4387 jts/sec Joints to liquid level 94.3877
 Depth to liquid level 2992.09 ft Filter Width 16.315 20.315
 Automatic Collar Count Yes Time to 1st Collar 0.28 4.456

Conservation Division
District Office No. 1
210 E. Frontview, Suite A
Dodge City, KS 67801



Phone: 620-682-7933
<http://kcc.ks.gov/>

Andrew J. French, Chairperson
Dwight D. Keen, Commissioner
Susan K. Duffy, Commissioner

Laura Kelly, Governor

June 16, 2021

Loveness Mpanje
F. G. Holl Company L.L.C.
9431 E CENTRAL STE 100
WICHITA, KS 67206-2563

Re: Temporary Abandonment
API 15-145-21418-00-00
KELLER A 1-36
SE/4 Sec.36-23S-17W
Pawnee County, Kansas

Dear Loveness Mpanje:

"Your temporary abandonment (TA) application for the well listed above has been approved. In accordance with K.A.R. 82-3-111 the TA status of this well will expire 06/16/2022.

- * If you return this well to service or plug it, please notify the District Office.
- * If you sell this well you are required to file a Transfer of Operator form, T-1.
- * If the well will remain temporarily abandoned, you must submit a new TA application, CP-111, before 06/16/2022.

You may contact me at the number above if you have questions.

Very truly yours,

Michael Maier"