

KANSAS CORPORATION COMMISSION
OIL & GAS CONSERVATION DIVISION

Form must be Typed
Form must be signed

TEMPORARY ABANDONMENT WELL APPLICATION

All blanks must be complete

OPERATOR: License#
Name:
Address 1:
Address 2:
City: State: Zip:
Contact Person:
Phone:
Contact Person Email:
Field Contact Person:
Field Contact Person Phone:

API No. 15-
Spot Description:
Sec. Twp. S. R.
feet from N / S Line of Section
feet from E / W Line of Section
GPS Location: Lat: , Long:
Datum: NAD27 NAD83 WGS84
County: Elevation: GL KB
Lease Name: Well #:
Well Type: (check one) Oil Gas OG WSW Other:
SWD Permit #: ENHR Permit #:
Gas Storage Permit #:
Spud Date: Date Shut-In:

Table with 7 columns: Conductor, Surface, Production, Intermediate, Liner, Tubing. Rows include Size, Setting Depth, Amount of Cement, Top of Cement, Bottom of Cement.

Casing Fluid Level from Surface: How Determined? Date:
Casing Squeeze(s): to w / sacks of cement, to w / sacks of cement. Date:
Do you have a valid Oil & Gas Lease? Yes No
Depth and Type: Junk in Hole at Tools in Hole at Casing Leaks: Yes No Depth of casing leak(s):
Type Completion: ALT. I ALT. II Depth of: DV Tool: w / sacks of cement Port Collar: w / sack of cement
Packer Type: Size: Inch Set at: Feet
Total Depth: Plug Back Depth: Plug Back Method:

Geological Date:

Table with 4 columns: Formation Name, Formation Top, Formation Base, Completion Information. Rows 1 and 2.

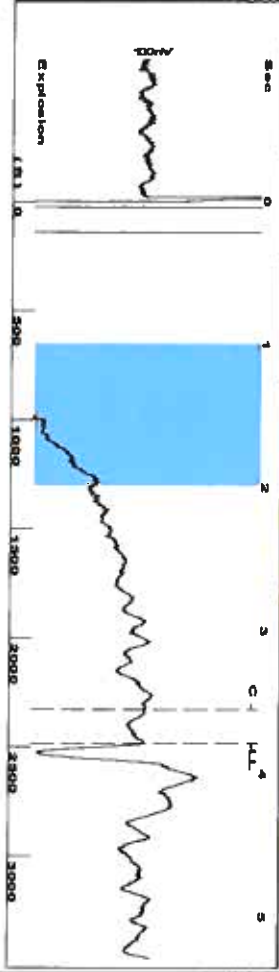
UNDER PENALTY OF PERJURY I HEREBY ATTEST THAT THE INFORMATION CONTAINED HEREIN IS TRUE AND CORRECT TO THE BEST OF MY KNOWLEDGE

Submitted Electronically

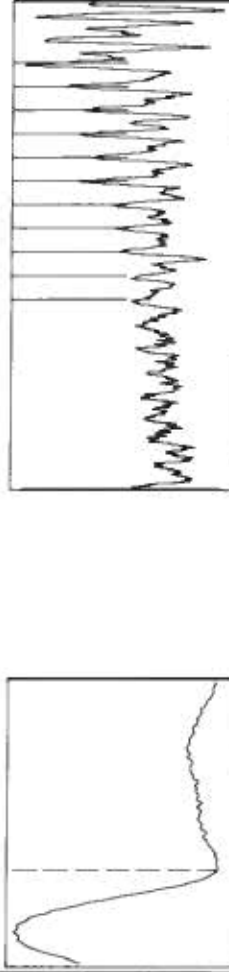
Do NOT Write in This Space - KCC USE ONLY
Date Tested: Results: Date Plugged: Date Repaired: Date Put Back in Service:
Review Completed by: Comments:
TA Approved: Yes Denied Date:

Mail to the Appropriate KCC Conservation Office:

Table with 3 columns: District Office, Address, Phone. Rows for District Office #1, #2, #3, #4.

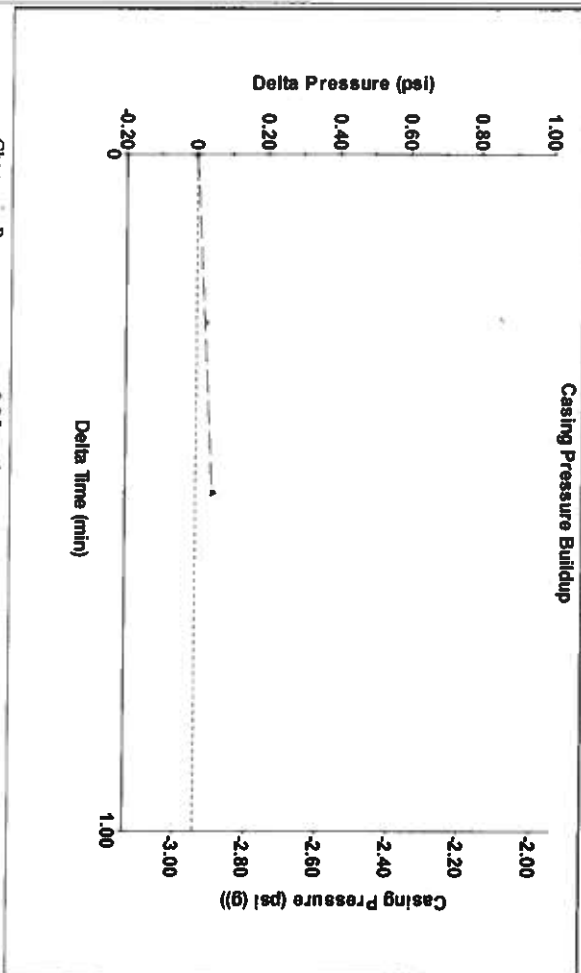
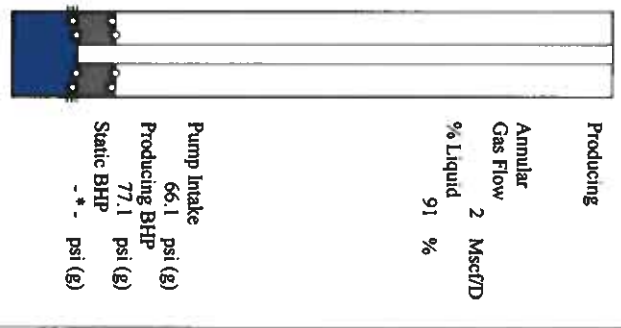


Filter Type: High Pass  
 Manual Acoustic Velo: 1304.53 ft/s  
 Automatic Collar Count: Yes  
 Manual JTS/sec: 20.5761  
 Time: 3.786 sec  
 Joints: 78.2993 Jts  
 Depth: 2482.09 ft

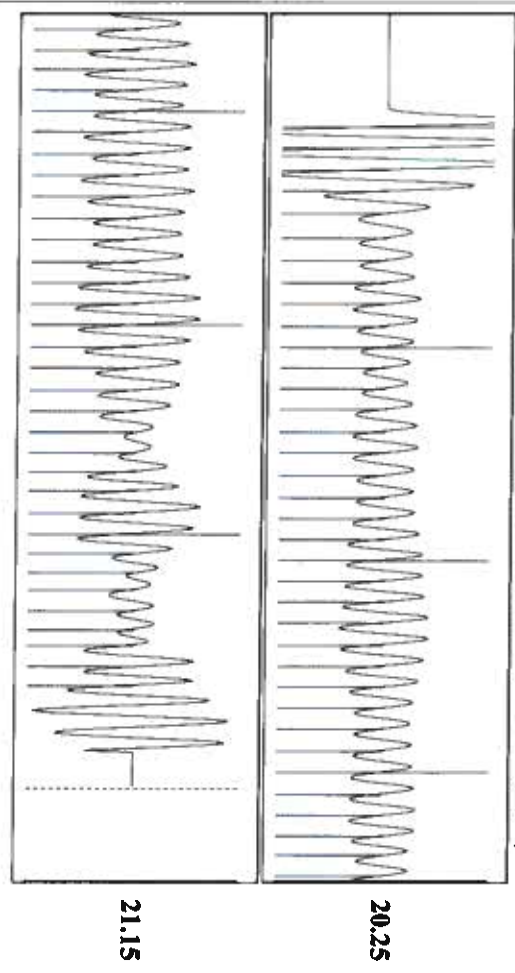


**Analysis Method: Automatic**

Production Current	Potential	Casing Pressure	Producing
Oil: -*-	BBL/D	-2.9 psi (g)	Annular
Water: -*-	BBL/D	Casing Pressure Buildup	Gas Flow
Gas: -*-	Mscf/D	0.047 psi	% Liquid
IPR Method: Vogel	Gas/Liquid Interface Pressure	0.50 min	2 Mscf/D
PBHP/SBHP: -*-	-2.2 psi (g)	Production Efficiency: 0.0	
Liquid Level Depth: 2482.09 ft			
Pump Intake Depth: 2705.00 ft			
Formation Depth: 2731.00 ft			
Acoustic Velocity: 1311.19 ft/s			
Formation Submergence: 223 ft			
Total Gaseous Liquid Column HT (TVVD): 202 ft			
Equivalent Gas Free Liquid HT (TVVD):			
Acoustic Test:			
Tim Frydendall-Fluid Level Technician			



Change in Pressure: 0.05 psi  
 Change in Time: 0.50 min  
 PT1 8868 Range: 0 - 2 psi



Acoustic Velocity: 1311.19 ft/s  
 Joints Per Second: 20.6813 Jts/sec  
 Depth to liquid level: 2482.09 ft  
 Automatic Collar Count: Yes

Joints counted: 68  
 Joints to liquid level: 78.2993  
 Filter Width: 18.5761  
 Time to 1st Collar: 3.548

June 24, 2021

Katherine McClurkan  
Merit Energy Company, LLC  
13727 Noel Road, Suite 1200  
Dallas, TX 75240-7362

Re: Temporary Abandonment  
API 15-081-00230-00-00  
Cave 1  
SW/4 Sec.25-28S-33W  
Haskell County, Kansas

Dear Katherine McClurkan:

"Your temporary abandonment (TA) application for the well listed above has been approved. In accordance with K.A.R. 82-3-111 the TA status of this well will expire 06/24/2022.

- \* If you return this well to service or plug it, please notify the District Office.
- \* If you sell this well you are required to file a Transfer of Operator form, T-1.
- \* If the well will remain temporarily abandoned, you must submit a new TA application, CP-111, before 06/24/2022.

You may contact me at the number above if you have questions.

Very truly yours,

Michael Maier"