

KANSAS CORPORATION COMMISSION
OIL & GAS CONSERVATION DIVISION

TEMPORARY ABANDONMENT WELL APPLICATION

OPERATOR: License#
Name:
Address 1:
Address 2:
City: State: Zip:
Contact Person:
Phone:
Contact Person Email:
Field Contact Person:
Field Contact Person Phone:

API No. 15-
Spot Description:
Sec. Twp. S. R.
GPS Location: Lat, Long
Datum: NAD27, NAD83, WGS84
County: Elevation:
Lease Name: Well #:
Well Type: Oil, Gas, OG, WSW, Other
SWD Permit #: ENHR Permit #:
Gas Storage Permit #:
Spud Date: Date Shut-In:

Table with 7 columns: Conductor, Surface, Production, Intermediate, Liner, Tubing. Rows include Size, Setting Depth, Amount of Cement, Top of Cement, Bottom of Cement.

Casing Fluid Level from Surface: How Determined? Date:
Casing Squeeze(s): to w / sacks of cement, to w / sacks of cement. Date:
Do you have a valid Oil & Gas Lease? Yes No
Depth and Type: Junk in Hole at Tools in Hole at Casing Leaks: Yes No Depth of casing leak(s):
Type Completion: ALT. I ALT. II Depth of: DV Tool: w / sacks of cement Port Collar: w / sack of cement
Packer Type: Size: Inch Set at: Feet
Total Depth: Plug Back Depth: Plug Back Method:

Geological Date:

Table with 4 columns: Formation Name, Formation Top, Formation Base, Completion Information. Rows 1 and 2.

UNDER PENALTY OF PERJURY I HEREBY ATTEST THAT THE INFORMATION CONTAINED HEREIN IS TRUE AND CORRECT TO THE BEST OF MY KNOWLEDGE

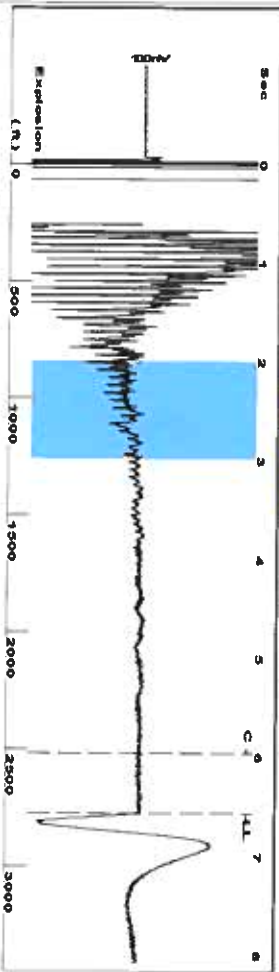
Submitted Electronically

Do NOT Write in This Space - KCC USE ONLY
Date Tested: Results: Date Plugged: Date Repaired: Date Put Back in Service:
Review Completed by: Comments:
TA Approved: Yes Denied Date:

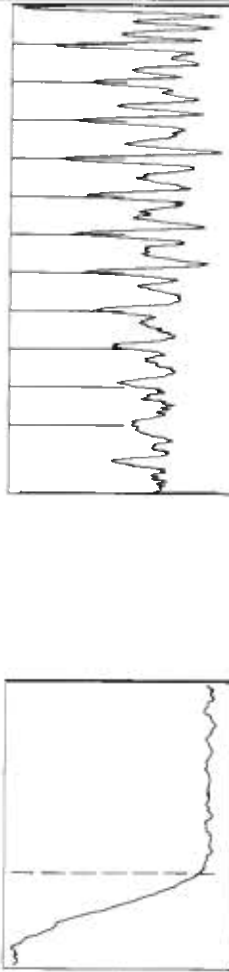
Mail to the Appropriate KCC Conservation Office:

Table with 2 columns: Office Address, Phone. Rows for District Office #1, #2, #3, #4.

Group: LBSLU Well: Johnson 4L (acquired on: 06/17/21 12:14:26)



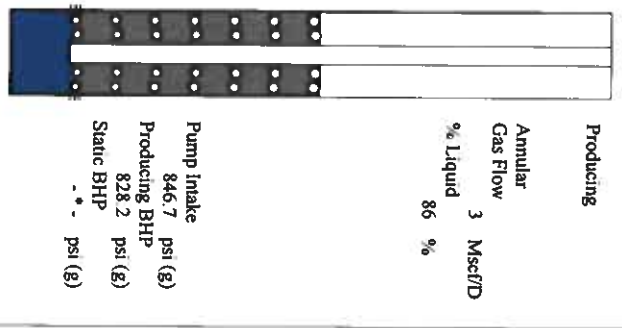
Filter Type: High Pass
Manual Acoustic Veloc: 819.462 ft/s
Automatic Collar Count: Yes
Manual JTS/Sec: 12.8041
Time: 6.567 sec
Joints: 86.7121 Jts
Depth: 2774.79 ft



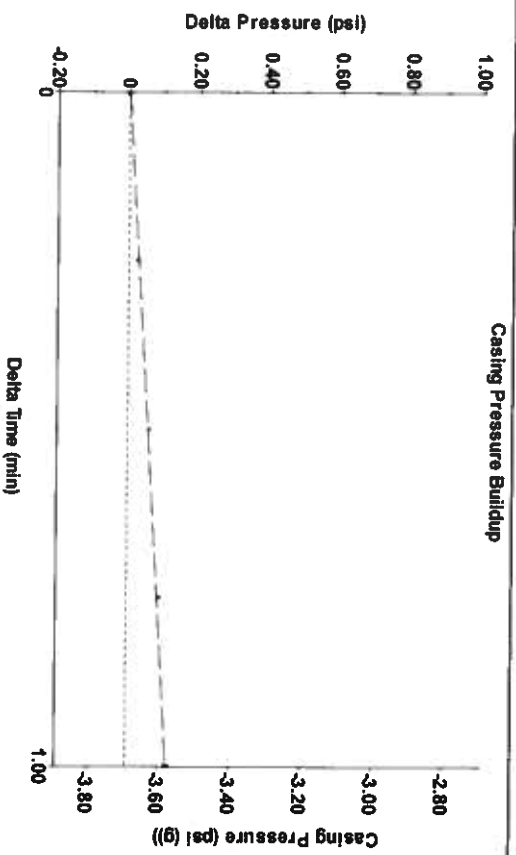
Analysis Method: Automatic

Group: LBSLU Well: Johnson 4L (acquired on: 06/17/21 12:14:26)

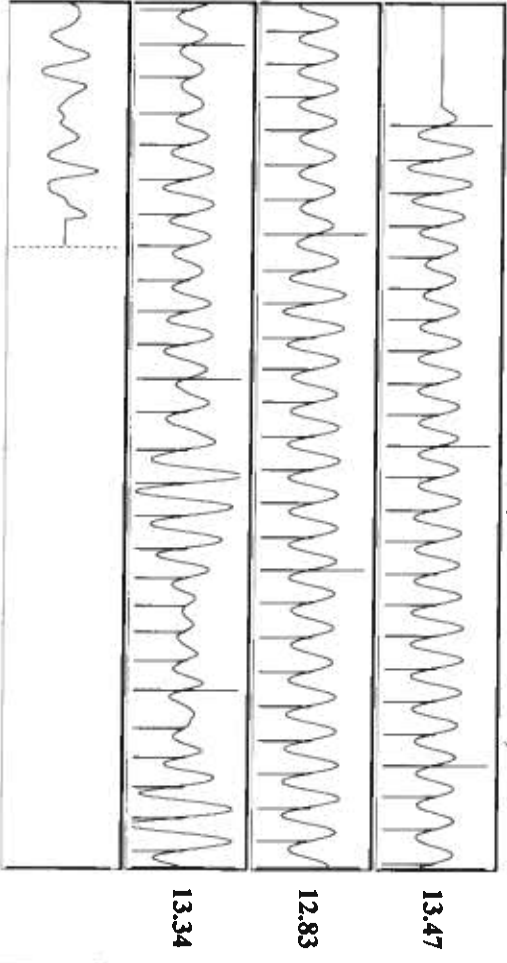
Production	Potential	Casing Pressure	Producing
Current	BBL/D	-3.7 psi (g)	3 Mscf/D
Water	BBL/D	0.1 psi	% Liquid 86 %
Gas	Mscf/D	1.00 min	
IPR Method	Vogel	Gas/Liquid Interface Pressure	
PBHP/SBHP	0.0	-2.5 psi (g)	
Production Efficiency			
Oil 40 deg API		Liquid Level Depth	
Water 1.05 Sp.Gr-H2O		2774.79 ft	
Gas 1.12 Sp.Gr-AIR		Pump Intake Depth	
Acoustic Velocity		5760.00 ft	
		Formation Depth	
		5700.00 ft	



Group: LBSLU Well: Johnson 4L (acquired on: 06/17/21 12:14:26)



Group: LBSLU Well: Johnson 4L (acquired on: 06/17/21 12:14:26)



Acoustic Velocity	845.07 ft/s	Joints counted	75
Joints Per Second	13.2042 Jts/Sec	Joints to liquid level	86.7121
Depth to liquid level	2774.79 ft	Filter Width	10.8041
Automatic Collar Count	Yes	Time to 1st Collar	0.28

June 24, 2021

Katherine McClurkan
Merit Energy Company, LLC
13727 Noel Road, Suite 1200
Dallas, TX 75240

Re: Temporary Abandonment
API 15-067-21669-00-00
Johnson 4-L8-30-38
SW/4 Sec.08-30S-38W
Grant County, Kansas

Dear Katherine McClurkan:

"Your temporary abandonment (TA) application for the well listed above has been approved. In accordance with K.A.R. 82-3-111 the TA status of this well will expire 06/24/2022.

- * If you return this well to service or plug it, please notify the District Office.
- * If you sell this well you are required to file a Transfer of Operator form, T-1.
- * If the well will remain temporarily abandoned, you must submit a new TA application, CP-111, before 06/24/2022.

You may contact me at the number above if you have questions.

Very truly yours,

Michael Maier"