

**KANSAS CORPORATION COMMISSION  
OIL & GAS CONSERVATION DIVISION**

KOLAR Document ID: 1572476

Form CP-111

July 2017

Form must be Typed

Form must be signed

All blanks must be complete

**TEMPORARY ABANDONMENT WELL APPLICATION**

OPERATOR: License# \_\_\_\_\_  
 Name: \_\_\_\_\_  
 Address 1: \_\_\_\_\_  
 Address 2: \_\_\_\_\_  
 City: \_\_\_\_\_ State: \_\_\_\_\_ Zip: \_\_\_\_\_ + \_\_\_\_\_  
 Contact Person: \_\_\_\_\_  
 Phone: ( \_\_\_\_\_ ) \_\_\_\_\_  
 Contact Person Email: \_\_\_\_\_  
 Field Contact Person: \_\_\_\_\_  
 Field Contact Person Phone: ( \_\_\_\_\_ ) \_\_\_\_\_

API No. 15- \_\_\_\_\_  
 Spot Description: \_\_\_\_\_  
 \_\_\_\_\_ - \_\_\_\_\_ - \_\_\_\_\_ - \_\_\_\_\_ Sec. \_\_\_\_\_ Twp. \_\_\_\_\_ S. R. \_\_\_\_\_  E  W  
 \_\_\_\_\_ feet from  N /  S Line of Section  
 \_\_\_\_\_ feet from  E /  W Line of Section  
 GPS Location: Lat: \_\_\_\_\_, Long: \_\_\_\_\_  
(e.g. xx.xxxxx) (e.g. -xxx.xxxxx)  
 Datum:  NAD27  NAD83  WGS84  
 County: \_\_\_\_\_ Elevation: \_\_\_\_\_  GL  KB  
 Lease Name: \_\_\_\_\_ Well #: \_\_\_\_\_  
 Well Type: (check one)  Oil  Gas  OG  WSW  Other: \_\_\_\_\_  
 SWD Permit #: \_\_\_\_\_  ENHR Permit #: \_\_\_\_\_  
 Gas Storage Permit #: \_\_\_\_\_  
 Spud Date: \_\_\_\_\_ Date Shut-In: \_\_\_\_\_

	Conductor	Surface	Production	Intermediate	Liner	Tubing
Size						
Setting Depth						
Amount of Cement						
Top of Cement						
Bottom of Cement						

Casing Fluid Level from Surface: \_\_\_\_\_ How Determined? \_\_\_\_\_ Date: \_\_\_\_\_  
 Casing Squeeze(s): \_\_\_\_\_ to \_\_\_\_\_ w / \_\_\_\_\_ sacks of cement, \_\_\_\_\_ to \_\_\_\_\_ w / \_\_\_\_\_ sacks of cement. Date: \_\_\_\_\_  
(top) (bottom) (top) (bottom)  
 Do you have a valid Oil & Gas Lease?  Yes  No  
 Depth and Type:  Junk in Hole at \_\_\_\_\_  Tools in Hole at \_\_\_\_\_ Casing Leaks:  Yes  No Depth of casing leak(s): \_\_\_\_\_  
(depth) (depth)  
 Type Completion:  ALT. I  ALT. II Depth of:  DV Tool: \_\_\_\_\_ w / \_\_\_\_\_ sacks of cement  Port Collar: \_\_\_\_\_ w / \_\_\_\_\_ sack of cement  
(depth) (depth)  
 Packer Type: \_\_\_\_\_ Size: \_\_\_\_\_ Inch Set at: \_\_\_\_\_ Feet  
 Total Depth: \_\_\_\_\_ Plug Back Depth: \_\_\_\_\_ Plug Back Method: \_\_\_\_\_

**Geological Data:**

Formation Name	Formation Top	Formation Base	Completion Information
1. _____	At: _____	to _____ Feet	Perforation Interval _____ to _____ Feet or Open Hole Interval _____ to _____ Feet
2. _____	At: _____	to _____ Feet	Perforation Interval _____ to _____ Feet or Open Hole Interval _____ to _____ Feet

~~UNDER PENALTY OF PERJURY I HEREBY ATTEST THAT THE INFORMATION CONTAINED HEREIN IS TRUE AND CORRECT TO THE BEST OF MY KNOWLEDGE~~

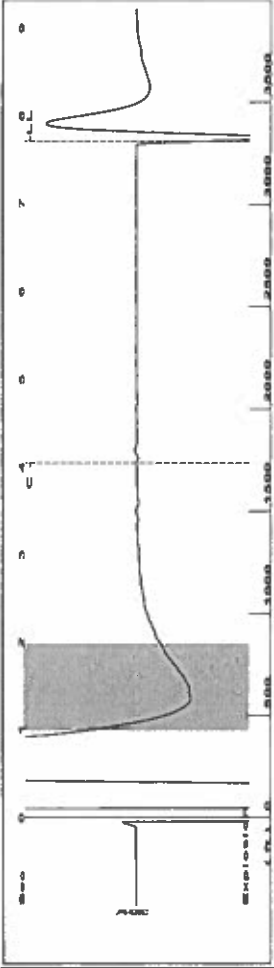
**Submitted Electronically**

<b>Do NOT Write in This Space - KCC USE ONLY</b>	Date Tested: _____	Results: _____	Date Plugged: _____	Date Repaired: _____	Date Put Back in Service: _____
	Review Completed by: _____ Comments: _____				
TA Approved: <input type="checkbox"/> Yes <input type="checkbox"/> Denied Date: _____					

**Mail to the Appropriate KCC Conservation Office:**

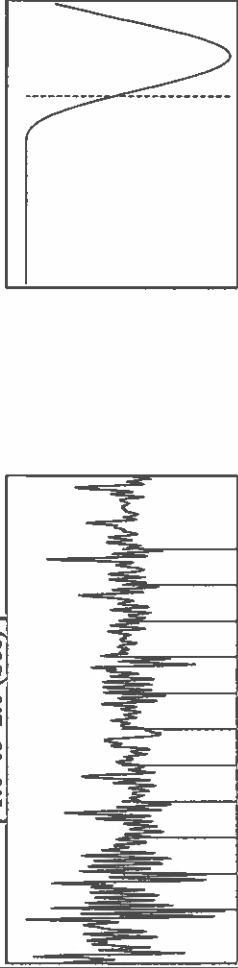
	KCC District Office #1 - 210 E. Frontview, Suite A, Dodge City, KS 67801	Phone 620.682.7933
	KCC District Office #2 - 3450 N. Rock Road, Building 600, Suite 601, Wichita, KS 67226	Phone 316.337.7400
	KCC District Office #3 - 137 E. 21st St., Chanute, KS 66720	Phone 620.902.6450
	KCC District Office #4 - 2301 E. 13th Street, Hays, KS 67601-2651	Phone 785.261.6250

Group: TAD Well: garden city t-5 (acquired on: 06/13/21 13:07:58)



Filter Type High Pass Automatic Collar Count Yes  
 Manual Acoustic Veloc 55.601 ft/s Manual JTS/sec 13.4953  
 Time 7.709 sec  
 Joints 104.298 Jts  
 Depth 3306.25 ft

1.0 to 2.0 (Sec)

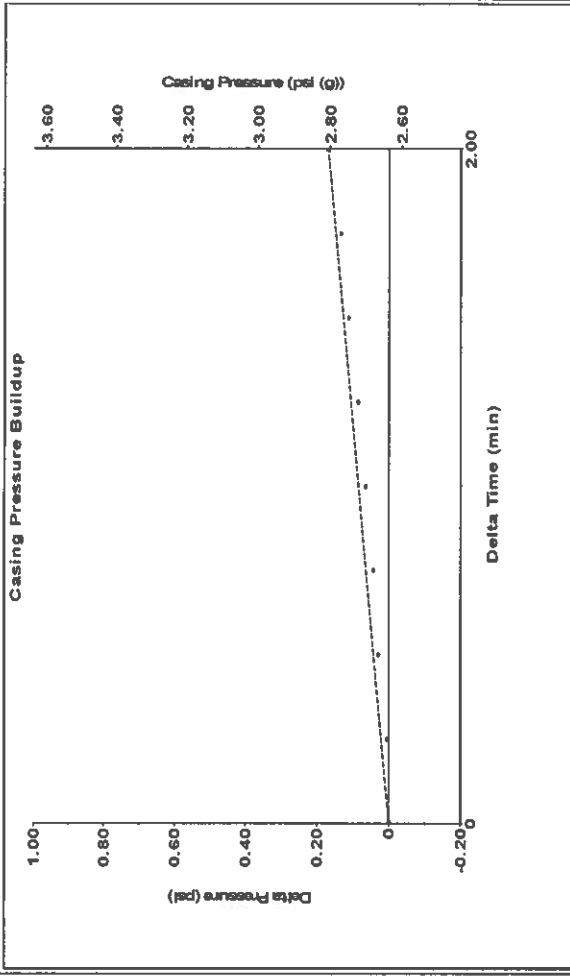


**Analysis Method: Automatic**

Group: TAD Well: garden city t-5 (acquired on: 06/13/21 13:07:58)

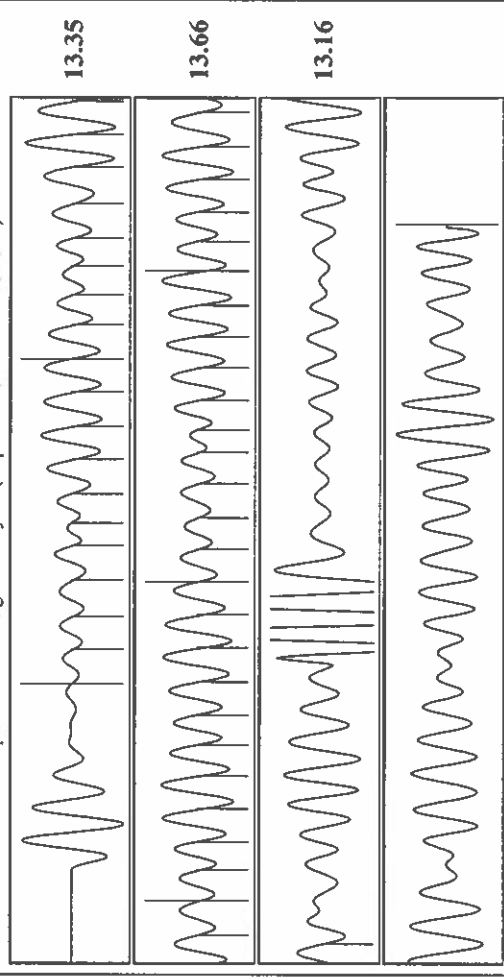
Production	Potential	Casing Pressure	Producing
Oil -*- BBL/D	2.6 psi (g)		Annular Gas Flow -*- Mscf/D
Water -*- BBL/D	Casing Pressure Buildup		% Liquid 89 %
Gas -*- Mscf/D	0.169 psi		
IPR Method Vogel	2.00 min		
PBHP/SBHP -*-	Gas/Liquid Interface Pressure		
Production Efficiency 0.0	4.9 psi (g)		
Oil 40 deg API	Liquid Level Depth		
Water 1.05 Sp.Gr:H2O	3306.25 ft		
Gas 1.11 Sp.Gr:AIR	Pump Intake Depth		
Acoustic Velocity 857.765 ft/s	Formation Depth		
	4413.00 ft		
Formation Submergence			
Total Gaseous Liquid Column HT (TVD)	1107 ft		
Equivalent Gas Free Liquid HT (TVD)	980 ft		
Acoustic Test			

Group: TA'D Well: garden city t-5 (acquired on: 06/13/21 13:07:58)



Change in Pressure 0.17 psi PT 6902 Range  
 Change in Time 2.00 min

Group: TA'D Well: garden city t-5 (acquired on: 06/13/21 13:07:58)



Acoustic Velocity 857.765 ft/s Joints counted 46  
 Joints Per Second 13.5294 Jts/sec Joints to liquid level 104.298  
 Depth to liquid level 3306.25 ft Filter Width 15.4953  
 Automatic Collar Count Yes Time to 1st Collar 0.644

June 24, 2021

Katherine McClurkan  
Merit Energy Company, LLC  
13727 NOEL ROAD, SUITE 1200  
DALLAS, TX 75240

Re: Temporary Abandonment  
API 15-055-22253-00-00  
Garden City T 5  
SE/4 Sec.29-23S-34W  
Finney County, Kansas

Dear Katherine McClurkan:

"Your temporary abandonment (TA) application for the well listed above has been approved. In accordance with K.A.R. 82-3-111 the TA status of this well will expire 06/24/2022.

- \* If you return this well to service or plug it, please notify the District Office.
- \* If you sell this well you are required to file a Transfer of Operator form, T-1.
- \* If the well will remain temporarily abandoned, you must submit a new TA application, CP-111, before 06/24/2022.

You may contact me at the number above if you have questions.

Very truly yours,

Michael Maier"