

KANSAS CORPORATION COMMISSION
OIL & GAS CONSERVATION DIVISION

TEMPORARY ABANDONMENT WELL APPLICATION

OPERATOR: License#
Name:
Address 1:
Address 2:
City: State: Zip:
Contact Person:
Phone:
Contact Person Email:
Field Contact Person:
Field Contact Person Phone:

API No. 15-
Spot Description:
Sec. Twp. S. R.
GPS Location: Lat: Long:
Datum: NAD27 NAD83 WGS84
County: Elevation:
Lease Name: Well #:
Well Type: Oil Gas OG WSW Other:
SWD Permit #: ENHR Permit #:
Gas Storage Permit #:
Spud Date: Date Shut-In:

Table with 7 columns: Conductor, Surface, Production, Intermediate, Liner, Tubing. Rows include Size, Setting Depth, Amount of Cement, Top of Cement, Bottom of Cement.

Casing Fluid Level from Surface: How Determined? Date:
Casing Squeeze(s): to w / sacks of cement, to w / sacks of cement. Date:
Do you have a valid Oil & Gas Lease? Yes No
Depth and Type: Junk in Hole at Tools in Hole at Casing Leaks: Yes No Depth of casing leak(s):
Type Completion: ALT. I ALT. II Depth of: DV Tool: w / sacks of cement Port Collar: w / sack of cement
Packer Type: Size: Inch Set at: Feet
Total Depth: Plug Back Depth: Plug Back Method:

Geological Data:

Table with 4 columns: Formation Name, Formation Top, Formation Base, Completion Information. Rows 1 and 2.

UNDER PENALTY OF PERJURY I HEREBY ATTEST THAT THE INFORMATION CONTAINED HEREIN IS TRUE AND CORRECT TO THE BEST OF MY KNOWLEDGE

Submitted Electronically

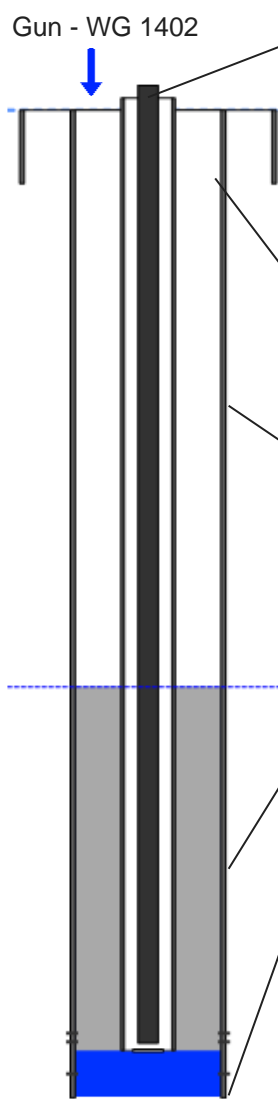
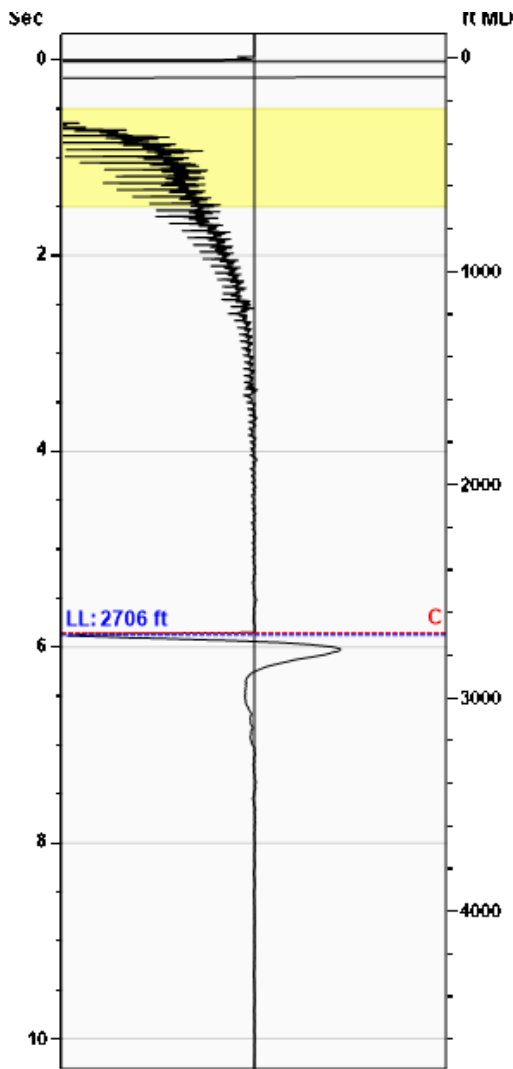
Do NOT Write in This Space - KCC USE ONLY
Date Tested: Results: Date Plugged: Date Repaired: Date Put Back in Service:
Review Completed by: Comments:
TA Approved: Yes Denied Date:

Mail to the Appropriate KCC Conservation Office:

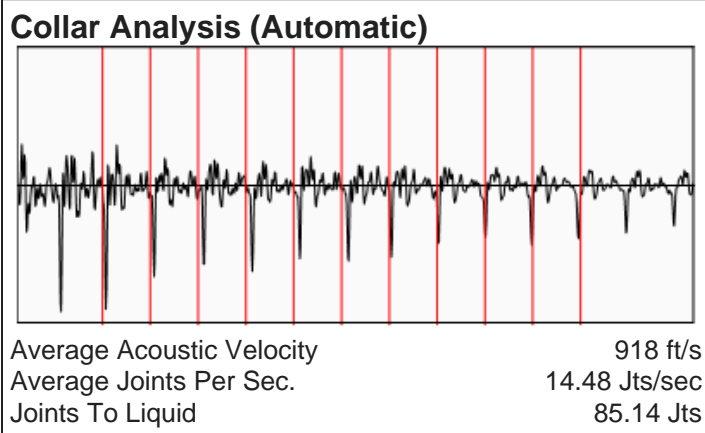
Table with 2 columns: Office Address, Phone. Rows for District Office #1, #2, #3, #4.

Liquid Level 2706 ft MD

Fluid Above Pump 1704 ft TVD
 Equivalent Gas Free Above Pump 1704 ft TVD



Production			
Date Entered	09/04/17		
	Current	Potential	
Oil	1	**	BBL/D
Water	1	**	BBL/D
Gas	**	**	Mscf/D
IPR Method	Vogel		
PBHP/SBHP	-0.00		
Producing Efficiency	0.00%		
Casing Pressure			
Pressure	-0.3 psi (g)		
Annular Gas Flow			
Gas Flow	0.0 Mscf/D		
Fluid Properties			
% Liquid Above Pump	100.00%		
% Liquid Below Pump	100.00%		
Depths			
Pump Intake Depth	4410 ft		
Formation Depth	4549 ft		
Wellbore Pressures			
PIP	573.0 psi (g)		
PBHP	636.2 psi (g)		
SBHP	**		
Gas/Liq Interface	1.2 psi (g)		



Casing Pressure Buildup

No Pressure Acquired

Casing Pressure -0.3 psi (g)
 Buildup -0.0 psi (g)
 Buildup Time 30 sec
 Gas Gravity from Collar Analysis (Automatic) 1.0524 Air = 1

Comments and Recommendations

Acoustic Test

Petroleum Property Services
 125 N. Market, #1251
 Wichita, KS 67202

Conservation Division
District Office No. 4
2301 E. 13th Street
Hays, KS 67601-2651



Phone: 785-261-6250
Fax: 785-625-0564
<http://kcc.ks.gov/>

Andrew J. French, Chairperson
Dwight D. Keen, Commissioner
Susan K. Duffy, Commissioner

Laura Kelly, Governor

June 25, 2021

CYNDE WOLF
Falcon Exploration, Inc.
125 N Market Ste 1251
WICHITA, KS 67202-1719

Re: Temporary Abandonment
API 15-063-21445-00-00
BEOUGHER 1-A
NE/4 Sec.26-13S-30W
Gove County, Kansas

Dear CYNDE WOLF:

"Your temporary abandonment (TA) application for the well listed above has been approved. In accordance with K.A.R. 82-3-111 the TA status of this well will expire 06/25/2022.

- * If you return this well to service or plug it, please notify the District Office.
- * If you sell this well you are required to file a Transfer of Operator form, T-1.
- * If the well will remain temporarily abandoned, you must submit a new TA application, CP-111, before 06/25/2022.

You may contact me at the number above if you have questions.

Very truly yours,

RICHARD WILLIAMS"