

KANSAS CORPORATION COMMISSION
OIL & GAS CONSERVATION DIVISION

TEMPORARY ABANDONMENT WELL APPLICATION

OPERATOR: License#
Name:
Address 1:
Address 2:
City: State: Zip:
Contact Person:
Phone:
Contact Person Email:
Field Contact Person:
Field Contact Person Phone:

API No. 15-
Spot Description:
Sec. Twp. S. R.
GPS Location: Lat: Long:
Datum:
County: Elevation:
Lease Name: Well #:
Well Type:
Spud Date: Date Shut-In:

Table with 7 columns: Conductor, Surface, Production, Intermediate, Liner, Tubing. Rows include Size, Setting Depth, Amount of Cement, Top of Cement, Bottom of Cement.

Casing Fluid Level from Surface: How Determined? Date:
Casing Squeeze(s): to w / sacks of cement, to w / sacks of cement. Date:
Do you have a valid Oil & Gas Lease?
Depth and Type: Junk in Hole at Tools in Hole at Casing Leaks:
Type Completion: ALT. I ALT. II Depth of: DV Tool: Port Collar:
Packer Type: Size: Inch Set at: Feet
Total Depth: Plug Back Depth: Plug Back Method:

Geological Data:

Table with 4 columns: Formation Name, Formation Top, Formation Base, Completion Information. Rows 1 and 2.

UNDER PENALTY OF PERJURY I HEREBY ATTEST THAT THE INFORMATION CONTAINED HEREIN IS TRUE AND CORRECT TO THE BEST OF MY KNOWLEDGE

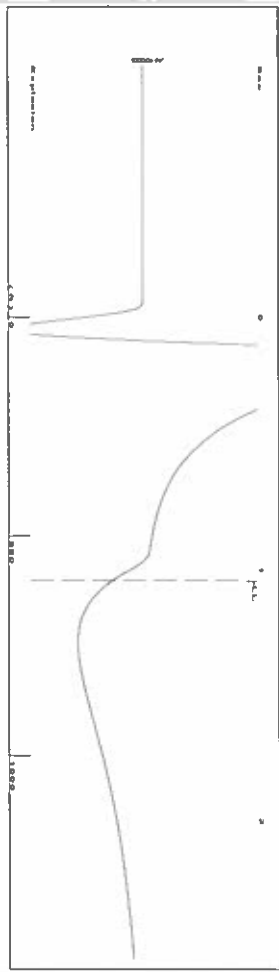
Submitted Electronically

Form with fields: Do NOT Write in This Space - KCC USE ONLY, Date Tested, Results, Date Plugged, Date Repaired, Date Put Back in Service, Review Completed by, Comments, TA Approved, Date.

Mail to the Appropriate KCC Conservation Office:

Table with 2 columns: Office Address, Phone Number. Rows for District Offices #1, #2, #3, and #4.

Group: SUBLETTE Well: Eubank B-3 (acquired on: 06/24/21 11:42:13)



Time 1.048 sec
 Joints 19,0095 Jts
 Depth 602.60 ft

Liquid level calculated with
 user supplied Acoustic Velocity

Acoustic Velocity 1150 ft/s

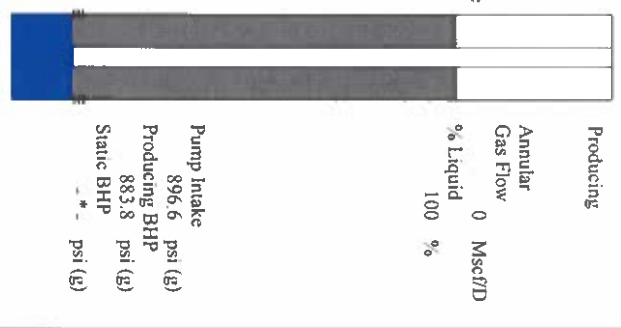
Analysis Method: Acoustic Velocity

Group: SUBLETTE Well: Eubank B-3 (acquired on: 06/24/21 11:42:13)

Production	Potential	Casing Pressure	Producing
Current	BBL/D	105.7 psi (g)	Annular
Oil	BBL/D	Casing Pressure Buildup	Gas Flow
Water	Mscf/D	-0.457 psi	% Liquid
Gas	Mscf/D	1.00 min	100 %
IPR Method	Vogel	Gas/Liquid Interface Pressure	
PBHP/SBHP		107.9 psi (g)	
Production Efficiency	0.0	Liquid Level Depth	
		602.60 ft	
Oil 40 deg API		Pump Intake Depth	
Water 1.05 Sp.Gr.H2O		2998.00 ft	
Gas 0.83 Sp.Gr.AIR		Formation Depth	
Acoustic Velocity	1150 ft/s	2957.00 ft	

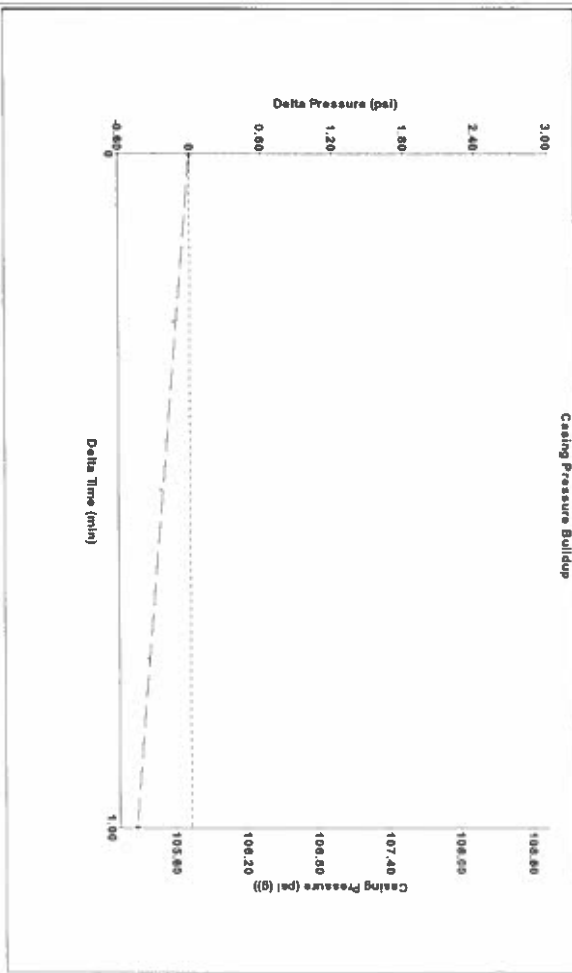
Formation Submergence
 Total Gaseous Liquid Column HT (TVD)
 Equivalent Gas Free Liquid HT (TVD)
 6/24/21C

2395 ft
 2395 ft



Pump Intake
 896.6 psi (g)
 Producing BHP
 883.8 psi (g)
 Static BHP
 - * - psi (g)

Group: SUBLETTE Well: Eubank B-3 (acquired on: 06/24/21 11:42:13)



Change in Pressure -0.46 psi
 Change in Time 1.00 min
 PT14679
 Range
 0 - ? psi

Group: SUBLETTE Well: Eubank B-3 (acquired on: 06/24/21 11:42:13)

Entered Acoustic Velocity for Liquid Level depth determination

June 28, 2021

Katherine McClurkan
Merit Energy Company, LLC
13727 Noel Road, Suite 1200
Dallas, TX 75240

Re: Temporary Abandonment
API 15-081-21464-00-00
Eubank B 3
SW/4 Sec.23-28S-34W
Haskell County, Kansas

Dear Katherine McClurkan:

Your application for Temporary Abandonment (TA) for the above-listed well is denied for the following reasons(s):

High Fluid Level

Pursuant to K.A.R. 82-3-111, the well must be plugged, or returned to service, or obtain temporary abandonment status by 07/28/2021.

This deadline does NOT override any compliance deadline given to you in any Commission Order.

You may contact me if you have any questions.

Sincerely,
Kenny Sullivan
KCC DISTRICT 1