

KANSAS CORPORATION COMMISSION
OIL & GAS CONSERVATION DIVISION

TEMPORARY ABANDONMENT WELL APPLICATION

OPERATOR: License#
Name:
Address 1:
Address 2:
City: State: Zip:
Contact Person:
Phone:
Contact Person Email:
Field Contact Person:
Field Contact Person Phone:

API No. 15-
Spot Description:
Sec. Twp. S. R.
GPS Location: Lat: Long:
Datum: NAD27 NAD83 WGS84
County: Elevation:
Lease Name: Well #:
Well Type: Oil Gas OG WSW Other:
SWD Permit #: ENHR Permit #:
Gas Storage Permit #:
Spud Date: Date Shut-In:

Table with 7 columns: Conductor, Surface, Production, Intermediate, Liner, Tubing. Rows include Size, Setting Depth, Amount of Cement, Top of Cement, Bottom of Cement.

Casing Fluid Level from Surface: How Determined? Date:
Casing Squeeze(s): to w / sacks of cement, to w / sacks of cement. Date:
Do you have a valid Oil & Gas Lease? Yes No
Depth and Type: Junk in Hole at Tools in Hole at Casing Leaks: Yes No Depth of casing leak(s):
Type Completion: ALT. I ALT. II Depth of: DV Tool: w / sacks of cement Port Collar: w / sack of cement
Packer Type: Size: Inch Set at: Feet
Total Depth: Plug Back Depth: Plug Back Method:

Geological Data:

Table with 4 columns: Formation Name, Formation Top, Formation Base, Completion Information. Rows 1 and 2.

UNDER PENALTY OF PERJURY I HEREBY ATTEST THAT THE INFORMATION CONTAINED HEREIN IS TRUE AND CORRECT TO THE BEST OF MY KNOWLEDGE

Submitted Electronically

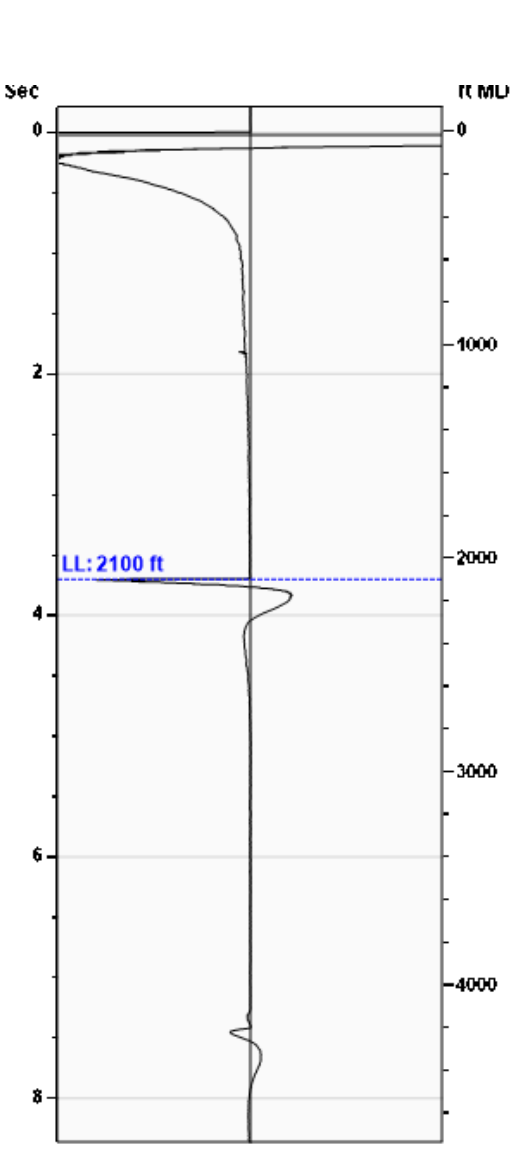
Do NOT Write in This Space - KCC USE ONLY
Date Tested: Results: Date Plugged: Date Repaired: Date Put Back in Service:
Review Completed by: Comments:
TA Approved: Yes Denied Date:

Mail to the Appropriate KCC Conservation Office:

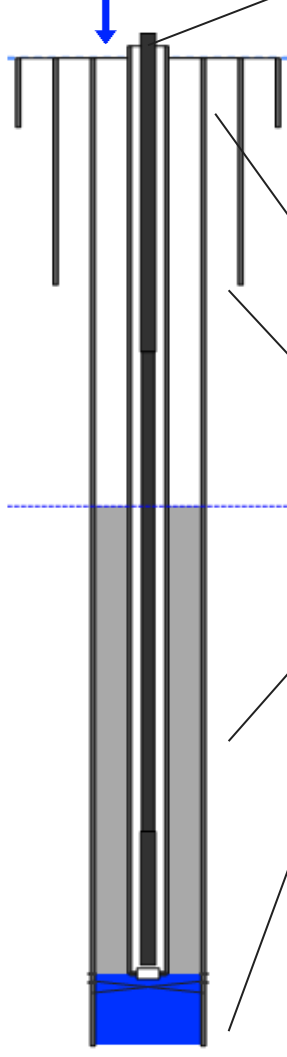
Table with 3 columns: District Office, Address, Phone. Rows for District Office #1, #2, #3, #4.

Liquid Level **2100 ft MD**

Fluid Above Pump **2191 ft TVD**
Equivalent Gas Free Above Pump **2191 ft TVD**



Gun - WG 1402



Production			
Date Entered			10/15/16
	Current	Potential	
Oil	33	**	BBL/D
Water	300	**	BBL/D
Gas	**	**	Mscf/D
IPR Method			Vogel
PBHP/SBHP			-0.00
Producing Efficiency			0.00%

Casing Pressure	
Pressure	26.5 psi (g)

Annular Gas Flow	
Gas Flow	0.0 Mscf/D

Fluid Properties	
% Liquid Above Pump	100.00%
% Liquid Below Pump	100.00%

Depths	
Pump Intake Depth	4291 ft
Formation Depth	4347 ft

Wellbore Pressures	
PIP	756.7 psi (g)
PBHP	782.1 psi (g)
SBHP	**
Gas/Liq Interface	29.2 psi (g)

Acoustic Velocity	
Acoustic Velocity	1132 ft/s
Joints Per Sec.	18.08 Jts/sec
Joints To Liquid	67.10 Jts
Gas Gravity	0.8618 Air = 1
Entered From Known Acoustic Velocity	

Casing Pressure Buildup	
No Pressure Acquired	
Casing Pressure	26.5 psi (g)
Buildup	0.0 psi (g)
Buildup Time	0 sec
Gas Gravity from Acoustic Velocity	0.8618 Air = 1

Comments and Recommendations
Acoustic Test

Petroleum Property Services
125 N. Market, #1251
Wichita, KS 67202

Conservation Division
District Office No. 4
2301 E. 13th Street
Hays, KS 67601-2651



Phone: 785-261-6250
Fax: 785-625-0564
<http://kcc.ks.gov/>

Andrew J. French, Chairperson
Dwight D. Keen, Commissioner
Susan K. Duffy, Commissioner

Laura Kelly, Governor

June 30, 2021

CYNDE WOLF
Falcon Exploration, Inc.
125 N MARKET STE 1252
WICHITA, KS 67202-1719

Re: Temporary Abandonment
API 15-063-21327-00-00
F C BROOKOVER 2
NE/4 Sec.27-13S-30W
Gove County, Kansas

Dear CYNDE WOLF:

"Your temporary abandonment (TA) application for the well listed above has been approved. In accordance with K.A.R. 82-3-111 the TA status of this well will expire 06/30/2022.

- * If you return this well to service or plug it, please notify the District Office.
- * If you sell this well you are required to file a Transfer of Operator form, T-1.
- * If the well will remain temporarily abandoned, you must submit a new TA application, CP-111, before 06/30/2022.

You may contact me at the number above if you have questions.

Very truly yours,

RICHARD WILLIAMS"