

KANSAS CORPORATION COMMISSION
OIL & GAS CONSERVATION DIVISION

TEMPORARY ABANDONMENT WELL APPLICATION

OPERATOR: License#
Name:
Address 1:
Address 2:
City: State: Zip:
Contact Person:
Phone:
Contact Person Email:
Field Contact Person:
Field Contact Person Phone:

API No. 15-
Spot Description:
Sec. Twp. S. R.
GPS Location: Lat: Long:
Datum: NAD27 NAD83 WGS84
County: Elevation:
Lease Name: Well #:
Well Type: Oil Gas OG WSW Other:
SWD Permit #: ENHR Permit #:
Gas Storage Permit #:
Spud Date: Date Shut-In:

Table with 7 columns: Conductor, Surface, Production, Intermediate, Liner, Tubing. Rows include Size, Setting Depth, Amount of Cement, Top of Cement, Bottom of Cement.

Casing Fluid Level from Surface: How Determined? Date:
Casing Squeeze(s): to w / sacks of cement, to w / sacks of cement. Date:
Do you have a valid Oil & Gas Lease? Yes No
Depth and Type: Junk in Hole at Tools in Hole at Casing Leaks: Yes No Depth of casing leak(s):
Type Completion: ALT. I ALT. II Depth of: DV Tool: w / sacks of cement Port Collar: w / sack of cement
Packer Type: Size: Inch Set at: Feet
Total Depth: Plug Back Depth: Plug Back Method:

Geological Date:

Table with 4 columns: Formation Name, Formation Top, Formation Base, Completion Information. Rows 1 and 2.

UNDER PENALTY OF PERJURY I HEREBY ATTEST THAT THE INFORMATION CONTAINED HEREIN IS TRUE AND CORRECT TO THE BEST OF MY KNOWLEDGE

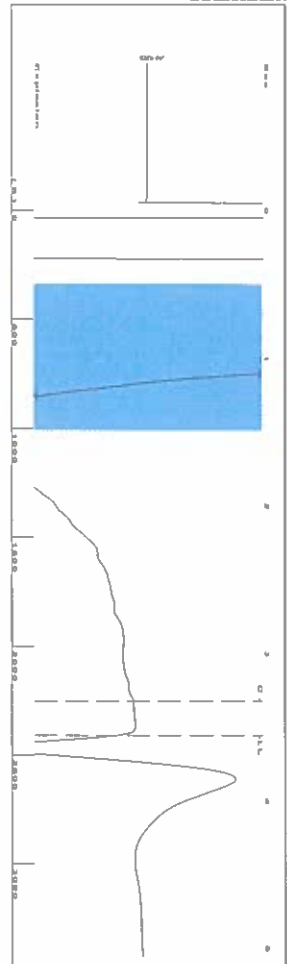
Submitted Electronically

Form with fields: Do NOT Write in This Space - KCC USE ONLY, Date Tested, Results, Date Plugged, Date Repaired, Date Put Back in Service, Review Completed by, Comments, TA Approved: Yes Denied, Date.

Mail to the Appropriate KCC Conservation Office:

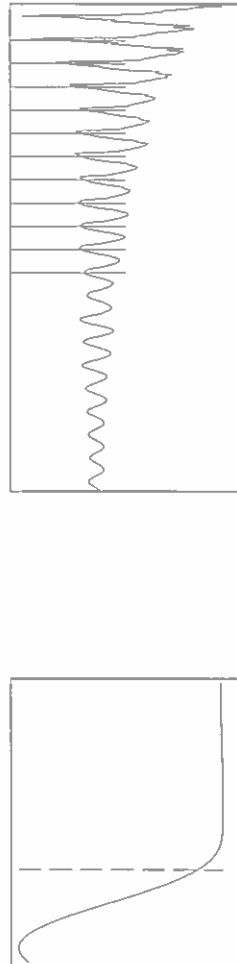
Table with 2 columns: Office Address, Phone. Rows for District Office #1, #2, #3, #4.

Group: SUBLETTE Well: Burton A-5 (acquired on: 06/29/21 11:12:05)



Filter Type High Pass Automatic Collar Count Yes  
 Manual Acoustic Velo 326.36 ft/s Manual JTS/sec 20.9205  
 Time 3.559 sec  
 Joints 75.997 Jts  
 Depth 2409.11 ft

[ 0.5 to 1.5 (Sec) ]



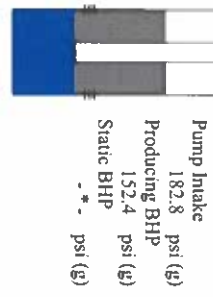
Analysis Method: Automatic

Group: SUBLETTE Well: Burton A-5 (acquired on: 06/29/21 11:12:05)

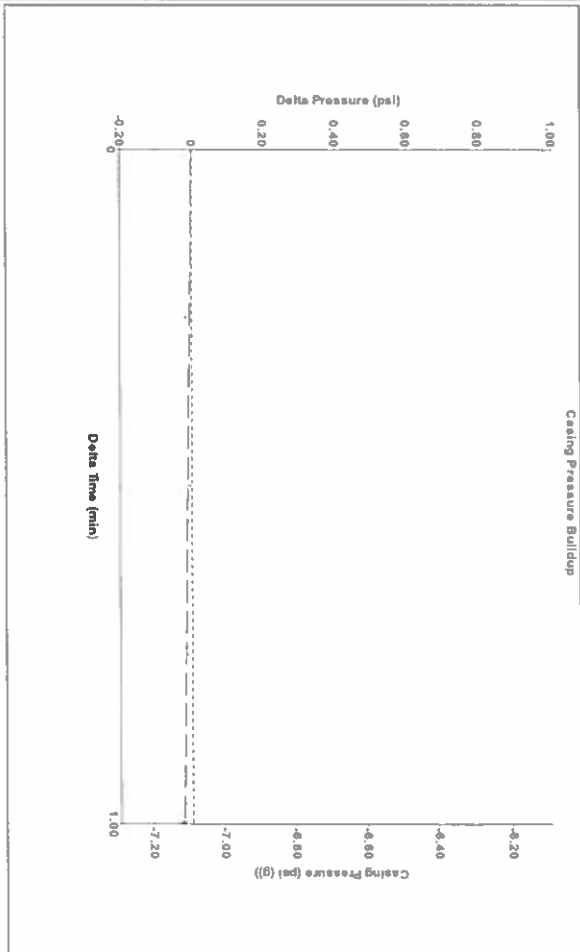
Production	Potential	Casing Pressure	Producing
Oil -*-	BBL/D	-7.1 psi (g)	Annular
Water -*-	BBL/D	-0.024 psi	Gas Flow
Gas -*-	MscFD	1.00 min	% Liquid
		Gas/Liquid Interface Pressure	100 %
JPR Method	Vogel	-6.7 psi (g)	
PBH/ SBHP	-*-		
Production Efficiency	0.0		

Liquid Level Depth 2409.11 ft  
 Pump Inake Depth 2972.00 ft  
 Formation Depth 2881.00 ft  
 Acoustic Velocity 1353.81 ft/s

Formation Submergence  
 Total Gaseous Liquid Column HT (TVD) 563 ft  
 Equivalent Gas Free Liquid HT (TVD) 563 ft  
 6/29/21

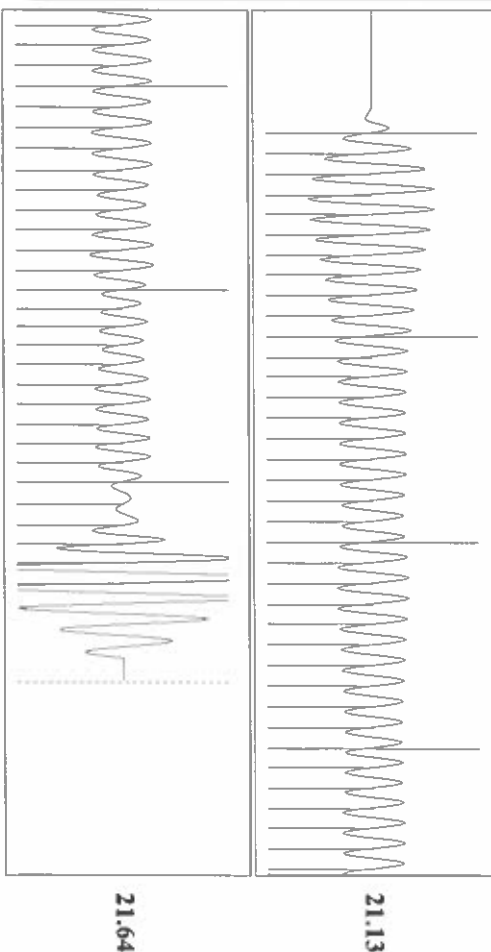


Group: SUBLETTE Well: Burton A-5 (acquired on: 06/29/21 11:12:05)



Change in Pressure -0.02 psi PT14679  
 Change in Time 1.00 min Range 0 - ? psi

Group: SUBLETTE Well: Burton A-5 (acquired on: 06/29/21 11:12:05)



Acoustic Velocity 1353.81 ft/s Joints counted 65  
 Joints Per Second 21.3535 Jts/sec Joints to liquid level 75.997  
 Depth to liquid level 2409.11 ft Filter Width 18.9205  
 Automatic Collar Count Yes Time to 1st Collar 0.284 3.328

June 30, 2021

Katherine McClurkan  
Merit Energy Company, LLC  
13727 Noel Road, Suite 1200  
Dallas, TX 75240-7362

Re: Temporary Abandonment  
API 15-081-21471-00-00  
Burton A 5  
NE/4 Sec.06-29S-34W  
Haskell County, Kansas

Dear Katherine McClurkan:

"Your temporary abandonment (TA) application for the well listed above has been approved. In accordance with K.A.R. 82-3-111 the TA status of this well will expire 06/30/2022.

- \* If you return this well to service or plug it, please notify the District Office.
- \* If you sell this well you are required to file a Transfer of Operator form, T-1.
- \* If the well will remain temporarily abandoned, you must submit a new TA application, CP-111, before 06/30/2022.

You may contact me at the number above if you have questions.

Very truly yours,

Kenny Sullivan"