

GEOLOGIC REPORT

DAVID J. GOLDAK

WICHITA, KANSAS
Scale 1:240 (5"=100') Imperial
Measured Depth Log

Well Name: Okeson #1-36
API: 15-199-20450-0000
Location: Section 36 - T15S - R42W
License Number: _____
Spud Date: 06 / 12 / 2019
Surface Coordinates: 335' FNL and 9758' FWL
SW - NE - NW - NW
Bottom Hole Coordinates: _____
Ground Elevation (ft): 3824' K.B. Elevation (ft): 3837'
Logged Interval (ft): 3800' To: 5255' Total Depth (ft): 5255'
Formation: Mississippian - St Louis
Type of Drilling Fluid: Chemical - Mud-Co
Region: Wallace Co., KS
Drilling Completed: 06 / 19 / 2019

Printed by MudLog from WellSight Systems 1-800-447-1534 www.WellSight.com

OPERATOR

Company: Stelbar Oil Corporation
Address: 1625 N. Waterfront Pkwy., Suite 200
Wichita, Kansas 67206-6602

GEOLOGIST

Name: David J. Goldak
Company: D. J. GOLDAK, INC.
Address: 12427 W Ridgepoint Cir
Wichita, Kansas 67235

General Info

CONTRACTOR: Sterling Drilling, Rig #5

BIT RECORD:

No.	Size	Make	Jets	Out	Feet	Hours
1	12-1/4	JZ-HAT417GC	4-16s	342'	460'	3.00
2	7-7/8	Taurus-TXT516	5-15s	5255'	4795'	81.25

SURVEYS: 460'-0.75, 5255'-1.00

GENERAL DRILLING & PUMP INFORMATION:

Collars: 18 joints (6.25"x2.25"): 530.01'
Drilling: 14,000-18,000 lbs on bit and 90-100 RPM.
Pumping: 62-65 S/M; 9.1-9.6 B/M; 800-1000 psi

Daily Status

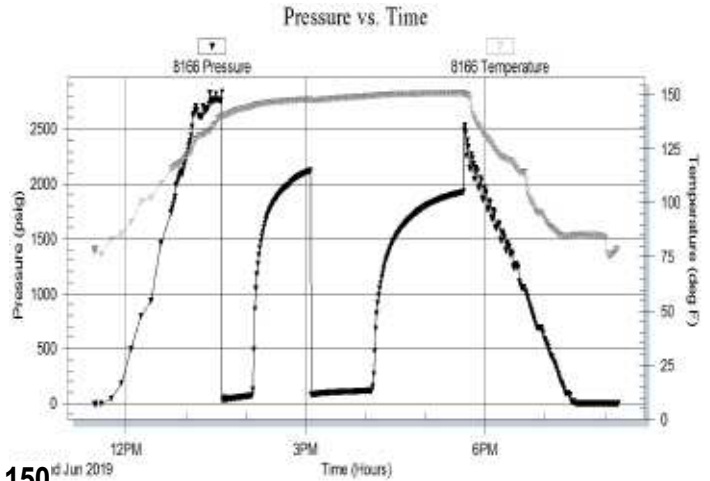
06/12/19 - Spud at 6:15 PM; Set 8-5/8" csg @ 456'
 06/13/19 - 460' WOC; DP @ 6:15 PM
 06/14/19 - 1,242' Drilling
 06/15/19 - 3,091' Drilling; Displace @ 3,537'
 06/16/19 - 4,080' Drilling
 06/17/19 - 4,755' Drilling; Lost circ (full returns) @ 5,210'
 06/18/19 - 5,210' Gaining full returns; TD @ 5,255'; Log well
 06/19/19 - 5,255' WOO; DST #1 @ 5,255'; Plug well

DST #1: 5,207' - 5,255' (Miss. Sand)
 30" - 60" - 60" - 90"

IF: Blow building to 4 inches
ISI: No return blow
FF: Blow building to 3.5 inches
FSI: No return blow

RECOVERY: 225' Total Fluid, consisting of:
 110' WCM (40% W & 60% M)
 115' MCW (90% O & 10% M); Chlorides: 17,000 ppm
 Sampler: 2000 ml Water @ 20 psi

SIP: 2122-1926; FP: 28-71, 79-116; HP: 2836-2530; BHT: 150



ROCK TYPES

	Anhy
	Bent
	Brec
	Cht
	Clyst
	Coal
	Congl
	Dol

	Gyp
	Igne
	Lmst
	Meta
	Mrlst
	Salt
	Shale
	Shcol

	Shgy
	Sltst
	Ss
	Till
	Carb sh
	Dol
	Dtd
	Gry sh

	Sandylms
	Shale
	Sltstn
	Shlyslts
	Sltyslts
	Lms

ACCESSORIES

MINERAL

- Anhy
- Arggrn
- Arg
- Bent
- Bit
- Breclfrag
- Calc
- Carb
- Chtdk
- Chtlt
- Dol
- Feldspar
- Ferrpel
- Ferr
- Glau
- Gyp
- Hvymin
- Kaol
- Marl
- Minxl
- Nodule
- Phos
- Pyr

- Salt
- Sandy
- Silt
- Sil
- Sulphur
- Tuff
- Chlorite
- Dol
- Sand
- Sltly

FOSSIL

- Algae
- Amph
- Belm
- Bioclst
- Brach
- Bryozoa
- Cephal
- Coral
- Crin
- Echin
- Fish
- Foram

- Fossil
- Gastro
- Oolite
- Ostra
- Pelec
- Pellet
- Pisolite
- Plant
- Strom
- Fuss
- Oomold

STRINGER

- Anhy
- Arg
- Bent
- Coal
- Dol
- Gyp
- Ls
- Mrst
- Sltstrg
- Ssstrg
- Carbsh

- Clystn
- Dol
- Grysh
- Gryslt
- Lms
- Sandylms
- Sh
- Sltstn

TEXTURE

- Boundst
- Chalky
- Cryxln
- Earthy
- Finexln
- Grainst
- Lithogr
- Microxln
- Mudst
- Packst
- Wackest

OTHER SYMBOLS

POROSITY TYPE

- Earthy
- Fenest
- Fracture
- Inter
- Moldic
- Organic
- Pinpoint
- Vuggy

SORTING

- Well
- Moderate
- Poor

ROUNDING

- Rounded
- Subrnd
- Subang
- Angular

OIL SHOWS

- Even
- Spotted
- Ques
- Dead
- Gas show

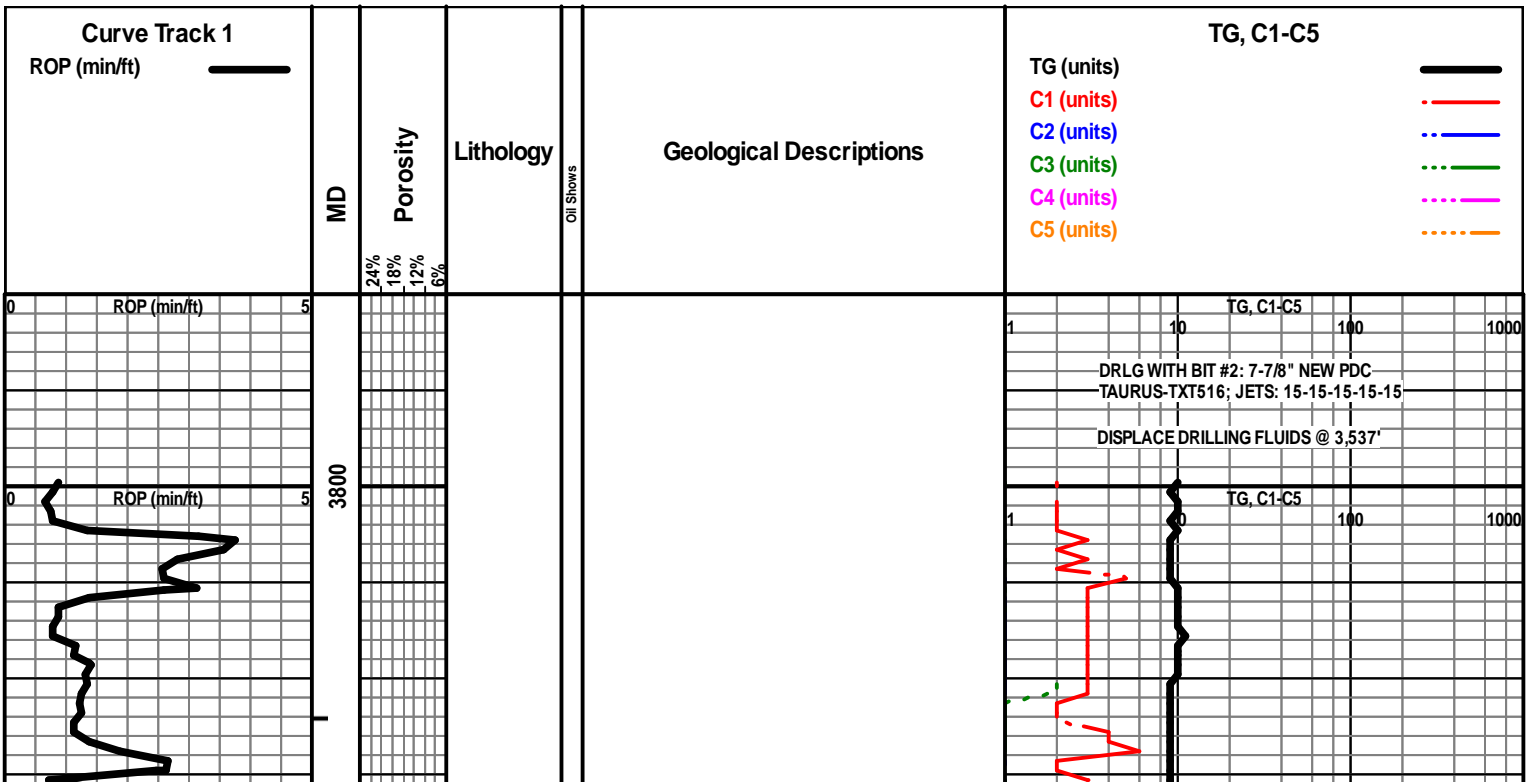
INTERVALS

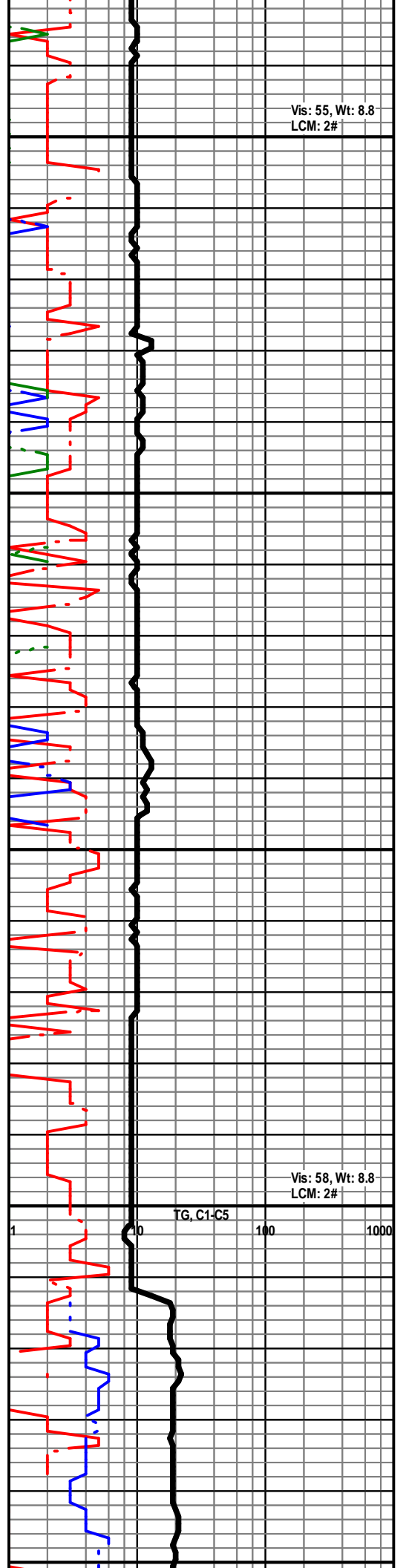
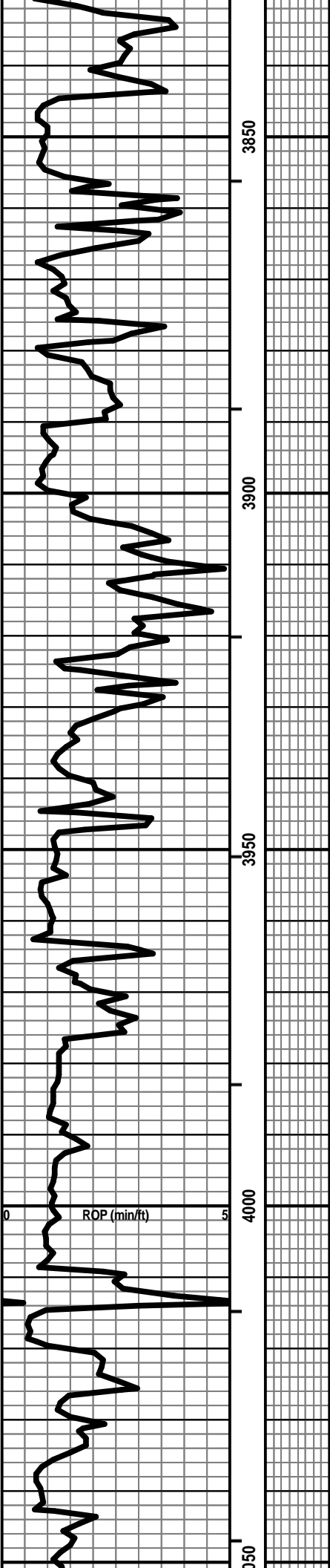
- Core
- Dst

- Dst_1_t
- Dst_1_b
- Dst

EVENTS

- Rft
- Sidewall
- Conn

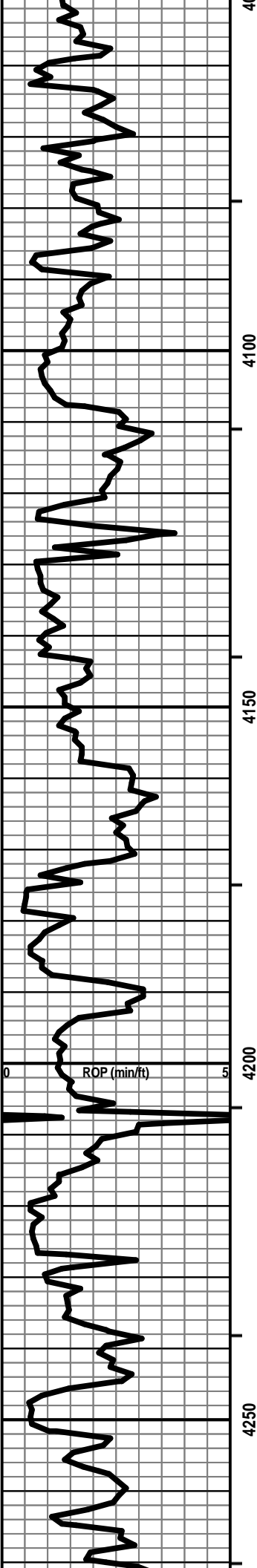




Vis: 55, Wt: 8.8
LCM: 2#

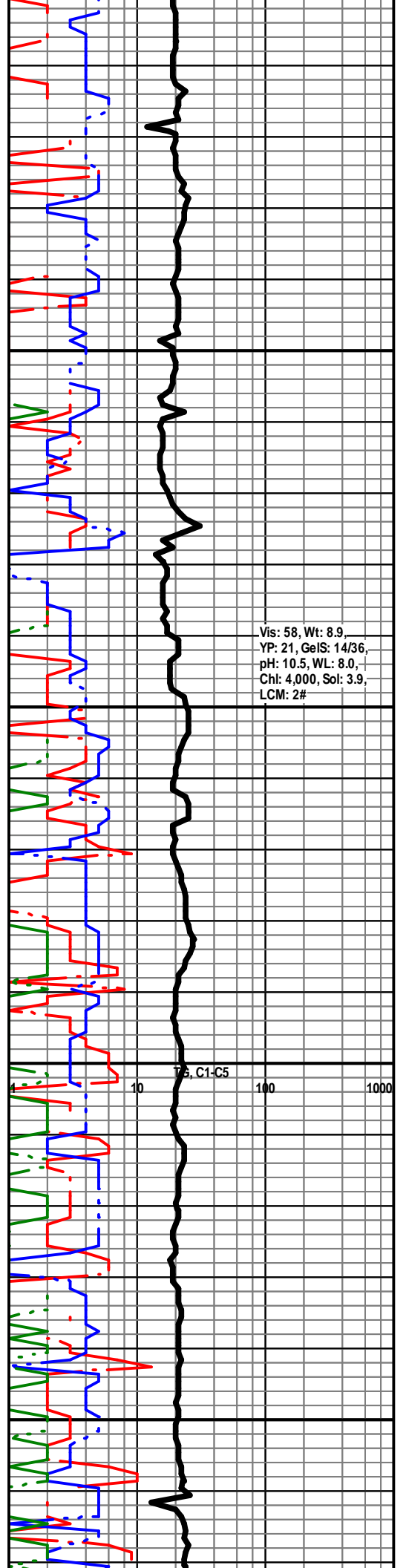
Vis: 58, Wt: 8.8
LCM: 2#

TG, C1-C5

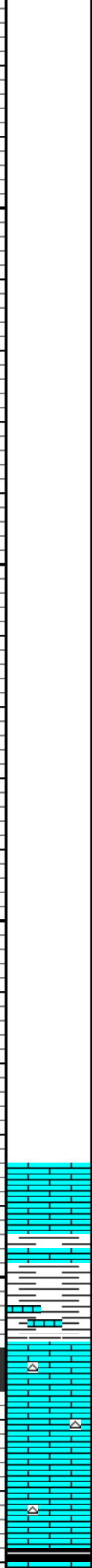
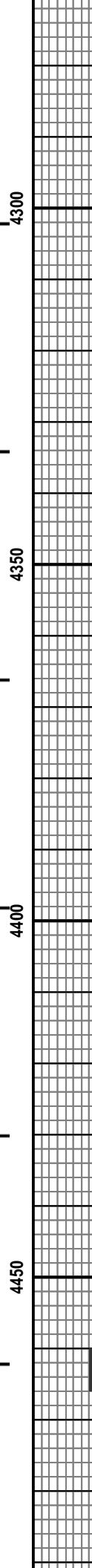
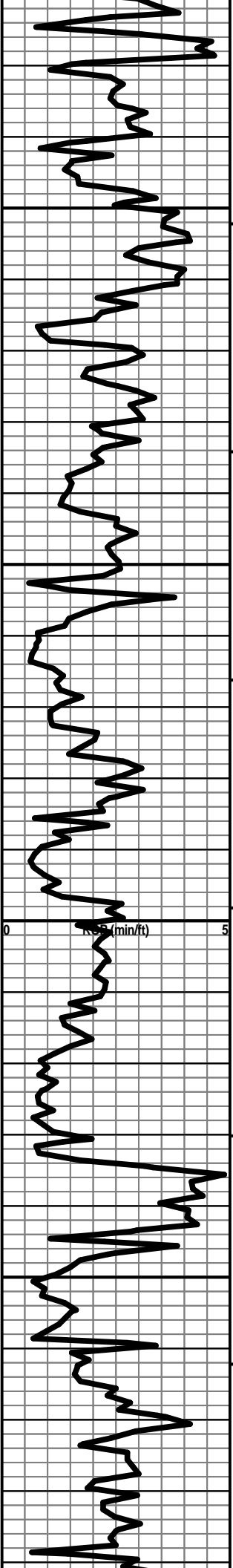


— HEEBNER 4121 (-284)

— LANSING 4158 (-321)



Vis: 58, Wt: 8.9,
YP: 21, GelS: 14/36,
pH: 10.5, WL: 8.0,
Chl: 4,000, Sol: 3.9,
LCM: 2#

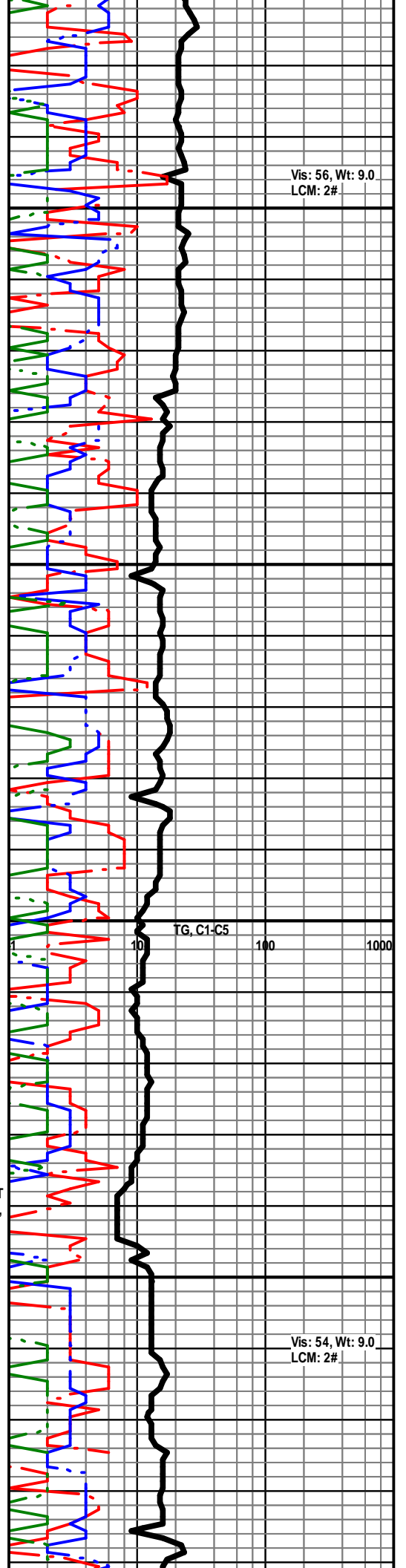


— DRUM LS 4319 (-482)

LS - CRM / TAN / GY, MOT IN PT, F XLN, OOL IN PT, SCAT
INTPART / INTXLN POR, SCAT P OOM POR (CAVINGS?),
PRED DNS, NS W/SH

SH - VARICOL W/LS- TAN / CRM / BRN, MOT IN PT, VF
/ F XLN, OOL IN PT, SL FOSS, CHKY IN PT, TR P INTXLN
POR, PRED DNS, SCAT P SHOW ASP, NO ODOR, TR
SPTY BLK STN, PRED NS W/ SCAT CHT - WHT / LT GY

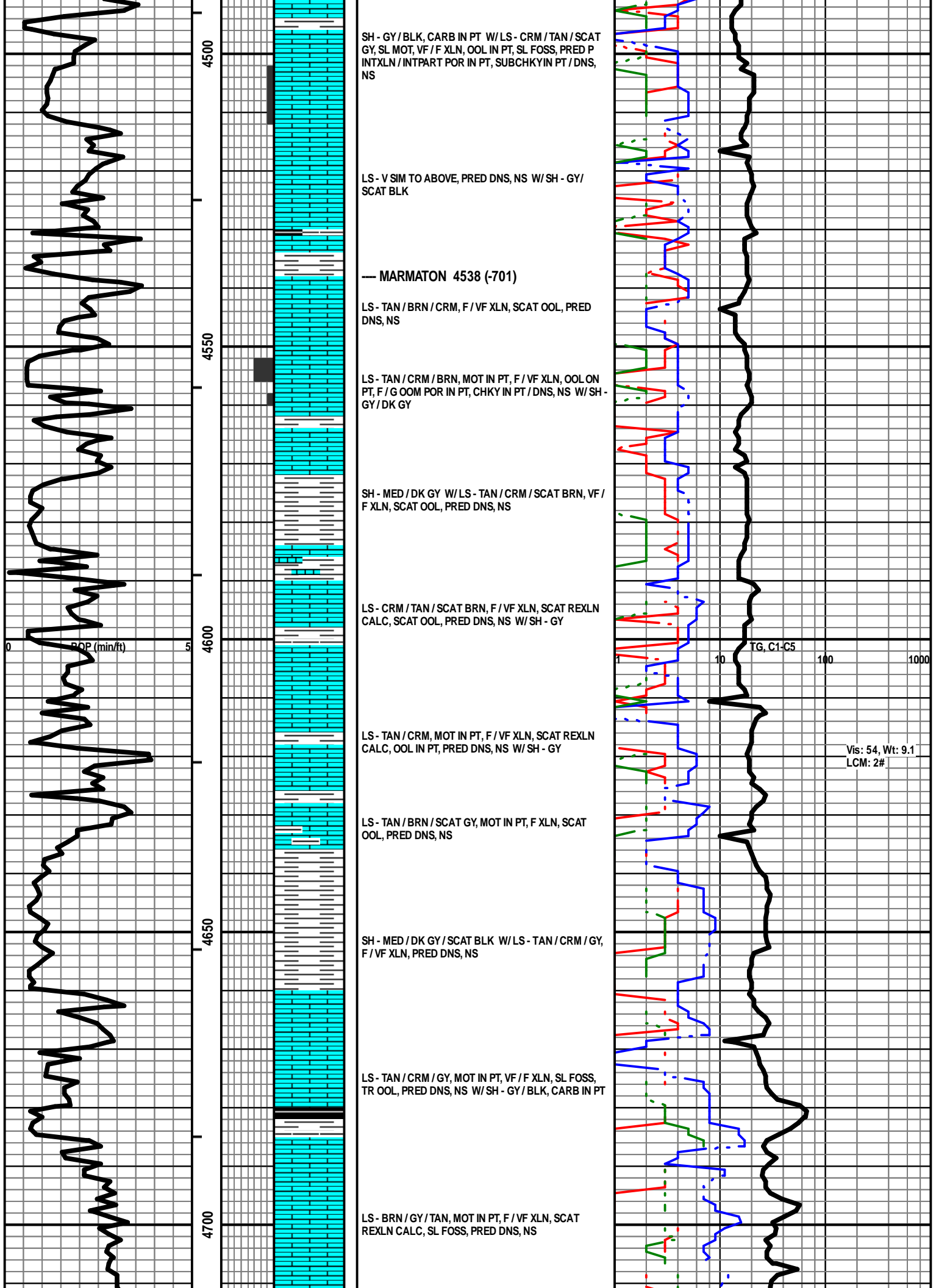
LS - V SIM TO ABOVE, PRED DNS, NS W/TR CHT -
WHT / LT GY



Vis: 56, Wt: 9.0
LCM: 2#

TG, C1-C5
1 10 100 1000

Vis: 54, Wt: 9.0
LCM: 2#



SH - GY / BLK, CARB IN PT W / LS - CRM / TAN / SCAT GY, SL MOT, VF / F XLN, OOL IN PT, SL FOSS, PRED P INTXLN / INTPART POR IN PT, SUBCHKYIN PT / DNS, NS

LS - V SIM TO ABOVE, PRED DNS, NS W / SH - GY / SCAT BLK

— MARMATON 4538 (-701)

LS - TAN / BRN / CRM, F / VF XLN, SCAT OOL, PRED DNS, NS

LS - TAN / CRM / BRN, MOT IN PT, F / VF XLN, OOL ON PT, F / G OOM POR IN PT, CHKY IN PT / DNS, NS W / SH - GY / DK GY

SH - MED / DK GY W / LS - TAN / CRM / SCAT BRN, VF / F XLN, SCAT OOL, PRED DNS, NS

LS - CRM / TAN / SCAT BRN, F / VF XLN, SCAT REXLN CALC, SCAT OOL, PRED DNS, NS W / SH - GY

LS - TAN / CRM, MOT IN PT, F / VF XLN, SCAT REXLN CALC, OOL IN PT, PRED DNS, NS W / SH - GY

LS - TAN / BRN / SCAT GY, MOT IN PT, F XLN, SCAT OOL, PRED DNS, NS

SH - MED / DK GY / SCAT BLK W / LS - TAN / CRM / GY, F / VF XLN, PRED DNS, NS

LS - TAN / CRM / GY, MOT IN PT, VF / F XLN, SL FOSS, TR OOL, PRED DNS, NS W / SH - GY / BLK, CARB IN PT

LS - BRN / GY / TAN, MOT IN PT, F / VF XLN, SCAT REXLN CALC, SL FOSS, PRED DNS, NS

TG, C1-C5 10 100 1000

Vis: 54, Wt: 9.1 LCM: 2#

LS - TAN / BRN / GY, MOT IN PT, F / VF XLN, TR FOSS, SUBCHKY IN PT, PRED DNS, NS W/ SH - LT / DK GY

Vis: 52
Wt: 9.4
LCM: 2#

SH - BLK, CARB W/LS - CRM / TAN / SCAT BRN, F XLN, FOSS IN PT, PRED DNS, ARGIL IN PT, NS

— CHEROKEE SH 4747 (-910)

SH - BLK / GY, PRED CARB W/LS - TAN / GY/ SCAT CRM, F / VF XLN, OOL IN PT, PRED DNS, NS

LS - TAN / CRM / GY, MOT IN PT, F / VF XLN, OOL IN PT, TR P INTXLN POR, SUBCHKY IN PT, PRED DNS, NS W/ SH - GY/ SCAT BLK, CARB IN PT W/ TR COAL

Vis: 52
Wt: 9.4
YP: 18
GelS: 12/35
pH: 10.5
WL: 8.0
Chl: 4,500
Sol: 7.5
LCM: 2#

LS - TAN / BRN / GY, F / VF XLN, SL FOSS, AREN IN PT, PRED DNS, NS W/ SCAT SS - GY / BRN, MOT IN PT, VF GY, CALC W/ SH - GY / BLK, CARB IN PT

LS - TAN / BRN / GY, MOT IN PT, F XLN, SCAT REXLN CALC, PRED DNS, NS W/ SCAT CHT - GY W/ SH - GY / BLK, CARB IN PT

LS - TAN / BRN / GY, MOT IN PT, F / VF XLN, SL FOSS, SCAT OOL, PRED DNS, NS W/ SH - GY / BLK, CARB IN PT

SH - MED / DK GY / BLK, SLTY IN PT

— ATOKA 4860 (-1023)

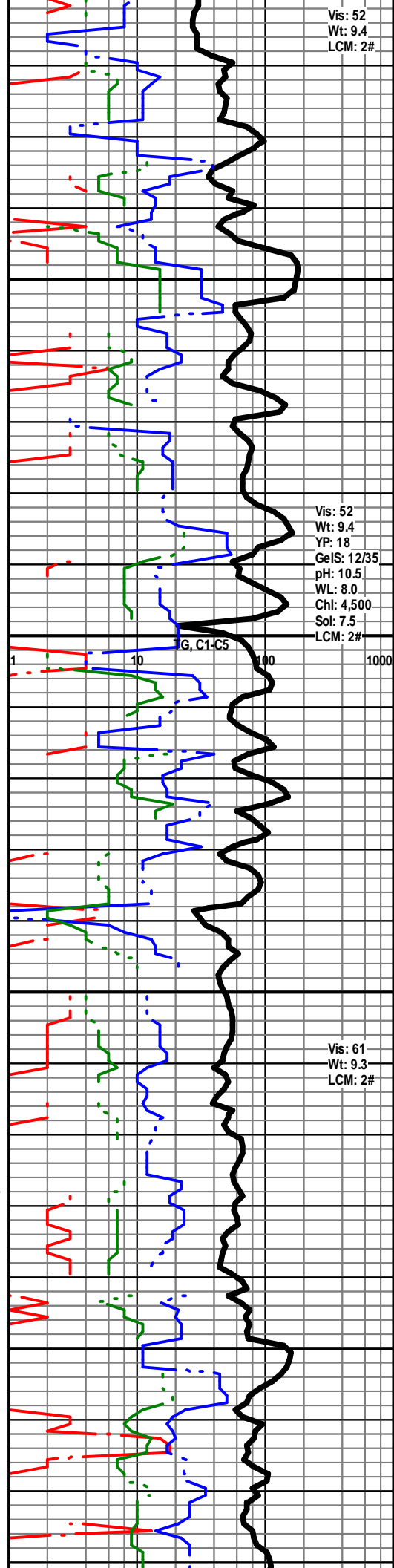
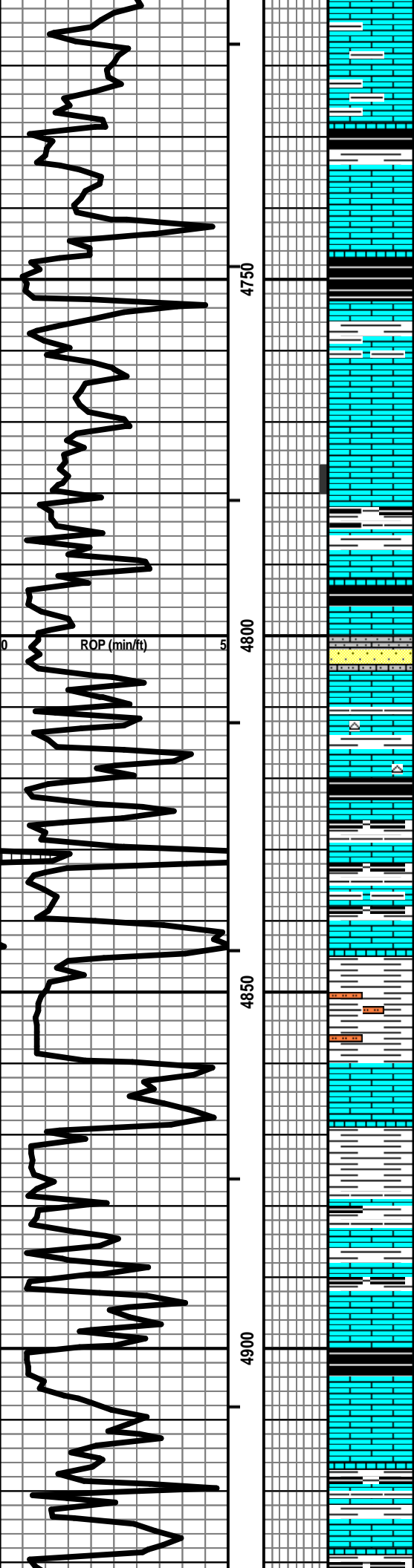
LS - BRN / GY, F XLN, SL FOSS, PRED DNS, NS

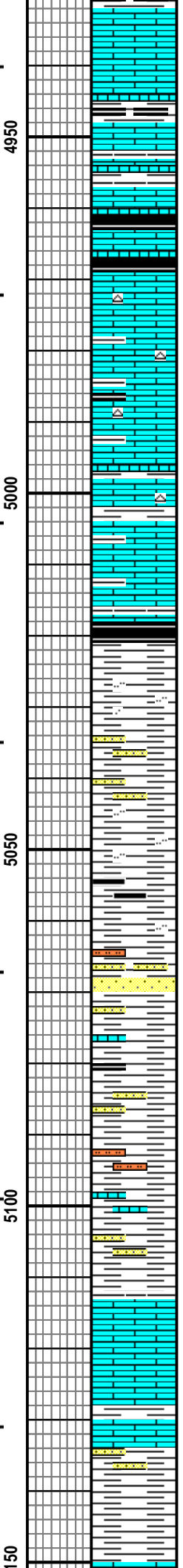
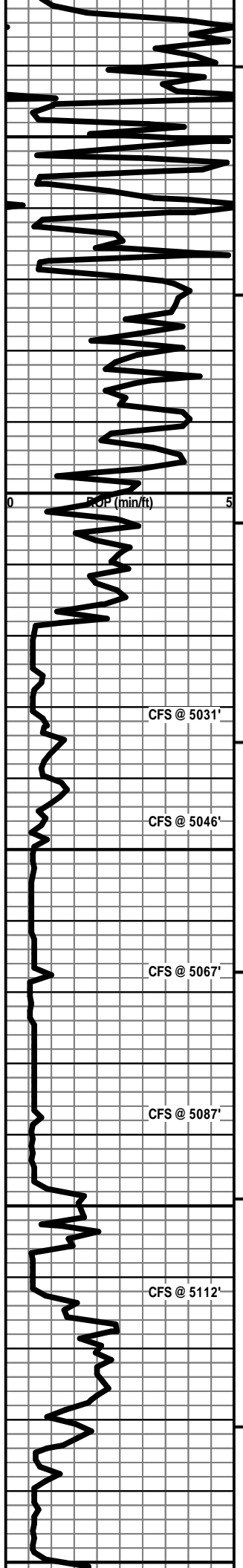
Vis: 61
Wt: 9.3
LCM: 2#

PRED SH - DK GY / BLK W/LS - GY / BRN, MOT IN PT, F XLN, PRED DNS, NS

LS - LT / DK GY / SCAT TAN, MOT IN PT, F XLN, SCAT REXLN CALC, PRED DNS, NS W/ SH - BLK, CARB

LS - LT / DK GY / BRN, MOT IN PT, F XLN, ARGIL IN PT, PRED DNS, NS W/ SH - GY / BLK, CARB IN PT





LS - LT / DK GY, SCAT TAN / BRN, MOT IN PT, F XLN, SCAT REXLN CALC, PRED DNS, NS W/ SH - GY / BLK, CARB IN PT

LS - GY / BRN / TAN, PRED MOT, F XLN, FOSS IN PT, PRED DNS, NS W/ SH - GY / BLK, CARB IN PT

LS - TAN / CRM / GY / SCAT BRN, MOT IN PT, F / VF XLN, FOSS IN PT, SUBCHKY IN PT, PRED DNS, NS W/ SCAT CHT - TAN / BRN W/ SH - GY / BLK

LS - GY / BRN / TAN, MOT IN PT, PRED F XLN, SL FOSS, PRED DNS, NS W/ SCAT CHT - TAN / BRN W/ SH - GY / BLK

LS - AS ABOVE, PRED DNS, NS W/ SH

— MORROW SHALE 5018 (-1181)

SH - BLK / GY, CARB IN PT, SLTY IN PT W/ TR SS - GY / CRM, SLT / VF GR, CALC, ARGIL IN PT, NO VIS POR, NS

SH - MED / DK GY / SCAT BLK, SLTY IN PT W/ SCAT SS - GY / CRM, SLT / VF GR, CALC, NO VIS POR, NS W/ SCAT SS - LT GY, F / C GR, P SRD, SR, CALC, SH FRAG IN PT, SCAT PYR, TR GLAUC, P/ NO POR, NS

PRED SH - MED / DK GY, SLTY IN PT W/ SCAT COAL W/ SCAT SLTST - GY / GRN W/ SS - GRN, SLT / VF / SCAT F GR, MIC, GLAUC, NO VIS POR, NS

SS - GRN, SLT / VF / SCAT F GR, MIC, GLAUC, NO VIS POR, NS W/ SH - MED / DK GY W/ LS - GY / TAN, F / VF XLN, DNS W/ TR CARB SH + COAL

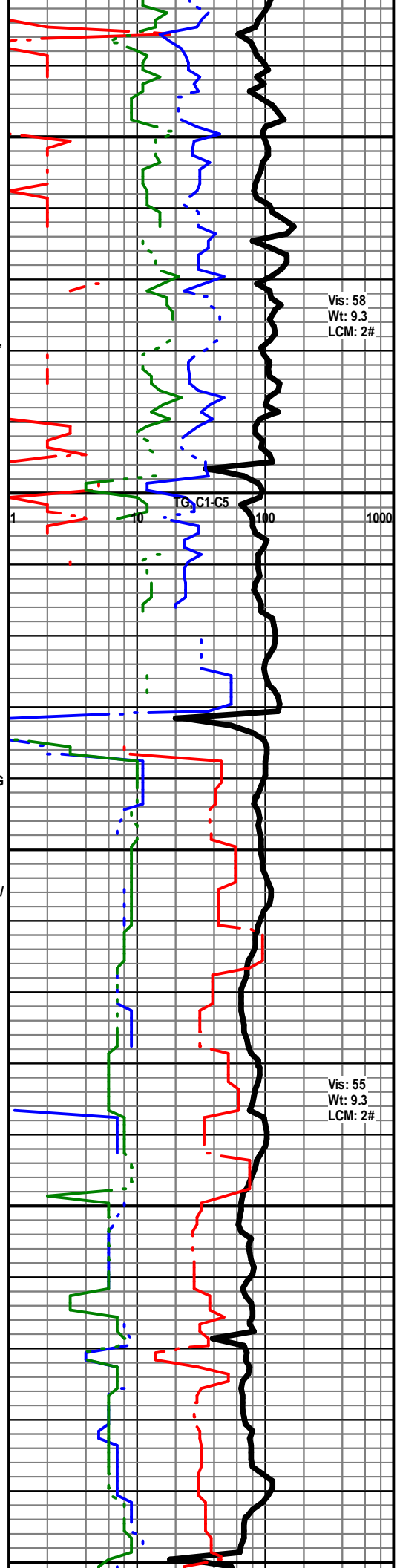
PRED SH + SLTST - GY / GRN / BLK W/ SCAT SS - GY / TAN, MOT, F / C GR, PSRTD, CALC, SCAT GLAUC + PYR, NO VIS POR, NS W/ SCAT LS - GY / TAN, MOT, F XLN, AREN IN PT, DNS, NS

— MORROW LIMESTONE 5113 (-1276)

ABNT SH + SLTST - AS ABOVE W/ LS - CRM / TAN / GY, MOT, F XLN, FOSS + OOL, SCAT CHKY, PRED DNS, NS

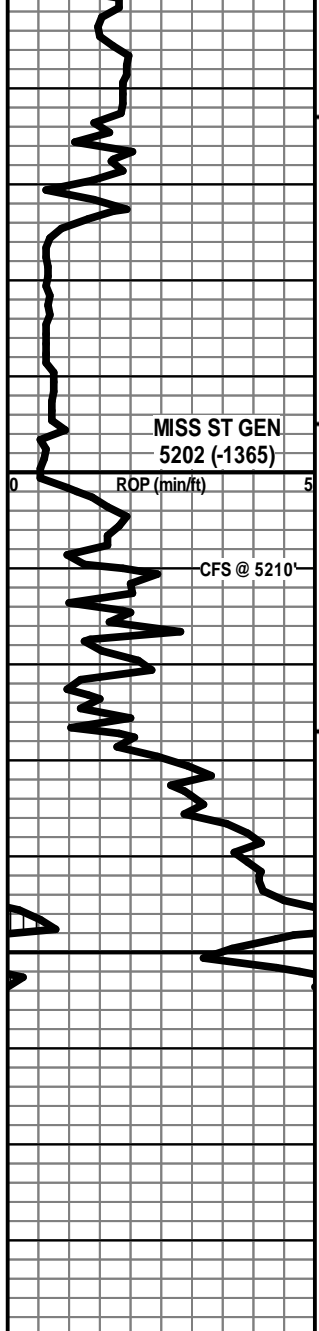
LS - CRM / TAN / GY, MOT, F XLN, FOSS + OOL, SCAT CHKY, PRED DNS, NS W/ SH - GY / GRN / BLK W/ SCAT SS - GY, VF / F / M GR, F / PSRTD, CALC, GLAUC, VP / NO VIS POR, NS

SH - GY / GRN / BLK W/ LS - CRM / TAN, MOT, F / VF XLN, FOSS + OOL, CHKY IN PT, GLAUC IN PT, PRED



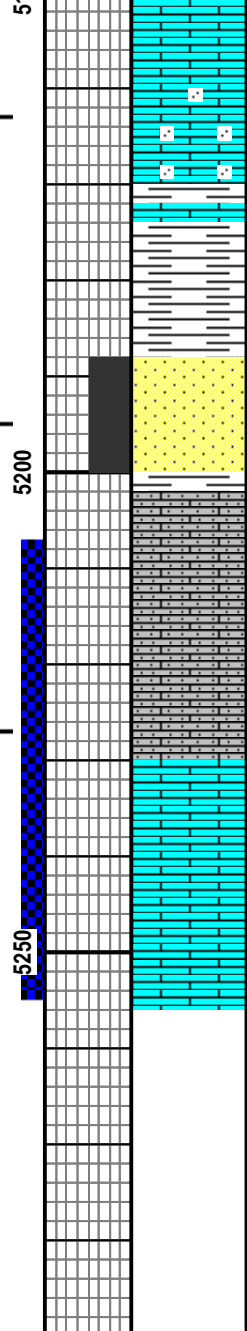
Vis: 58
Wt: 9.3
LCM: 2#

Vis: 55
Wt: 9.3
LCM: 2#



MISS ST GEN
5202 (-1365)

CFS @ 5210'



DNS, NS

LS - CRM / TAN / BRN / GY, MOT, F XLN, FOSS + OOL, AREN IN PT, SCAT CHKY, GLAUC IN PT, PRED DNS, NS

SH - GY / GRN W/ ABNT SS - LT GY / WHT / SCAT TAN, VF GR, W SRTD, SA / R, SL CALC / PRED SIL CEM, G INTGR POR, V FRI IN PT, NS

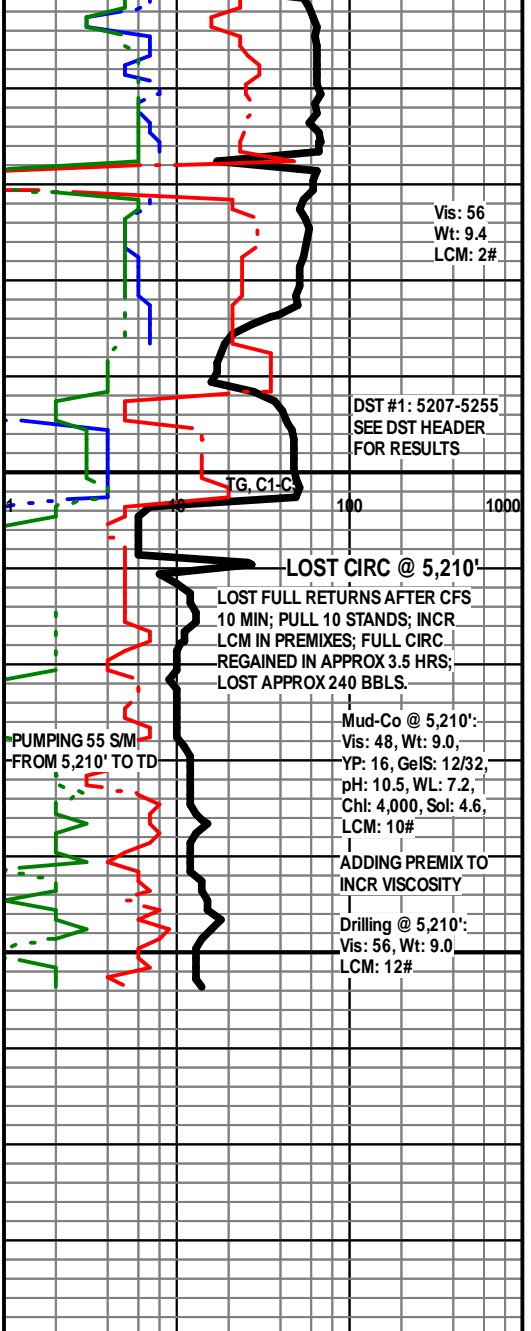
SS - AS ABOVE W/ SCAT LS - WHT / CRM, VF XLN, AREN (VF QTZ GR), FNLY OOL, SUBCHKY, NS

ABNT SH + TRIP TRASH W/ SCAT LS - WHT / CRM, VF XLN, AREN (VF QTZ GR), FNLY OOL, SUBCHKY, NS W/ SCAT SS - AS ABOVE, NS

LS - WHT / CRM, VF XLN, AREN (VF QTZ GR), FNLY OOL, SUBCHKY, NS W/ LS - CRM / TAN, VF / F XLN, OOL IN PT (MED / LRG OOL), AREN IN PT, SCAT SUBCHKY / PRED DNS, NS

LS - CRM / TAN, VF / F XLN, OOL IN PT (MED / LRG OOL), AREN IN PT, SCAT SUBCHKY / PRED DNS, NS

TOTAL DEPTH 5255 (-1418)



Vis: 56
Wt: 9.4
LCM: 2#

DST #1: 5207-5255
SEE DST HEADER
FOR RESULTS

LOST CIRC @ 5,210'
LOST FULL RETURNS AFTER CFS
.10 MIN; PULL 10 STANDS; INCR
LCM IN PREMIXES; FULL CIRC
REGAINED IN APPROX 3.5 HRS;
LOST APPROX 240 BBLS.

PUMPING 55 S/M
FROM 5,210' TO TD

Mud-Co @ 5,210':
Vis: 48, Wt: 9.0,
YP: 16, GeIS: 12/32,
pH: 10.5, WL: 7.2,
Chl: 4,000, Sol: 4.6,
LCM: 10#

ADDING PREMIX TO
INCR VISCOSITY

Drilling @ 5,210':
Vis: 56, Wt: 9.0
LCM: 12#