

**OPERATOR**

Company: Charles N. Griffin  
Address: PO Box 347  
Pratt, KS 67124

Contact Geologist:  
Contact Phone Nbr:

Well Name: #1 Addie  
Location: Section 28-29S-15W  
Pool:  
State: Kansas

API: 15-151-22484  
Field: Croft  
Country: USA

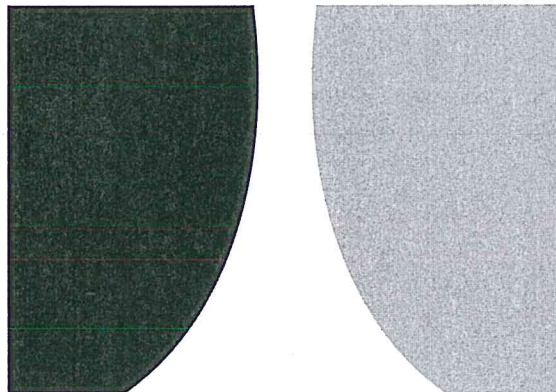
Scale 1:240 Imperial

Well Name: #1 Addie  
Surface Location: Section 28-29S-15W  
Bottom Location:  
API: 15-151-22484  
License Number:  
Spud Date: 3/29/2019 Time: 4:30 PM  
Region: Pratt County  
Drilling Completed: 4/1/2019 Time: 4:00 PM  
Surface Coordinates: 1850' FSL & 260' FWL  
Bottom Hole Coordinates:  
Ground Elevation: 1988.00ft  
K.B. Elevation: 1999.00ft  
Logged Interval: 3800.00ft To: 4826.00ft  
Total Depth: 4826.00ft  
Formation:  
Drilling Fluid Type: Chemical (MudCo)

**SURFACE CO-ORDINATES**

Well Type: Vertical  
Longitude: Latitude:  
N/S Co-ord: 1850' FSL  
E/W Co-ord: 260' FWL

**LOGGED BY**



**TERRATECH**  
ENERGY SERVICE, LLC

Company: TerraTech Energy Service LLC.  
Address: 1632 S. West St. Suite 12  
Wichita, KS 67208

Phone Nbr: 316-617-3959  
Logged By: Geologist

Name: Bruce Reed

**CONTRACTOR**

**CONTRACTOR**

Contractor:	WW Drilling		
Rig #:	14		
Rig Type:	mud rotary		
Spud Date:	3/29/2019	Time:	4:30 PM
TD Date:	4/1/2019	Time:	4:00 PM
Rig Release:	4/2/2019	Time:	8:30 PM

**ELEVATIONS**

K.B. Elevation:	1999.00ft	Ground Elevation:	1988.00ft
K.B. to Ground:	11.00ft		

**NOTES**

Surface Casing: 8-5/8" at 250'  
 Production Casing: 5-1/2" at 4811'

Daily Penetration:    03/26/19    Spud @ 4:30 PM  
                                  03/27/19    267'  
                                  03/28/19    2025'  
                                  03/29/19    2910'  
                                  03/30/19    3700'  
                                  03/31/19    4350'  
                                  04/01/19    4680'    RTD @ 4:00 PM  
                                  04/02/19    4826'    Rig Released @ 8:30 PM

**FORMATION TOPS**

Formation	Sample Top	Datum	Log Top	Datum	Comparison*
Heebner	3897'	-1898	3899'	-1900	+1
Brown Lime	4063'	-2064	4061'	-2062	flat
Lansing	4077'	-2078	4077'	-2078	-1
Stark	4338'	-2339	4337'	-2338	-3
Base KC	4472'	-2473	4470'	-2471	-3
Pawnee	4530'	-2531	4532'	-2533	-2
Cherokee	4568'	-2569	4569'	-2570	-3
Mississippian	4629'	-2630	4629'	-2630	+1
Viola	4658'	-2659	4658'	-2659	+8
Simpson	4763'	-2764	4764'	-2765	-17

\*Griffin Management, #2-29 Hirt Farms, 100' S NE SE Section 29-29S-15W, Pratt County, Kansas

**ROCK TYPES**

 Cht	 Lmst fw7> shale, gry	 Carbon Sh
 Dolprim		 Ss

**OTHER SYMBOLS**

OTHER SYMBOLS

INTERVALS

- Core
- DST

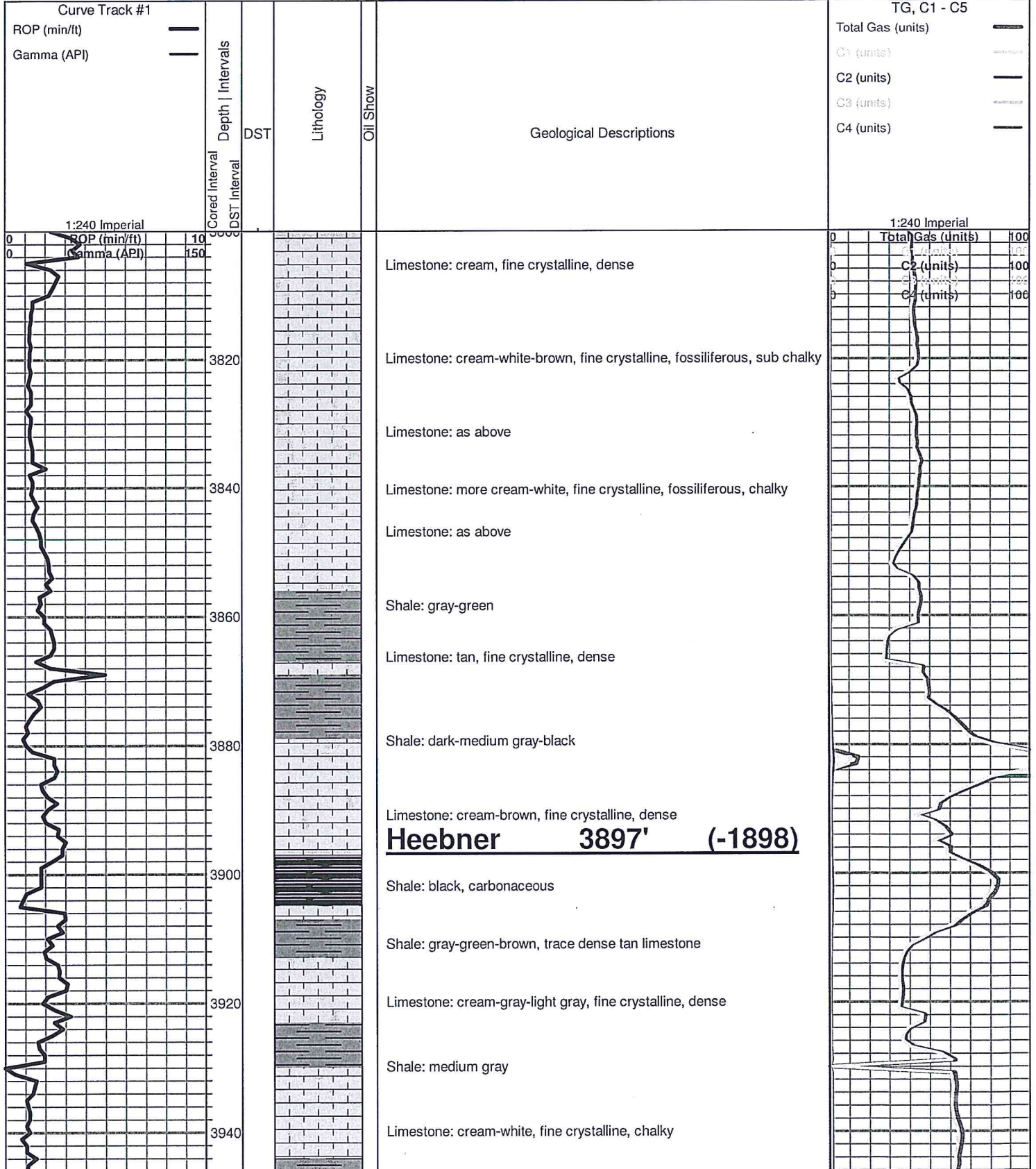
Oil Show

- Good Show
- Fair Show
- Poor Show
- Spotted or Trace
- Questionable Str
- D Dead Oil Str
- Fluorescence
- \* Gas

DST

- DST Int
- DST alt
- Core
- || tail pipe

Printed by GEOstrip VC Striplog version 4.0.7.0 (www.grsi.ca)



OTHER SYMBOLS

INTERVALS

- Core
- DST

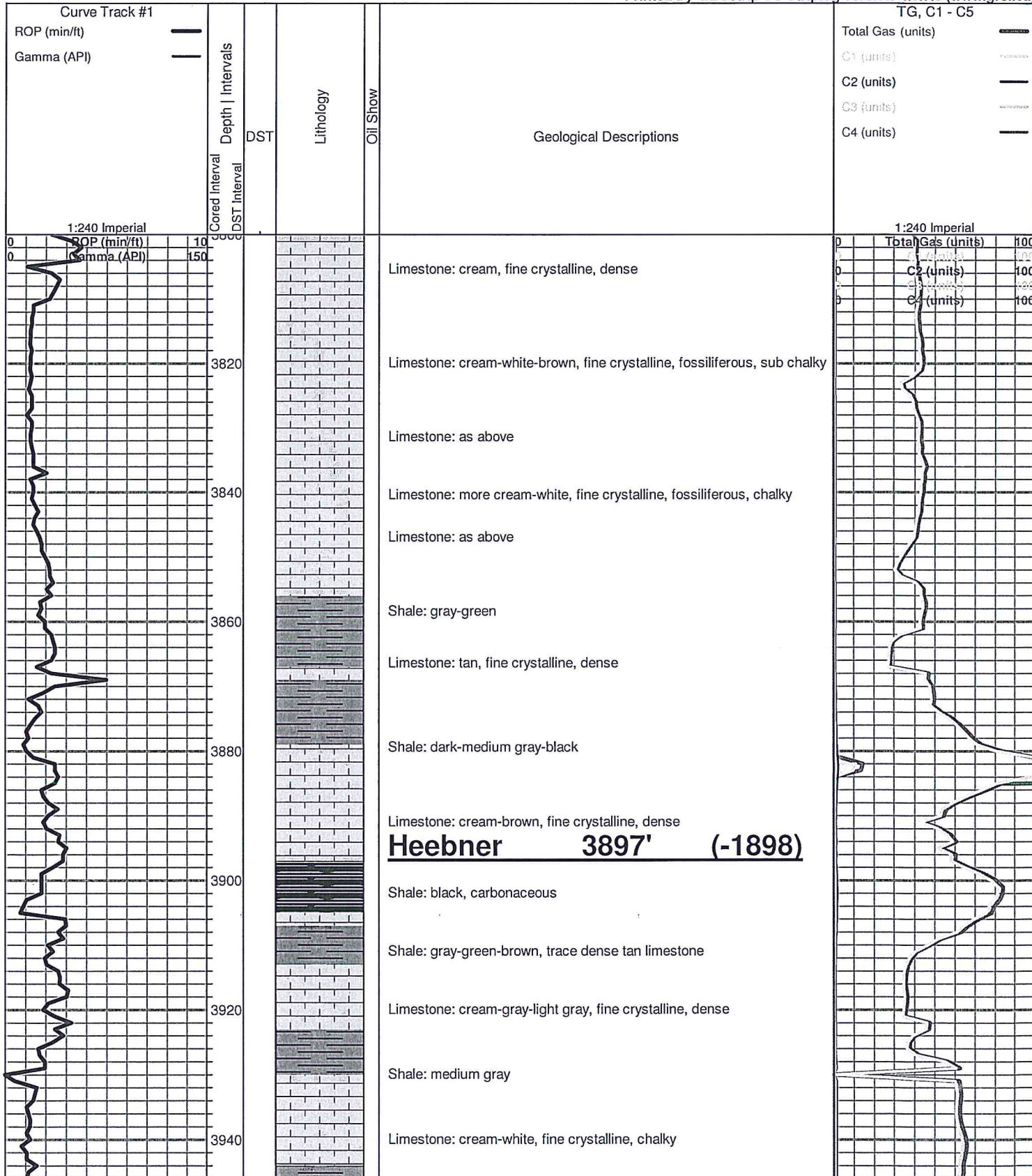
Oil Show

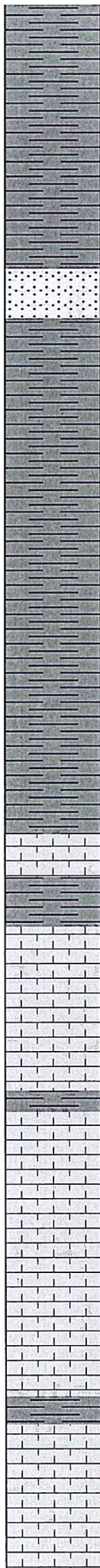
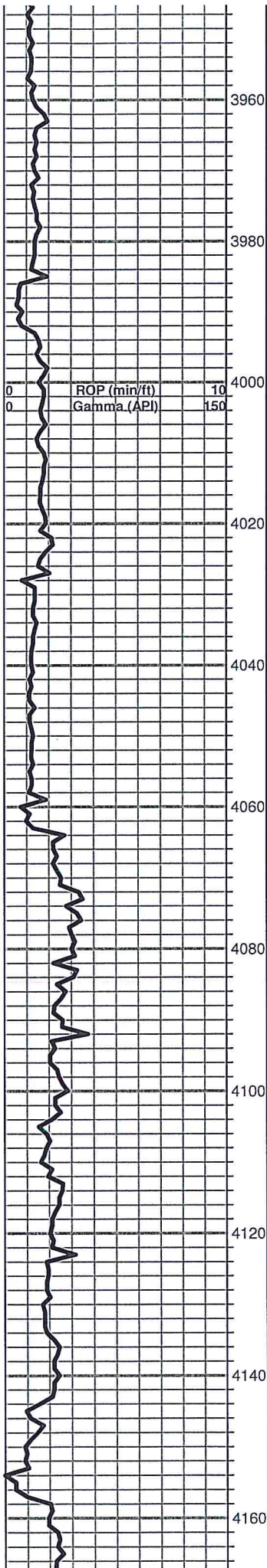
- Good Show
- Fair Show
- Poor Show
- Spotted or Trace
- Questionable Stn
- D Dead Oil Stn
- Fluorescence
- \* Gas

DST

- DST Int
- DST alt
- Core
- || tail pipe

Printed by GEOstrip VC Striplog version 4.0.7.0 (www.grsi.ca)





Shale: gray

Shale: gray-medium gray, pyritic

Shale: as above

Shale: as above

Sandstone: cream, fine grained

Shale: gray

Shale: gray

Shale: gray, silty to sandy

Shale: as above

Shale: gray-medium gray, silty to slightly sandy

Shale: as above

**Brown Lime 4063' (-2064)**  
Limestone: tan-brown, fine crystalline, no visible porosity, dense

**Lansing 4077' (-2078)**  
Limestone: cream-brown-gray, fine crystalline to fossiliferous, sub chalky

Limestone: as above, trace pin point porosity

Limestone: gray with shales

Limestone: cream-gray, fine crystalline to fossiliferous, poor visible porosity, sub chalky, odor in fresh

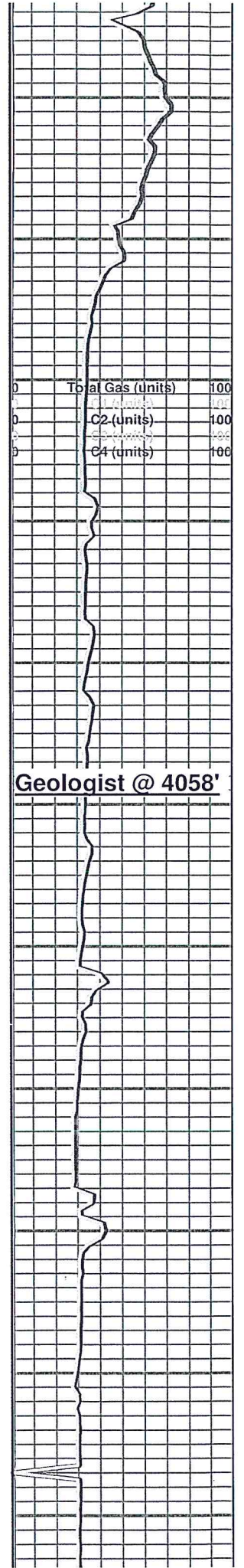
Limestone: as above, slight increase in odor, no show free oil

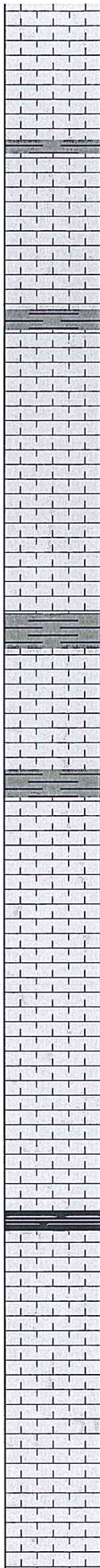
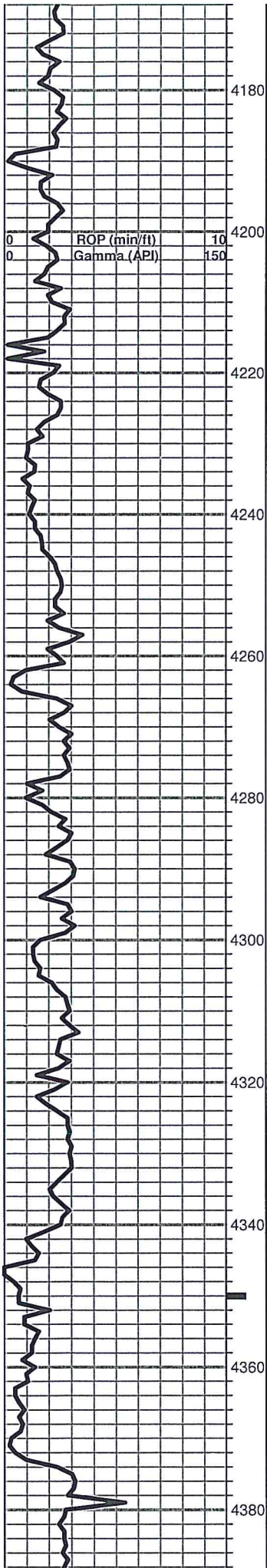
Limestone: cream-light tan-gray, fine crystalline to fossiliferous, poor visible porosity

Limestone: as above, sub chalky

Limestone: cream, fine crystalline, some visible porosity

Limestone: as above, sub chalky, no shows





Limestone: cream-gray, fine crystalline, poor visible porosity, dense

Limestone: as above

Shale: gray

Limestone: cream-white, fine crystalline, poor visible porosity, sub chalky

Shale: gray

Limestone: cream-brown, fine crystalline, dense

Limestone: as above

Limestone: cream-white-brown, fine crystalline, some visible porosity

Limestone: cream-white-brown, dense

Shale: gray

Limestone: cream, trace visible porosity, sub chalky

Shale: gray-green

Limestone: gray, fine crystalline, dense

Limestone: gray, as above

Limestone: cream-light brown, fossiliferous, dense

Limestone: cream-brown, fossiliferous, dense

Limestone: as above

**Stark 4338' (-2339)**

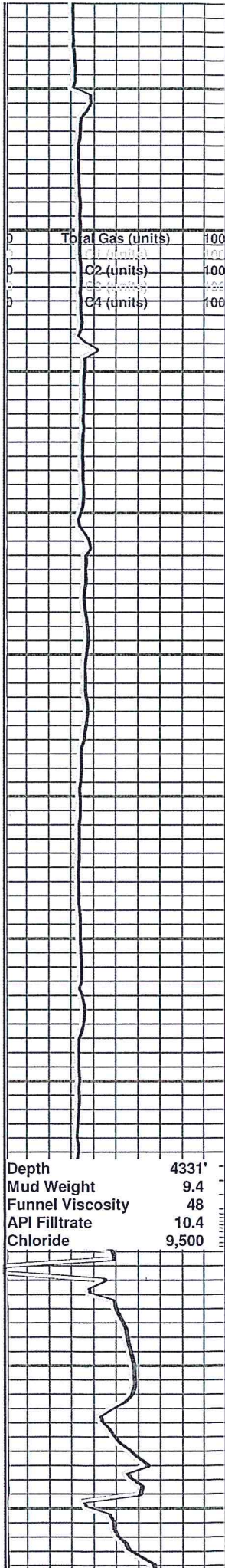
Shale: black

Circulated at 4350' Limestone: cream-tan-white, fine crystalline, rare visible porosity, chalky, slight odor, no show free oil

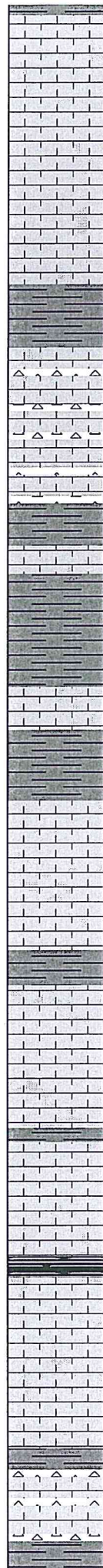
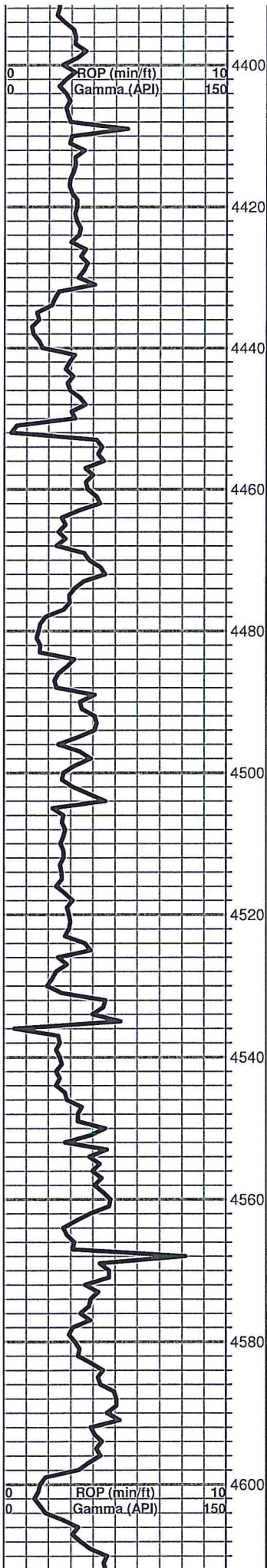
Limestone: as above, slight odor in fresh

Limestone: cream-white, fine crystalline, chalky, no shows

Limestone: more tan, fine crystalline, no visible porosity, dense



Depth	4331'
Mud Weight	9.4
Funnel Viscosity	48
API Filtrate	10.4
Chloride	9,500



Limestone: cream-gray-light tan, fine crystalline, slightly fossiliferous, dense

Limestone: more cream-light tan, fine to micro-crystalline, dense

Limestone: as above, sub chalky

Shale: gray-green

Limestone: tan-brown, fine crystalline, very dense, cherty

**Bit Trip @ 4251'**

Trip cavings

Shale: dark-medium gray-green

**B/KC 4472' (-2473)**

Shale: gray-green-red

Limestone: tan, dense

Shale: gray-green-red

Limestone: cream-gray, very slightly fossiliferous, poor to no visible porosity, sub shaley

Limestone: gray, dense

Shale: dark gray

**Pawnee 4530' (-2531)**

Limestone: light gray, dense

Limestone: as above, dirty

Limestone: gray-cream, micro-crystalline, no visible porosity, dense

**Cherokee 4568' (-2569)**

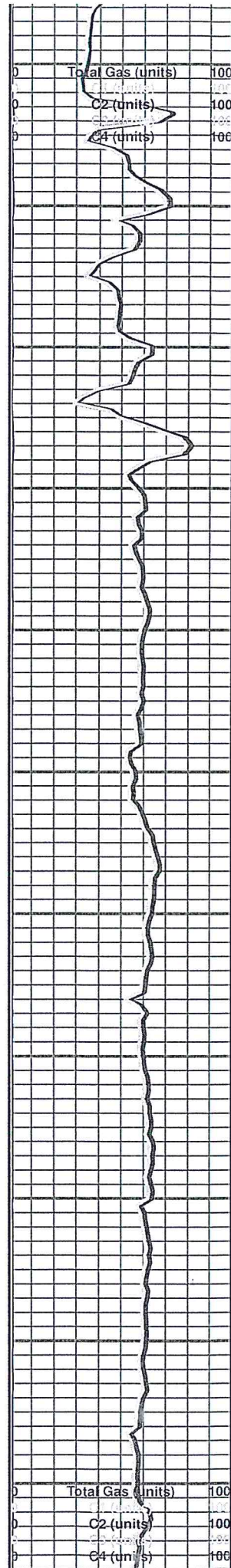
Shale: black

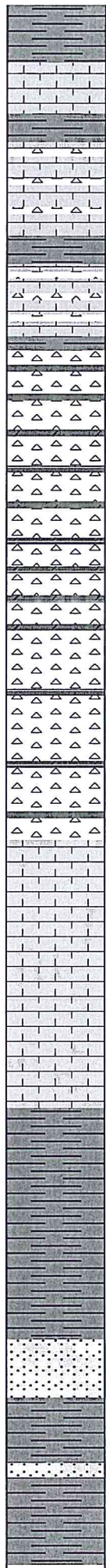
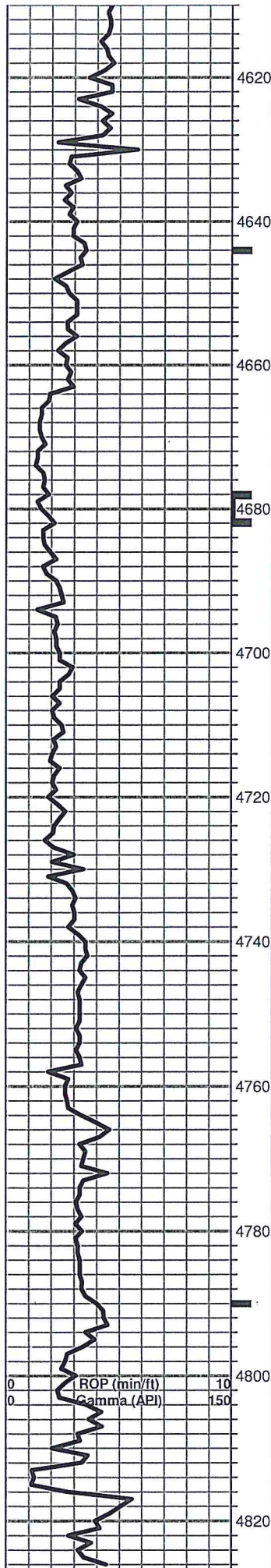
Limestone: cream-light tan, fine to micro-crystalline, dense

Sample: as above

Shale: gray-green-rust, few pieces cream, dense limestone, very cherty

Shale: gray-green-rust





Shale: gray-green-rust

Shaley limestone: samples very dirty

**Mississippian 4629' (-2630)**

Circulated at 4644' Chert: 70/30 vitreous/weathered, tan-cream-white, opaque to semi-translucent, very sharp and blocky, some stain in weathered pieces, trace sandy limestone, no odor or shows

**Viola 4658' (-2659)**

Chert: mostly vitreous, shaley, 5% very fine grained sandstone/dolomite, friable, faint odor, few pieces slight show free oil when broken

Circulated at 4680' Chert: white, vitreous, opaque, fine to medium crystalline, dolomite, soft, some light tan pieces when crushed, show gas bubble and pinhead droplets free oil, fluorescence

Cherty dolomite: cream-light tan, fine crystalline, poor visible inter-crystalline porosity, fair fluorescence, no odor, very slight show free oil

Cherty dolomite: cream-light tan, fine crystalline, looks tite, some fair fluorescence, some chalky material, very rare show

Cherty dolomite: as above, increase in chalky material

Cherty dolomite: mostly white, vitreous chert, decrease in dolomite material, tite

Limestone: cream-light tan, fine crystalline, dense

Limestone: as above

Limestone: as above

**Simpson 4763' (-2764)**

Predominantly shales: gray-green

Shale: as above

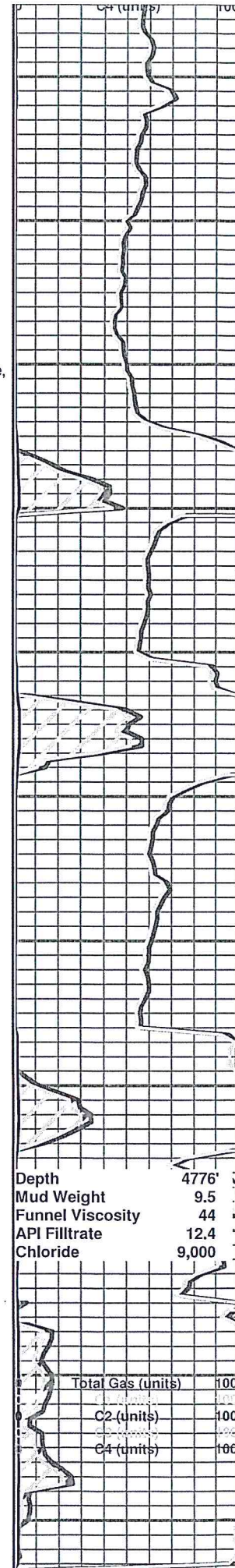
Sample: as above

Circulated at 4790' Shales: Simpson type

Shale: Simpson type with few gray, sandstone clusters, no shows

Shale

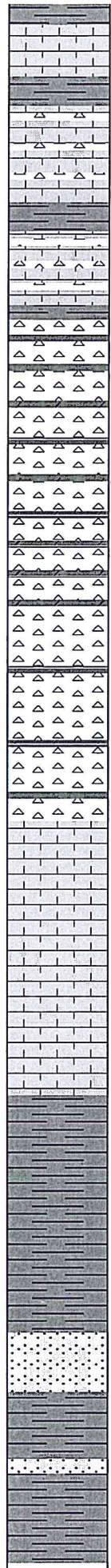
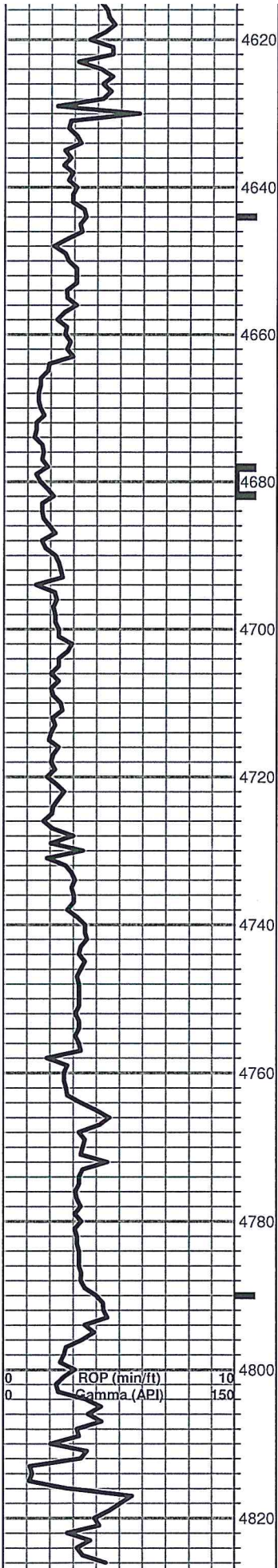
Shale: very rare sandstone clusters, no shows



Depth	4776'
Mud Weight	9.5
Funnel Viscosity	44
API Filtrate	12.4
Chloride	9,000

Total Gas (units)	100
C2 (units)	100
C4 (units)	100





Shaley limestone: samples very dirty

**Mississippian 4629' (-2630)**

Circulated at 4644' Chert: 70/30 vitreous/weathered, tan-cream-white, opaque to semi-translucent, very sharp and blocky, some stain in weathered pieces, trace sandy limestone, no odor or shows

**Viola 4658' (-2659)**

Chert: mostly vitreous, shaley, 5% very fine grained sandstone/dolomite, friable, faint odor, few pieces slight show free oil when broken

Circulated at 4680' Chert: white, vitreous, opaque, fine to medium crystalline, dolomite, soft, some light tan pieces when crushed, show gas bubble and pinhead droplets free oil, fluorescence

Cherty dolomite: cream-light tan, fine crystalline, poor visible inter-crystalline porosity, fair fluorescence, no odor, very slight show free oil

Cherty dolomite: cream-light tan, fine crystalline, looks tite, some fair fluorescence, some chalky material, very rare show

Cherty dolomite: as above, increase in chalky material

Cherty dolomite: mostly white, vitreous chert, decrease in dolomite material, tite

Limestone: cream-light tan, fine crystalline, dense

Limestone: as above

Limestone: as above

**Simpson 4763' (-2764)**

Predominantly shales: gray-green

Shale: as above

Sample: as above

Circulated at 4790' Shales: Simpson type

Shale: Simpson type with few gray, sandstone clusters, no shows

Shale

Shale: very rare sandstone clusters, no shows

