

**GEOLOGIC PROGNOSIS**

**Well: SCHOFFNER SWD NO. 12-1**

**API:**

Date/time printed: 7/18/2019 10:03

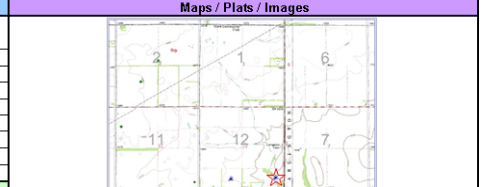


**WELL SYNOPSIS**  
 Initial plan is to drill 5' into the top of the MSSP, stop to retrieve coring tool and core approximately 30'. Following the core, the wellbore will be drilled to its final depth in the Arbuckle. A Drill Stem Test will be performed over the cored MSSP interval to determine the zone's depletion, if any. Upon successful DST results showing sufficient bottom hole pressure we will continue operations with a wireline logging run to capture the MSSP reservoir. The information provided by these tests will dictate the drilling of an extended horizontal well (Kelly 12-1-1H) and this well will serve as the disposal well for the water.

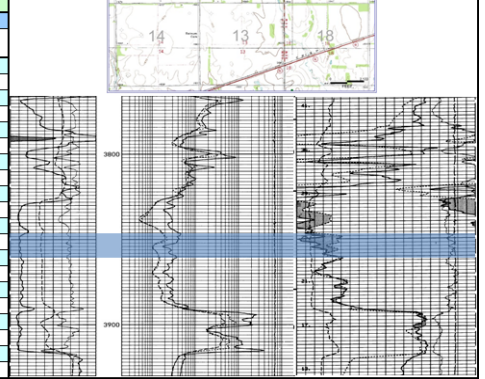
CONTACT INFORMATION				
Position	Name	Office #	Mobile #	E-Mail
Primary Geologist	JOE PODBECHAN	(918) 582-4284	(918) 261-7744	jpodpechan@orcaoperating.com
1st Alt. Geologist	JASON ANDREWS	(918) 582-4284	(918) 605-0114	jandrews@orcaoperating.com
2nd Alt. Geologist	BRAD NICHOLS	(918) 582-4284	(918) 704-7311	bnichols@orcaoperating.com
Drilling Supervisor:				
Drig. Engineer	WAYNE TAYLOR	(918) 582-4284	(918) 728-1801	waynetaylor@exactengineering.com
Alt. Drig. Engineer				
Rig Supervisor				
Alt. Rig Supervisor				
Drilling Contractor				
Mud Logging				
LWD				
Wireline				

WELL DATA		LOCATION DATA	
State :	Kansas	SHL	
County :	Reno	S-T-R :	12-25S-9W
Prospect :	Pleasant Valley	Lat :	37.88510182
Well Type :	SWD	Long :	-98.25344272
GL :	1644	X :	2071256
KB :	1656	Y :	443738.17
TD (MD) :	4,700	Sec Calls:	380' FEL
TD (TVD) :	4,700		775' FSL
<b>Target Formation</b>			
<b>ARBUCKLE</b>			
Surf csg	800 TVD	S-T-R :	12-25S-9W
Int csg	TVD	Lat :	
KOP	TVD	Long :	
TARGET	TVD	X :	
TD	MD	Y :	
Est BHT	deg F	Sec Calls:	380' FEL
Est BHP	0 psi		775' FSL

RIG & DRILLING DATA		SERVICES		CONTROL WELLS	
Rig :		Wireline		Name :	BAINUM BROOKS-JOHNSON
Rig KB (ft) :	12 verify	From :	MIN REGD. To : TD	Operator :	RAMA GRIGGS
Pad :		Run 1 :	TRIPLE-COMBO	S-T-R :	12-25S-9W 13-25S-9W
VS (ft) :	BHL-SHL	Core		Lat :	37.8848114 37.8811549
Lateral (ft) :	BHL-POP	From :	3815 To : 3845	Long :	-98.263442 -98.258584
Inclination :	degrees	DST		County :	RENO
Azimuth :	degrees	From :	3815 To : 3845	KB :	1666 1652
Tolerances :	Vertical	Mudlogger		N/S Foot. :	4620 FSL
	Horizontal	From :	3000 To : TD	EW Foot. :	2310 FEL



Formation Top	TOPS			DRILLED TOPS		LITHOLOGY	DRILLING HAZARDS	Expected Mudweight (PPG)	OFFSET WELL DATA		
	TVD	SSTVD	Vertical Section	TVD	SSTVD				TVD	SSTVD	MW
HEEBNER	3,111	-1,455		3094	-1438				3,121	-1,455	
DOUGLAS SHALE	3,140	-1,484		3160	-1504				3,150	-1,484	
LANSING	3,314	-1,658		3305	-1649				3,324	-1,658	
KANSAS CITY	3,681	-2,025		3682	-2026				3,691	-2,025	
CHEROKEE	3,784	-2,128		3693	-2037				3,794	-2,128	
MSSP LIME	3,817	-2,161		3837	-2181				3,827	-2,161	
MSSP BLUE	3,836	-2,180		3840	-2184				3,846	-2,180	
KINDERHOOK	3,905	-2,249		3912	-2256				3,915	-2,249	
VIOLA	4,120	-2,464		4085	-2429				4,130	-2,464	
ARBUCKLE	4,268	-2,612		4276	-2620				4,276	-2,612	



Prog Completed By : BRAD NICHOLS  
 Date : 11/26/2018  
 Edited by : BRAD NICHOLS  
 Date : 1/11/2019