

KEVIN L. KESSLER

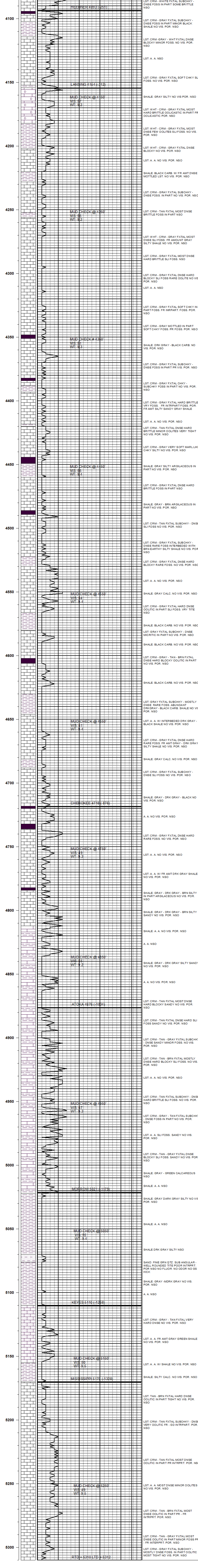
CONSULTING PETROLEUM GEOLOGIST

(316) 522-7338

OPERATOR : MULL DRILLING CO. INC.				ELEVATION	
LEASE : WHIRLWIND		WELL # : 1 - 21		KB: 3842'	
LOCATION : 1486' FNL & 1470' FWL				GL: 3834'	
SEC : 21	TWP : 17S	RGE : 42W		MEASUREMENTS FROM:	
COUNTY : GREELEY		STATE : KANSAS		KB	
CONTRACTOR: DUKE DRILLING RIG # 2				CASING RECORD:	
COMM: 04 - 03 - 2019		COMP: 04 - 10 - 2019		SURFACE:	
RTD: 5310'		LTD: 5312'		8 5/8" @ 427'	
GEOLOGICAL SUPERVISION FROM: 4000'				PRODUCTION:	
SAMPLES SAVED FROM: 4000'				NONE	

FORMATION:	TOP	LOG	DATUM	TOP	SAMPLE	DATUM	COMP.	ELECTRICAL SURVEYS:
HEEBNER	4093	-251		4093	-251		-24	
LANSING	4154	-312		4154	-312		-17	
CHEROKEE	4718	-876		4718	-876		-28	
ATOKA	4876	-1034		4876	-1034		-25	
MORROW	5021	-1179		5021	-1179		-28	
KEYES	5510	-1268		5510	-1268		-29	
MISSISSIPPI	5170	-1328		5170	-1328		-29	

REFERENCE WELL FOR STRUCTURAL COMPARISON:
MULL DRLG. #1-16 HAUGEN UNIT 16-17S-42W GREELEY CO. KS.



COMMENTS
DUE TO LACK OF SHOWS OF OIL THIS WELL WAS PLUGGED AND ABANDONED

KEVIN L. KESSLER