

KANSAS CORPORATION COMMISSION
OIL & GAS CONSERVATION DIVISION

TEMPORARY ABANDONMENT WELL APPLICATION

OPERATOR: License#
Name:
Address 1:
Address 2:
City: State: Zip:
Contact Person:
Phone:
Contact Person Email:
Field Contact Person:
Field Contact Person Phone:

API No. 15-
Spot Description:
Sec. Twp. S. R.
GPS Location: Lat: Long:
Datum: NAD27 NAD83 WGS84
County: Elevation:
Lease Name: Well #:
Well Type: Oil Gas OG WSW Other:
SWD Permit #: ENHR Permit #:
Gas Storage Permit #:
Spud Date: Date Shut-In:

Table with 7 columns: Conductor, Surface, Production, Intermediate, Liner, Tubing. Rows include Size, Setting Depth, Amount of Cement, Top of Cement, Bottom of Cement.

Casing Fluid Level from Surface: How Determined? Date:
Casing Squeeze(s): to w / sacks of cement, to w / sacks of cement. Date:
Do you have a valid Oil & Gas Lease? Yes No
Depth and Type: Junk in Hole at Tools in Hole at Casing Leaks: Yes No Depth of casing leak(s):
Type Completion: ALT. I ALT. II Depth of: DV Tool: w / sacks of cement Port Collar: w / sack of cement
Packer Type: Size: Inch Set at: Feet
Total Depth: Plug Back Depth: Plug Back Method:

Geological Data:

Table with 4 columns: Formation Name, Formation Top, Formation Base, Completion Information. Rows 1 and 2.

UNDER PENALTY OF PERJURY I HEREBY ATTEST THAT THE INFORMATION CONTAINED HEREIN IS TRUE AND CORRECT TO THE BEST OF MY KNOWLEDGE

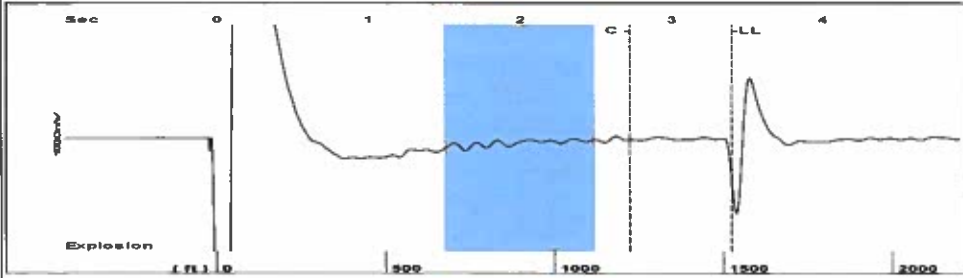
Submitted Electronically

Do NOT Write in This Space - KCC USE ONLY
Date Tested: Results: Date Plugged: Date Repaired: Date Put Back in Service:
Review Completed by: Comments:
TA Approved: Yes Denied Date:

Mail to the Appropriate KCC Conservation Office:

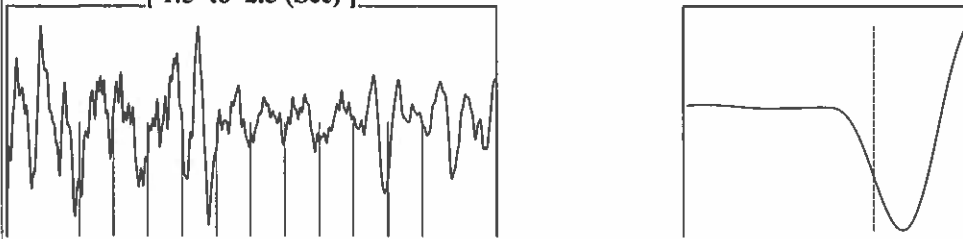
Table with 3 columns: District Office, Address, Phone. Rows for District Office #1, #2, #3, #4.

Group: TA'D WELLS Well: TURNER C-1 (acquired on: 06/29/21 10:32:01)



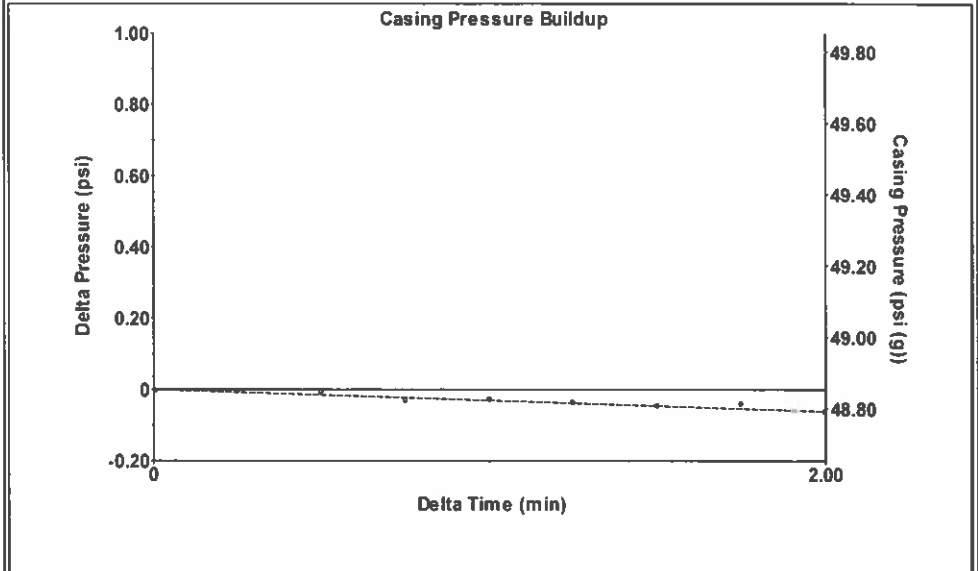
Filter Type High Pass Automatic Collar Count Yes Time 3.397 sec
 Manual Acoustic Velo 900.568 ft/s Manual JTS/sec 14.2045 Joints 48.0708 Jts
 Depth 1523.84 ft

[1.5 to 2.5 (Sec)]



Analysis Method: Automatic

Group: TA'D WELLS Well: TURNER C-1 (acquired on: 06/29/21 10:32:01)



Change in Pressure -0.06 psi PT9424
 Change in Time 2.00 min Range 0 - 2 psi

Group: TA'D WELLS Well: TURNER C-1 (acquired on: 06/29/21 10:32:01)

Production	Potential	Casing Pressure		Producing
Current		48.9 psi (g)		Annular Gas Flow
Oil -*- BBL/D		Casing Pressure Buildup		0 Mscf/D
Water -*- BBL/D		-0.061 psi		% Liquid
Gas -*- Mscf/D		2.00 min		100 %
IPR Method	Vogel	Gas/Liquid Interface Pressure		
PBHP/SBHP -*-		52.5 psi (g)		
Production Efficiency 0.0		Liquid Level Depth		
Oil 40 deg API		1523.84 ft		
Water 1.05 Sp.Gr.H2O		Pump Intake Depth		
Gas 1.06 Sp.Gr.AIR		2153.00 ft		
Acoustic Velocity	897.17 ft/s	Formation Depth		
		2250.00 ft		
Formation Submergence		Pump Intake		
Total Gaseous Liquid Column HT (TVD)	629 ft	266.9 psi (g)		
Equivalent Gas Free Liquid HT (TVD)	629 ft	Producing BHP		
		311.0 psi (g)		
Acoustic Test		Static BHP		
		-*- psi (g)		

Group: TA'D WELLS Well: TURNER C-1 (acquired on: 06/29/21 10:32:01)

Acoustic Velocity	897.17 ft/s	Joints counted	30
Joints Per Second	14.1509 jts/sec	Joints to liquid level	48.0708
Depth to liquid level	1523.84 ft	Filter Width	12.2045
Automatic Collar Count	Yes	Time to 1st Collar	0.604
			16.2045
			2.724

July 08, 2021

Katherine McClurkan
Merit Energy Company, LLC
13727 Noel Road, Suite 1200
Dallas, TX 75240

Re: Temporary Abandonment
API 15-129-21209-00-00
Turner C 1
SW/4 Sec.09-34S-41W
Morton County, Kansas

Dear Katherine McClurkan:

"Your temporary abandonment (TA) application for the well listed above has been approved. In accordance with K.A.R. 82-3-111 the TA status of this well will expire 07/08/2022.

- * If you return this well to service or plug it, please notify the District Office.
- * If you sell this well you are required to file a Transfer of Operator form, T-1.
- * If the well will remain temporarily abandoned, you must submit a new TA application, CP-111, before 07/08/2022.

You may contact me at the number above if you have questions.

Very truly yours,

Michael Maier"