

KANSAS CORPORATION COMMISSION
OIL & GAS CONSERVATION DIVISION

TEMPORARY ABANDONMENT WELL APPLICATION

OPERATOR: License#
Name:
Address 1:
Address 2:
City: State: Zip:
Contact Person:
Phone:
Contact Person Email:
Field Contact Person:
Field Contact Person Phone:

API No. 15-
Spot Description:
Sec. Twp. S. R.
GPS Location: Lat: Long:
Datum: NAD27 NAD83 WGS84
County: Elevation:
Lease Name: Well #:
Well Type: Oil Gas OG WSW Other:
SWD Permit #: ENHR Permit #:
Gas Storage Permit #:
Spud Date: Date Shut-In:

Table with 7 columns: Conductor, Surface, Production, Intermediate, Liner, Tubing. Rows include Size, Setting Depth, Amount of Cement, Top of Cement, Bottom of Cement.

Casing Fluid Level from Surface: How Determined? Date:
Casing Squeeze(s): to w / sacks of cement, to w / sacks of cement. Date:
Do you have a valid Oil & Gas Lease? Yes No
Depth and Type: Junk in Hole at Tools in Hole at Casing Leaks: Yes No Depth of casing leak(s):
Type Completion: ALT. I ALT. II Depth of: DV Tool: w / sacks of cement Port Collar: w / sack of cement
Packer Type: Size: Inch Set at: Feet
Total Depth: Plug Back Depth: Plug Back Method:

Geological Date:

Table with 4 columns: Formation Name, Formation Top, Formation Base, Completion Information. Rows 1 and 2.

UNDER PENALTY OF PERJURY I HEREBY ATTEST THAT THE INFORMATION CONTAINED HEREIN IS TRUE AND CORRECT TO THE BEST OF MY KNOWLEDGE

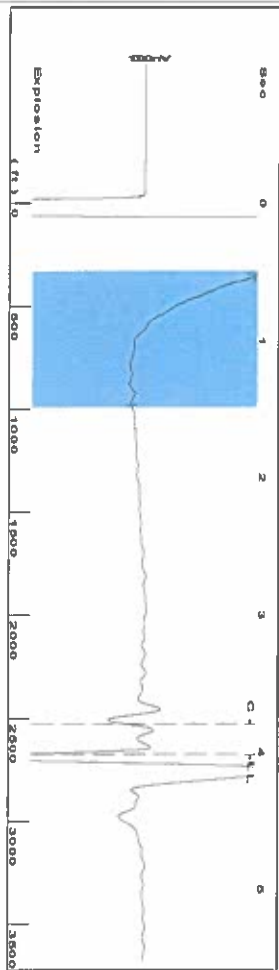
Submitted Electronically

Do NOT Write in This Space - KCC USE ONLY
Date Tested: Results: Date Plugged: Date Repaired: Date Put Back in Service:
Review Completed by: Comments:
TA Approved: Yes Denied Date:

Mail to the Appropriate KCC Conservation Office:

Table with 3 columns: District Office, Address, Phone. Rows for District Office #1, #2, #3, #4.

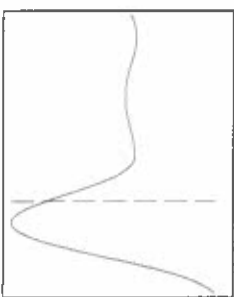
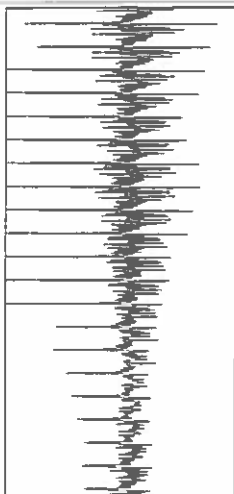
Group: SUBLETTE Well: Watson C-2 (acquired on: 06/09/21 13:13:10)



Filter Type High Pass Automatic Collar Count Yes  
 Manual Acoustic Velo 1320.83 Manual JTS/sec 20.8333

Time 4.02 sec  
 Joints 84.4154 Jts  
 Depth 2675.97 ft

0.5 to 1.5 (Sec)



Analysis Method: Automatic

Group: SUBLETTE Well: Watson C-2 (acquired on: 06/09/21 13:13:10)

Production	Potential	Casing Pressure	Producing
Current	BBL/D	124.5 psi (g)	Annular
Oil	BBL/D	Casing Pressure Buildup	Gas Flow
Water	BBL/D	-0.662 psi	% Liquid
Gas	Mscf/D	2.00 min	100 %
IPR Method	Vogel	Gas/Liquid Interface Pressure	
PBHP/SBHP		133.2 psi (g)	
Production Efficiency	0.0	Liquid Level Depth	
		2675.97 ft	
Oil	40 deg API	Pump Intake Depth	
Water	1.05 Sp.Gr.H2O	2761.00 ft	
Gas	0.67 Sp.Gr.AIR	Formation Depth	
		2640.00 ft	
Acoustic Velocity	1331.33 ft/s		

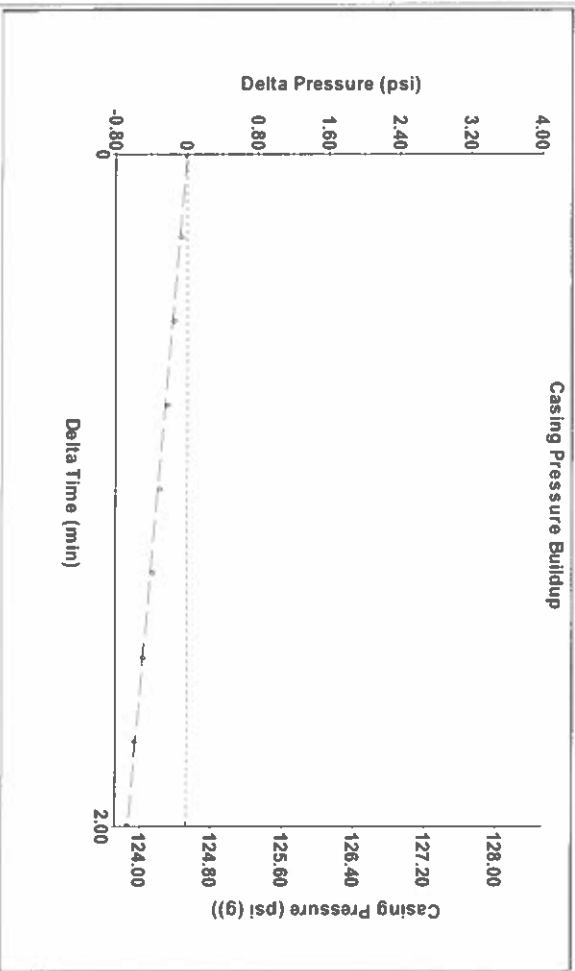


Formation Submergence  
 Total Gaseous Liquid Column HT (TVD)  
 Equivalent Gas Free Liquid HT (TVD)

85 ft  
 85 ft

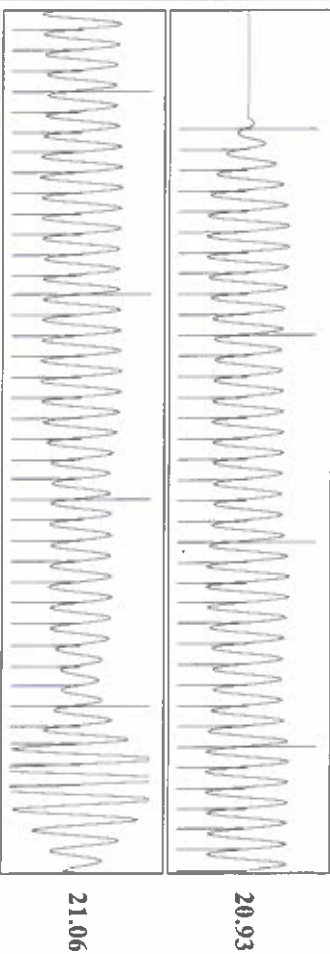
6/9/21

Group: SUBLETTE Well: Watson C-2 (acquired on: 06/09/21 13:13:10)



Change in Pressure -0.66 psi  
 Change in Time 2.00 min  
 PT14679  
 Range  
 0 - ? psi

Group: SUBLETTE Well: Watson C-2 (acquired on: 06/09/21 13:13:10)



Acoustic Velocity 1331.33 ft/s  
 Joints Per Second 20.9989 jts/sec  
 Depth to liquid level 2675.97 ft  
 Automatic Collar Count Yes  
 Joints counted 74  
 Joints to liquid level 84.4154  
 Filter Width 18.8333  
 Time to 1st Collar 0.276  
 22.8333  
 3.8

July 08, 2021

Katherine McClurkan  
Merit Energy Company, LLC  
13727 Noel Road, Suite 1200  
Dallas, TX 75240-7362

Re: Temporary Abandonment  
API 15-081-21698-00-01  
WATSON C 2  
NE/4 Sec.22-30S-32W  
Haskell County, Kansas

Dear Katherine McClurkan:

"Your temporary abandonment (TA) application for the well listed above has been approved. In accordance with K.A.R. 82-3-111 the TA status of this well will expire 07/08/2022.

- \* If you return this well to service or plug it, please notify the District Office.
- \* If you sell this well you are required to file a Transfer of Operator form, T-1.
- \* If the well will remain temporarily abandoned, you must submit a new TA application, CP-111, before 07/08/2022.

You may contact me at the number above if you have questions.

Very truly yours,

Michael Maier"