

KANSAS CORPORATION COMMISSION
OIL & GAS CONSERVATION DIVISION

TEMPORARY ABANDONMENT WELL APPLICATION

OPERATOR: License# _____
 Name: _____
 Address 1: _____
 Address 2: _____
 City: _____ State: _____ Zip: _____ + _____
 Contact Person: _____
 Phone: (_____) _____
 Contact Person Email: _____
 Field Contact Person: _____
 Field Contact Person Phone: (_____) _____

API No. 15- _____
 Spot Description: _____
 _____ - _____ - _____ - _____ Sec. _____ Twp. _____ S. R. _____ E W
 _____ feet from N / S Line of Section
 _____ feet from E / W Line of Section
 GPS Location: Lat: _____, Long: _____
(e.g. xx.xxxxx) (e.g. -xxx.xxxxx)
 Datum: NAD27 NAD83 WGS84
 County: _____ Elevation: _____ GL KB
 Lease Name: _____ Well #: _____
 Well Type: (check one) Oil Gas OG WSW Other: _____
 SWD Permit #: _____ ENHR Permit #: _____
 Gas Storage Permit #: _____
 Spud Date: _____ Date Shut-In: _____

	Conductor	Surface	Production	Intermediate	Liner	Tubing
Size						
Setting Depth						
Amount of Cement						
Top of Cement						
Bottom of Cement						

Casing Fluid Level from Surface: _____ How Determined? _____ Date: _____
 Casing Squeeze(s): _____ to _____ w / _____ sacks of cement, _____ to _____ w / _____ sacks of cement. Date: _____
(top) (bottom) (top) (bottom)
 Do you have a valid Oil & Gas Lease? Yes No
 Depth and Type: Junk in Hole at _____ Tools in Hole at _____ Casing Leaks: Yes No Depth of casing leak(s): _____
(depth) (depth)
 Type Completion: ALT. I ALT. II Depth of: DV Tool: _____ w / _____ sacks of cement Port Collar: _____ w / _____ sack of cement
(depth) (depth)
 Packer Type: _____ Size: _____ Inch Set at: _____ Feet
 Total Depth: _____ Plug Back Depth: _____ Plug Back Method: _____

Geological Data:

Formation Name	Formation Top	Formation Base	Completion Information
1. _____	At: _____	to _____ Feet	Perforation Interval _____ to _____ Feet or Open Hole Interval _____ to _____ Feet
2. _____	At: _____	to _____ Feet	Perforation Interval _____ to _____ Feet or Open Hole Interval _____ to _____ Feet

UNDER PENALTY OF PERJURY I HEREBY ATTEST THAT THE INFORMATION CONTAINED HEREIN IS TRUE AND CORRECT TO THE BEST OF MY KNOWLEDGE

Submitted Electronically

Do NOT Write in This Space - KCC USE ONLY	Date Tested: _____	Results: _____	Date Plugged: _____	Date Repaired: _____	Date Put Back in Service: _____
	Review Completed by: _____ Comments: _____				
TA Approved: <input type="checkbox"/> Yes <input type="checkbox"/> Denied Date: _____					

Mail to the Appropriate KCC Conservation Office:

	KCC District Office #1 - 210 E. Frontview, Suite A, Dodge City, KS 67801	Phone 620.682.7933
	KCC District Office #2 - 3450 N. Rock Road, Building 600, Suite 601, Wichita, KS 67226	Phone 316.337.7400
	KCC District Office #3 - 137 E. 21st St., Chanute, KS 66720	Phone 620.902.6450
	KCC District Office #4 - 2301 E. 13th Street, Hays, KS 67601-2651	Phone 785.261.6250

General

Well ID 125963
 Well Bill 1-4
 Company Sandridge
 Operator - * -
 Lease Name Bill 1-4
 Elevation 1281.00 ft
 Production Method Other
 Dataset Description

Comment

Surface Unit

Manufacturer - * -
 Unit Class Conventional
 Unit API Number - * -
 Measured Stroke Length - * - in
 Rotation CW
 Counter Balance Effect (Weights Level) - * - Klb
 Weight Of Counter Weights 2000 lb

Prime Mover

Motor Type Electric
 Rated HP - * - HP
 Run Time 24 hr/day
 MFG/Comment - * -

Electric Motor Parameters

Rated Full Load AMPS - * -
 Rated Full Load RPM - * -
 Synchronous RPM 1200
 Voltage - * -
 Hertz 60
 Phase 3
 Power Consumption 5
 Power Demand 8 \$/KW

Tubulars

Tubing OD 2.375 in
 Casing OD 4.500 in
 Average Joint Length 31.700 ft
 Anchor Depth - * - ft
 Kelly Bushing 8.00 ft

Pump

Plunger Diameter - * - in
 Pump Intake Depth - * - ft
 **Total Rod Length > Pump Depth

Polished Rod

Polished Rod Diameter - * - in

Rod String

	Top Taper	Taper 2	Taper 3	Taper 4	Taper 5	Taper 6
Rod Type	- * -	- * -	- * -	- * -	- * -	- * -
Rod Length	- * -	- * -	- * -	- * -	- * -	- * - ft
Rod Diameter	- * -	- * -	- * -	- * -	- * -	- * - in
Rod Weight	0.0	0.0	0.0	0.0	0.0	0.0 lb

Total Rod Length 0
 Total Rod Weight 0.00

Damp Up 0.05
 Damp Down 0.05

Conditions

Pressure

Static BHP 2084.1 psi (g)
 Static BHP Method Acoustic
 Static BHP Date 03/29/2016
 Producing BHP 2087.7 psi (g)
 Producing BHP Method Acoustic
 Producing BHP Date 06/17/2021
 Formation Depth 8606.00 ft

Surface Producing Pressures

Tubing Pressure - * - psi (g)
 Casing Pressure 199.2 psi (g)

Casing Pressure Buildup

Change in Pressure -0.504 psi
 Over Change in Time 1.00 min

Production

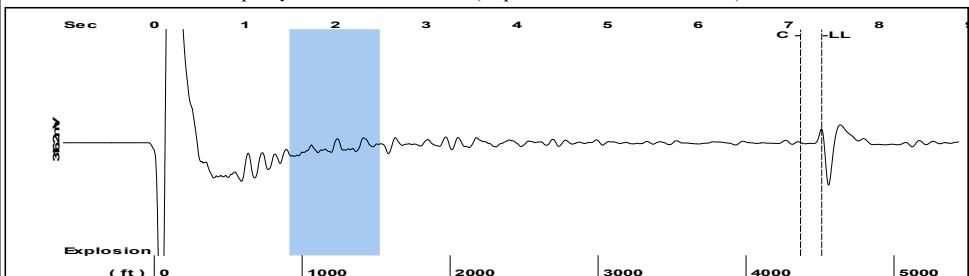
Oil Production 0 BBL/D
 Water Production 1 BBL/D
 Gas Production - * - Mscf/D
 Production Date 06/28/2021

Temperatures

Surface Temperature 70 deg F
 Bottomhole Temperature 150 deg F

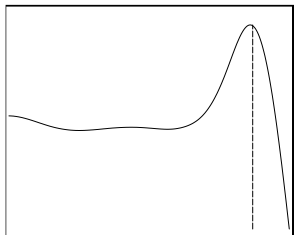
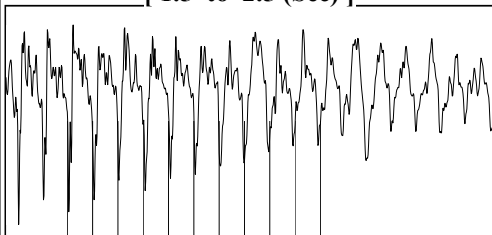
Fluid Properties

Oil API 40 deg.API
 Water Specific Gravity 1.05 Sp.Gr.H2O

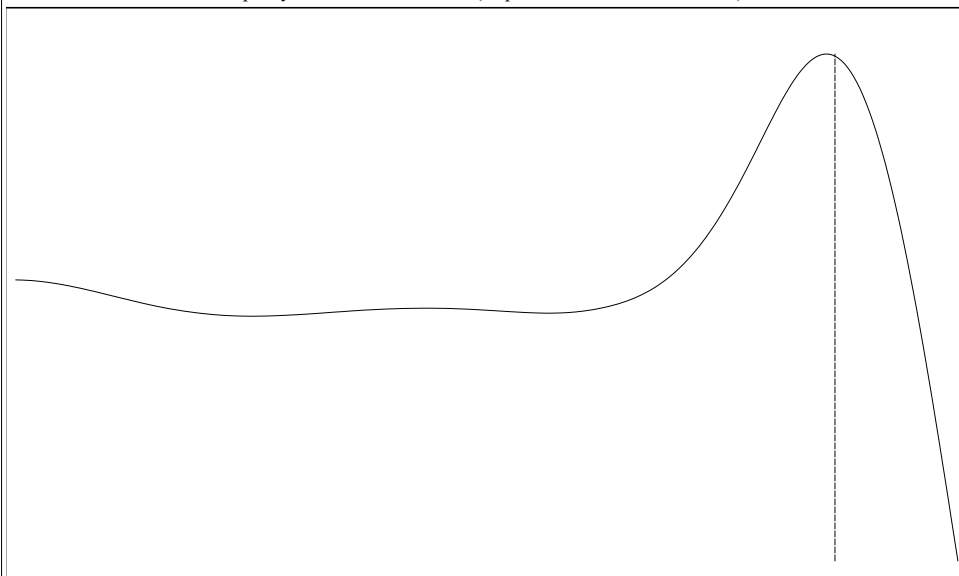


Filter Type High Pass Automatic Collar Count Yes Time 7.366 sec
 Manual Acoustic Veloc 1219.23 ft/s Manual JTS/sec 19.2308 Joints 142.312 Jts
 Depth 4511.30 ft

[1.5 to 2.5 (Sec)]

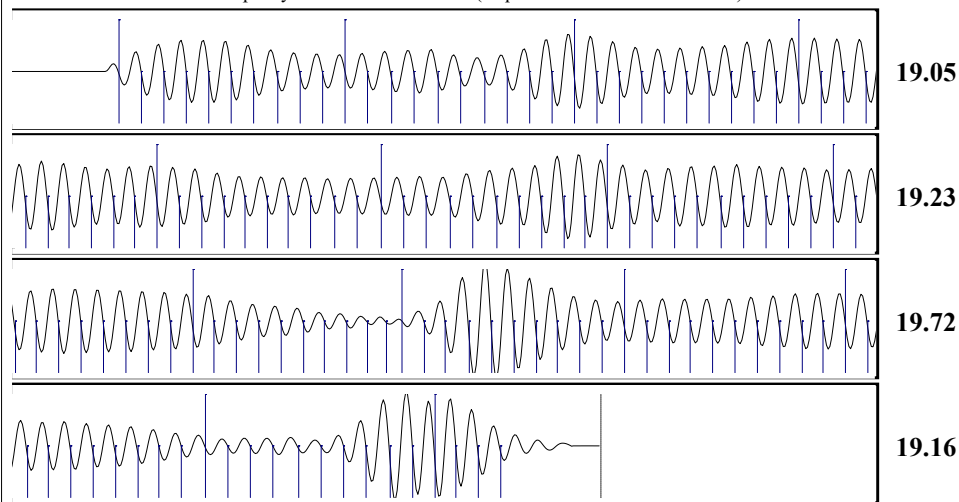


Analysis Method: Automatic



Change in Pressure -0.50 psi PT16722
 Change in Time 1.00 min Range 0 - ? psi

Production Current		Potential	Casing Pressure	Static
Oil	0	- * - BBL/D	199.2 psi (g)	Oil Column Height MD 0 ft
Water	1	- * - BBL/D	Casing Pressure Buildup 1.00 min	Water Column Height MD 4087 ft
Gas	- * -	- * - Mscf/D	Gas/Liquid Interface Pressure 226.1 psi (g)	Liquid Level Depth 4511.30 ft
IPR Method		Vogel		Tubing Intake Depth - * - ft
PBHP/SBHP		- * -		Formation Depth 8606.00 ft
Production Efficiency		0.0		Static BHP 2084.1 psi (g)
Oil	40 deg.API			
Water	1.05 Sp.Gr.H2O			
Gas	0.73 Sp.Gr.AIR			
Acoustic Velocity	1224.9 ft/s			



Acoustic Velocity 1224.9 ft/s Joints counted 133
 Joints Per Second 19.3202 jts/sec Joints to liquid level 142.312
 Depth to liquid level 4511.3 ft Filter Width 17.2308 21.2308
 Automatic Collar Count Yes Time to 1st Collar 0.248 7.132

Conservation Division
District Office No. 2
3450 N. Rock Road
Building 600, Suite 601
Wichita, KS 67226



Phone: 316-337-7400
Fax: 316-630-4005
<http://kcc.ks.gov/>

Andrew J. French, Chairperson
Dwight D. Keen, Commissioner
Susan K. Duffy, Commissioner

Laura Kelly, Governor

July 14, 2021

Collette Davis
SandRidge Exploration and Production LLC
1 E SHERIDAN AVE STE 500
OKLAHOMA CITY, OK 73104-2494

Re: Temporary Abandonment
API 15-077-21546-00-00
BILL 1-4
NW/4 Sec.04-34S-06W
Harper County, Kansas

Dear Collette Davis:

"Your temporary abandonment (TA) application for the well listed above has been approved. In accordance with K.A.R. 82-3-111 the TA status of this well will expire 07/14/2022.

- * If you return this well to service or plug it, please notify the District Office.
- * If you sell this well you are required to file a Transfer of Operator form, T-1.
- * If the well will remain temporarily abandoned, you must submit a new TA application, CP-111, before 07/14/2022.

You may contact me at the number above if you have questions.

Very truly yours,

Steve VanGieson"