

KANSAS CORPORATION COMMISSION
OIL & GAS CONSERVATION DIVISION

TEMPORARY ABANDONMENT WELL APPLICATION

OPERATOR: License#
Name:
Address 1:
Address 2:
City: State: Zip:
Contact Person:
Phone:
Contact Person Email:
Field Contact Person:
Field Contact Person Phone:

API No. 15-
Spot Description:
Sec. Twp. S. R.
feet from N / S Line of Section
feet from E / W Line of Section
GPS Location: Lat: , Long:
Datum: NAD27 NAD83 WGS84
County: Elevation: GL KB
Lease Name: Well #:
Well Type: (check one) Oil Gas OG WSW Other:
SWD Permit #: ENHR Permit #:
Gas Storage Permit #:
Spud Date: Date Shut-In:

Table with 7 columns: Conductor, Surface, Production, Intermediate, Liner, Tubing. Rows include Size, Setting Depth, Amount of Cement, Top of Cement, Bottom of Cement.

Casing Fluid Level from Surface: How Determined? Date:
Casing Squeeze(s): to w / sacks of cement, to w / sacks of cement. Date:
Do you have a valid Oil & Gas Lease? Yes No
Depth and Type: Junk in Hole at Tools in Hole at Casing Leaks: Yes No Depth of casing leak(s):
Type Completion: ALT. I ALT. II Depth of: DV Tool: w / sacks of cement Port Collar: w / sack of cement
Packer Type: Size: Inch Set at: Feet
Total Depth: Plug Back Depth: Plug Back Method:

Geological Data:

Table with 4 columns: Formation Name, Formation Top, Formation Base, Completion Information. Rows 1 and 2.

UNDER PENALTY OF PERJURY I HEREBY ATTEST THAT THE INFORMATION CONTAINED HEREIN IS TRUE AND CORRECT TO THE BEST OF MY KNOWLEDGE

Submitted Electronically

Do NOT Write in This Space - KCC USE ONLY
Date Tested: Results: Date Plugged: Date Repaired: Date Put Back in Service:
Review Completed by: Comments:
TA Approved: Yes Denied Date:

Mail to the Appropriate KCC Conservation Office:

Table with 3 columns: District Office, Address, Phone. Rows for District Office #1, #2, #3, #4.

Liquid Level

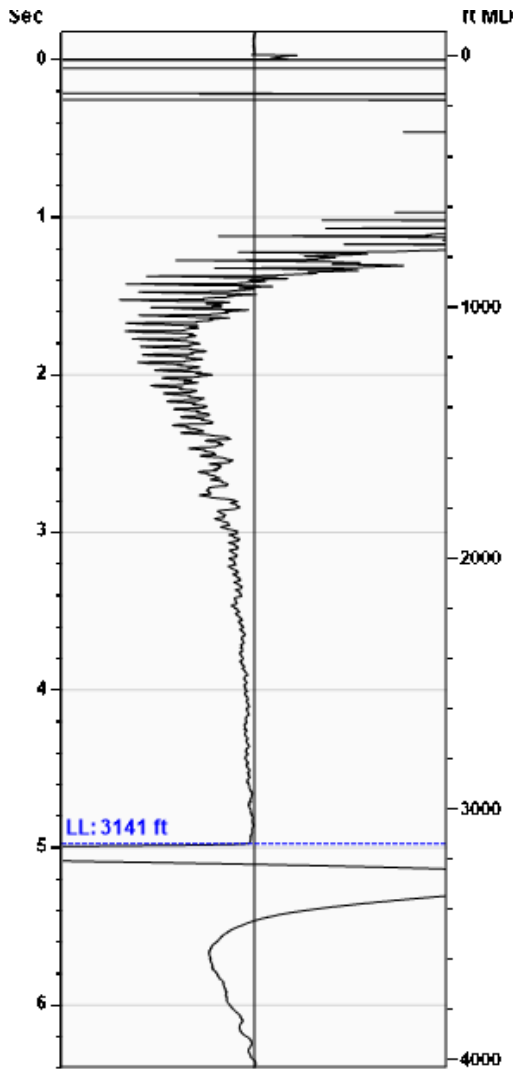
3141 ft MD

Fluid Above Pump

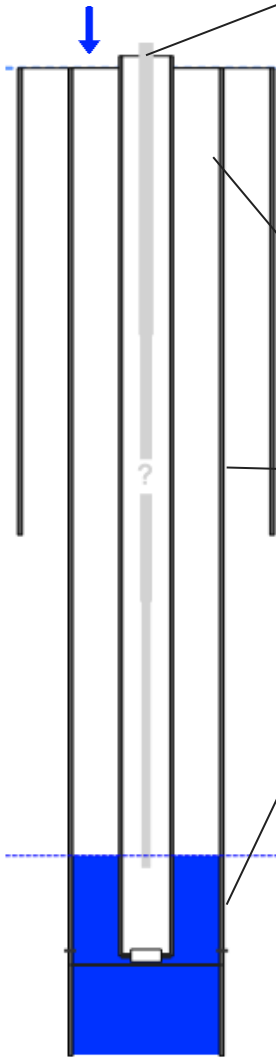
398 ft TVD

Equivalent Gas Free Above Pump

398 ft TVD



Gun - WG 1402



**Production**

Date Entered	02/01/21		
	Current	Potential	
Oil	0	**	BBL/D
Water	1	**	BBL/D
Gas	1.0	**	Mscf/D
IPR Method	Vogel		
PBHP/SBHP	-0.00		
Producing Efficiency	0.00%		

**Casing Pressure**

Pressure	0.0 psi (g)
----------	-------------

**Annular Gas Flow**

Gas Flow	0.0 Mscf/D
----------	------------

**Fluid Properties**

% Liquid Above Pump	100.00%
% Liquid Below Pump	**

**Depths**

Pump Intake Depth	3539 ft
Formation Depth	3528 ft

**Wellbore Pressures**

PIP	182.3 psi (g)
PBHP	177.3 psi (g)
SBHP	**
Gas/Liq Interface	1.2 psi (g)

**Acoustic Velocity**

Surface Temp	70 deg F	0.03% CO2
Bottomhole Temp	150 deg F	33.38% N2
Pressure	0.0 psi (g)	0.00% H2S
Gas Gravity	0.7544 Air = 1	
Acoustic Velocity	1257 ft/s	
Joints Per Sec.	19.95 Jts/sec	
Joints To Liquid	99.70 Jts	
Calculated From Known Gas Specific Gravity		

**Casing Pressure Buildup**

**No Pressure Acquired**

Casing Pressure	0.0 psi (g)
Buildup	0.0 psi (g)
Buildup Time	0 sec
Gas Gravity from Acoustic Velocity	0.7544 Air = 1

**Comments and Recommendations**

Acoustic Test

Petroleum Property Services  
125 N. Market, #1251  
Wichita, KS 67202

July 15, 2021

CYNDE WOLF  
Falcon Exploration, Inc.  
125 N MARKET STE 1252  
WICHITA, KS 67202-1719

Re: Temporary Abandonment  
API 15-069-20354-00-00  
CRUMP 1-14(NE)  
NE/4 Sec.14-28S-30W  
Gray County, Kansas

Dear CYNDE WOLF:

"Your temporary abandonment (TA) application for the well listed above has been approved. In accordance with K.A.R. 82-3-111 the TA status of this well will expire 07/15/2022.

- \* If you return this well to service or plug it, please notify the District Office.
- \* If you sell this well you are required to file a Transfer of Operator form, T-1.
- \* If the well will remain temporarily abandoned, you must submit a new TA application, CP-111, before 07/15/2022.

You may contact me at the number above if you have questions.

Very truly yours,

Michael Maier"