

KANSAS CORPORATION COMMISSION
OIL & GAS CONSERVATION DIVISION

TEMPORARY ABANDONMENT WELL APPLICATION

OPERATOR: License#
Name:
Address 1:
Address 2:
City: State: Zip:
Contact Person:
Phone:
Contact Person Email:
Field Contact Person:
Field Contact Person Phone:

API No. 15-
Spot Description:
Sec. Twp. S. R.
feet from N / S Line of Section
feet from E / W Line of Section
GPS Location: Lat: , Long:
Datum: NAD27 NAD83 WGS84
County: Elevation: GL KB
Lease Name: Well #:
Well Type: (check one) Oil Gas OG WSW Other:
SWD Permit #: ENHR Permit #:
Gas Storage Permit #:
Spud Date: Date Shut-In:

Table with 7 columns: Conductor, Surface, Production, Intermediate, Liner, Tubing. Rows include Size, Setting Depth, Amount of Cement, Top of Cement, Bottom of Cement.

Casing Fluid Level from Surface: How Determined? Date:
Casing Squeeze(s): to w / sacks of cement, to w / sacks of cement. Date:
Do you have a valid Oil & Gas Lease? Yes No
Depth and Type: Junk in Hole at Tools in Hole at Casing Leaks: Yes No Depth of casing leak(s):
Type Completion: ALT. I ALT. II Depth of: DV Tool: w / sacks of cement Port Collar: w / sack of cement
Packer Type: Size: Inch Set at: Feet
Total Depth: Plug Back Depth: Plug Back Method:

Geological Date:

Table with 4 columns: Formation Name, Formation Top, Formation Base, Completion Information. Rows 1 and 2.

UNDER PENALTY OF PERJURY I HEREBY ATTEST THAT THE INFORMATION CONTAINED HEREIN IS TRUE AND CORRECT TO THE BEST OF MY KNOWLEDGE

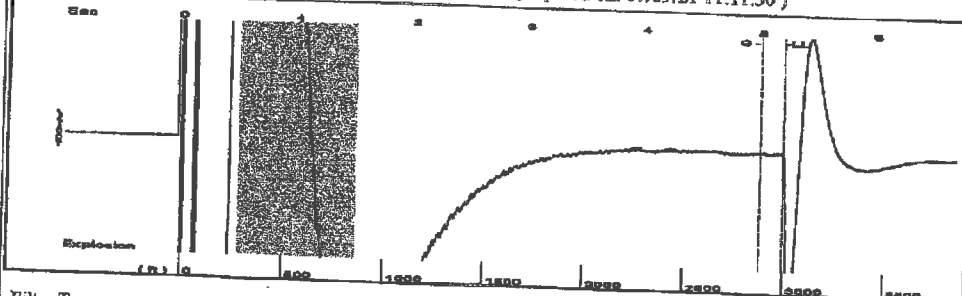
Submitted Electronically

Do NOT Write in This Space - KCC USE ONLY
Date Tested: Results: Date Plugged: Date Repaired: Date Put Back in Service:
Review Completed by: Comments:
TA Approved: Yes Denied Date:

Mail to the Appropriate KCC Conservation Office:

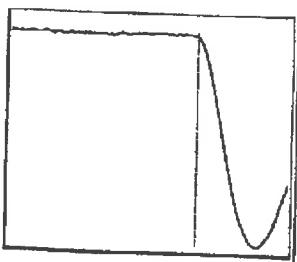
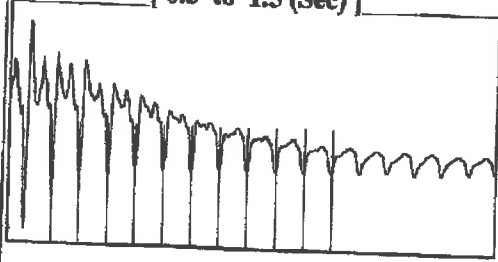
Table with 3 columns: District Office #, Address, Phone. Rows 1-4.

Group: Radium Well: Romine Trust 2-1 (acquired on: 07/09/21 11:11:30)



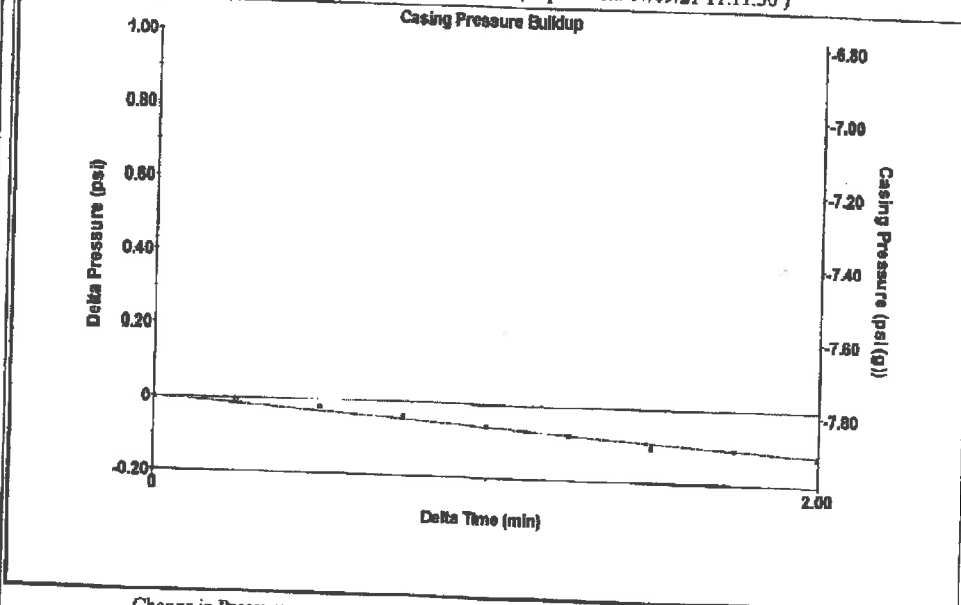
Filter Type High Pass Automatic Collar Count Yes
 Manual Acoustic Velo 126.04 ft/s Manual JTS/sec 17.3611
 Time 5.196 sec
 Joints 92.3929 Jts
 Depth 2996.30 ft

[0.5 to 1.5 (Sec)]



Analysis Method: Automatic

Group: Radium Well: Romine Trust 2-1 (acquired on: 07/09/21 11:11:30)



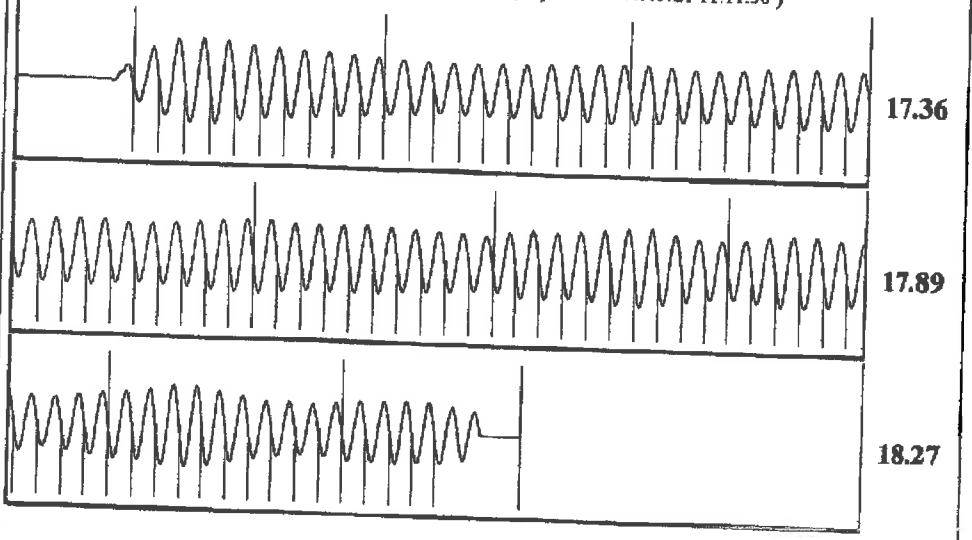
Change in Pressure -0.12 psi PT13440
 Change in Time 2.00 min Range 0 - ? psi

Group: Radium Well: Romine Trust 2-1 (acquired on: 07/09/21 11:11:30)

Production Current	Potential	Casing Pressure	Producing
Oil - * -	- * - BBL/D	-7.8 psi (g)	
Water - * -	- * - BBL/D	Casing Pressure Buildup	Annular Gas Flow
Gas - * -	- * - Msc/D	-0.124 psi	0 Msc/D
		2.00 min	% Liquid
IPR Method	Vogel	Gas/Liquid Interface Pressure	100 %
PBHP/SBHP	- * -	-7.2 psi (g)	
Production Efficiency	0.0		
Oil 40 deg.API		Liquid Level Depth	
Water 1.05 Sp.Gr.H2O		2996.30 ft	
Gas 0.84 Sp.Gr.AIR		Pump Intake Depth	
		3600.00 ft	
Acoustic Velocity	1153.31 ft/s	Formation Depth	
		3451.00 ft	
Formation Submergence			
Total Gaseous Liquid Column HT (TVD)	604 ft	Pump Intake	
Equivalent Gas Free Liquid HT (TVD)	604 ft	197.8 psi (g)	
Acoustic Test		Producing BHP	
		147.7 psi (g)	
		Static BHP	
		- * - psi (g)	



Group: Radium Well: Romine Trust 2-1 (acquired on: 07/09/21 11:11:30)



Acoustic Velocity 1153.31 ft/s Joints counted 84
 Joints Per Second 17.7815 jts/sec Joints to liquid level 92.3929
 Depth to liquid level 2996.3 ft Filter Width 15.3611 19.3611
 Automatic Collar Count Yes Time to 1st Collar 0.272 4.996

Conservation Division
District Office No. 4
2301 E. 13th Street
Hays, KS 67601-2651



Phone: 785-261-6250
Fax: 785-625-0564
<http://kcc.ks.gov/>

Andrew J. French, Chairperson
Dwight D. Keen, Commissioner
Susan K. Duffy, Commissioner

Laura Kelly, Governor

July 16, 2021

Loveness Mpanje
F. G. Holl Company L.L.C.
9431 E CENTRAL STE 100
WICHITA, KS 67206-2563

Re: Temporary Abandonment
API 15-009-25559-00-00
ROMINE TRUST 2-1
SE/4 Sec.01-20S-15W
Barton County, Kansas

Dear Loveness Mpanje:

"Your temporary abandonment (TA) application for the well listed above has been approved. In accordance with K.A.R. 82-3-111 the TA status of this well will expire 07/16/2022.

- * If you return this well to service or plug it, please notify the District Office.
- * If you sell this well you are required to file a Transfer of Operator form, T-1.
- * If the well will remain temporarily abandoned, you must submit a new TA application, CP-111, before 07/16/2022.

You may contact me at the number above if you have questions.

Very truly yours,

RICHARD WILLIAMS"