

KANSAS CORPORATION COMMISSION
OIL & GAS CONSERVATION DIVISION

Form must be Typed
Form must be signed

TEMPORARY ABANDONMENT WELL APPLICATION

All blanks must be complete

OPERATOR: License#
Name:
Address 1:
Address 2:
City: State: Zip:
Contact Person:
Phone:
Contact Person Email:
Field Contact Person:
Field Contact Person Phone:

API No. 15-
Spot Description:
Sec. Twp. S. R.
feet from N / S Line of Section
feet from E / W Line of Section
GPS Location: Lat: , Long:
Datum: NAD27 NAD83 WGS84
County: Elevation: GL KB
Lease Name: Well #:
Well Type: Oil Gas OG WSW Other:
SWD Permit #: ENHR Permit #:
Gas Storage Permit #:
Spud Date: Date Shut-In:

Table with 7 columns: Conductor, Surface, Production, Intermediate, Liner, Tubing. Rows include Size, Setting Depth, Amount of Cement, Top of Cement, Bottom of Cement.

Casing Fluid Level from Surface: How Determined? Date:
Casing Squeeze(s): to w / sacks of cement, to w / sacks of cement. Date:
Do you have a valid Oil & Gas Lease? Yes No
Depth and Type: Junk in Hole at Tools in Hole at Casing Leaks: Yes No Depth of casing leak(s):
Type Completion: ALT. I ALT. II Depth of: DV Tool: w / sacks of cement Port Collar: w / sack of cement
Packer Type: Size: Inch Set at: Feet
Total Depth: Plug Back Depth: Plug Back Method:

Geological Data:

Table with 4 columns: Formation Name, Formation Top, Formation Base, Completion Information. Rows 1 and 2.

UNDER PENALTY OF PERJURY I HEREBY ATTEST THAT THE INFORMATION CONTAINED HEREIN IS TRUE AND CORRECT TO THE BEST OF MY KNOWLEDGE

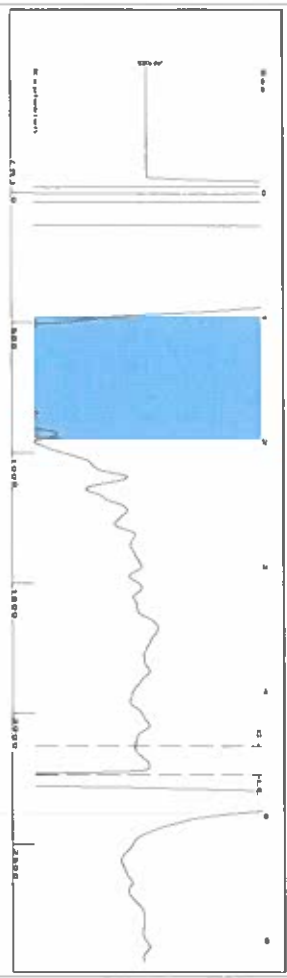
Submitted Electronically

Do NOT Write in This Space - KCC USE ONLY
Date Tested: Results: Date Plugged: Date Repaired: Date Put Back in Service:
Review Completed by: Comments:
TA Approved: Yes Denied Date:

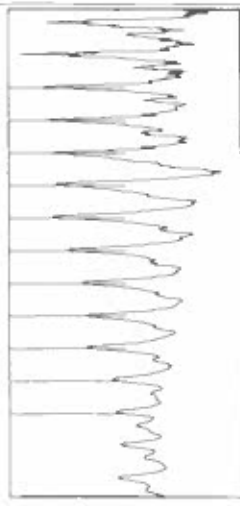
Mail to the Appropriate KCC Conservation Office:

Table with 3 columns: District Office #, Address, Phone. Rows 1-4.

Group: SUBLETTE Well: Hoffman 3 (acquired on: 07/20/21 12:00:55)



[ 1.0 to 2.0 (Sec) ]



Filter Type High Pass Automatic Collar Count Yes  
 Manual Acoustic Velocity 956 ft/s Manual JTS/sec 14.9234  
 Time 4.674 sec  
 Joints 70.5129 ft  
 Depth 2235.26 ft

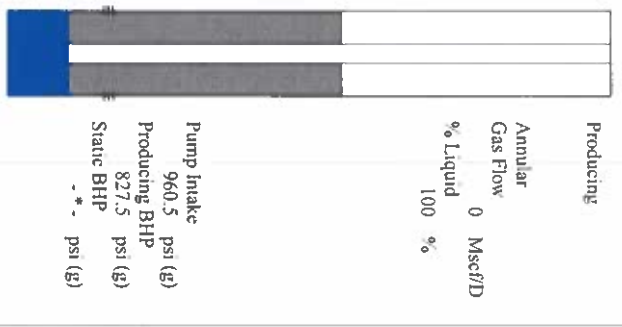
**Analysis Method: Automatic**

Group: SUBLETTE Well: Hoffman 3 (acquired on: 07/20/21 12:00:55)

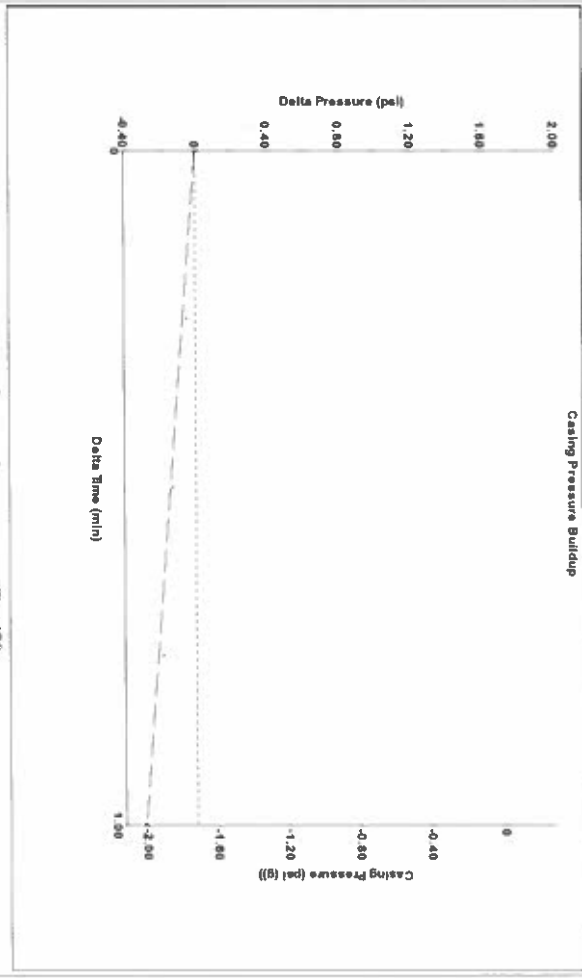
Production	Potential	Casing Pressure	Producing
Oil -*-	-*- BBL/D	-1.7 psi (g)	Annular
Water -*-	-*- BBL/D	-0.288 psi	Gas Flow
Gas -*-	-*- Mscf/D	1.00 min	% Liquid
IPR Method	Vogel	Gas/Liquid Interface Pressure	% Mscf/D
PBHP/SBHP	-*-	-0.7 psi (g)	
Production Efficiency	0.0		

Oil	deg/API	Liquid Level Depth
Water	105 Sp.Gr:H2O	2235.26 ft
Gas	1.01 Sp.Gr:AIR	Pump Intake Depth
		5174.00 ft
Acoustic Velocity	956.466 ft/s	Formation Depth
		4742.00 ft

Total Gaseous Liquid Column HT (TVD)	2939 ft
Equivalent Gas Free Liquid HT (TVD)	2939 ft

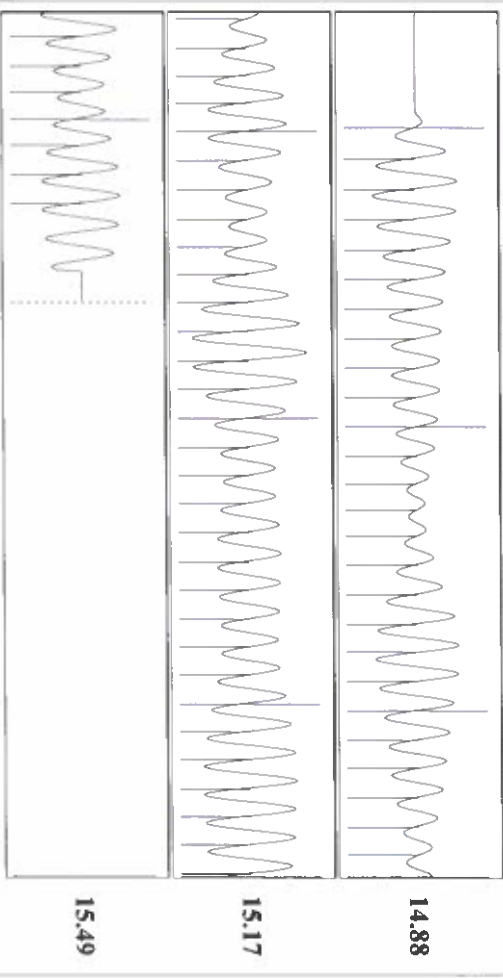


Group: SUBLETTE Well: Hoffman 3 (acquired on: 07/20/21 12:00:55)



Change in Pressure -0.29 psi PT14679  
 Change in Time 1.00 min Range 0 - 7 psi

Group: SUBLETTE Well: Hoffman 3 (acquired on: 07/20/21 12:00:55)



Acoustic Velocity 956.466 ft/s Joints counted 63  
 Joints Per Second 15.0862 ft/sec Joints to liquid level 70.5129  
 Depth to liquid level 2235.26 ft Filter Width 12.9254  
 Automatic Collar Count Yes Time to 1st Collar 0.268

Conservation Division  
District Office No. 1  
210 E. Frontview, Suite A  
Dodge City, KS 67801



Phone: 620-682-7933  
<http://kcc.ks.gov/>

Andrew J. French, Chairperson  
Dwight D. Keen, Commissioner  
Susan K. Duffy, Commissioner

Laura Kelly, Governor

July 22, 2021

Katherine McClurkan  
Merit Energy Company, LLC  
13727 Noel Road, Suite 1200  
Dallas, TX 75240-7362

Re: Temporary Abandonment  
API 15-081-21668-00-01  
Hoffman 3-O19-30-32  
SE/4 Sec.19-30S-32W  
Haskell County, Kansas

Dear Katherine McClurkan:

"Your temporary abandonment (TA) application for the well listed above has been approved. In accordance with K.A.R. 82-3-111 the TA status of this well will expire 07/22/2022.

- \* If you return this well to service or plug it, please notify the District Office.
- \* If you sell this well you are required to file a Transfer of Operator form, T-1.
- \* If the well will remain temporarily abandoned, you must submit a new TA application, CP-111, before 07/22/2022.

You may contact me at the number above if you have questions.

Very truly yours,

Michael Maier"